

CUSTOMER ORDER NO: -----

3 STAGE REDUCER

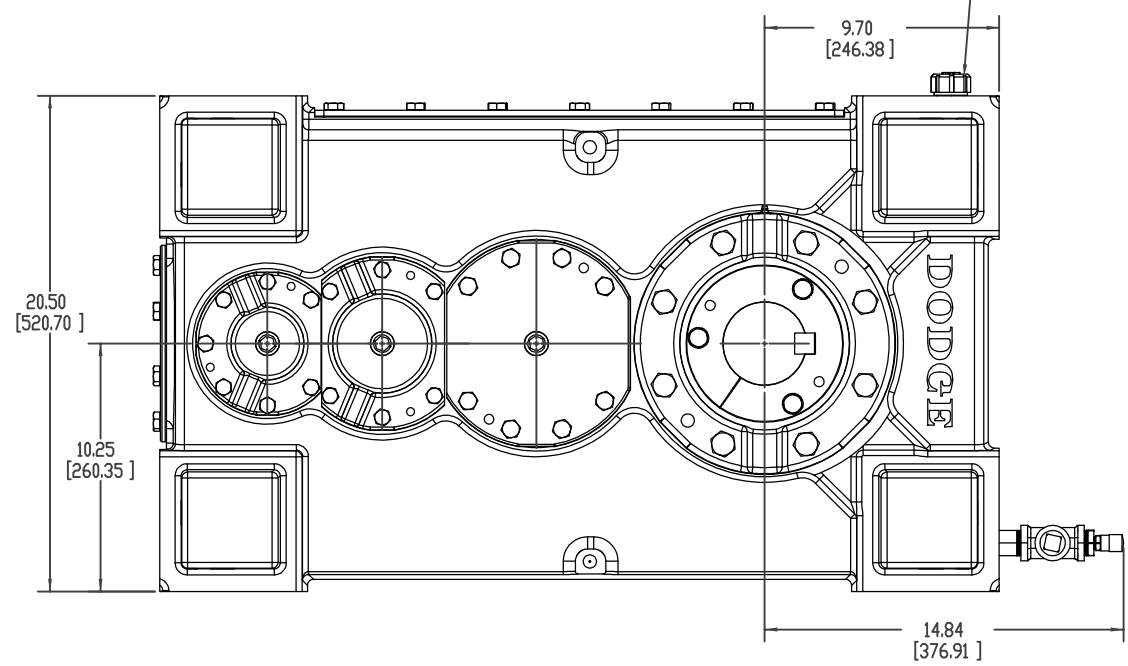
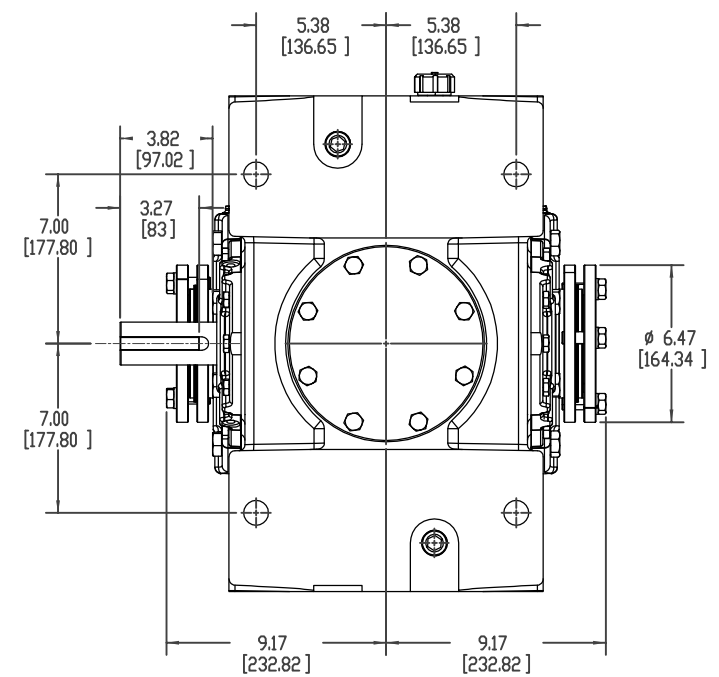
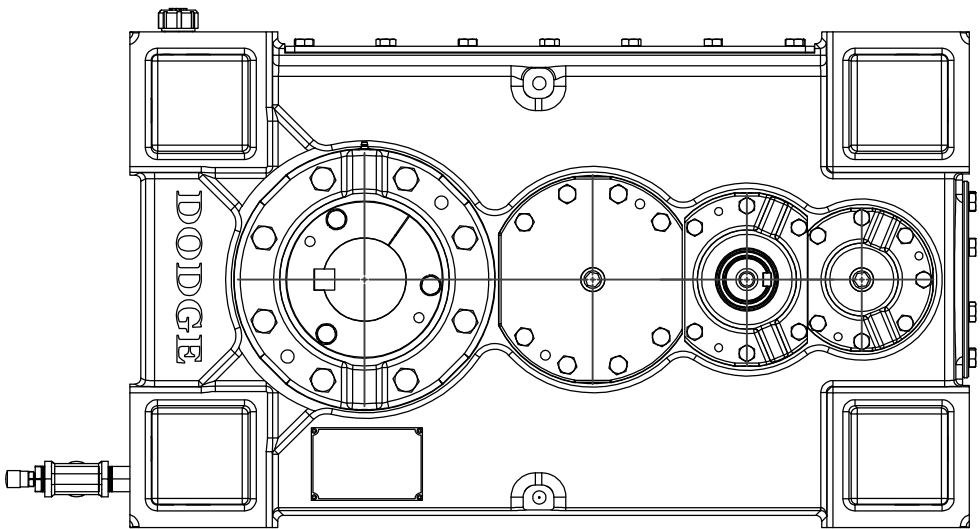
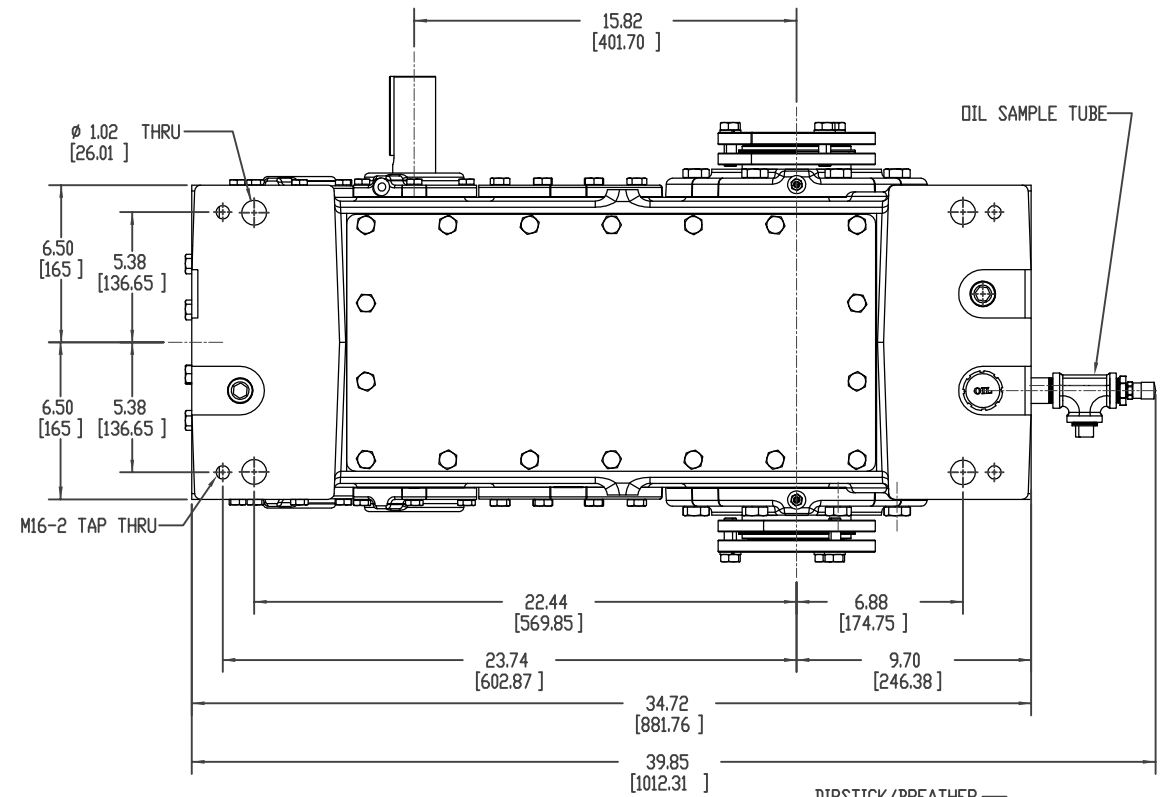
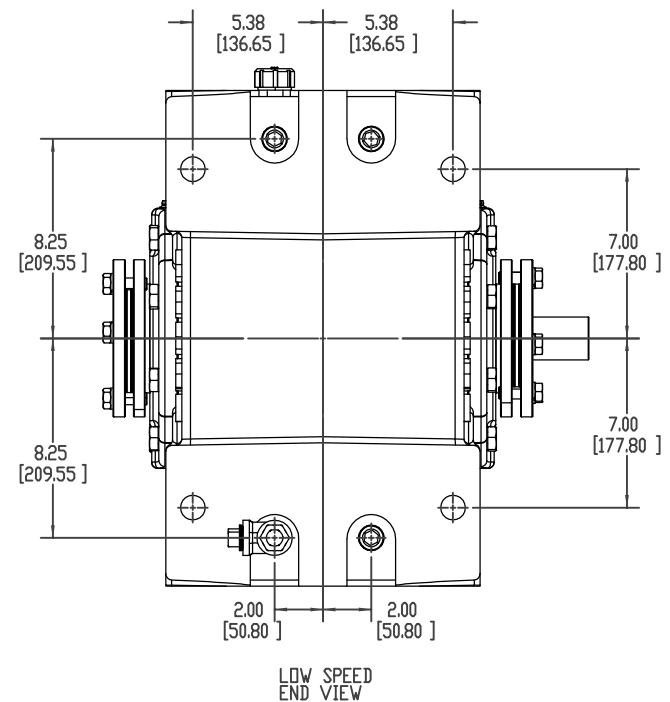
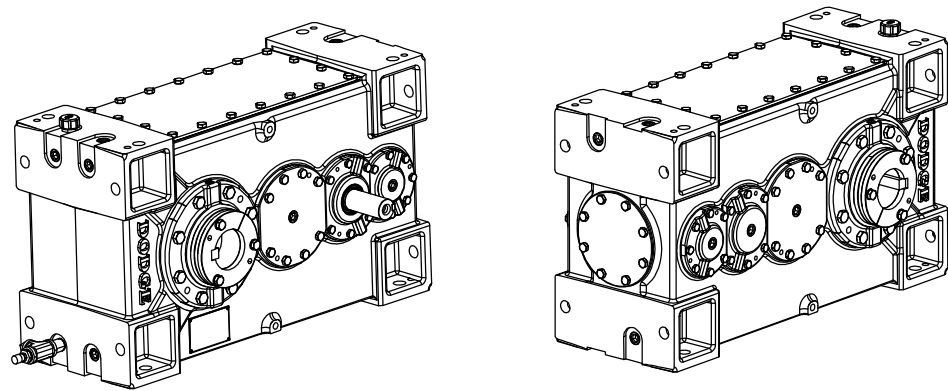
MODEL NUMBER: 150K

OVERALL RATIO: -----:1

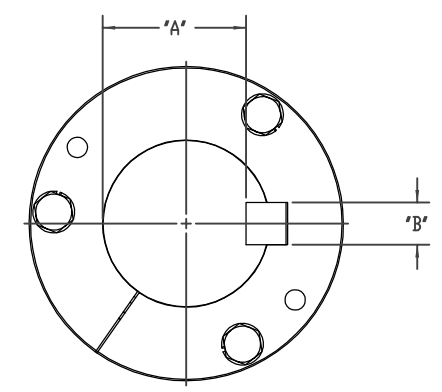
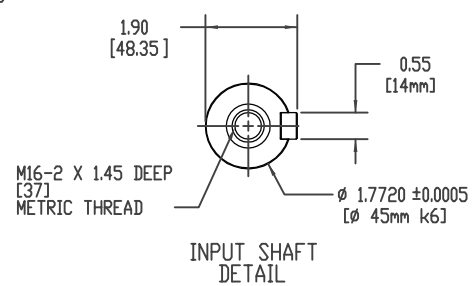
AGMA CLASS 1 RATING: ----- HP @ ----- RPM

SERVICE FACTOR: -----

1103 Lbs.



WEIGHT=1103 LBS



SEE PAGE #24 FOR OUTPUT HUB DETAIL

BORE DIA.	'A'	'B'
3-7/16"	2.943"	7/8"
3-3/16"	2.768"	3/4"
3"	2.577"	3/4"
2-15/16"	2.514"	3/4"
2-7/8"	2.45"	3/4"
2-11/16"	2.338"	5/8"
2-1/2"	2.148"	5/8"
2-7/16"	2.443"	5/8"
2-3/8"	2.021"	5/8"
2-1/4"	1.972"	1/2"
2-3/16"	1.909"	1/2"
90mm	81mm	25mm
85mm	76mm	22mm
80mm	71mm	22mm
75mm	67.5mm	20mm
70mm	62.5mm	20mm
65mm	58mm	20mm
60mm	53mm	18mm

BALDOR-DODGE-RELIANCE PROPRIETARY & CONFIDENTIAL- THIS DRAWING IS THE PROPERTY OF BALDOR-DODGE-RELIANCE AND/OR ITS SUBSIDIARIES AND IS NOT TO BE USED, DUPLICATED OR DISCLOSED WITHOUT THE EXPRESS WRITTEN PERMISSION OF THE COMPANY.

E.C.R. NO.	REV	REV DATE	BY	APP'D	REVISION DESCRIPTION

MATERIAL	DIMENSION TOLERANCE UNLESS OTHERWISE SPECIFIED	PRODUCT	DIST
	MACHINE TOL PER S022 FABRICATION TOL PER S356 CASTING TOL PER S249	MAGNAGEAR 100K	
CASTING OR FORGING NO.	BRK ALL SHRP CORNERS 0.005-0.015	PART	
		PARALLEL INPUT- HOLLOW OUTPUT DOUBLE REDUCTION ASSEMBLY	
TREATMENT	DRWN BY: BL DATE: 8/14/08	CHKD BY: CN DATE: 8/14/08	DATE: 8/14/08
		SCALE: 1-4	DRAWING NUMBER: 452240-HLW
		SHEET NUMBER: 2 OF 4	REV: -

BALDOR • DODGE