

CUSTOMER ORDER NO: -----

3 STAGE REDUCER

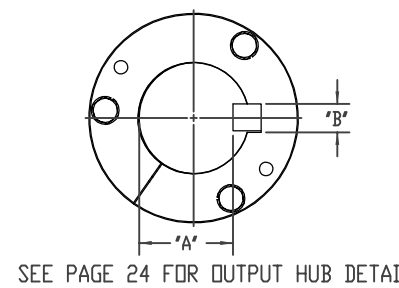
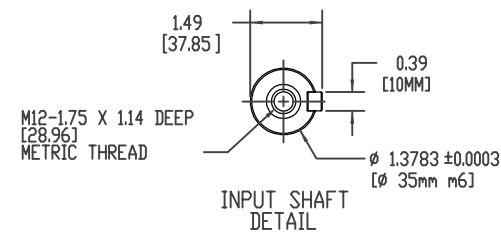
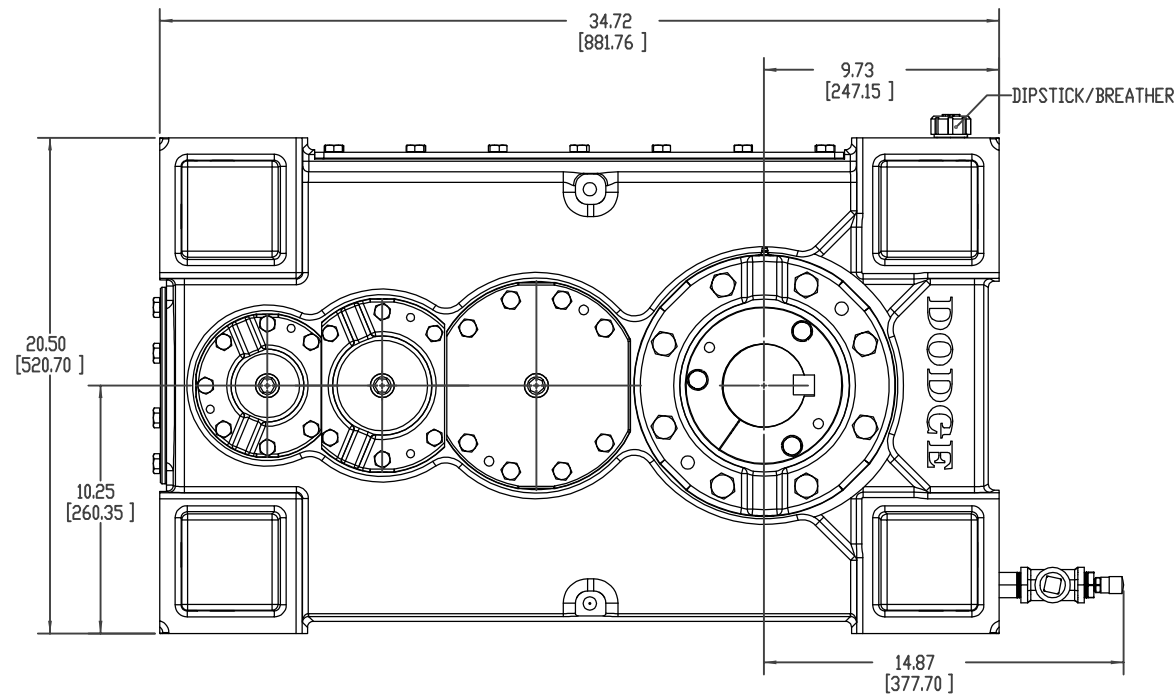
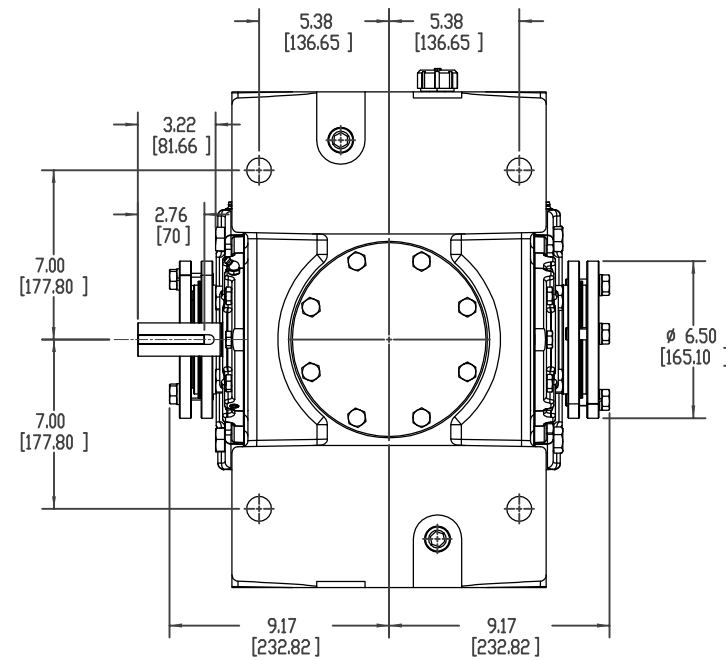
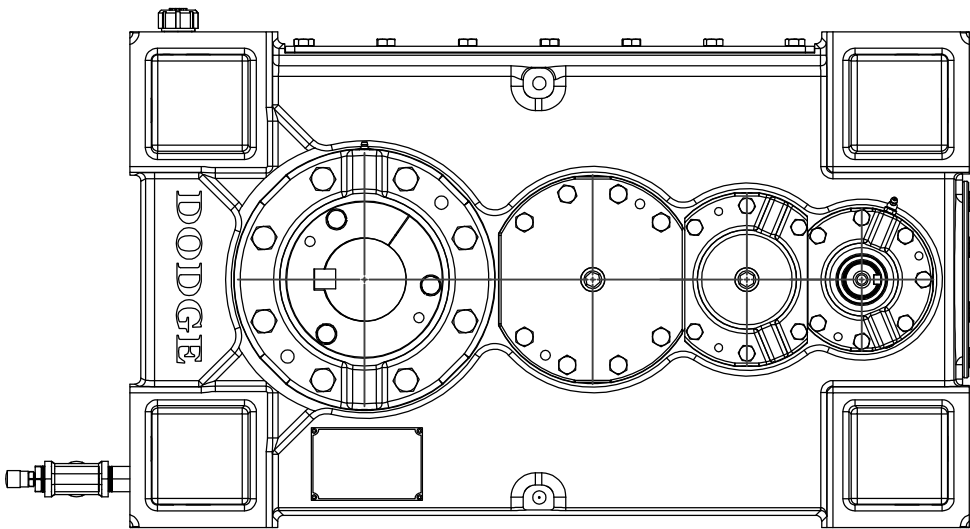
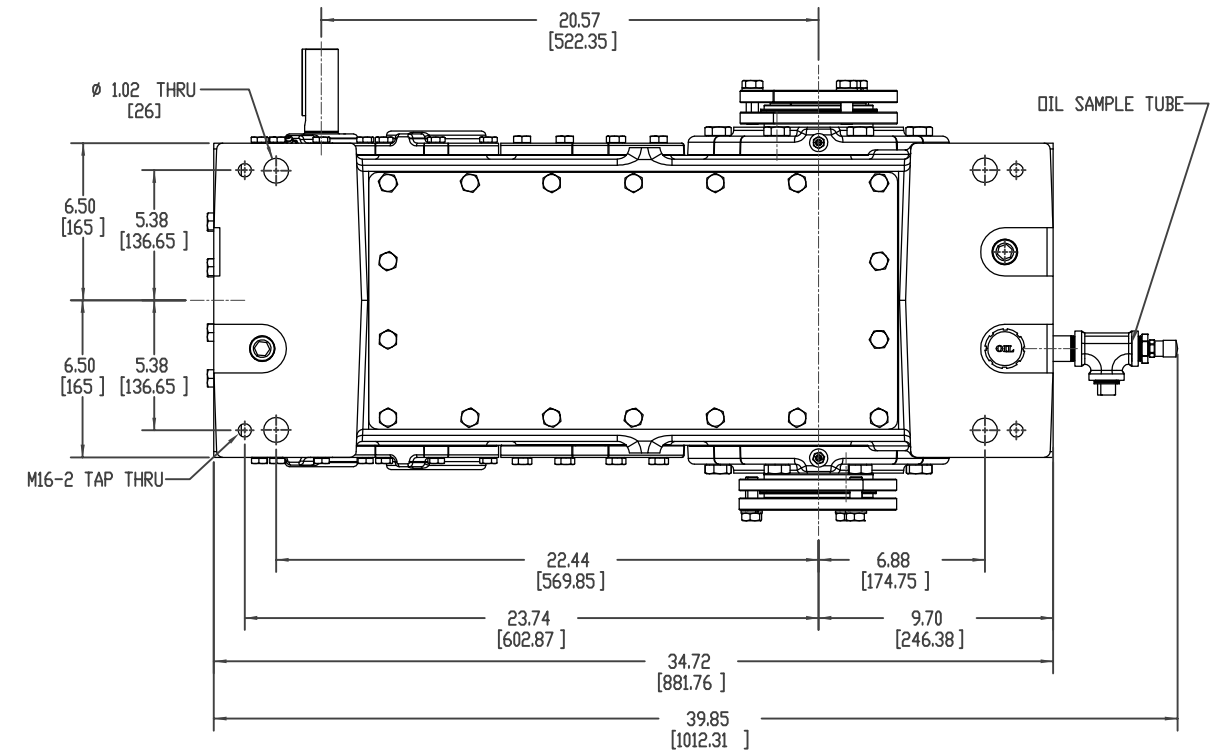
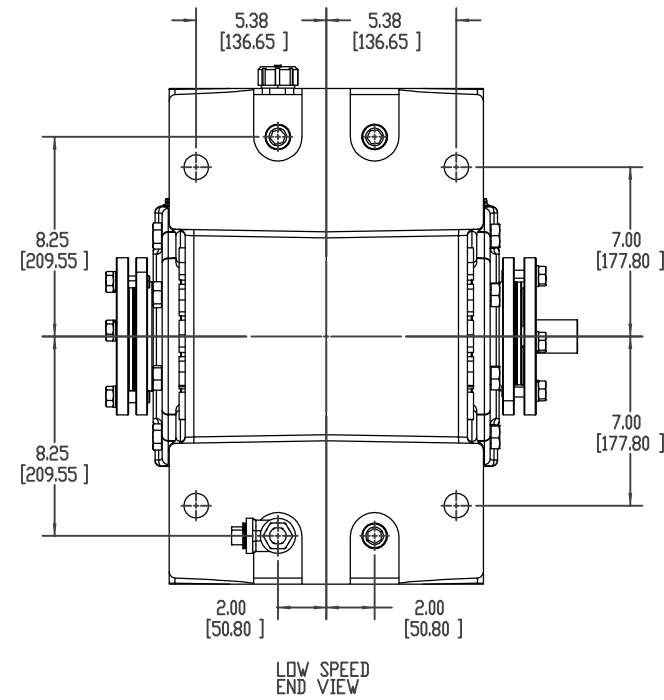
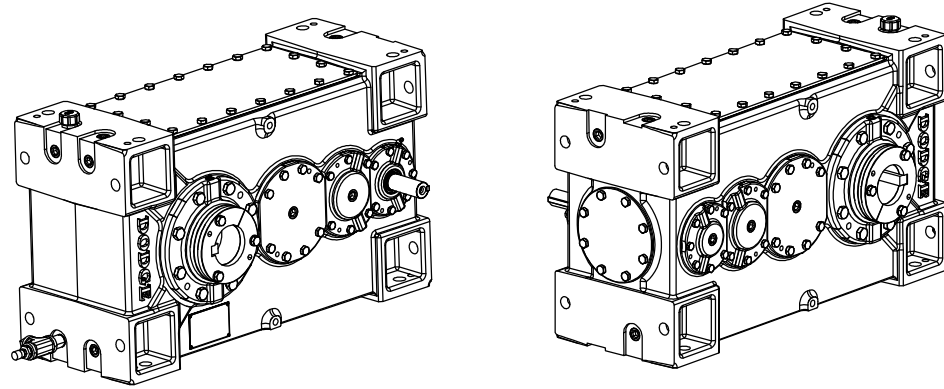
MODEL NUMBER: 150K

OVERALL RATIO: -----:1

AGMA CLASS 1 RATING: ----- HP @ ----- RPM

SERVICE FACTOR: -----

1127 Lbs.



BORE DIA.	'A'	'B'
3-7/16"	2.943"	7/8"
3-3/16"	2.768"	3/4"
3"	2.577"	3/4"
2-15/16"	2.514"	3/4"
2-7/8"	2.45"	3/4"
2-11/16"	2.338"	5/8"
2-1/2"	2.148"	5/8"
2-7/16"	2.443"	5/8"
2-3/8"	2.021"	5/8"
2-1/4"	1.972"	1/2"
2-3/16"	1.909"	1/2"
90mm	81mm	25mm
85mm	76mm	22mm
80mm	71mm	22mm
75mm	67.5mm	20mm
70mm	62.5mm	20mm
65mm	58mm	18mm
60mm	53mm	18mm

BALDOR-DODGE-RELIANCE PROPRIETARY & CONFIDENTIAL
 THIS DRAWING IS THE PROPERTY OF BALDOR-DODGE-RELIANCE AND/OR ITS SUBSIDIARIES AND IS NOT TO BE USED, DUPLICATED OR DISCLOSED WITHOUT THE EXPRESS WRITTEN PERMISSION OF THE COMPANY.

ECR#485	A	3/4/09	BL	RG	CHANGED SPACER FROM 452267 TO 453382
ECR. NO.	REV	REV DATE	BY	APP'D	REVISION DESCRIPTION

MATERIAL: DIMENSION TOLERANCE UNLESS OTHERWISE SPECIFIED
 MACHINE TOL PER S022
 FABRICATION TOL PER S356
 CASTING TOL PER S249
 BRK ALL SHRP CORNERS 0.005-0.015

PRODUCT: MAGNAGEAR 100K
 PART: PARALLEL INPUT-HOLLOW OUTPUT TRIPLE REDUCTION ASSEMBLY LAYOUT

TREATMENT: DRAWN BY: BL, DESIGNED BY: CN, APPROVED BY: MK, DATE: 8/15/08, CHECKED BY: MK, DATE: 8/15/08, SUPERVISOR: MK, DATE: 8/15/08, SCALE: 1:4, SHEET NUMBER: 1 OF 4, SHEET NUMBER: 1 OF 4, REV: B

BALDOR • DODGE DRAWING NUMBER: 452241-HLW