

CUSTOMER ORDER NO: _____

3 STAGE REDUCER

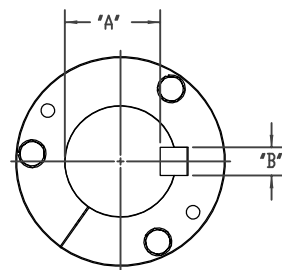
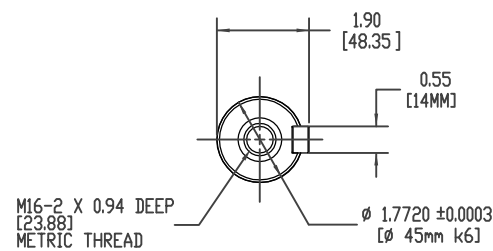
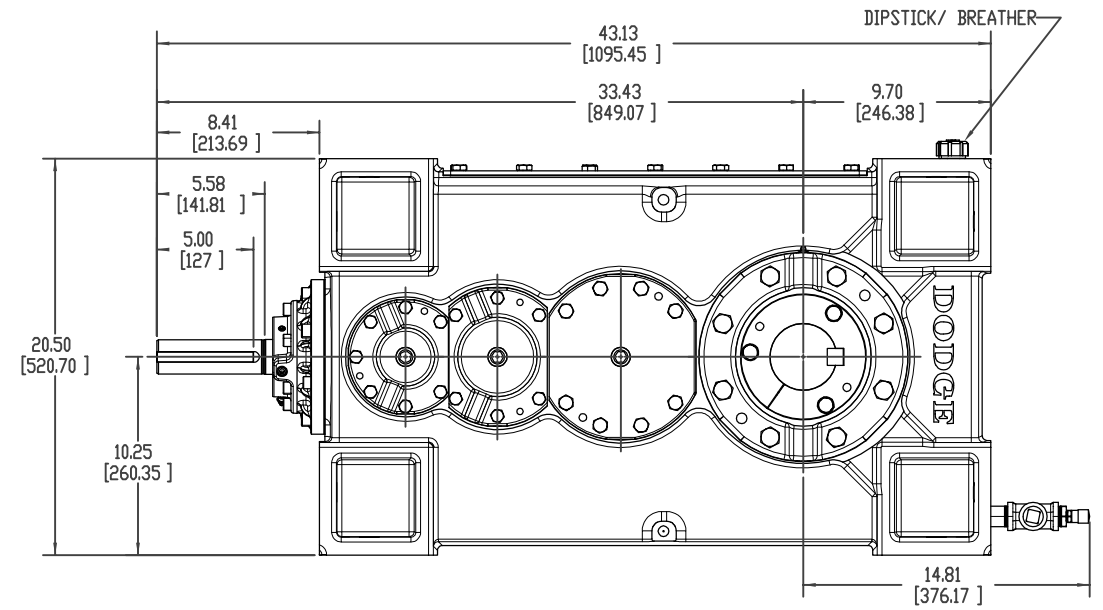
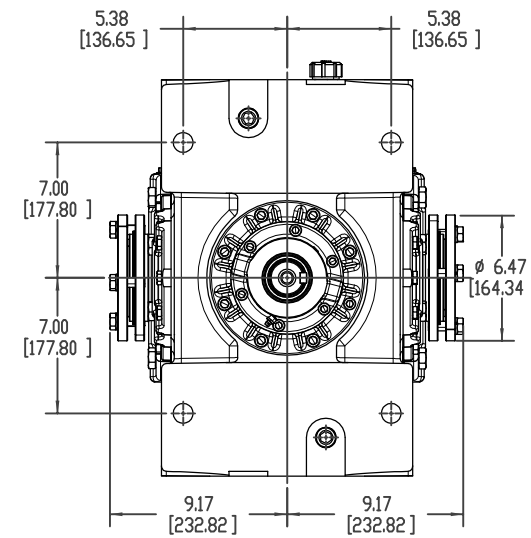
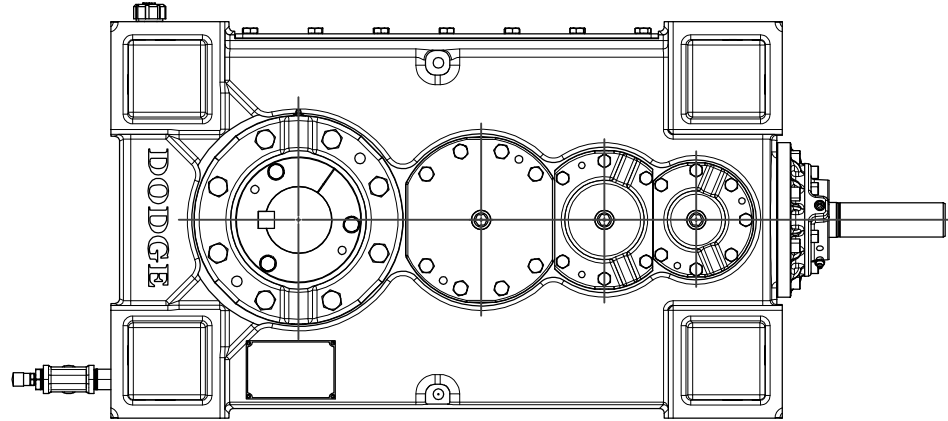
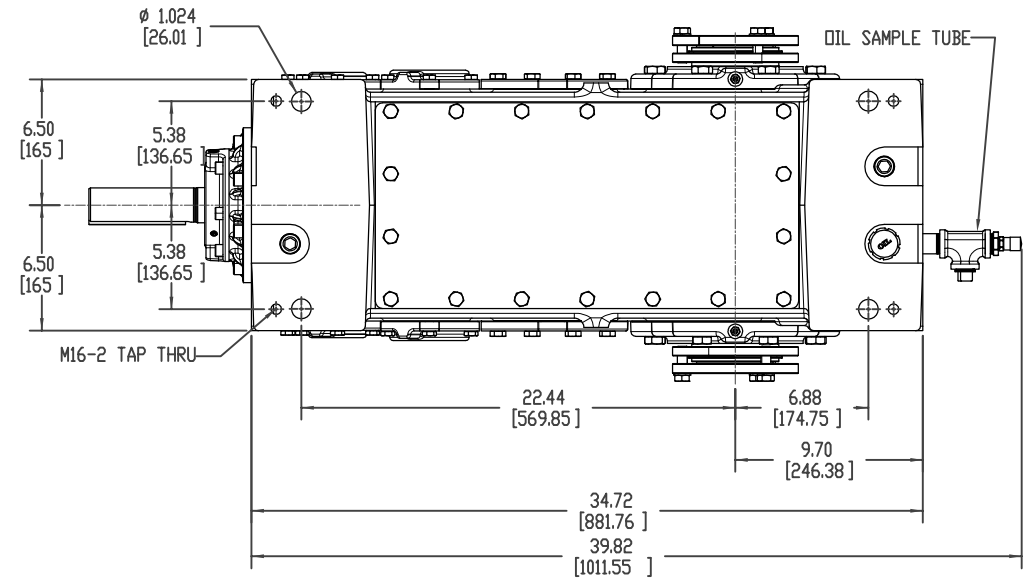
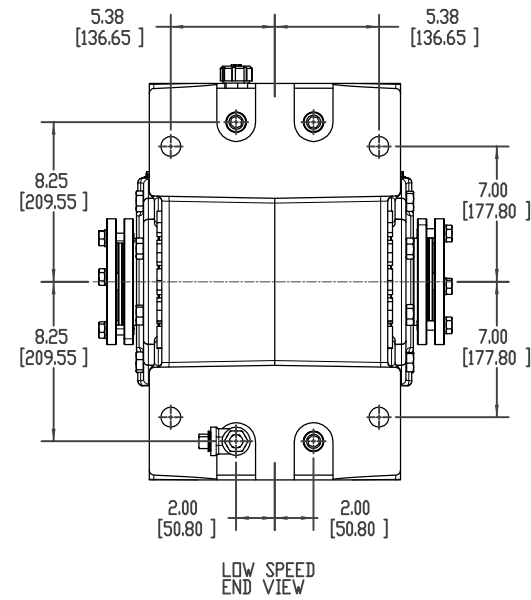
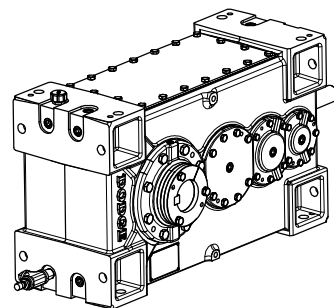
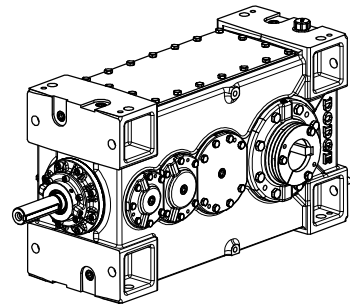
MODEL NUMBER: 150K

OVERALL RATIO: _____:1

AGMA CLASS 1 RATING: _____ HP @ _____ RPM

SERVICE FACTOR: _____

1245 Lbs.



SEE PAGE #24 FOR OUTPUT HUB DETAIL

BORE DIA.	'A'	'B'
3-7/16"	2.943"	7/8"
3-3/16"	2.768"	3/4"
3"	2.577"	3/4"
2-15/16"	2.514"	3/4"
2-7/8"	2.45"	3/4"
2-11/16"	2.338"	5/8"
2-1/2"	2.148"	5/8"
2-7/16"	2.443"	5/8"
2-3/8"	2.021"	5/8"
2-1/4"	1.972"	1/2"
2-3/16"	1.909"	1/2"
90mm	81mm	25mm
85mm	76mm	22mm
80mm	71mm	22mm
75mm	67.5mm	20mm
70mm	62.5mm	20mm
65mm	58mm	20mm
60mm	53mm	18mm

BALDOR-DODGE-RELIANCE PROPRIETARY & CONFIDENTIAL- THIS DRAWING IS THE PROPERTY OF BALDOR-DODGE-RELIANCE AND/OR ITS SUBSIDIARIES AND IS NOT TO BE USED, DUPLICATED OR DISCLOSED WITHOUT THE EXPRESS WRITTEN PERMISSION OF THE COMPANY.						ECR#485	A	3/3/09	RG	CHANGED BOM CHART FROM 452267 TO 453382
MATERIAL		DIMENSION TOLERANCE UNLESS OTHERWISE SPECIFIED		PRODUCT		MAGNAGEAR 100K		DIST		
CASTING OR FORGING NO.		MACHINE TOL PER S022 FABRICATION TOL PER S356 CASTING TOL PER S249 BRK ALL SHRP CORNERS 0.005-0.015		PART		RIGHT ANGLE HOLLOW OUTPUT ASSEMBLY LAYOUT		SHEET NUMBER		
TREATMENT		DRAWN BY: BL		CHECKED BY: CN		APPROVED BY: MK		DATE: 7/24/08		
		DATE: 7/24/08		DATE: 7/24/08		DATE: 7/24/08		SHEET NUMBER: 2 OF 4		
BALDOR • DODGE						DRAWING NUMBER: 452100-hlw				