

CUSTOMER ORDER NO: -----

2 STAGE REDUCER

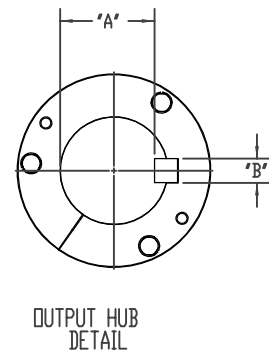
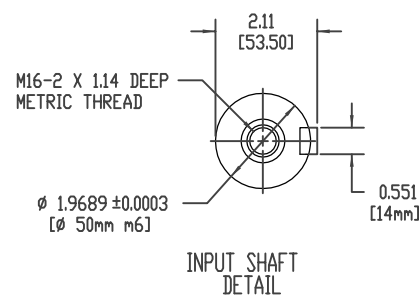
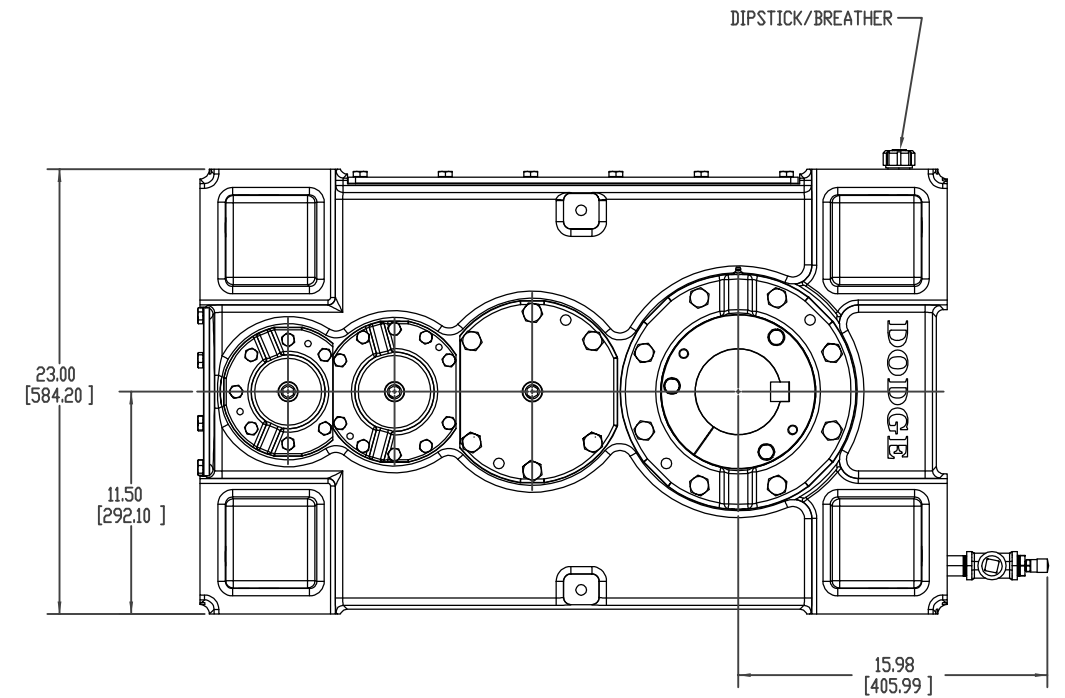
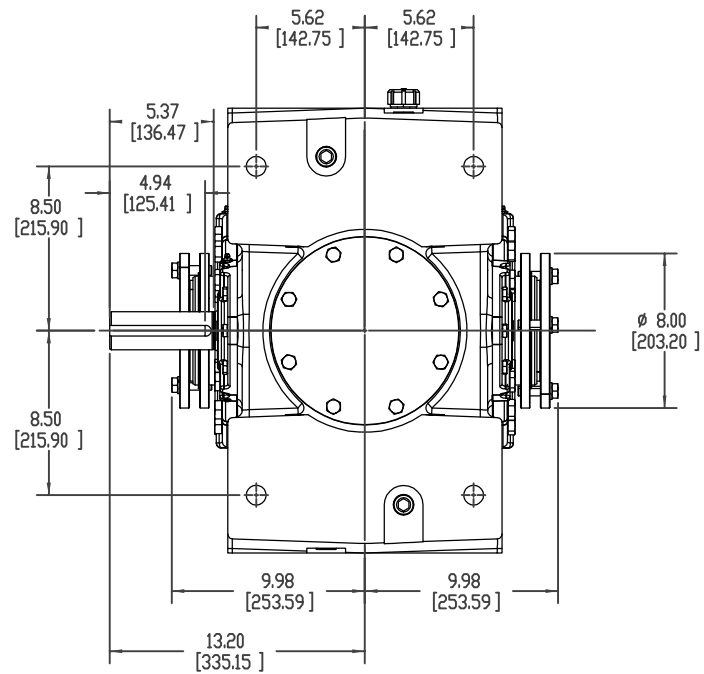
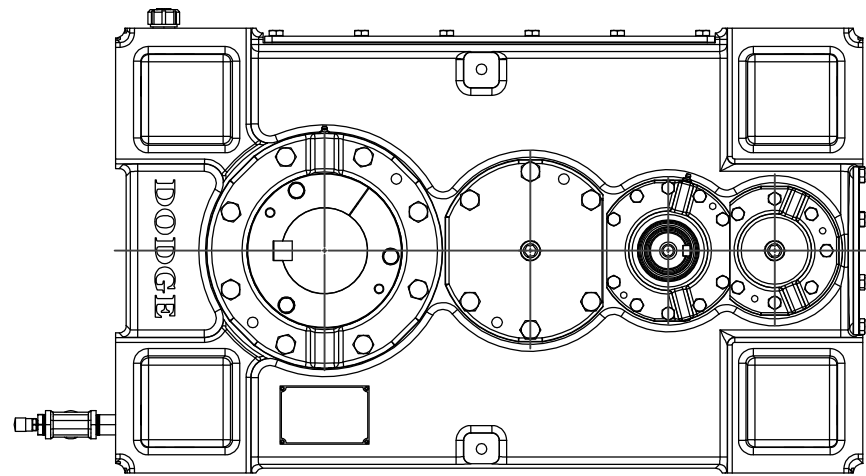
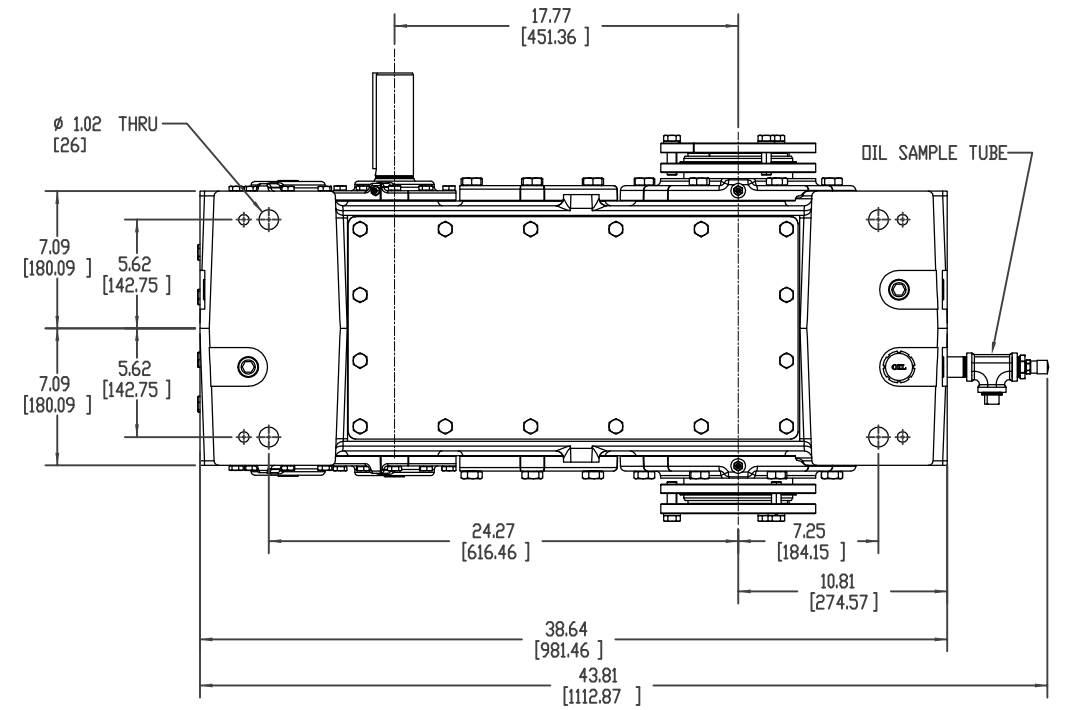
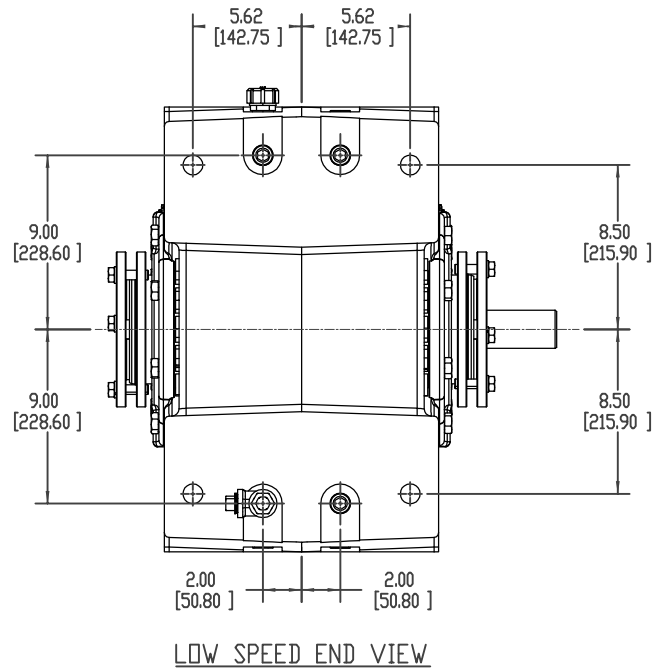
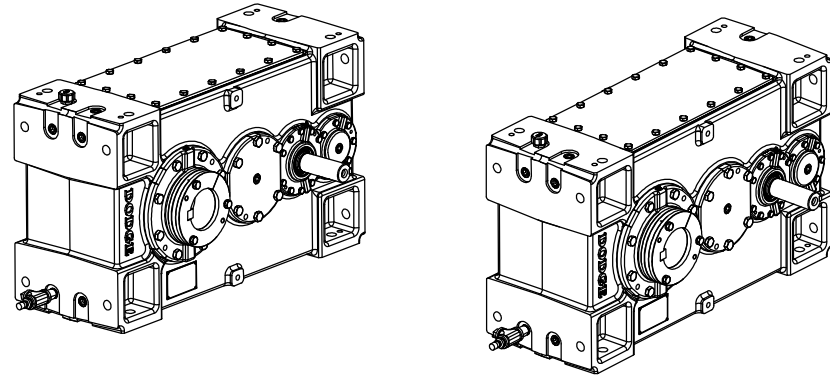
MODEL NUMBER: 150K

OVERALL RATIO: -----:1

AGMA CLASS 1 RATING: ----- HP @ ----- RPM

SERVICE FACTOR: -----

1556 Lbs.



BORE DIA.	'A'	'B'
4-7/16"	3.880"	1"
4-3/16"	3.627"	1"
3-15/16"	3.373"	1"
3-7/16"	2.943"	7/8"
3-3/16"	2.768"	3/4"
3"	2.577"	3/4"
2-15/16"	2.514"	3/4"
110mm	100mm	28mm
100mm	90mm	28mm
95mm	86mm	25mm
90mm	81mm	25mm
85mm	76mm	22mm
80mm	71mm	22mm
75mm	67.5mm	20mm

BALDOR-DODGE PROPRIETARY & CONFIDENTIAL
THIS DRAWING IS THE PROPERTY OF BALDOR-DODGE-RELIANCE AND/OR ITS SUBSIDIARIES AND IS NOT TO BE USED, DUPLICATED OR DISCLOSED WITHOUT THE EXPRESS WRITTEN PERMISSION OF THE COMPANY.

MATERIAL		DIMENSION TOLERANCE UNLESS OTHERWISE SPECIFIED		PRODUCT		REVISION DESCRIPTION	
MACHINE TOL PER S022		FABRICATION TOL PER S356		MAGNAGEAR 150K			
CASTING TOL PER S249		BRK ALL SHRP CORNERS 0.005-0.015		PART PARALLEL INPUT - HOLLOW OUTPUT DOUBLE REDUCTION ASSEMBLY LAYOUT			
DRAWN BY ESTERLE		DESIGNED BY ESTERLE		APPROVED BY KONRUFF		DATE 03/13/2008	
DATE 03/13/2008		DATE 03/13/2008		DATE 03/13/2008		SCALE 1:5	
DRAWING NUMBER		DIPSTICK/BREATHER		DIPSTICK/BREATHER		SHEET NUMBER 2 OF 4	

BALDOR • DODGE 453339-HLW