

CUSTOMER ORDER NO: _____

3 STAGE REDUCER

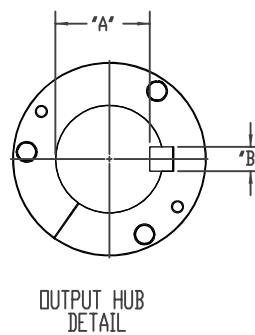
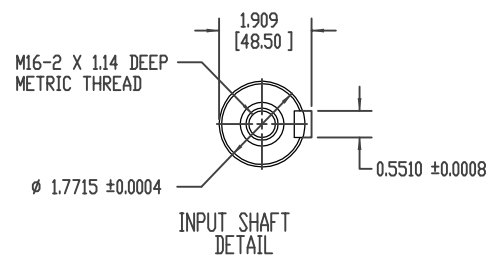
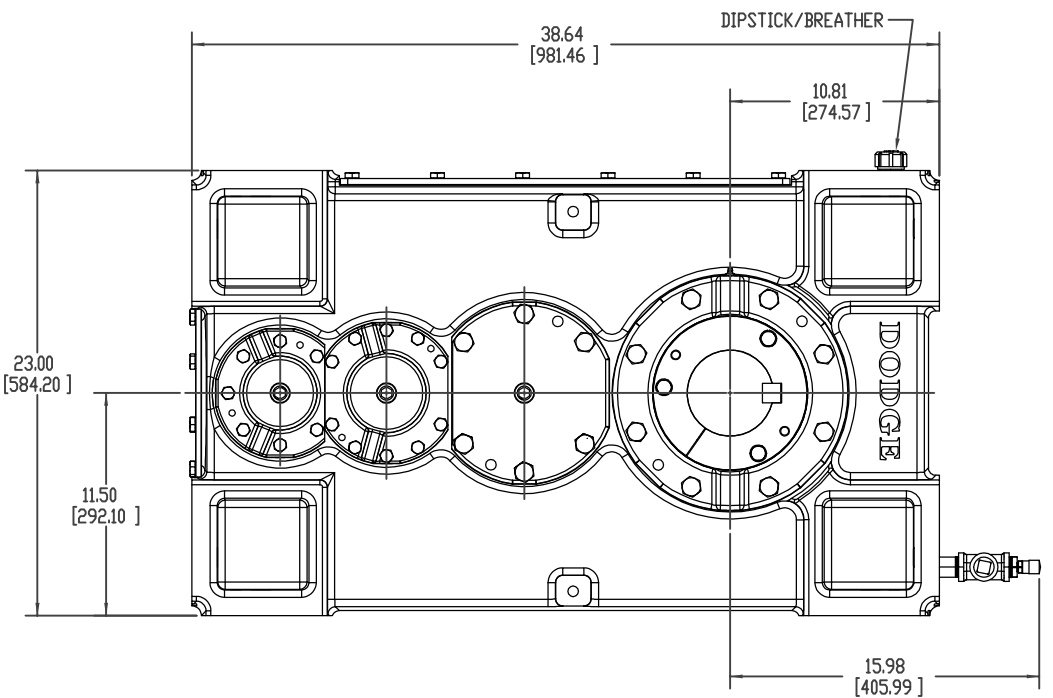
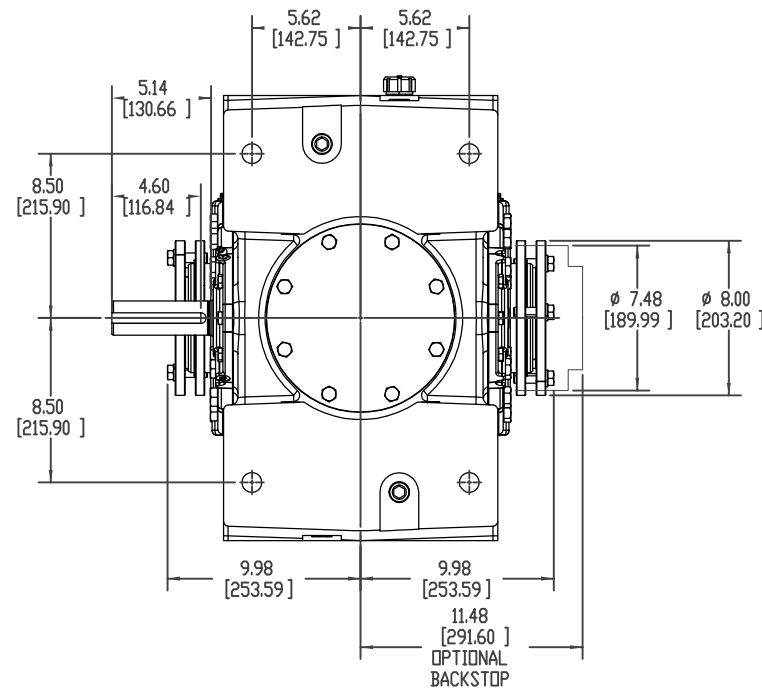
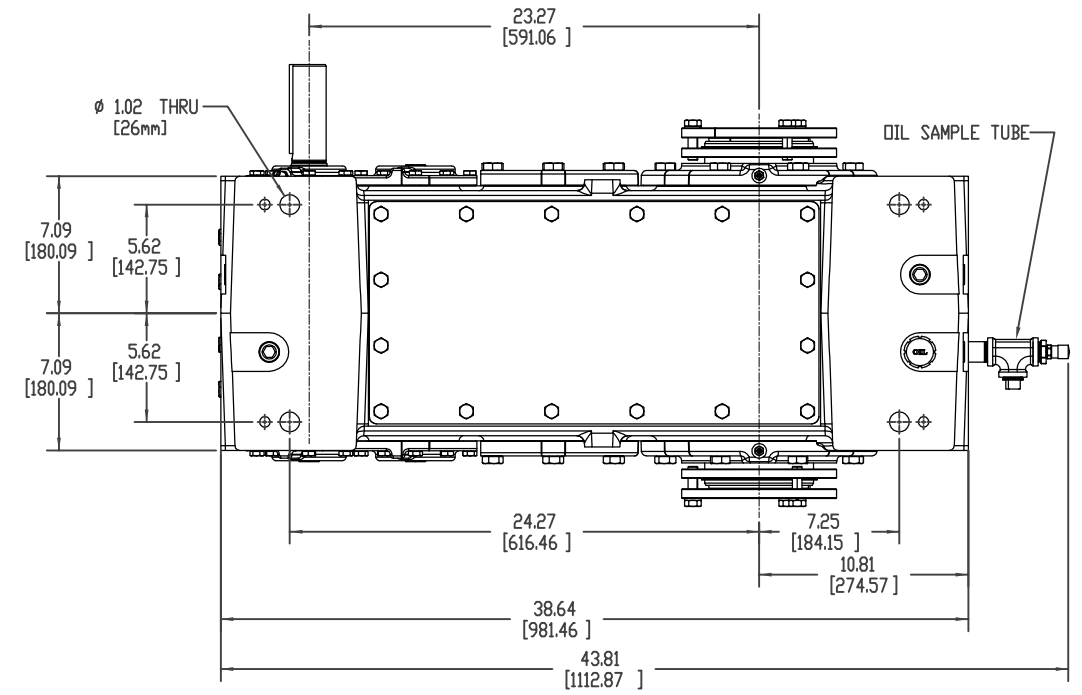
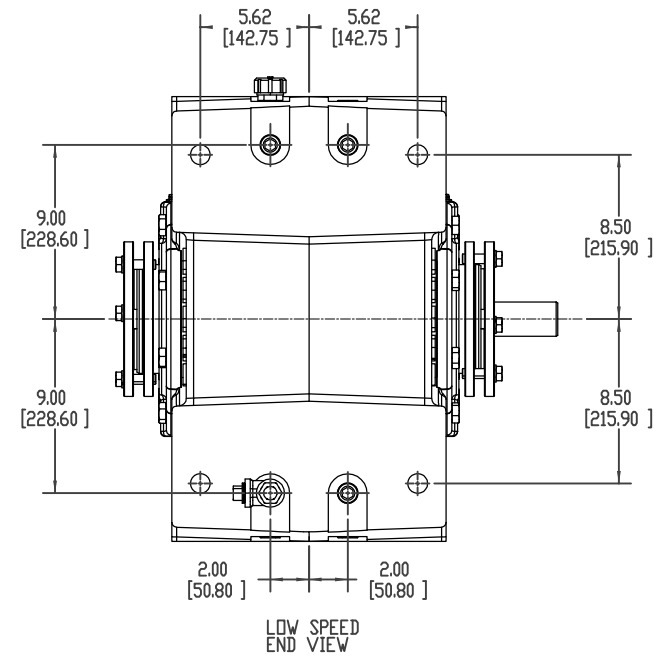
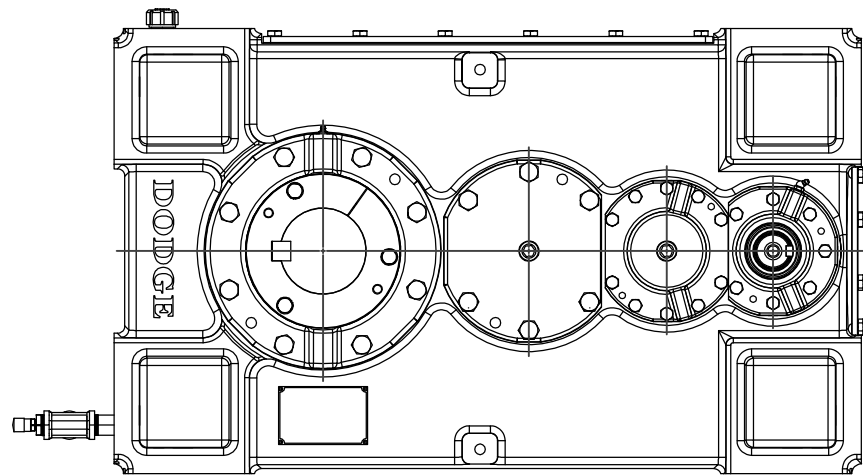
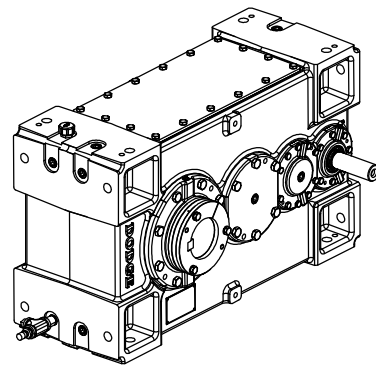
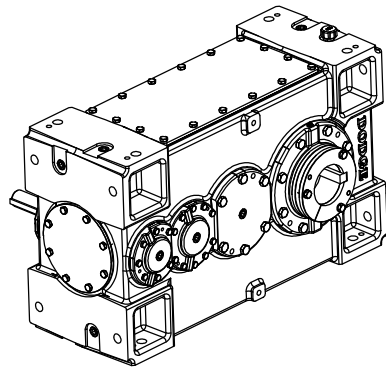
MODEL NUMBER: 150K

OVERALL RATIO: _____:1

AGMA CLASS 1 RATING: _____ HP @ _____ RPM

SERVICE FACTOR: _____

1593 Lbs.



BORE DIA.	"A"	"B"
4-7/16"	3.880"	1"
4-3/16"	3.627"	1"
3-15/16"	3.373"	1"
3-7/16"	2.943"	7/8"
3-3/16"	2.768"	3/4"
3"	2.577"	3/4"
2-15/16"	2.514"	3/4"
110mm	100mm	28mm
100mm	90mm	28mm
95mm	86mm	25mm
90mm	81mm	25mm
85mm	76mm	22mm
80mm	71mm	22mm
75mm	67.5mm	20mm

BALDOR-DODGE PROPRIETARY & CONFIDENTIAL
THIS DRAWING IS THE PROPERTY OF BALDOR-DODGE-RELIANCE AND/OR ITS SUBSIDIARIES AND IS NOT TO BE USED, DUPLICATED OR DISCLOSED WITHOUT THE EXPRESS WRITTEN PERMISSION OF THE COMPANY.

DATE	REV	BY	APP'D	REVISION DESCRIPTION
	A	05/30/05	TFE, MK	REVISED HOLLOW HUB KEY P/N'S

MATERIAL	DIMENSION TOLERANCE UNLESS OTHERWISE SPECIFIED	PRODUCT	REV
	MACHINE TOL PER S022	MAGNAGEAR 150K	
	FABRICATION TOL PER S356		
	CASTING TOL PER S249		
	BRK ALL SHRP CORNERS 0.005-0.015		

TREATMENT	DRAWN BY	DESIGNED BY	APPROVED BY	DATE	DATE	DATE	DATE	DATE	DATE	DATE	DATE
	ESTERLE	ESTERLE	KONRUFF	15	03/19/2008	03/19/2008	03/19/2008				

PARALLEL INPUT - HOLLOW OUTPUT TRIPLE REDUCTION ASSEMBLY LAYOUT

BALDOR • DODGE 452840-HLW

DRAWING NUMBER: 452840-HLW

SHEET NUMBER: 2 OF 4