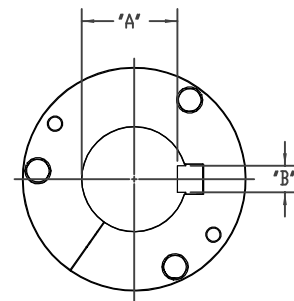
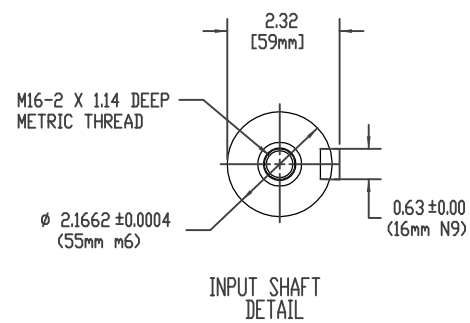
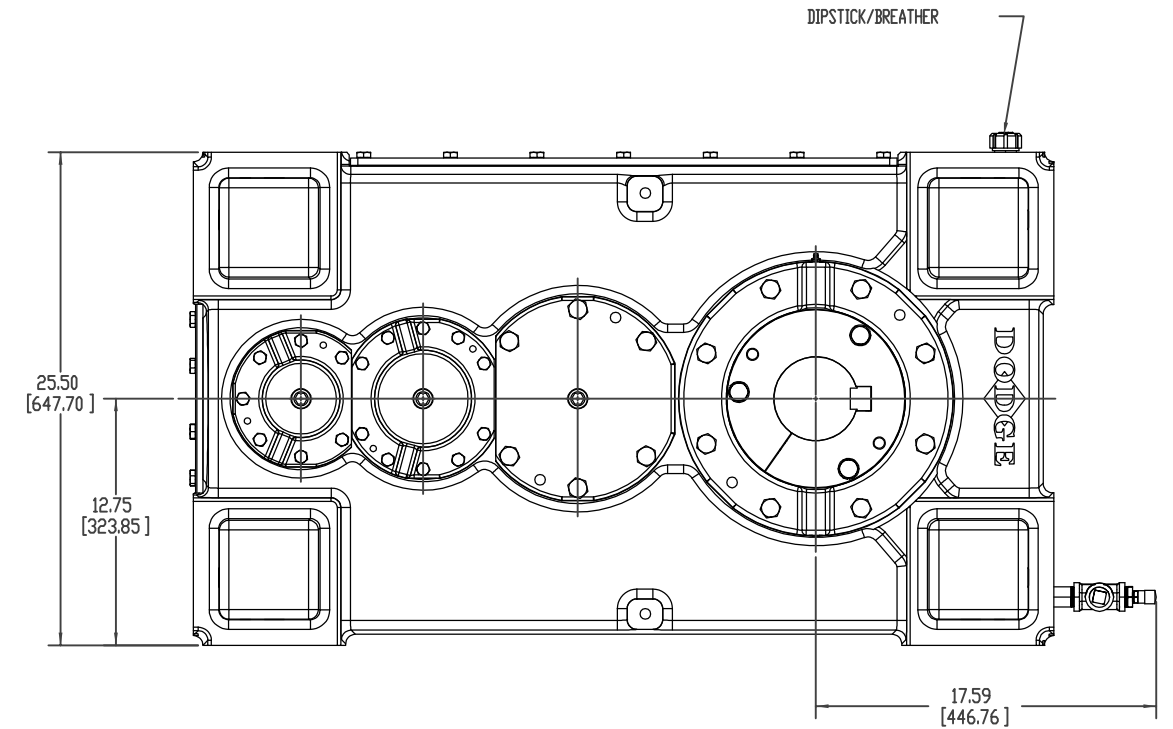
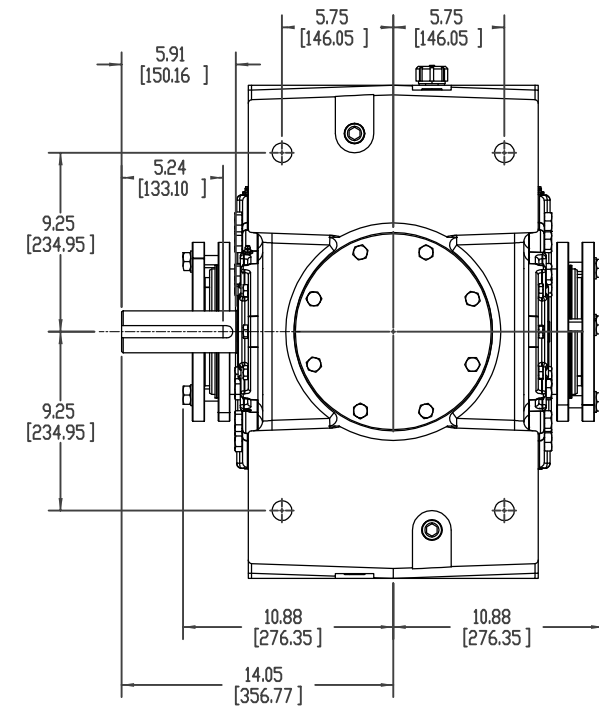
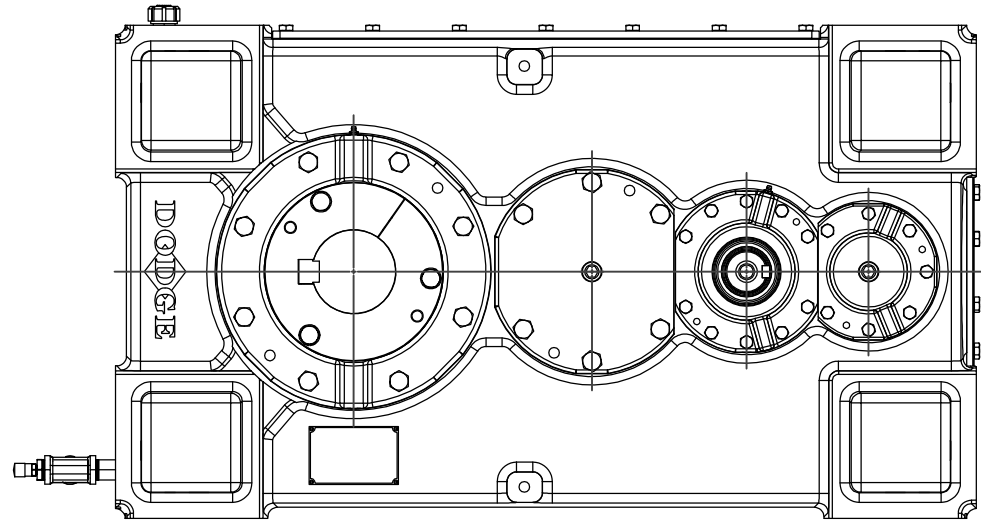
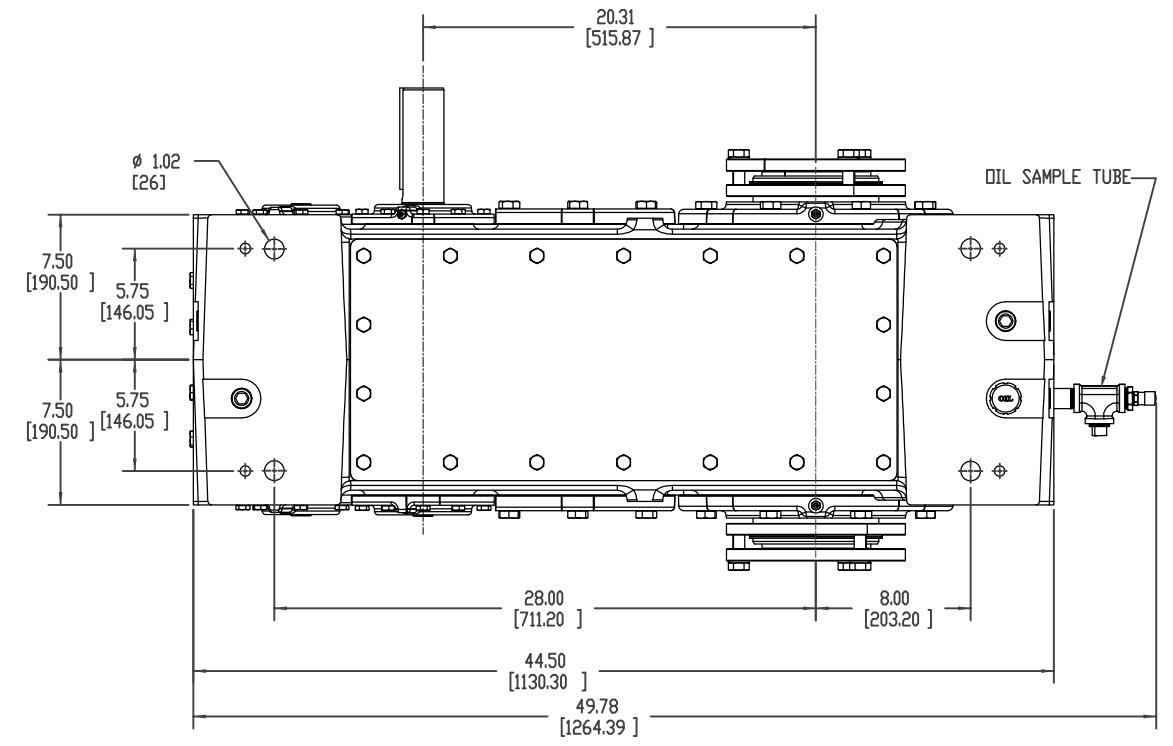
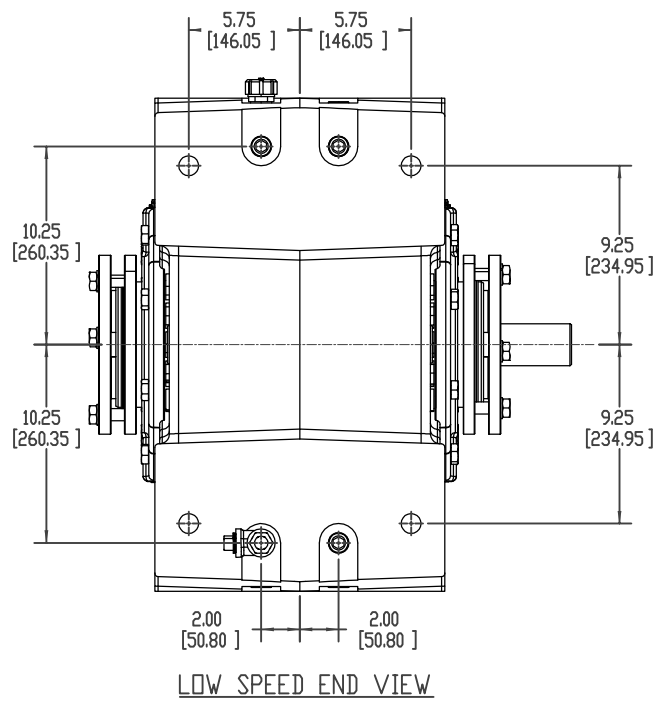
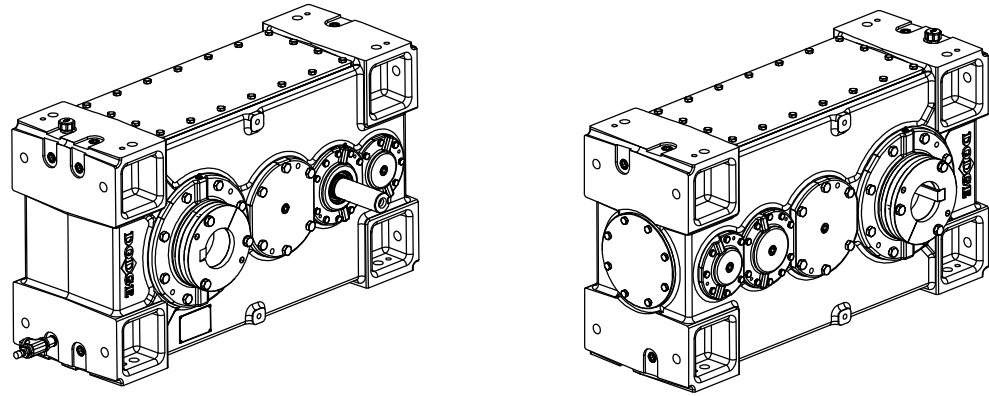


CUSTOMER ORDER NO: -----

3 STAGE REDUCER
 MODEL NUMBER: 210K
 OVERALL RATIO: -----:1
 AGMA CLASS 1 RATING: ----- HP @ ----- RPM
 SERVICE FACTOR: -----
 2057 Lbs.



BORE DIA.	'A'	'B'
4-15/16"	4.232"	1-1/4"
4-7/16"	3.880"	1"
4-3/16"	3.627"	1"
3-15/16"	3.373"	1"
3-7/16"	2.943"	7/8"
130mm	118mm	40mm
125mm	114mm	32mm
120mm	109mm	32mm
110mm	100mm	28mm
100mm	90mm	28mm
95mm	86mm	25mm
90mm	81mm	25mm

BALDOR-DODGE PROPRIETARY & CONFIDENTIAL
 THIS DRAWING IS THE PROPERTY OF BALDOR-DODGE-RELIANCE
 AND/OR ITS SUBSIDIARIES AND IS NOT TO BE USED, DUPLICATED
 OR DISCLOSED WITHOUT THE EXPRESS WRITTEN PERMISSION
 OF THE COMPANY.

MATERIAL	DIMENSION TOLERANCE UNLESS OTHERWISE SPECIFIED	PRODUCT	REVISION DESCRIPTION
	MACHINE TOL PER S022 FABRICATION TOL PER S356 CASTING TOL PER S249 BRK ALL SHRP CORNERS 0.005-0.015	MAGNAGEAR 210K	
CASTING OR FORGING NO.		PART	
		PARALLEL INPUT - HOLLOW OUTPUT DOUBLE REDUCTION ASSEMBLY LAYOUT	
TREATMENT	SHAFT BY ESTERLE DATE 01/08/2008	DESIGNED BY ESTERLE DATE 01/08/2008	APPROVED BY KONRUFF DATE 01/08/2008
		SCALE 15	ORDER NUMBER
		SUPERSEDES	ESTIMATE NUMBER
		DRAWING NUMBER	SHEET NUMBER
			2 OF 4
			REV

BALDOR • DODGE 453340-HLW