

CUSTOMER ORDER NO: -----

3 STAGE REDUCER

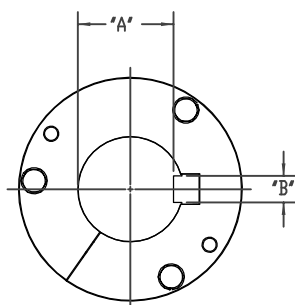
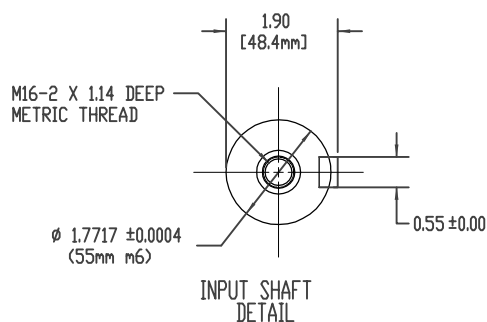
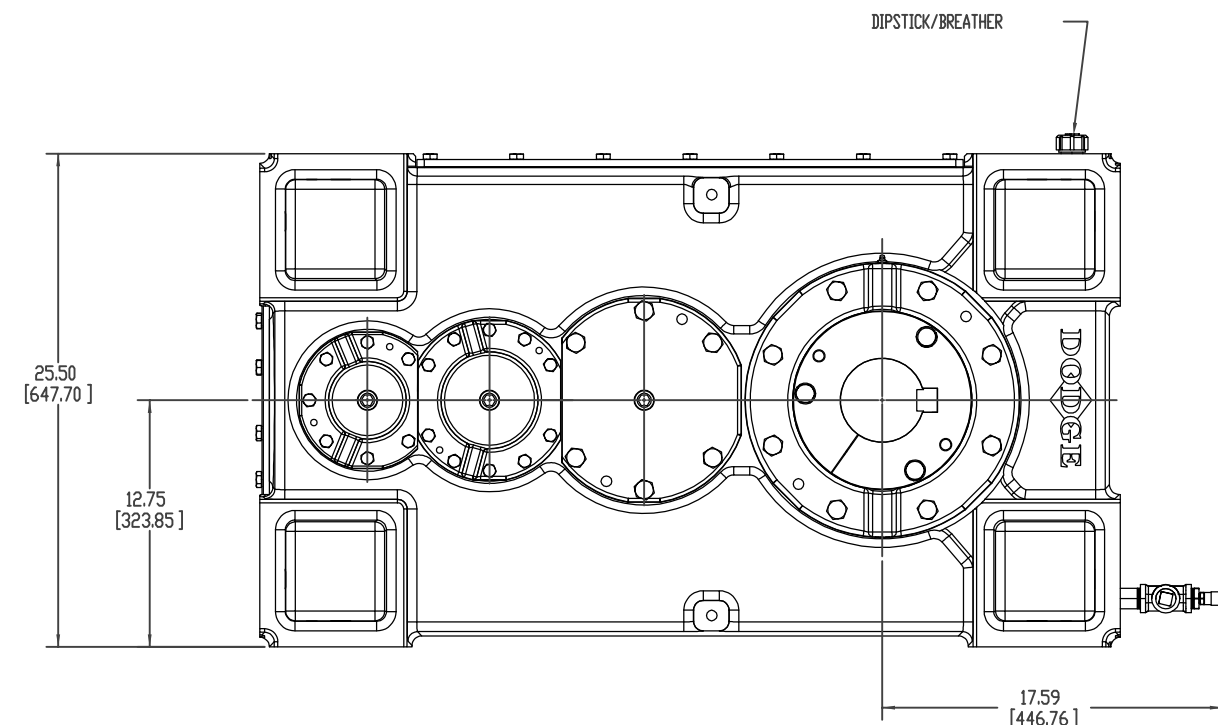
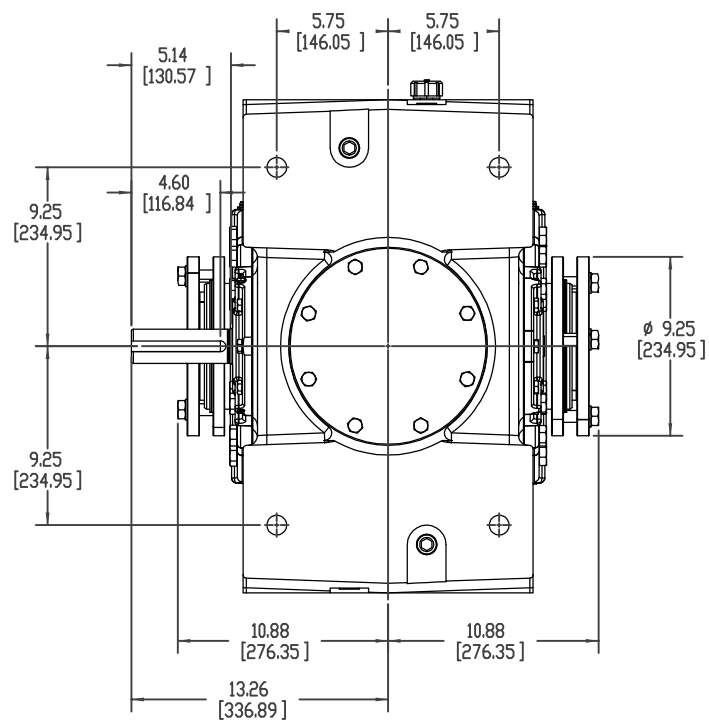
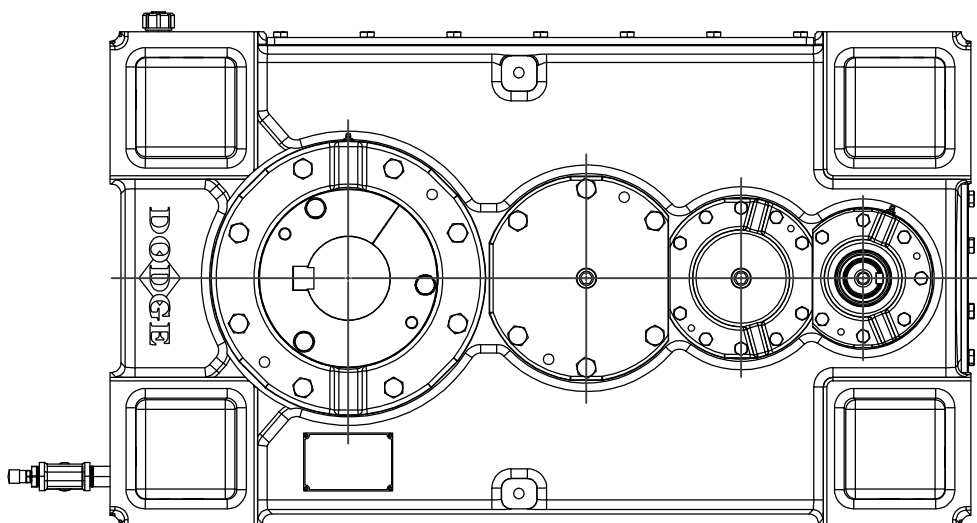
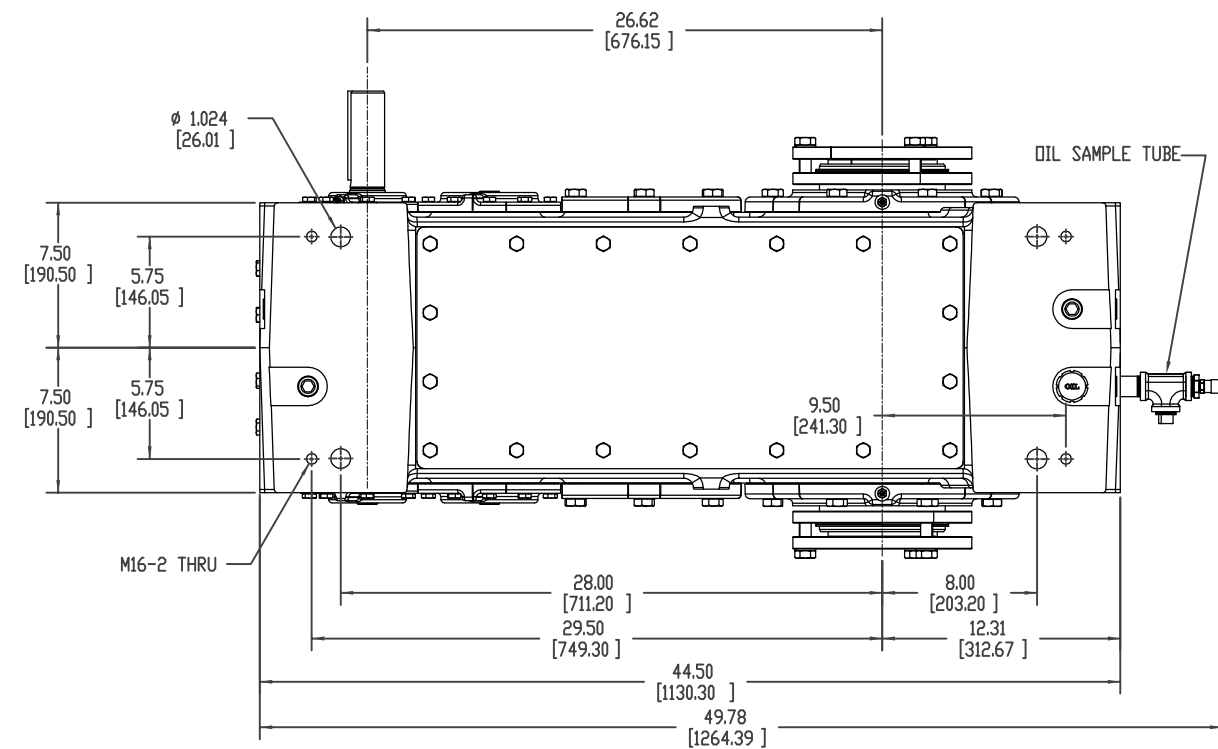
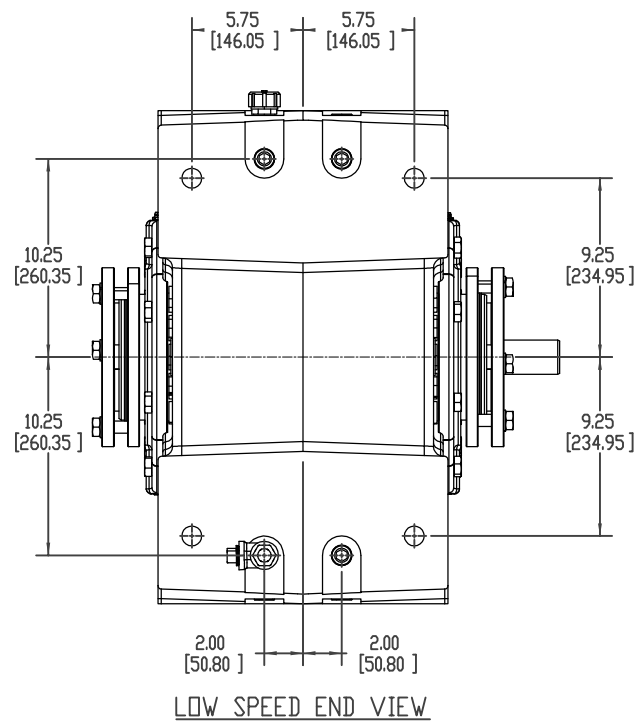
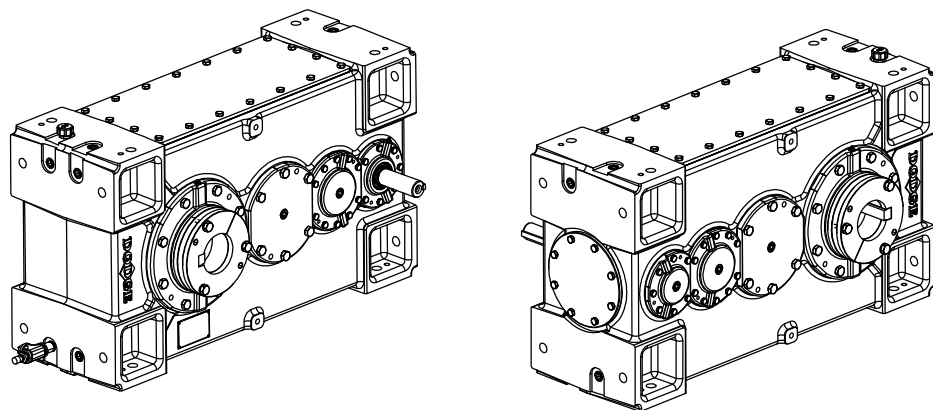
MODEL NUMBER: 210K

OVERALL RATIO: -----:1

AGMA CLASS 1 RATING: ----- HP @ ----- RPM

SERVICE FACTOR: -----

2111 Lbs.



BORE DIA.	'A'	'B'
4-15/16"	4.232"	1-1/4"
4-7/16"	3.880"	1"
4-3/16"	3.627"	1"
3-15/16"	3.373"	1"
3-7/16"	2.943"	7/8"
130mm	118mm	40mm
125mm	114mm	32mm
120mm	109mm	32mm
110mm	100mm	28mm
100mm	90mm	28mm
95mm	86mm	25mm
90mm	81mm	25mm

BALDOR-DODGE-RELIANCE PROPRIETARY & CONFIDENTIAL
THIS DRAWING IS THE PROPERTY OF BALDOR-DODGE-RELIANCE AND/OR ITS SUBSIDIARIES AND IS NOT TO BE USED, DUPLICATED OR DISCLOSED WITHOUT THE EXPRESS WRITTEN PERMISSION OF THE COMPANY.

MATERIAL		DIMENSION TOLERANCE UNLESS OTHERWISE SPECIFIED		PRODUCT		REVISION DESCRIPTION	
MACHINE TOL PER S022		FABRICATION TOL PER S356		MAGNAGEAR 210K			
CASTING OR FORGING NO.		CASTING TOL PER S249		PART		TEST	
BRK ALL SHRP CORNERS 0.005-0.015		DRAWN BY ESTERLE		DESIGNED BY ESTERLE		APPROVED BY KONRUFF	
DATE 01/08/2008		DATE 01/08/2008		DATE 01/08/2008		DATE 01/08/2008	
SHEET 15		SHEET 15		SHEET 15		SHEET 15	
DRAWING NUMBER		DRAWING NUMBER		DRAWING NUMBER		DRAWING NUMBER	

BALDOR • DODGE 453040-HLW