

CUSTOMER ORDER NO: -----

3 STAGE REDUCER

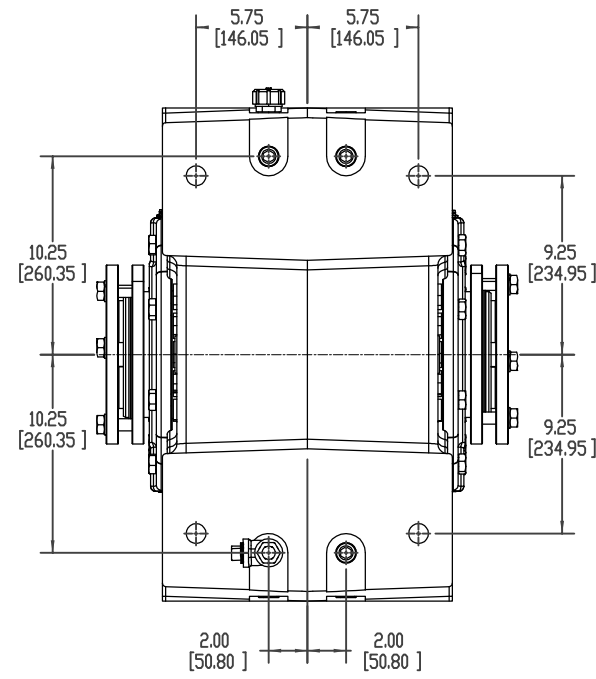
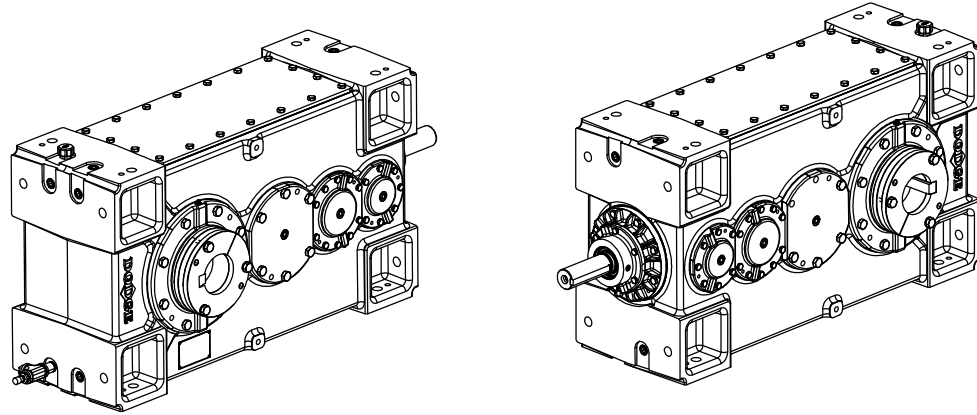
MODEL NUMBER: 210K

OVERALL RATIO: -----:1

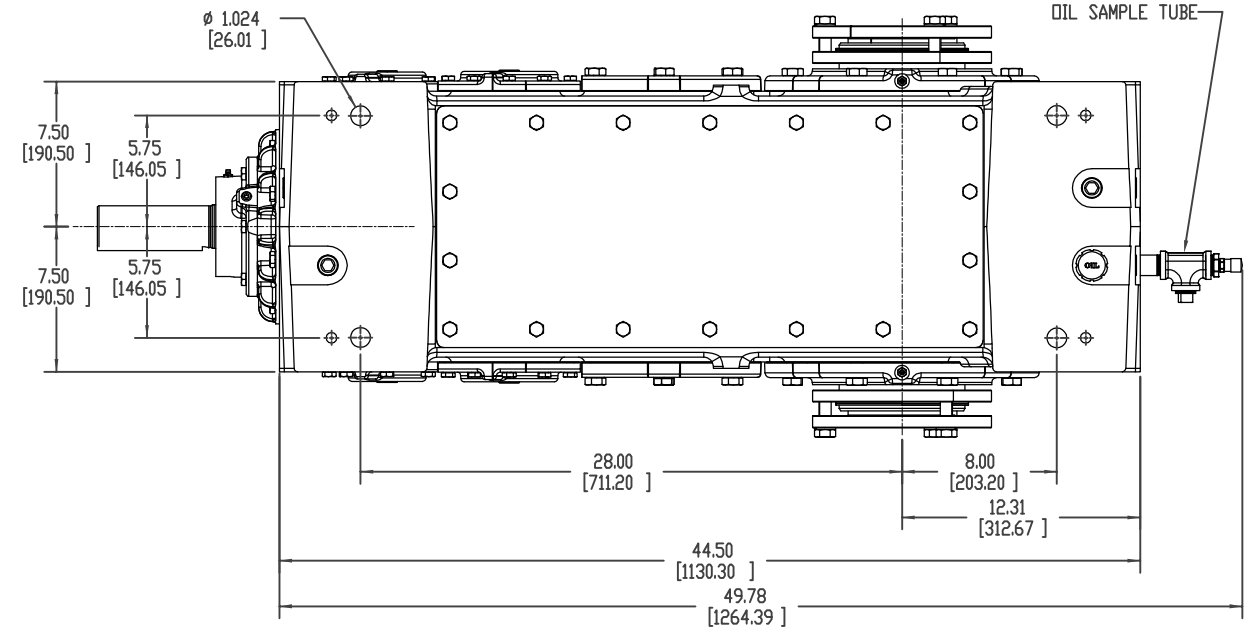
AGMA CLASS 1 RATING: ----- HP @ ----- RPM

SERVICE FACTOR: -----

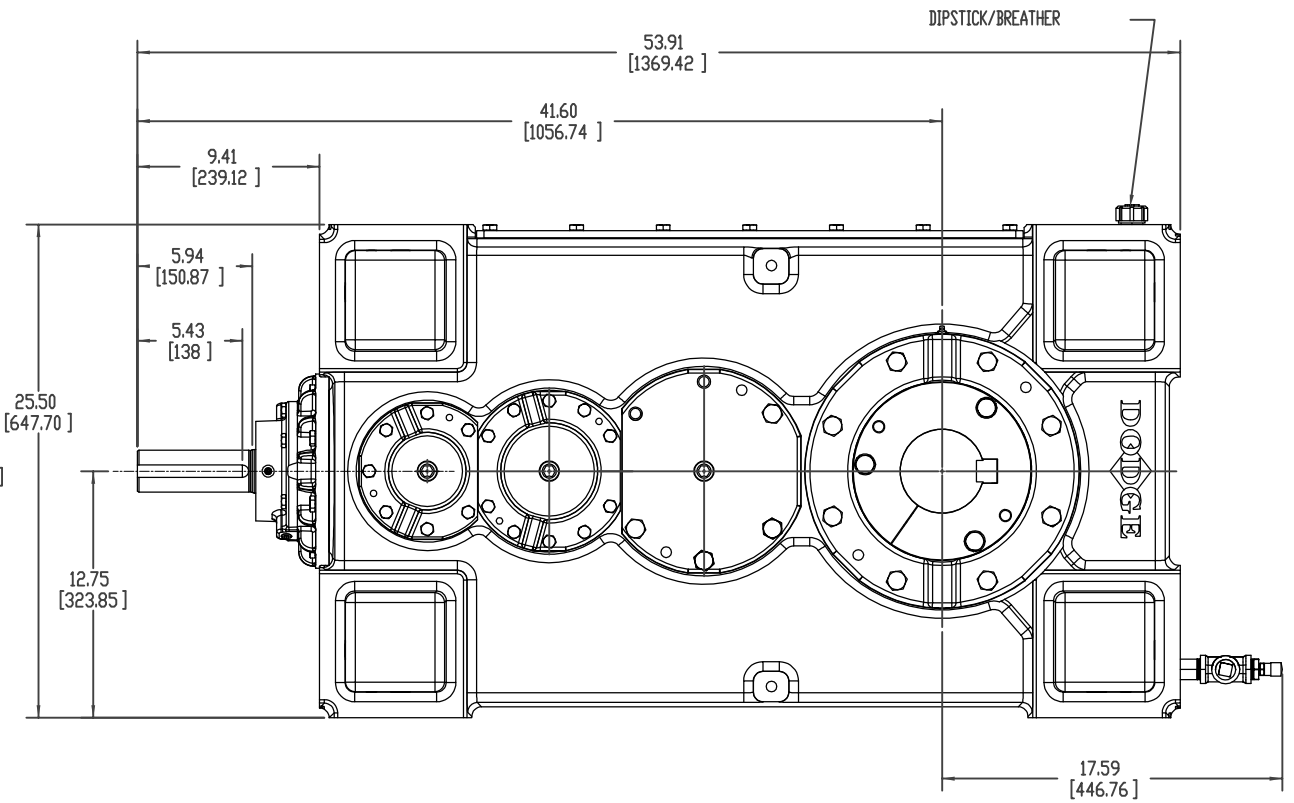
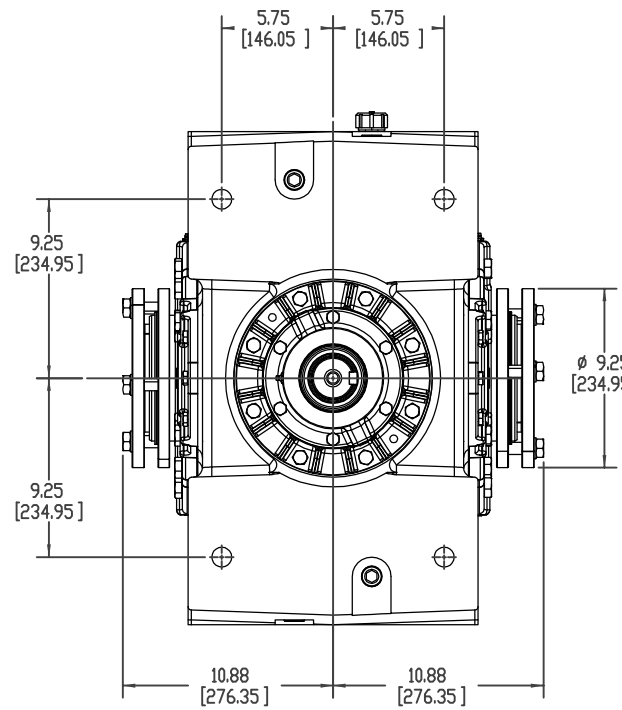
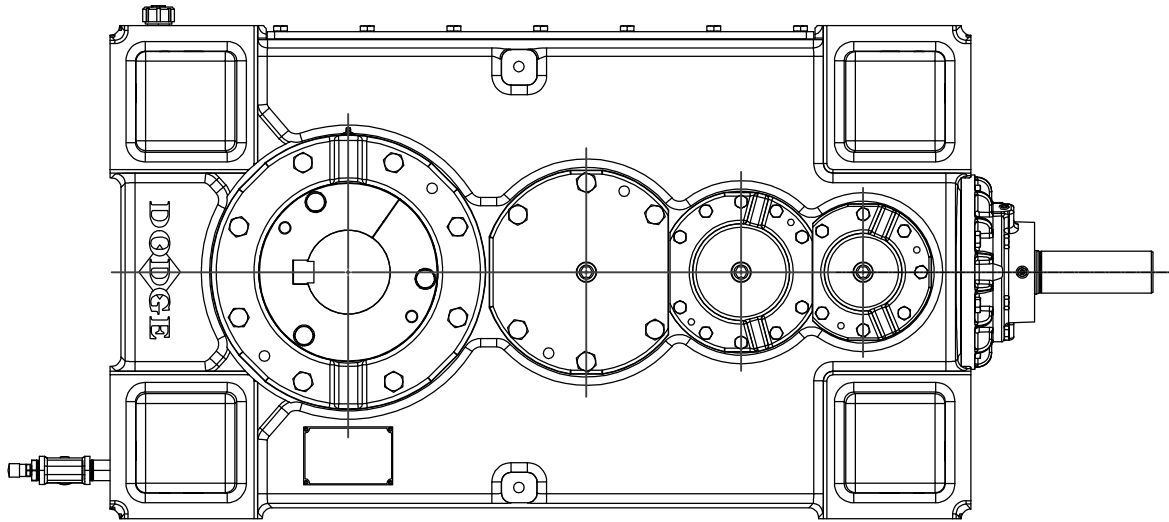
2175 Lbs.



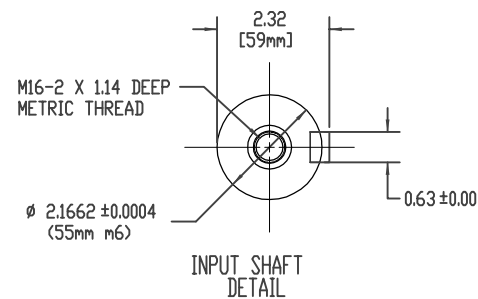
LOW SPEED END VIEW



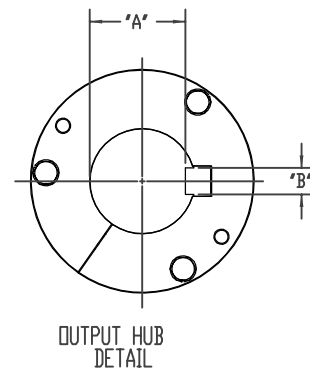
OIL SAMPLE TUBE



DIPSTICK/BREATHER



INPUT SHAFT
DETAIL



OUTPUT HUB
DETAIL

BORE DIA.	*A*	*B*
4-15/16"	4.232"	1-1/4"
4-7/16"	3.880"	1"
4-3/16"	3.627"	1"
3-15/16"	3.373"	1"
3-7/16"	2.943"	7/8"
130mm	118mm	40mm
125mm	114mm	32mm
120mm	109mm	32mm
110mm	100mm	28mm
100mm	90mm	28mm
95mm	86mm	25mm
90mm	81mm	25mm

BALDOR-DODGE-RELIANCE PROPRIETARY & CONFIDENTIAL
THIS DRAWING IS THE PROPERTY OF BALDOR-DODGE-RELIANCE AND/OR ITS SUBSIDIARIES AND IS NOT TO BE USED, DUPLICATED OR DISCLOSED WITHOUT THE EXPRESS WRITTEN PERMISSION OF THE COMPANY.

ECR#489	B	3/5/09	BL	KW	CHANGE RATIO TO REFLECT ACTUAL RATIO
	A	02/23/2009	FJK	DBM	REVISED DWG
ECR NO.	REV	REV DATE	BY	APP'D	REVISION DESCRIPTION

MATERIAL: DIMENSION TOLERANCE UNLESS OTHERWISE SPECIFIED
MACHINE TOL PER S022
FABRICATION TOL PER S356
CASTING TOL PER S249
BRK ALL SHRP CORNERS 0.005-0.015

PRODUCT: MAGNAGEAR 210K
PART: RIGHT ANGLE HOLLOW OUTPUT ASSEMBLY LAYOUT

TREATMENT: DRAWN BY: ESTERLE, DATE: 01/08/2008
CHECKED BY: ESTERLE, DATE: 01/08/2008
APPROVED BY: KONRUFF, DATE: 01/08/2008

SCALE: 1:5
SHEET: 15
CUSTOMER NUMBER: 452900-HLW

DRAWING NUMBER: 452900-HLW

SHEET NUMBER: 2 OF 4
REV: 4

BALDOR • DODGE