

CUSTOMER ORDER NO: -----

3 STAGE REDUCER

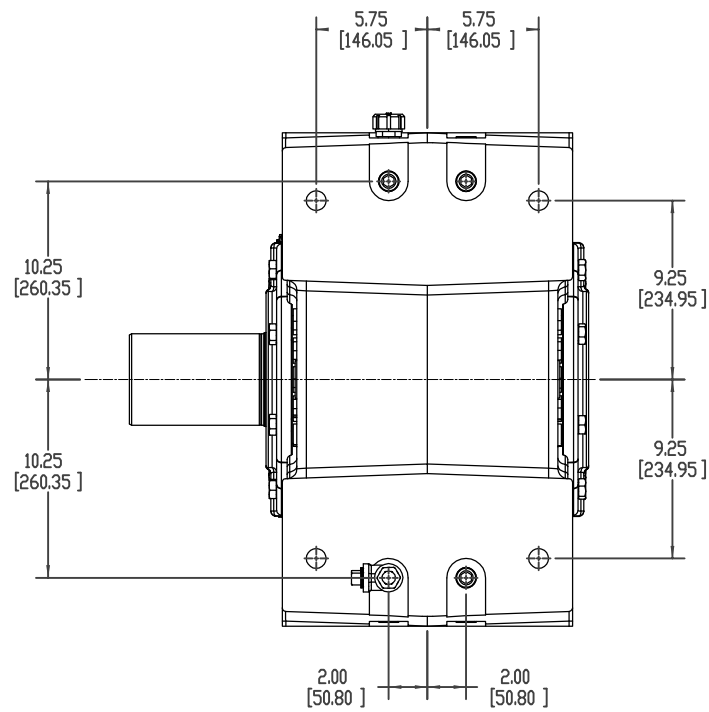
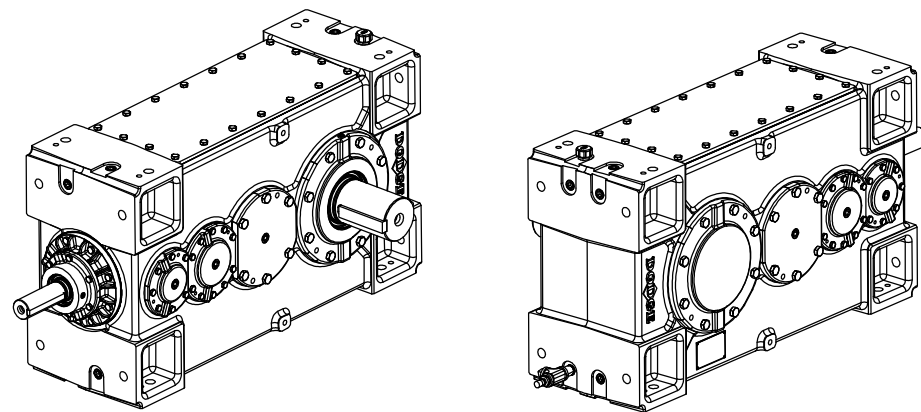
MODEL NUMBER: 210K

OVERALL RATIO: -----:1

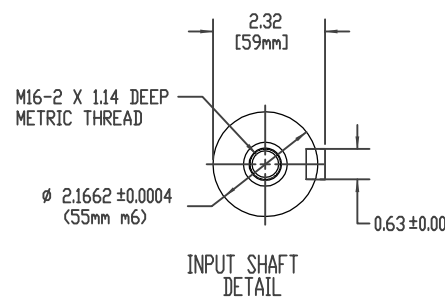
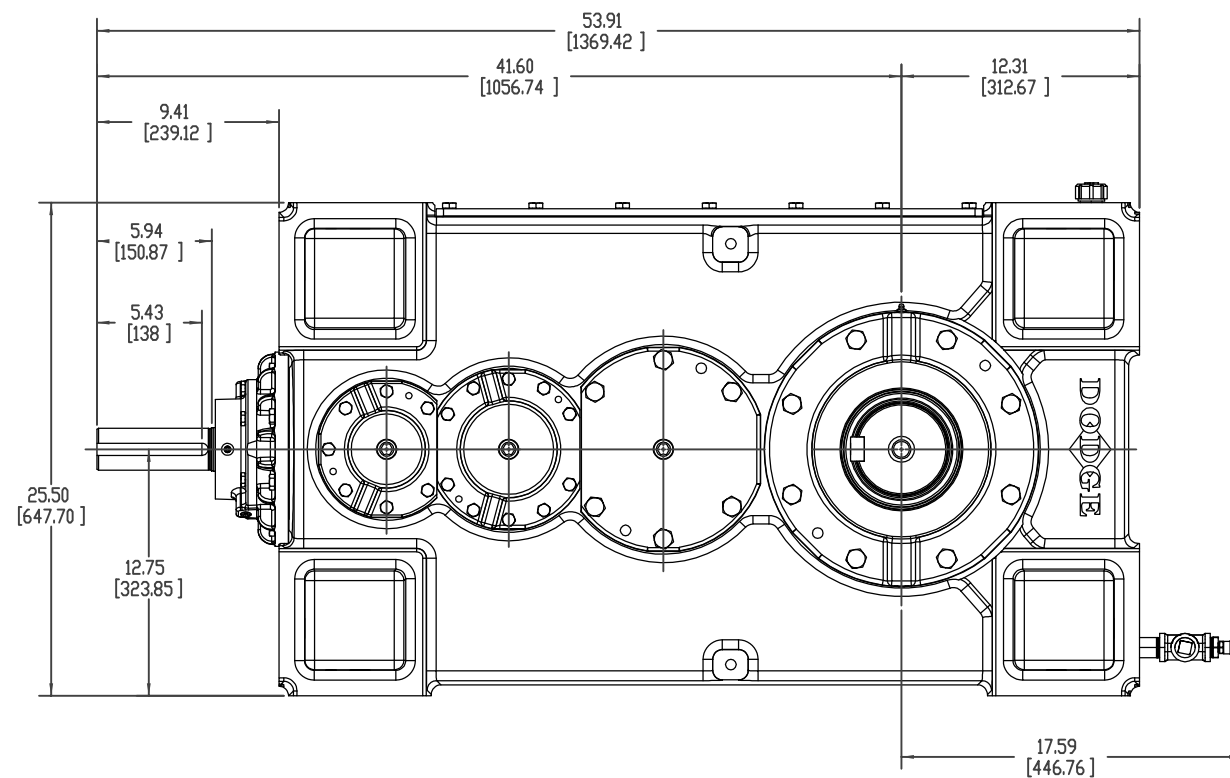
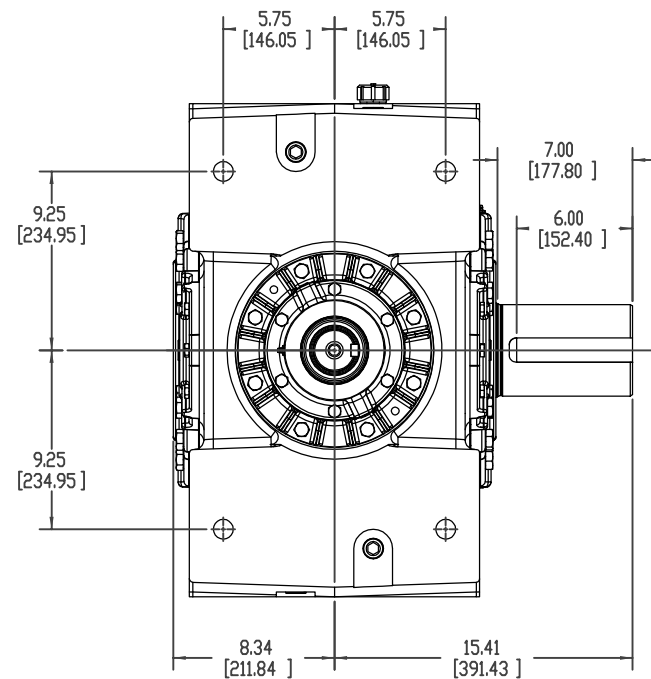
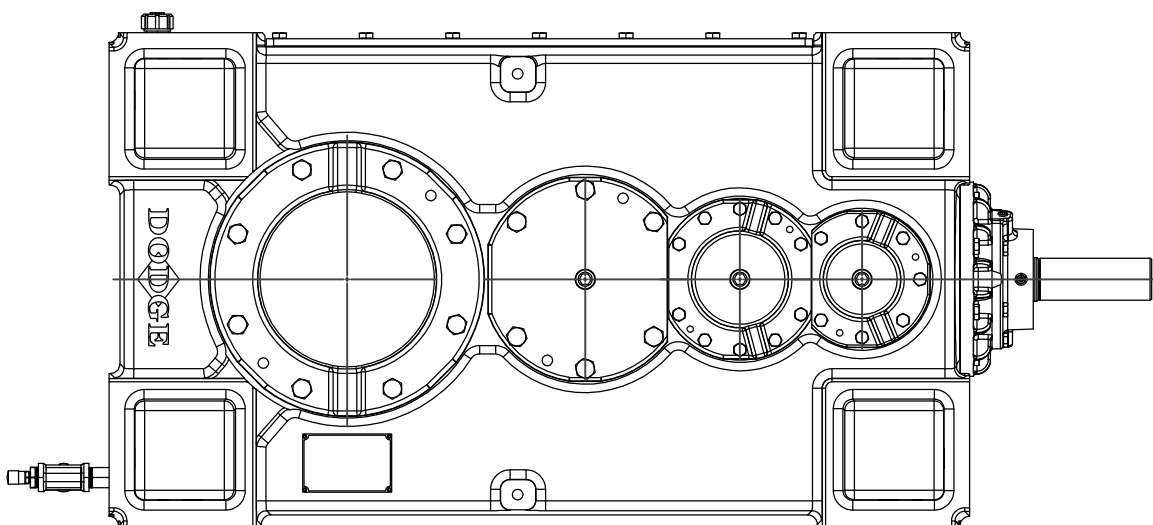
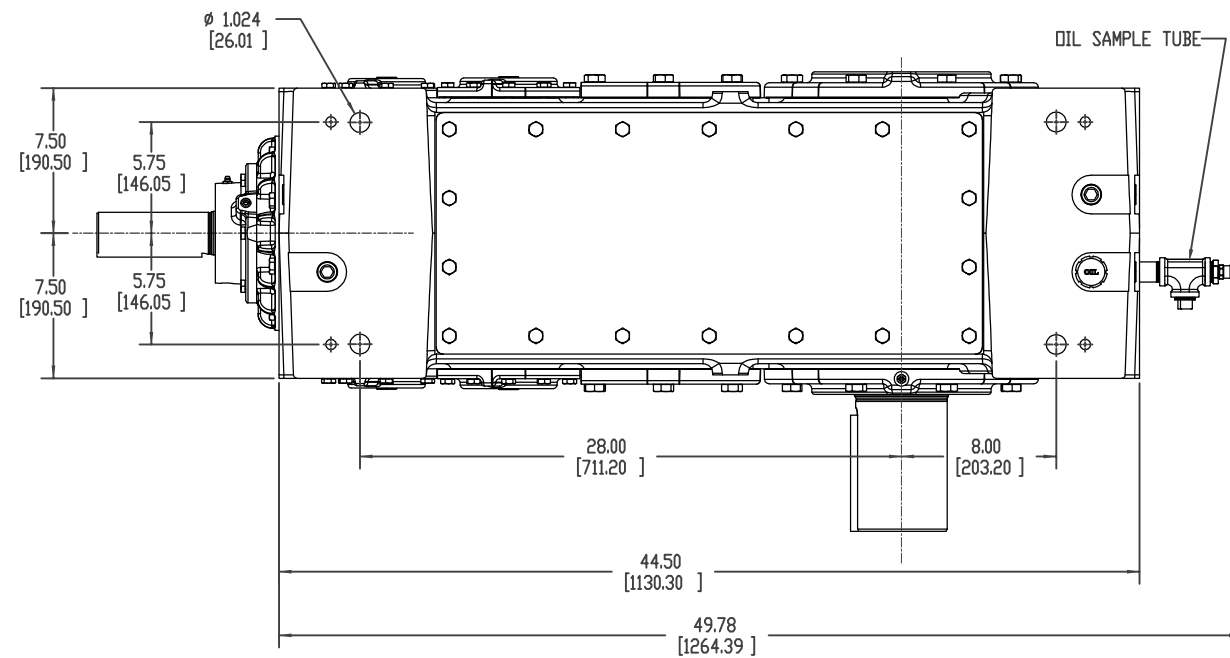
AGMA CLASS 1 RATING: ----- HP @ ----- RPM

SERVICE FACTOR: -----

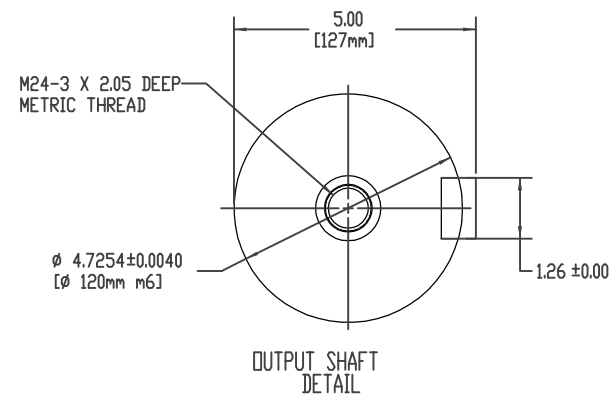
2253 Lbs.



LOW SPEED END VIEW



INPUT SHAFT
DETAIL



OUTPUT SHAFT
DETAIL

BALDOR-DODGE-RELIANCE PROPRIETARY & CONFIDENTIAL THIS DRAWING IS THE PROPERTY OF BALDOR-DODGE-RELIANCE AND/OR ITS SUBSIDIARIES AND IS NOT TO BE USED, DUPLICATED, OR DISCLOSED WITHOUT THE EXPRESS WRITTEN PERMISSION OF THE COMPANY.									
EGR. NO.		REV	REV DATE	BY	APP'D	REVISION DESCRIPTION			
ECRM#489		B	3/5/09	BL	KW	CHANGE RATIO TO REFLECT ACTUAL RATIO			
		A	2/23/09	FJK	DM	REVISED DWG			
MATERIAL		DIMENSION TOLERANCE UNLESS OTHERWISE SPECIFIED				PRODUCT		REV	
CASTING OR FORGING NO.		MACHINE TOL PER S022 FABRICATION TOL PER S356 CASTING TOL PER S249 - BRK ALL SHRP CORNERS 0.005-0.015				MAGNAGEAR 210K		BEST	
		PART				RIGHT ANGLE SOLID OUTPUT ASSEMBLY LAYOUT			
TREATMENT		DRWN BY	DESIGN BY	APPROVED BY	DATE	DATE	DATE	DATE	DATE
		ESTERLE	ESTERLE	KONRUFF	01/08/2008	01/08/2008	01/08/2008	01/08/2008	01/08/2008
		SHEET NUMBER		SHEET NUMBER		SHEET NUMBER		SHEET NUMBER	
		3 OF 4		3 OF 4		3 OF 4		3 OF 4	
		REV		REV		REV		REV	
		-		-		-		-	
DRAWING NUMBER						452900-SLD			
BALDOR • DODGE									