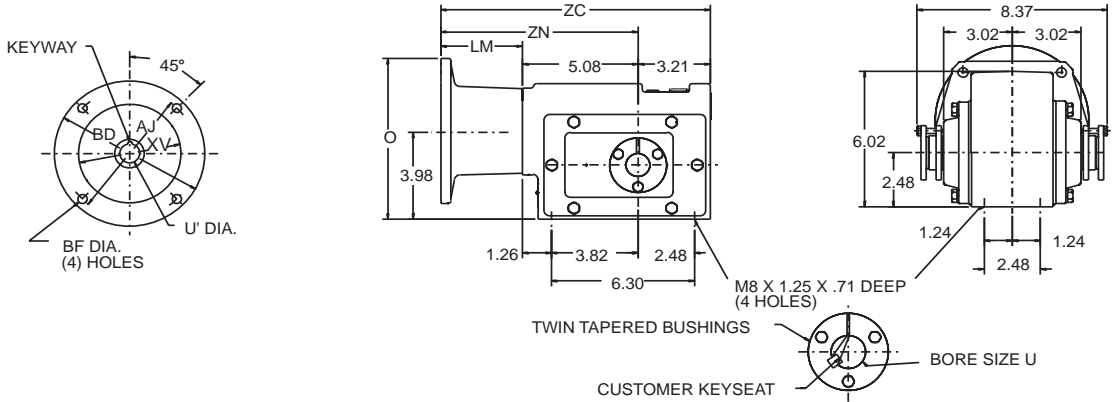


DIMENSIONS



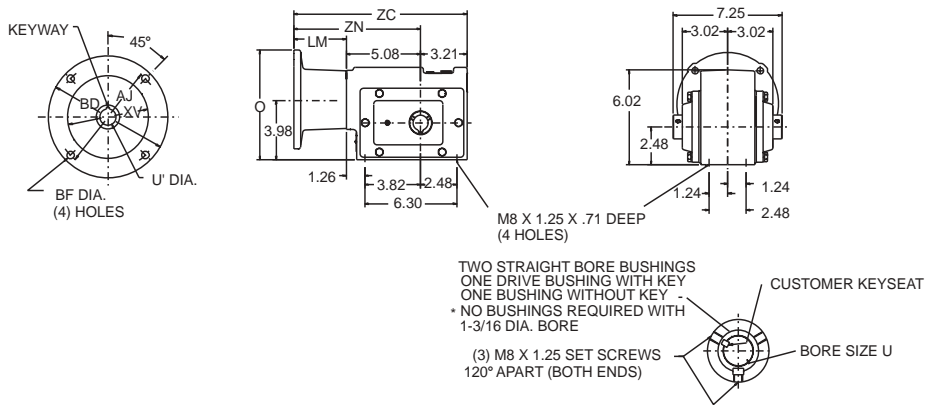
Combination TIGEAR Size C150 HOLLOW SHAFT - TAPERED BUSHING



FRAME SIZE	AJ	BD	BF	U'		KEYWAY	XV (TENON)	ZC	O	LM	ZN
				MIN.	MAX.						
56C	5.88	6.72	0.44	0.626	0.627	3/16 X 3/32	4.501/4.503	11.89	7.34	3.60	8.68
140TC	5.88	6.72	0.44	0.876	0.877	3/16 X 3/32	4.501/4.503	11.89	7.34	3.60	8.68

U	CUSTOMER KEYSEAT REQ'D
1-1/8	1/4 X 1/8 X 7.66
1-1/16	
1-3/16	
1"	
25MM	8MM x 4MM
30MM	

HOLLOW SHAFT - STRAIGHT BORE



FRAME SIZE	AJ	BD	BF	U'		KEYWAY	XV (TENON)	ZC	O	LM	ZN
				MIN.	MAX.						
56C	5.88	6.72	0.44	0.626	0.627	3/16 X 3/32	4.501/4.503	11.89	7.34	3.60	8.68
140TC	5.88	6.72	0.44	0.876	0.877	3/16 X 3/32	4.501/4.503	11.89	7.34	3.60	8.68

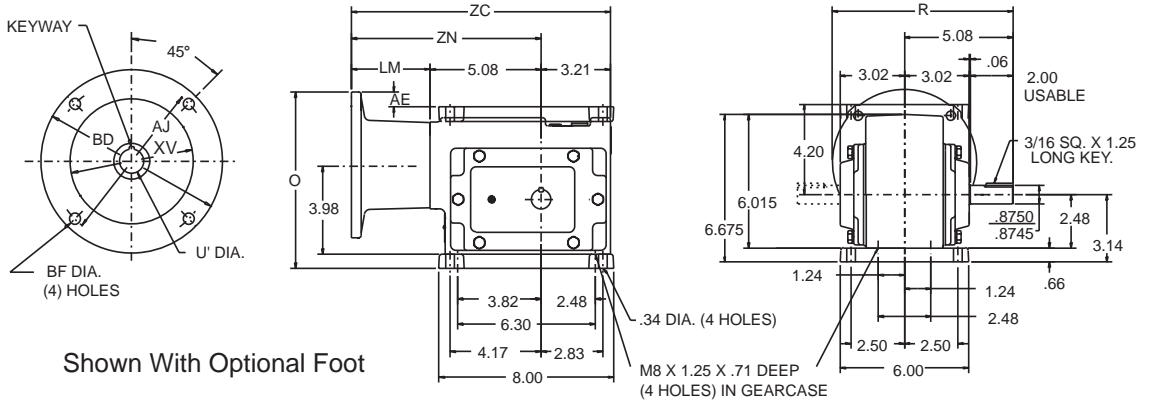
U	CUSTOMER KEYSEAT REQ'D
1-3/16"	1/4 X 1/8 X 1"
1-1/8	
1-1/16	
1	

FEATURES/BENEFITS PAGE G5-2	SPECIFICATION PAGE G5-4	NOMENCLATURE PAGE G5-5	MODIFICATION/ACCESSORIES PAGE G5-34
--------------------------------	----------------------------	---------------------------	--

DIMENSIONS/ MOUNTING POSITIONS

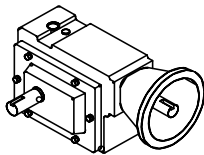


Combination TIGEAR Size C150 SOLID SHAFT

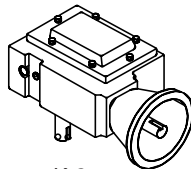


FRAME SIZE	AJ	BD	BF	U'		KEYWAY	XV (TENON)	ZC	O	LM	ZN	AE	R
				MIN.	MAX.								
56C	5.88	6.72	0.44	0.626	0.627	3/16 X 3/32	4.501/4.503	11.86	8.00	3.60	8.68	0.66	8.44
140TC	5.88	6.72	0.44	0.876	0.877	3/16 X 3/32	4.501/4.503	11.86	8.00	3.60	8.68	0.66	8.44

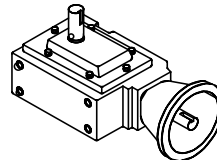
NOTE: All units include drilled and tapped mounting holes on the top and bottom of the reducer. If optional bolt-on foot is required, order part number 6011246.



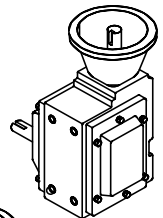
K-1



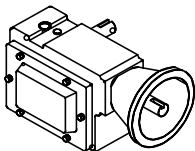
K-2



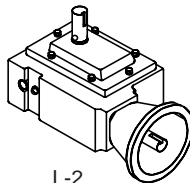
K-4



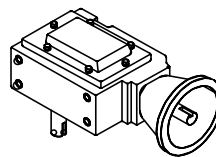
K-5



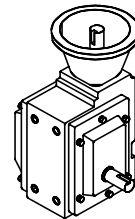
L-1



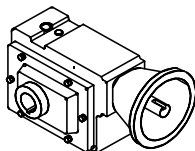
L-2



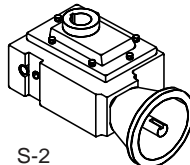
L-4



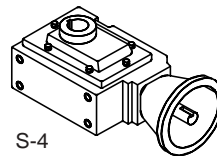
L-5



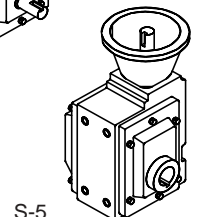
S-1



S-2



S-4



S-5

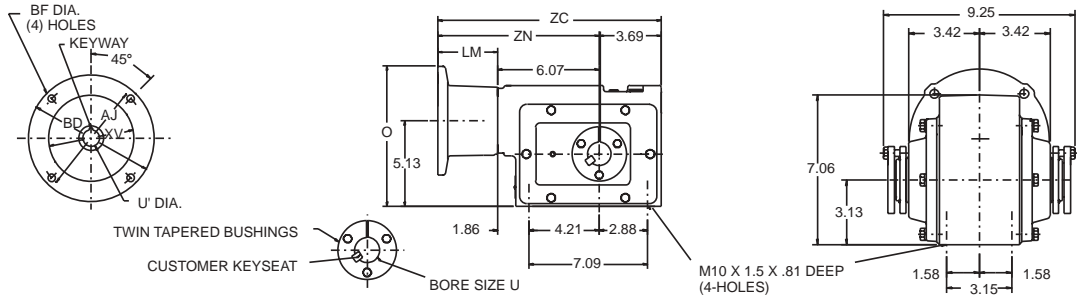
For Additional Mounting Positions, Refer To Pages G5-32 and G5-33

FEATURES/BENEFITS PAGE G5-2	SPECIFICATION PAGE G5-4	NOMENCLATURE PAGE G5-5	MODIFICATION/ACCESSORIES PAGE G5-34
--------------------------------	----------------------------	---------------------------	--

DIMENSIONS



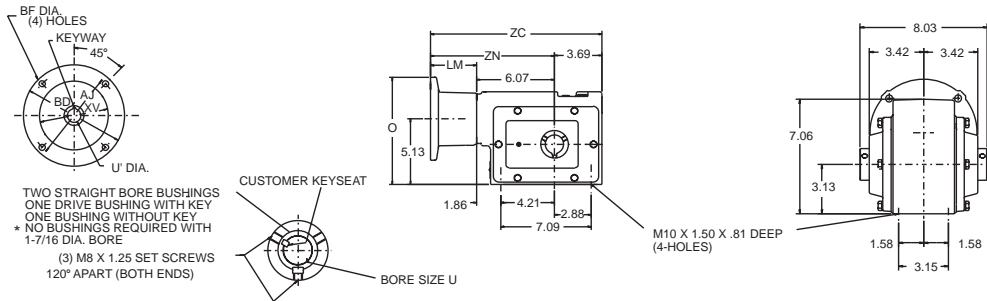
Combination TIGEAR Size C200 HOLLOW SHAFT - TAPERED BUSHING



FRAME SIZE	AJ	BD	BF	U'		KEYWAY	XV (TENON)	ZC	O	LM	ZN
				MIN.	MAX.						
56C	5.88	6.72	0.44	0.626	0.627	3/16 X 3/32	4.501/4.503	13.37	8.38	3.60	9.67
140TC	5.88	6.72	0.44	0.876	0.877	3/16 X 3/32	4.501/4.503	13.37	8.38	3.60	9.67
180TC	7.25	9.00	0.53	1.126	1.127	1/4 X 1/8	8.500/8.502	14.41	9.66	4.64	10.71

U	CUSTOMER KEYSEAT REQ'D
1-7/16	3/8 X 3/16 X 8.82
1-3/8	1/4 X 1/8 X 8.82
1-5/16	
1-1/4	
1-3/16	
1-1/8	
1-1/16	10MM X 5MM X 225MM
1	
35MM	
32MM	
30MM	8MM X 4MM X 225MM
25MM	

HOLLOW SHAFT - STRAIGHT BORE



FRAME SIZE	AJ	BD	BF	U'		KEYWAY	XV (TENON)	ZC	O	LM	ZN
				MIN.	MAX.						
56C	5.88	6.72	0.44	0.626	0.627	3/16X3/32	4.501/4.503	13.37	8.38	3.60	9.67
140TC	5.88	6.72	0.44	0.876	0.877	3/16 X 3/32	4.501/4.503	13.37	8.38	3.60	9.67
180TC	7.25	9.00	0.53	1.126	1.127	1/4X 1/8	8.500/8.502	14.41	9.66	4.64	10.71

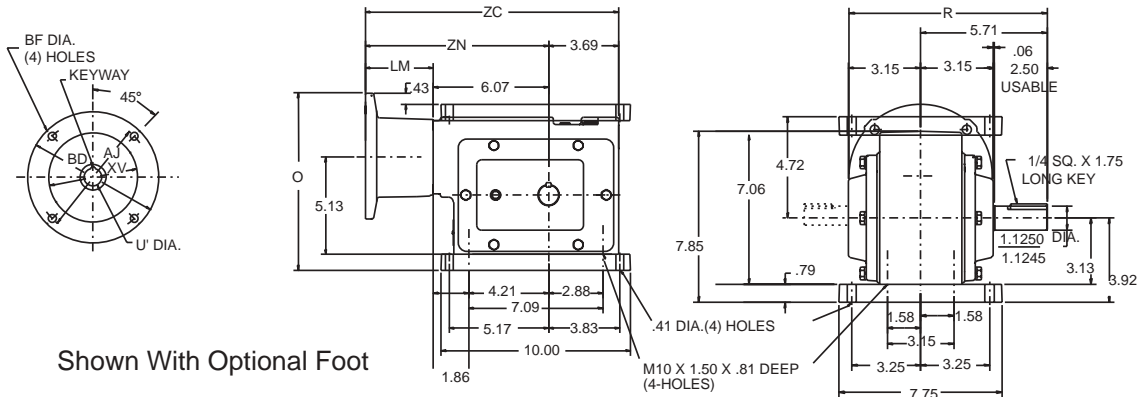
U	CUSTOMER KEYSEAT REQ'D
1-7/16*	3/8 X 3/16 X 2
1-5/16	5/16 X 5/32 X 2
1-1/4	1/4X1/8X2
1-3/16	
1-1/8	1/4 X 1/8 X 1-3/4
1-1/16	
1	

FEATURES/BENEFITS PAGE G5-2	SPECIFICATION PAGE G5-4	NOMENCLATURE PAGE G5-5	MODIFICATION/ACCESSORIES PAGE G5-34
--------------------------------	----------------------------	---------------------------	--

DIMENSIONS/ MOUNTING POSITIONS



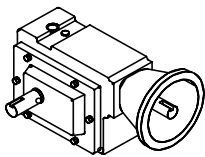
Combination TIGEAR Size C200 SOLID SHAFT



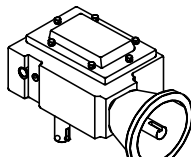
Shown With Optional Foot

FRAME SIZE	AJ	BD	BF	U'		KEYWAY	XV (TENON)	ZC	O	R	LM	ZN
				MIN.	MAX.							
56C	5.88	6.72	0.44	0.626	0.627	3/16 X 3/32	4.501/4.503	13.37	9.17	8.96	3.60	9.67
140TC	5.88	6.72	0.44	0.876	0.877	3/16 X 3/32	4.501/4.503	13.37	9.17	8.96	3.60	9.67
180TC	7.25	9.00	0.53	1.126	1.127	1/4 X 1/8	8.500/8.502	14.41	10.45	10.21	4.64	10.71

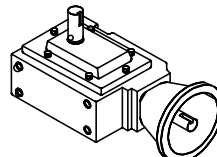
NOTE: All units include drilled and tapped mounting holes on the top and bottom of the reducer. If optional bolt-on foot is required, order part number 6011253.



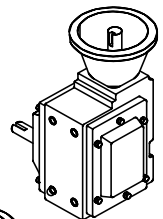
K-1



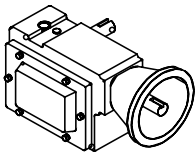
K-2



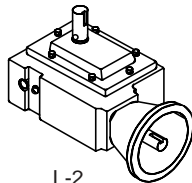
K-4



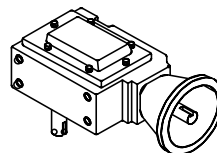
K-5



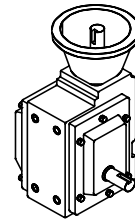
L-1



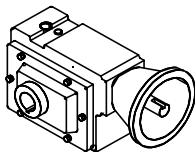
L-2



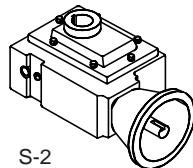
L-4



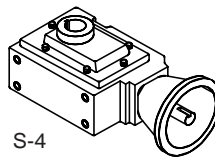
L-5



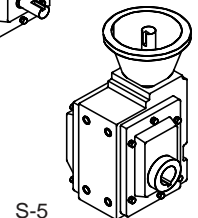
S-1



S-2



S-4



S-5

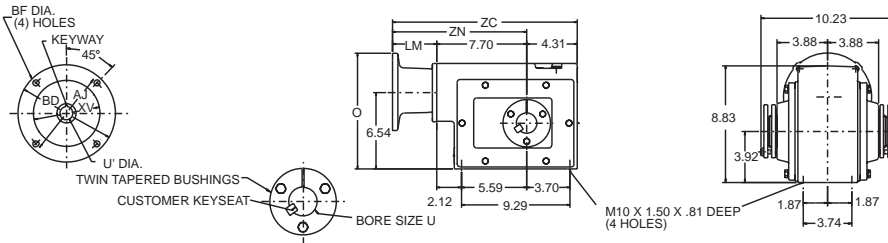
For Additional Mounting Positions, Refer To Pages G5-32 and G5-33

FEATURES/BENEFITS PAGE G5-2	SPECIFICATION PAGE G5-4	NOMENCLATURE PAGE G5-5	MODIFICATION/ACCESSORIES PAGE G5-34
--------------------------------	----------------------------	---------------------------	--

DIMENSIONS



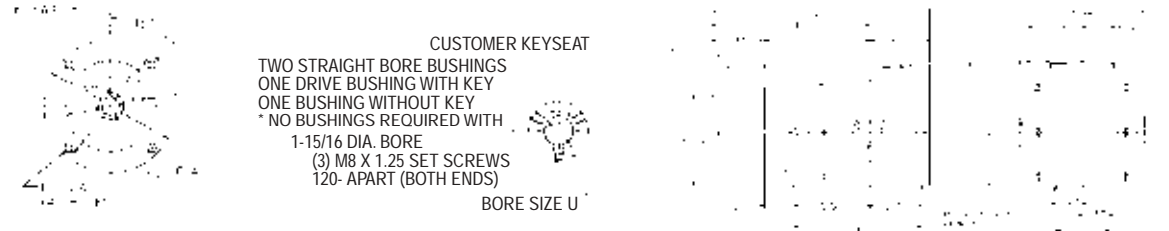
Combination TIGEAR Size C262 HOLLOW SHAFT - TAPERED BUSHING



FRAME SIZE	AJ	BD	BF	U'		KEYWAY	XV (TENON)	ZC	O	LM	ZN
				MIN.	MAX.						
56C	5.88	6.72	0.44	0.626	0.627	3/16 X 3/32	4.501/4.503	15.81	9.90	3.80	11.50
140TC	5.88	6.72	0.44	0.876	0.877	3/16 X 3/32	4.501/4.503	15.81	9.90	3.80	11.50
180TC	7.25	9.00	0.53	1.126	1.127	1/4 X 1/8	8.500/8.502	16.81	11.04	4.80	12.50

U	CUSTOMER KEYSEAT REQ'D
1-15/16	1/2 X 1/4 X 9.81 MAX
1-3/4	3/8 X 3/16 X 9.81
1-11/16	
1-5/8	
1-1/2	
1-7/16	5/16 X 5/32 X 9.81
1-3/8	
1-5/16	
1-1/4	1/4 X 1/8 X 9.81
1-3/16	
1-1/8	12MM X 5MM X 250MM
45MM	
42MM	
40MM	
38MM	10MM X 5MM X 250MM
35MM	
32MM	

HOLLOW SHAFT - STRAIGHT BORE



FRAME SIZE	AJ	BD	BF	U'		KEYWAY	XV (TENON)	ZC	O	LM	ZN
				MIN.	MAX.						
56C	5.88	6.72	0.44	0.626	0.627	3/16 X 3/32	4.501/4.503	15.81	9.90	3.80	11.50
140TC	5.88	6.72	0.44	0.876	0.877	3/16 X 3/32	4.501/4.503	15.81	9.90	3.80	11.50
180TC	7.25	9.00	0.53	1.126	1.127	1/4 X 1/8	8.500/8.502	16.81	11.04	4.80	12.50

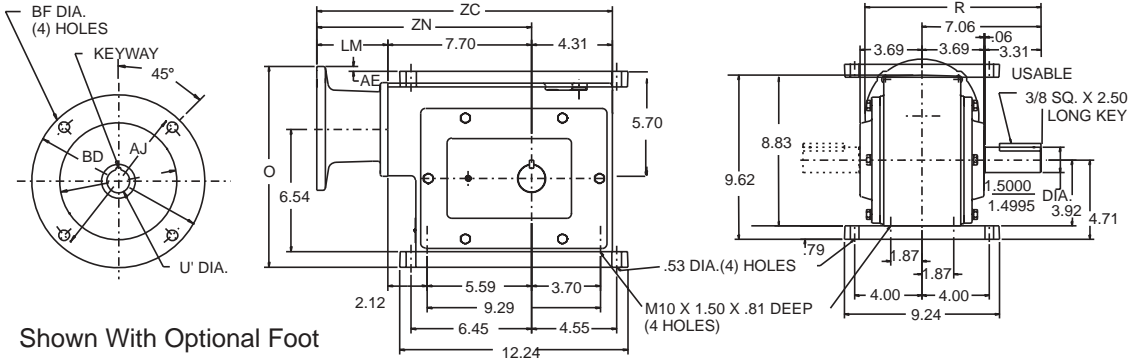
U	CUSTOMER KEYSEAT REQ'D
1-15/16*	1/2 X 1/4 X 2-1/2
1-3/4	3/8 X 3/16 X 2-7/8
1-11/16	
1-5/8	
1-1/2	
1-7/16	3/8 X 3/16 X 2-1/2
1-3/8	
1-5/16	
1-1/4	5/16 X 5/32 X 2
1-3/16	
	1/4 X 1/8 X 2

FEATURES/BENEFITS PAGE G5-2	SPECIFICATION PAGE G5-4	NOMENCLATURE PAGE G5-5	MODIFICATION/ACCESSORIES PAGE G5-34
--------------------------------	----------------------------	---------------------------	--

DIMENSIONS/ MOUNTING POSITIONS



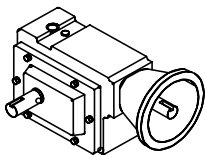
Combination TIGEAR Size C262 SOLID SHAFT



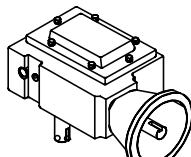
Shown With Optional Foot

FRAME SIZE	AJ	BD	BF	U'		KEYWAY	XV (TENON)	ZC	O	R	LM	ZN	AE
				MIN.	MAX.								
56C	5.88	6.72	0.44	0.626	0.627	3/16 X 3/32	4.501/4.503	15.81	10.69	10.63	3.80	11.50	0.28
140TC	5.88	6.72	0.44	0.876	0.877	3/16 X 3/32	4.501/4.503	15.81	10.69	10.63	3.80	11.50	0.28
180TC	7.25	9.00	0.53	1.126	1.127	1/4 X 1/8	8.500/8.502	16.81	11.83	11.78	4.80	12.50	1.42

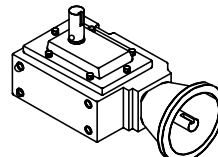
NOTE: All units include drilled and tapped mounting holes on the bottom of the reducer. If optional bolt-on foot is required, order part number 6011260.



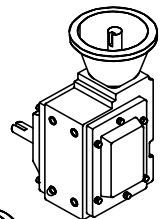
K-1



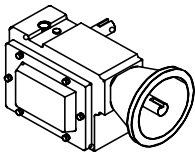
K-2



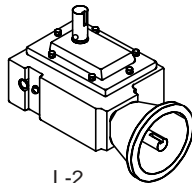
K-4



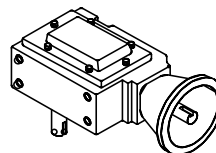
K-5



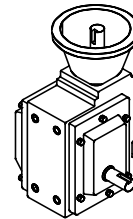
L-1



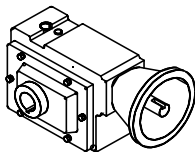
L-2



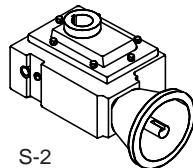
L-4



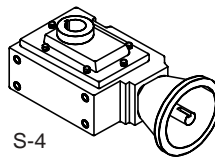
L-5



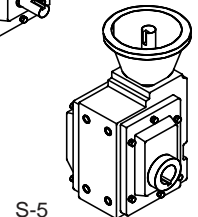
S-1



S-2



S-4



S-5

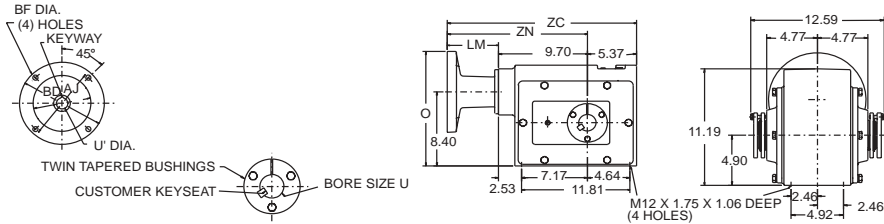
For Additional Mounting Positions, Refer To Pages G5-32 and G5-33

FEATURES/BENEFITS PAGE G5-2	SPECIFICATION PAGE G5-4	NOMENCLATURE PAGE G5-5	MODIFICATION/ACCESSORIES PAGE G5-34
--------------------------------	----------------------------	---------------------------	--

DIMENSIONS



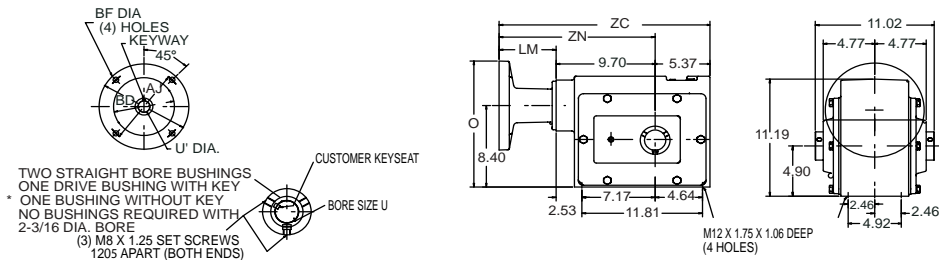
Combination TIGEAR Size C350 HOLLOW SHAFT - TAPERED BUSHING



FRAME SIZE	AJ	BD	BF	U'		KEYWAY	XV (TENON)	ZC	O	LM	ZN
				MIN.	MAX.						
56C	5.88	6.72	0.44	0.626	0.627	3/16 X 3/32	4.501/4.503	18.87	11.76	3.80	13.50
140TC	5.88	6.72	0.44	0.876	0.877	3/16 X 3/32	4.501/4.503	18.87	11.76	3.80	13.50
180TC	7.25	9.00	0.53	1.126	1.127	1/4 X 1/8	8.500/8.502	19.87	12.90	4.80	14.50
210TC	7.25	9.00	0.53	1.376	1.377	5/16 X 5/32	8.500/8.502	20.37	12.90	5.30	15.00

U	CUSTOMER KEYSEAT REQ'D
2-3/16 MAX 2 1-15/16 1-7/8	1/2 X 1/4 X 12.09
1-3/4 1-11/16 1-5/8 1-1/2 1-7/16	3/8 X 3/16 X 12.09
1-3/8 1-5/16	5/16 X 5/32 X 9.81
55MM	16MM X 6MM X 307MM
50MM 45MM 42MM	14MM X 6MM X 307MM
40MM 38MM	12MM X 5MM X 307MM

HOLLOW SHAFT - STRAIGHT BORE



FRAME SIZE	AJ	BD	BF	U'		KEYWAY	XV (TENON)	ZC	O	LM	ZN
				MIN.	MAX.						
56C	5.88	6.72	0.44	0.626	0.627	3/16 X 3/32	4.501/4.503	18.87	11.76	3.80	13.50
140TC	5.88	6.72	0.44	0.876	0.877	3/16 X 3/32	4.501/4.503	18.87	11.76	3.80	13.50
180TC	7.25	9.00	0.53	1.126	1.127	1/4 X 1/8	8.500/8.502	19.87	12.90	4.80	14.50
210TC	7.25	9.00	0.53	1.376	1.377	5/16 X 5/32	8.500/8.502	20.37	12.90	5.30	15.00

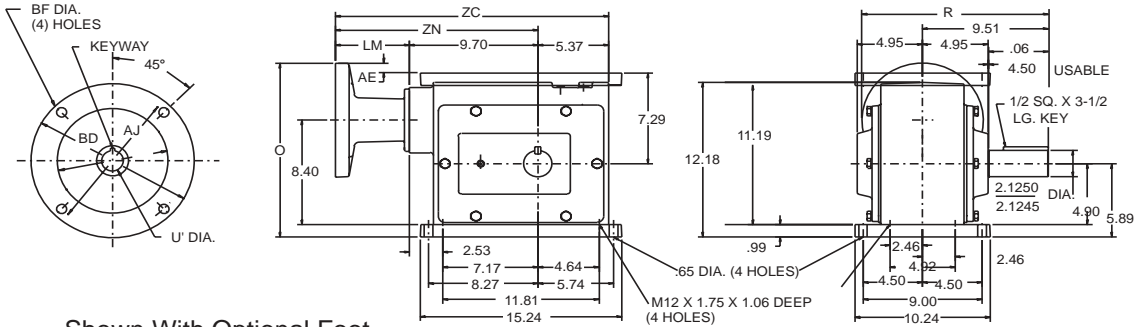
U	CUSTOMER KEYSEAT REQ'D
2-3/16* 2 1-15/16 1-7/8	1/2 X 1/4 X 3-5/8
1-3/4 1-11/16 1-5/8 1-1/2 1-7/16	3/8 X 3/16 X 3-1/4
1-3/8 1-5/16	3/8 X 3/16 X 2-1/4
5/16 X 5/32 X 2-1/4	

FEATURES/BENEFITS PAGE G5-2	SPECIFICATION PAGE G5-4	NOMENCLATURE PAGE G5-5	MODIFICATION/ACCESSORIES PAGE G5-34
--------------------------------	----------------------------	---------------------------	--

DIMENSIONS/ MOUNTING POSITIONS



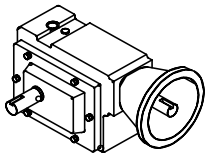
Combination TIGEAR Size C350



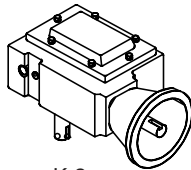
Shown With Optional Foot

FRAME SIZE	AJ	BD	BF	U'		KEYWAY	XV (TENON)	ZC	O	R	LM	ZN	AE
				MIN.	MAX.								
56C	5.88	6.72	0.44	0.626	0.627	3/16 X 3/32	4.501/4.503	18.87	12.75	12.97	3.80	13.50	-0.43
140TC	5.88	6.72	0.44	0.876	0.877	3/16 X 3/32	4.501/4.503	18.87	12.75	12.97	3.80	13.50	-0.43
180TC	7.25	9.00	0.53	1.126	1.127	1/4 X 1/8	8.500/8.502	19.87	13.89	14.18	4.80	14.50	0.71
210TC	7.25	9.00	0.53	1.376	1.377	5/16 X 5/32	8.500/8.502	20.37	13.89	14.18	5.30	15.00	0.71

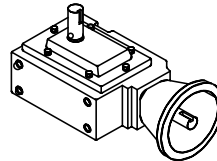
NOTE: All units include drilled and tapped mounting holes on the top and bottom of the reducer. If optional bolt-on foot is required, order part number 6011277.



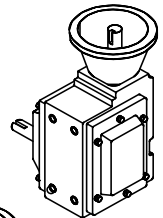
K-1



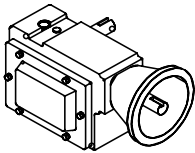
K-2



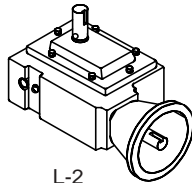
K-4



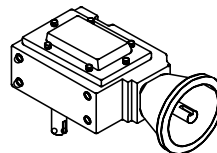
K-5



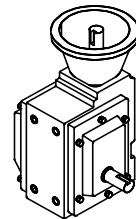
L-1



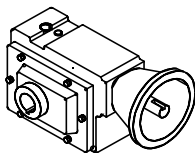
L-2



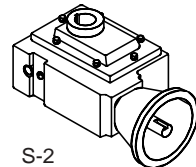
L-4



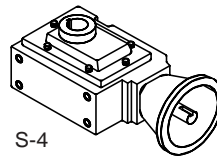
L-5



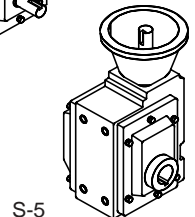
S-1



S-2



S-4



S-5

For Additional Mounting Positions, Refer To Pages G5-32 and G5-33

FEATURES/BENEFITS PAGE G5-2	SPECIFICATION PAGE G5-4	NOMENCLATURE PAGE G5-5	MODIFICATION/ACCESSORIES PAGE G5-34
--------------------------------	----------------------------	---------------------------	--