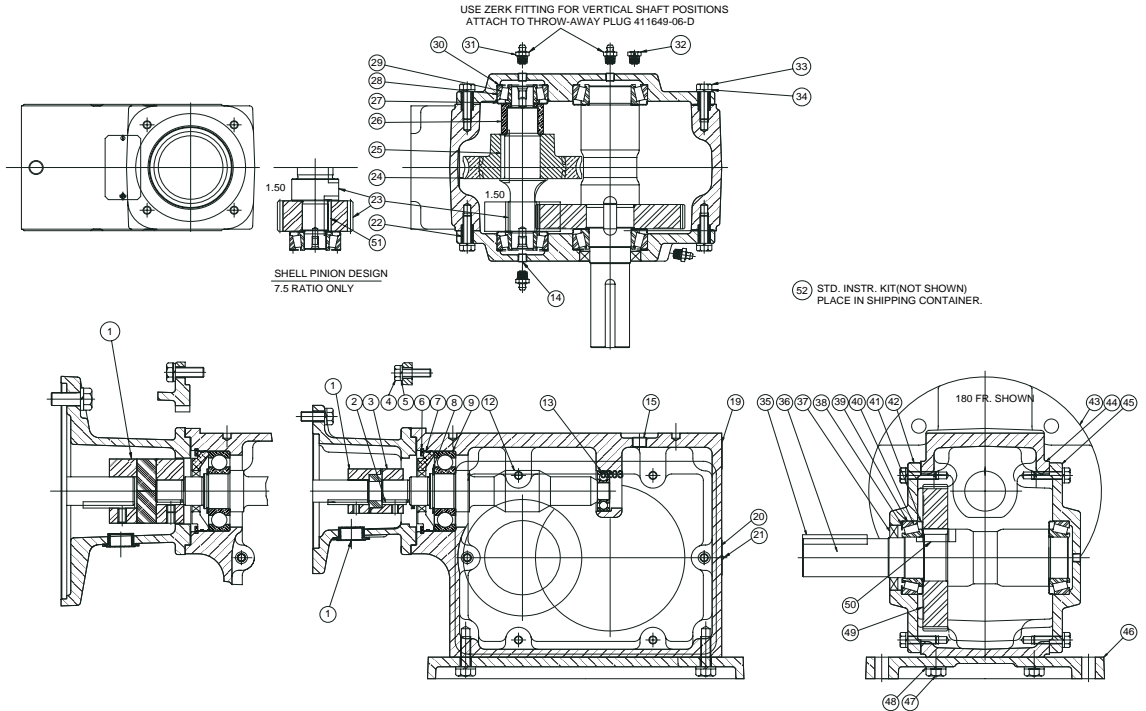




Combination TIGEAR SOLID SHAFT - SIZES C150-C350



PART NUMBER LISTING						
ITEM	DESCRIPTION	QTY	C150	C200	C262	C350
1	CPLNG HUB (56C MTR)	0 - 1	278900	278900	278900	278900
	CPLNG HUB (140TC MTR)	0 - 1	278901	278901	278901	278901
	CPLNG HUB (180TC)	0 - 1	-----	60222209W	278907	278907
	CPLNG HUB (210TC)	0 - 1	-----	-----	-----	60222209B
	CPLNG ELEMENT 56/140	0 - 1	278911	278911	278911	278911
	CPLNG ELEMENT 180TC	0 - 1	-----	60222220A	60222211A	60222211A
2	KEY, INPUT SHAFT	1	276138	276138	276140	276140
3	CPLNG HUB, REDUCER 56/140	0 - 1	278900	276143	278901	278901
	CPLNG HUB, REDUCER 180	0 - 1	-----	276145	275806	275806
	CPLNG HUB, REDUCER 210	0 - 1	-----	-----	-----	60222209C
4	HEX HEAD SCREW	4	053202	053202	051929	051929
5	LOCKWASHER	4	50253	50253	050250	050250
6	CIRCLIP	1	278702	278702	278716	278146
*7	OIL SEAL ASSM	0 - 1	41162024A	41162024B	41162024C	41162024D
8	CIRCLIP	1	278710	278712	278715	278718
*9	BEARING, SEALED (1)	1	07914703E	07914703G	07914703N	07914703AA
12	WORM SHAFT	1	SEE GEAR CHART			
*13	BEARING	1	278883	07914702D	07914702K	07914702X
14	PIPE PLUG	1 - 3	41164738B	41164738B	41164738B	41164738B
15	PIPE PLUG	1	41164738A	41164738A	41164738A	41164738A

FEATURES/BENEFITS PAGE G5-2	SPECIFICATION PAGE G5-4	NOMENCLATURE PAGE G5-5	MODIFICATION/ACCESSORIES PAGE G5-34
--------------------------------	----------------------------	---------------------------	--

RENEWAL PARTS



Combination TIGEAR SOLID SHAFT - SIZES C150-C350

PART NUMBER LISTING						
ITEM	DESCRIPTION	QTY	C150	C200	C262	C350
19	WARNING PLATE	1	60241524C	60241524C	60241524C	60241524C
20	NAMEPLATE	1	60200503C	60200503C	60200503C	60200503C
21	DRIVE SCREW	2	41163603B	41163603B	41163603B	41163603B
22	DOWEL PIN SLEEVE	4	41171506A	41171506A	41171506A	41171506B
23	INT PINION SHAFT	1	SEE GEAR CHART			
24	WORM GEAR	1	SEE GEAR CHART			
25	KEY	1	41168812V	41168812K	055610	050999
26	SPACER	1	41162210AA	41162210AB	41162210AE	41162210AD
*27	GREASE RETAINER	2	41162401A	41162401D	41162401B	41162401W
*28/29	BEARING ASSEMBLY	2	41162601D	41162601E	41162601B	41162601AC
30	SHIM	1	41164246D	41164250Z	41164246F	41164250AB
31	ZERK FITTING	0 - 2	07901913AW	07901938AW	07901913AW	07901938AW
32	PLUG, THROW-AWAY	0 - 2	41164906D	41164906D	41164906D	41164906D
33	HEX HEAD SCREW (4)	12	60245207H	60245207H	60245207H	60245207K
34	LOCKWASHER (4)	12	050253	050253	050253	304603
35	KEY	1	055592	055025	055060	41168812D
36	OUTPUT SHAFT	1	60242112A	60242113A	60242114A	60242115A
37	SEAL, OUTPUT	1	41162701FR	41162701FX	41162701FS	41162701FT
38	SHIM	1	41164250AC	41164246B	41164246AB	41164246H
*39/40	BEARING ASSEMBLY	2	41162601C	41162601A	41162601R	41162601AB
41	GREASE RETAINER	2	41162401C	41162401E	41162401R	41162401X
42	BEARING HSG, OPEN (3)*	1	07920624A	07920618B	08692302A	08692308A
43	"C" FACE ADPT 56/140	0 - 1	278574	278574	278476	278476
	"C" FACE ADPT 180 (2)	0 - 1	-----	07906722AB	278478	278478
	"C" FACE ADPT 210 (5)	0 - 1	-----	-----	-----	07906722AD
44	GEARCASE	1	08693202B	08693204B	08693206B	08693208B
45	BEARING HSG, CLOSED	1	07920628A	07920622B	08692306A	08693312A
46	BOLT ON FOOT	0 - 1	07914022A	07914020A	07914024A	07914026A
47	HEX HEAD SCREW	0 - 4	60245207A	60245207J	60245207J	60245207L
48	LOCKWASHER	0 - 4	050253	050684	304603	050469
49	HELICAL GEAR	1	SEE GEAR CHART			
50	GEAR KEY	1	41168812E	055087	055154	41168812AE
51	KEY, SHELL PINION RATIO 6.2 & 7.5	0 - 1	-----	-----		

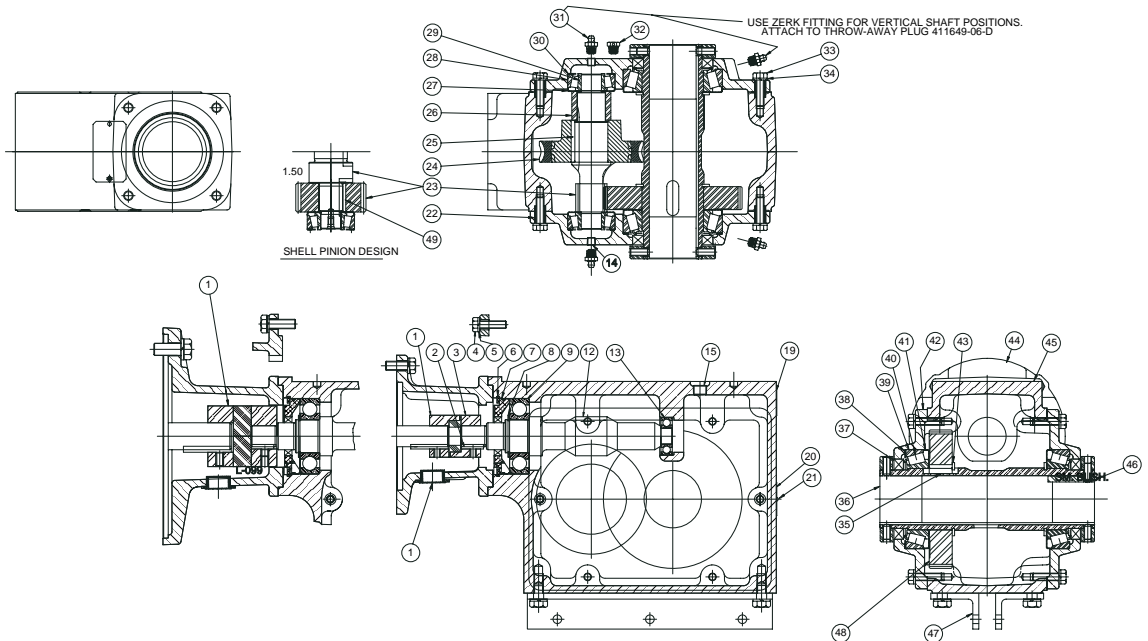
*RECOMMENDED SPARE PARTS FOR MINIMUM PROTECTION

- (1) FOR A-5 MOUNTING ONLY USE SEALED BEARING 07914703F FOR C150, 07914703DD FOR C200, 07914703R FOR C262, 07914703BV FOR C350.
- (2) BOLT ON PLATE ADAPTOR ON SIZE C200. MUST ALSO USE 56/140 ADAPTOR.
- (3) SIZE C200 OUTPUT SHAFT UP USES 07920618C.
- (4) SIZE C350 USES 16 EACH.
- (5) ADD TO 180 C-ADPT FOR 210 MOTOR USE.



Combination TIGEAR STRAIGHT BORE - SIZES C150TS-C350S

(50) STD. INSTR. KIT(NOT SHOWN).
PLACE IN SHIPPING CONTAINER.



PART NUMBER LISTING						
ITEM	DESCRIPTION	QTY	C150	C200	C262	C350
1	CPLNG HUB (56C MTR)	0-1	278900	278900	278900	278900
	CPLNG HUB (140TC MTR)	0-1	278901	278901	278901	278901
	CPLNG HUB (180TC MOTOR)	0-1	----	60222209W	278907	278907
	CPLNG HUB (210TC)	0-1	----	----	----	60222209B
	CPLNG ELEMENT 56/140	0-1	278911	278911	278911	278911
	CPLNG ELEMENT 180/210TC	0-1	----	60222220A	60222211A	60222211A
2	KEY, INPUT SHAFT	1	276138	276138	276140	276140
3	CPLNG HUB, REDUCER W/ 56/140	0-1	278900	276143	278901	278901
	CPLNG HUB, REDUCER W/ 180TC	0-1	----	276145	275806	275806
	CPLNG HUB, REDUCER W/210TC	0-1	----	----	----	60222209C
4	HEX HEAD SCREW	4	053202	053202	051929	051929
5	LOCKWASHER	4	050253	050253	050250	050250
6	CIRCLIP	1	278702	278702	278716	276146
*7	OIL SEAL ASSM	1	41162024A	41162024B	41162024C	41162024D
8	CIRCLIP	1	278710	278712	278715	278718
*9	"BEARING, SEALED (1)"	1	07914703E	07914703G	07914703N	07914703AA
12	WORM SHAFT	1	SEE GEAR CHART			
*13	BEARING	1	278883	07914702D	07914702K	07914702X
14	PIPE PLUG	1-3	41164738B	41164738B	41164738B	41164738B
15	PIPE PLUG	1	41164738A	41164738A	41164738A	41164738A

FEATURES/BENEFITS PAGE G5-2	SPECIFICATION PAGE G5-4	NOMENCLATURE PAGE G5-5	MODIFICATION/ACCESSORIES PAGE G5-34
--------------------------------	----------------------------	---------------------------	--

RENEWAL PARTS



Combination TIGEAR STRAIGHT BORE - SIZES C150TS-C350S

PART NUMBER LISTING						
ITEM	DESCRIPTION	QTY	C150	C200	C262	C350
19	WARNING PLATE	1	60241524C	60241524C	60241524C	60241524C
20	NAMEPLATE	1	60200503C	60200503C	60200503C	60200503C
21	NAMEPLATE PINS	2	41163603B	41163603B	41163603B	41163603B
22	SLEEVE DOWEL PIN	4	41171506A	41171506A	41171506A	41171506B
23	INT PINION SHAFT	1	SEE GEAR CHART			
24	WORM GEAR	1				
25	KEY	1	41168812V	41168812K	55610	50999
26	SPACER	1	41162210AA	41162210AB	41162210AE	41162210AD
27	GREASE RETAINER	2	41162401A	41162401D	41162401B	41162401W
*28/29	BEARING ASSEMBLY	2	41162601D	41162601E	41162601B	41162601AC
30	SHIM	1	41164246D	41164250Z	41164246F	41164250AB
31	ZERK FITTING	0-2	07901913AW	07901938AW	07901938AW	07901938AW
32	"PLUG, THROW-AWAY"	0-2	41164906D	41164906D	41164906D	41164906D
33	HEX HEAD SCREW (2)	12	60245207H	60245207H	60245207H	60245207K
34	LOCKWASHER (2)	12	050253	050253	050253	304603
35	KEY	1	41168812AA	41168812AB	41168812AC	41168812AD
36	OUTPUT SHAFT	1	07920702B	07920703B	07920704B	07920705B
*37	OUTPUT SEAL	2	41162701FS	41162701FT	41162701FV	41162701FW
38	SHIM	1	41164250AG	41164250AH	41164246H	41164250AK
*39/40	BEARING ASSEMBLY	2	41162601GP	41162601BR	41162601GR	41162601GS
41	GREASE RETAINER	1-2	41162401AB	41162401M	41162401AC	41162401AD
	GREASE RETAINER (6.2 & 7.5 RATIO)	0-1	41162336A	41162401AG	41162336B	41162336C
42	BEARING HOUSING, OPEN	2	07920626A	07920620B	08692304A	08693310A
43	RETAINING RING	2	41163708A	150182	41163702BH	41163708D
44	C-FACE ADAPTOR (56/140)	0-1	278574	278574	278476	278476
	C-FACE ADAPTOR (180)	0-1	-----	07906722AB	278478	278478
	ADAPTOR PLATE (210TC) (3)	0-1	-----	-----	-----	07906722AD
45	GEARCASE	1	08693202B	08693204B	08693206B	08693208B
46	STRAIGHT BORE BUSHING	2	SEE ACCESSORIES			
47	TORQUE ARM BRKT ASSM	0-1	60232807J	60232807C	60232807L	60232807R
47	TORQUE ARM ASSEMBLY	0-1	60232807H	60232807S	60232807M	60232807P
48	HELICAL GEAR	1	SEE GEAR CHART			
49	KEY, SHELL PINION RATIO 6.2 & 7.5	0-1	-----	-----	050994	055089

*RECOMMENDED SPARE PARTS FOR MINIMUM PROTECTION

(1) FOR A-5 MOUNTING ONLY USE SEALED BEARING 07914703F FOR C150, USE 07914703DD FOR C200, USE 07914703R FOR C262, USE 07914703BV FOR C350.

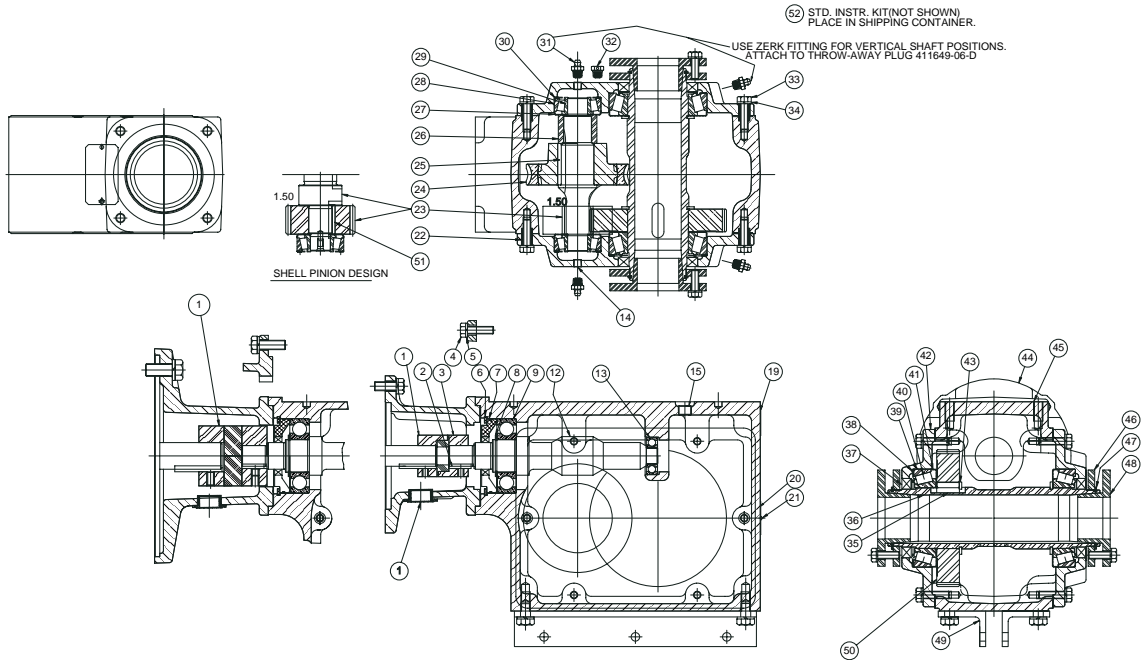
(2) SIZE C350 USE QTY 16.

(3) TO CONVERT UNIT TO 210TC INPUT THE 180TC ADAPTOR MUST ALSO BE USED.

RENEWAL PARTS



Combination TIGEAR TWIN TAPER BUSHING - SIZES C150T - C350T



PART NUMBER LISTING						
ITEM	DESCRIPTION	QTY	C150	C200	C262	C350
1	CPLNG HUB (56C MTR)	0-1	278900	278900	278900	278900
	CPLNG HUB (140TC MTR)	0-1	278901	278901	278901	278901
	CPLNG HUB (180TC MOTOR)	0-1	----	60222209W	278907	278907
	CPLNG HUB (210TC)	0-1	----	----	----	60222209B
	CPLNG ELEMENT 56/140	0-1	278911	278911	278911	278911
	CPLNG ELEMENT 180/210TC	0-1	----	60222220A	60222211A	60222211A
2	KEY, INPUT SHAFT	1	276138	276138	276140	276140
3	CPLNG HUB, REDUCER W/ 56/140	0-1	278900	276143	278901	278901
	CPLNG HUB, REDUCER W/ 180TC	0-1	----	276145	275806	275806
	CPLNG HUB, REDUCER W/210TC	0-1	----	----	----	60222209C
4	HEX HEAD SCREW	4	053202	053202	051929	051929
5	LOCKWASHER	4	050253	050253	050250	050250
6	CIRCLIP	1	278702	278702	278716	278146
*7	OIL SEAL ASSM	1	41162024A	41162024B	41162024C	41162024D
8	CIRCLIP	1	278710	278712	278715	278718
*9	BEARING, SEALED (1)	1	07914703E	07914703G	07914703N	07914703AA
12	WORM SHAFT	1	SEE GEAR CHART			
*13	BEARING	1	278883	07914702D	07914702K	07914702X
14	PIPE PLUG	1-3	41164738B	41164738B	41164738B	41164738B
15	PIPE PLUG	1	41164738A	41164738A	41164738A	41164738A

FEATURES/BENEFITS PAGE G5-2	SPECIFICATION PAGE G5-4	NOMENCLATURE PAGE G5-5	MODIFICATION/ACCESSORIES PAGE G5-34
--------------------------------	----------------------------	---------------------------	--

RENEWAL PARTS



Combination TIGEAR TWIN TAPER BUSHING - SIZES C150T - C350T

PART NUMBER LISTING						
ITEM	DESCRIPTION	QTY	C150	C200	C262	C350
19	WARNING PLATE	1	60241524C	60241524C	60241524C	60241524C
20	NAMEPLATE	1	60200503C	60200503C	60200503C	60200503C
21	NAMEPLATE PINS	2	41163603B	41163603B	41163603B	41163603B
22	SLEEVE DOWEL PIN	4	41171506A	41171506A	41171506A	41171506B
23	INT PINION SHAFT	1	SEE GEAR CHART			
24	WORM GEAR	1				
25	KEY	1	41168812V	41168812K	55610	50999
26	SPACER	1	41162210AA	41162210AB	41162210AE	41162210AD
27	GREASE RETAINER	2	41162401A	41162401D	41162401B	41162401W
*28/29	BEARING ASSEMBLY	2	41162601D	41162601E	41162601B	41162601AC
30	SHIM	1	41164246D	41164250Z	41164246F	41164250AB
31	ZERK FITTING	0-2	07901913AW	07901938AW	07901938AW	07901938AW
32	PLUG, THROW-AWAY	0-2	41164906D	41164906D	41164906D	41164906D
33	HEX HEAD SCREW (2)	12	60245207H	60245207H	60245207H	60245207K
34	LOCKWASHER (2)	12	050253	050253	050253	304603
35	KEY	1	41168812AA	41168812AB	41168812AC	41168812AD
36	OUTPUT SHAFT	1	07920702C	07920703C	07920704C	07920705C
*37	OUTPUT SEAL	2	41162701FS	41162701FT	41162701FV	41162701FW
38	SHIM	1	41164250AG	41164250AH	41164246H	41164250AK
*39/40	BEARING ASSEMBLY	2	41162601GP	41162601BR	41162601GR	41162601GS
41	GREASE RETAINER	1-2	41162401AB	41162401M	41162401AC	41162401AD
	GREASE RETAINER (6.2 & 7.5 RATIO)	0-1	41162336A	41162401AG	41162336B	41162336C
42	BEARING HOUSING, OPEN	2	07920626A	07920620B	08692304A	08693310A
43	RETAINING RING	2	41163708A	150182	41163702BH	41163708D
44	C-FACE ADAPTOR (56/140)	0-1	278574	278574	278476	278476
	C-FACE ADAPTOR (180)	0-1	-----	07906722AB	278478	278478
	ADAPTOR PLATE (210TC) (3)	0-1	-----	-----	-----	07906722AD
45	GEARCASE	1	08693202B	08693204B	08693206B	08693208B
46	BACKING PLATE	2	41162518A	241383	242392	243115
47	SPIRAL LOCKRING	2	41163706F	421111	421112	41163706E
48	TWIN TAPER BUSHING KIT	1	SEE ACCESSORIES			
49	TORQUE ARM BRKT ASSM	0-1	60232807J	60232807C	60232807L	60232807R
	BRKT HARDWARE ASSM	0-1	60232807H	60232807S	60232807M	60232807P
50	HELICAL GEAR	1	SEE GEAR CHART			
51	KEY, SHELL PINION RATIO 6.2 & 7.5	1	-----	-----	050994	055089

*RECOMMENDED SPARE PARTS FOR MINIMUM PROTECTION

(1) FOR A-5 MOUNTING ONLY USE SEALED BEARING 07914703F FOR C150, USE 07914703DD FOR C200, USE 07914703R FOR C262, USE 07914703BV FOR C350.

(2) SIZE C350 USES QTY 16.

(3) TO CONVERT UNIT TO 210TC INPUT THE 180TC ADAPTOR MUST ALSO BE USED.

FEATURES/BENEFITS PAGE G5-2	SPECIFICATION PAGE G5-4	NOMENCLATURE PAGE G5-5	MODIFICATION/ACCESSORIES PAGE G5-34
--------------------------------	----------------------------	---------------------------	--



Combination TIGEAR SOLID AND HOLLOW SHAFT OUTPUT

SIZE C150

TOTAL RATIO	1st Stage		2nd Stage		
	Worm Shaft	Worm Gear	Pinion	Solid Shaft Output Gear	Hollow Shaft Output Gear
7.5	276068	60241102	07915819B	07915613B	07915613K
9.4	276068	60241102	07915819C	07915613C	07915613L
10	276068	60241102	07915819D	07915613D	07915613M
15	276068	60241102	07915819E	07915613E	07915613N
18	276068	60241102	07915819F	07915613F	07915613P
20	276068	60241102	07915819G	07915613G	07915613R
25	276068	60241102	07915819H	07915613H	07915613S
30	276069	60240821	07915819G	07915613G	07915613R
33.3	276070	60241163	07915819F	07915613F	07915613P
38	276069	60240821	07915819H	07915613H	07915613S
40	276070	60241163	07915819H	07915613H	07915613R
50	276070	60241163	07915819H	07915613H	07915613S
60	276072	60240828	07915819G	07915613G	07915613R
75	276072	60240828	07915819H	07915613H	07915613S
80	276074	60241164	07915819G	07915613G	07915613R
90	276073	60241171	07915819H	07915613H	07915613S
100	276074	60241164	07915819H	07915613H	07915613S
125	276076	60241165	07915819G	07915613G	07915613R
150	276076	60241165	07915819H	07915613H	07915613S
160	276077	60241166	07915819G	07915613G	07915613R
200	276077	60241166	07915819H	07915613H	07915613S
240	276079	60241168	07915819G	07915613G	07915613R
300	276079	60241168	07915819H	07915613H	07915613S

SIZE C200

TOTAL RATIO	1st Stage		2nd Stage		
	Worm Shaft	Worm Gear	Pinion	Solid Shaft Output Gear	Hollow Shaft Output Gear
9.42	276090	60241202	07915820C	07915614C	07915614M
10	276090	60241202	07915820D	07915614D	07915614L
15	276090	60241202	07915820E	07915614E	07915614N
16.96	276091	60241204	07915820G	07915614G	07915614M
18	276090	60241202	07915820F	07915614F	07915614P
18.85	276092	60241205	07915820C	07915614C	07915614L
20	276090	60241202	07915820G	07915614G	07915614R
25	276090	60241202	07915820H	07915614H	07915614S
30	276091	60241204	07915820G	07915614G	07915614R
38	276091	60241204	07915820H	07915614H	07915614S
40	276092	60241205	07915820G	07915614G	07915614R
50	276092	60241205	07915820H	07915614H	07915614S
60	276094	60241207	07915820G	07915614G	07915614R
75	276094	60241207	07915820H	07915614H	07915614S
80	276096	60241209	07915820G	07915614G	07915614R
90	276095	60241208	07915820H	07915614H	07915614S
100	276096	60241209	07915820H	07915614H	07915614S
125	276097	60241210	07915820H	07915614H	07915614S
150	276098	60241211	07915820H	07915614H	07915614S
160	276099	60241213	07915820G	07915614G	07915614R
200	276099	60241213	07915820H	07915614H	07915614S
240	276101	60241215	07915820G	07915614G	07915614R
300	276101	60241215	07915820H	07915614H	07915614S

SIZE C262

TOTAL RATIO	1st Stage		2nd Stage		
	Worm Shaft	Worm Gear	Pinion	Solid Shaft Output Gear	Hollow Shaft Output Gear
7.5 (1)	276102	60241302	07915821B	07915615B	07915615K
9.4	276102	60241302	07915821M	07915615C	07915615L
10	276102	60241302	07915821N	07915615D	07915615M
14.1	276103	60241304	07915821M	07915615C	07915615L
15	276102	60241302	07915821P	07915615E	07915615N
17.04	276103	60241304	07915821N	07915615D	07915615M
18	276102	60241302	07915821R	07915615F	07915615P
20	276102	60241302	07915821S	07915615G	07915615R
22.73	276104	60241305	07915821N	07915615D	07915615M
25	276102	60241302	07915821T	07915615H	07915615S
27.92	276104	60241305	07915821P	07915615E	07915615N
30	276103	60241304	07915821S	07915615G	07915615R
33.3	276104	60241305	07915821R	07915615F	07915615P
38	276103	60241304	07915821T	07915615H	07915615S
40	276104	60241305	07915821S	07915615G	07915615R
42.23	276106	60241307	07915821P	-----	07915615N
50	276104	60241305	07915821T	07915615H	07915615S
60	276106	60241307	07915821S	07915615G	07915615R
75	276106	60241307	07915821T	07915615H	07915615S
80	276109	60203712	07915821R	07915615F	07915615P
90	276111	60241311	07915821N	07915615D	07915615M
100	276110	60241311	07915821R	07915615F	07915615P
125	276110	60241311	07915821S	07915615G	07915615R
150	376110	60241311	07915821T	07915615H	07915615S
160	276111	60241313	07915821S	07915615G	07915615R
200	276111	60241313	07915821T	07915615H	07915615S
240	276113	60241315	07915821S	07915615G	07915615R
300	276113	60241315	07915821T	07915615H	07915615S

SIZE C350

TOTAL RATIO	1st Stage		2nd Stage		
	Worm Shaft	Worm Gear	Pinion	Solid Shaft Output Gear	Hollow Shaft Output Gear
6.2 (1)	276114	60207767	07915822A	07915616A	07915616J
7.5 (1)	276114	60207767	07915822B	07915616B	07915616K
9.4	276114	60207767	07915822C	07915616C	07915616L
10	276114	60207767	07915822D	07915616D	07915616M
15	276114	60207767	07915822E	07915616E	07915616N
18	276114	60207767	07915822F	07915616F	07915616P
20	276114	60207767	07915822G	07915616G	07915616R
22.61	276116	60242403	07915822D	07915616D	07915616M
25	276114	60207767	07915822H	07915616H	07915616S
30	276115	60207763	07915822G	07915616G	07915616R
33.3	276116	60242403	07915822F	07915616F	07915616P
38	276115	60207763	07915822H	07915616H	07915616S
40	276115	60242403	07915822G	07915616G	07915616R
47.12	276121	275593	07915822C	07915616C	07915616L
50	276116	60242403	07915822H	07915616H	07915616S
60	276118	60242404	07915822G	07915616G	07915616R
64.19	276117	60207708	07915822H	07915616H	07915616S
75	276118	60242404	07915822H	07915616H	07915616S
80	276120	60242405	07915822G	07915616G	07915616R
86	276121	275593	07915822F	07915616F	07915616P
100	276120	60242405	07915822H	07915616H	07915616S
125	276121	275593	07915822H	07915616H	07915616S
150	276122	275594	07915822G	07915616G	07915616R
160	276123	60242407	07915822G	07915616G	07915616R
200	276123	60242407	07915822H	07915616H	07915616S
240	276125	275595	07915822G	07915616G	07915616R
300	276125	275595	07915822H	07915616H	07915616S

(1) SHELL PINION RATIO. ALSO ORDER PINION SHAFT 07915821U AND KEY 50994.

(1) SHELL PINION RATIO. ALSO ORDER PINION SHAFT 07915821J AND KEY 55089.

FEATURES/BENEFITS PAGE G5-2	SPECIFICATION PAGE G5-4	NOMENCLATURE PAGE G5-5	MODIFICATION/ACCESSORIES PAGE G5-34
--------------------------------	----------------------------	---------------------------	--