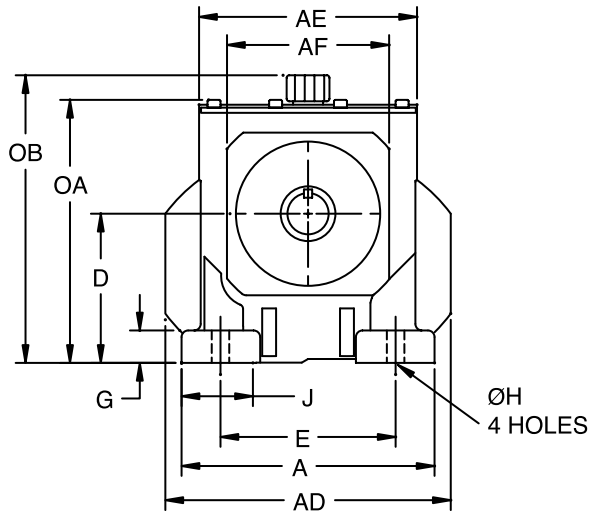
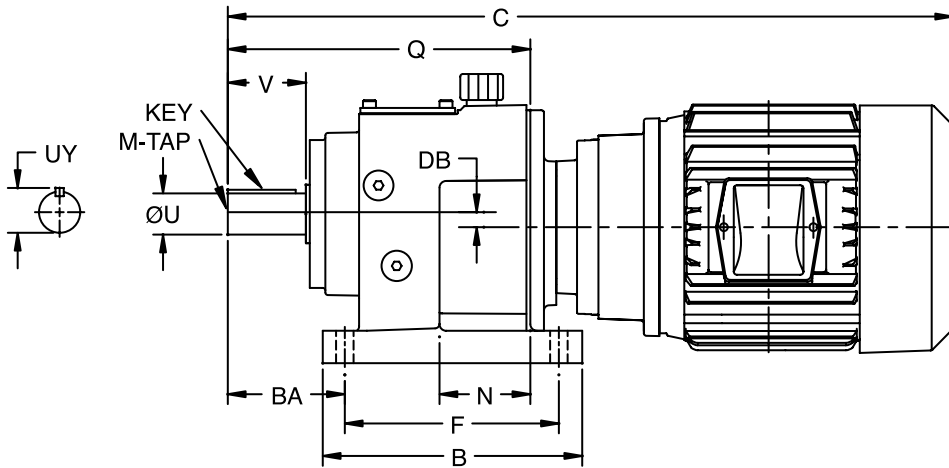


DIMENSIONS



ILH Foot Mounted, Clamp Collar C-Face Gearmotors



DIMENSIONS



ILH Foot Mounted, Clamp Collar C-Face Gearmotors

Size	Frame Size	A	B	C *	D	E	F	G	ØH	J	N	Q	V	AD	AE	AF	BA
HB38	56C	5.77	6.30	19.99	3.54	4.33	5.12	0.79	0.39	1.33	2.33	7.48	1.97	6.42	5.07	3.77	2.95
	140TC			22.72													
	180TC			24.48													
HB48	56C	7.68	7.87	21.15	4.53	5.32	6.50	0.98	0.53	2.17	2.76	9.17	2.36	8.66	6.61	4.92	3.54
	140TC			23.88													
	180TC			26.24													
HB68	56C	9.25	9.65	22.39	5.51	6.69	8.07	1.18	0.69	2.36	3.27	11.38	3.15	10.35	8.14	6.32	4.53
	140TC			25.12													
	180TC			27.49													
	210TC			32.56													
HB88	56C	11.42	12.21	24.30	7.09	8.47	10.24	1.77	0.69	2.95	4.26	14.41	3.94	13.07	10.24	7.87	5.52
	140TC			27.03													
	180TC			29.40													
	210TC			35.18													

Size	DB	OA	OB	ØU	UY	KEY	M-TAP
HB38	0	6.21	N/A	1.000	1.11	1/4 x 1/4 x 1-5/8	3/8-16 UNC x 0.87
HB48	0	7.98	8.73	1.250	1.36	1/4 x 1/4 x 2	3/8-16 UNC x 0.87
HB68	0	9.65	10.58	1.625	1.79	3/8 x 3/8 x 2-5/8	5/8-11 UNC x 1.42
HB88	0	12.21	13.17	2.125	2.35	1/2 x 1/2 x 3-1/4	3/4-10 UNC x 1.65

* Actual C dimension depends on exact motor used.

FEATURES/BENEFITS PAGE G2-2	HOW TO ORDER PAGE G2-3	SELECTION PAGE G2-4	DIMENSIONS PAGE G2-20
--------------------------------	---------------------------	------------------------	--------------------------