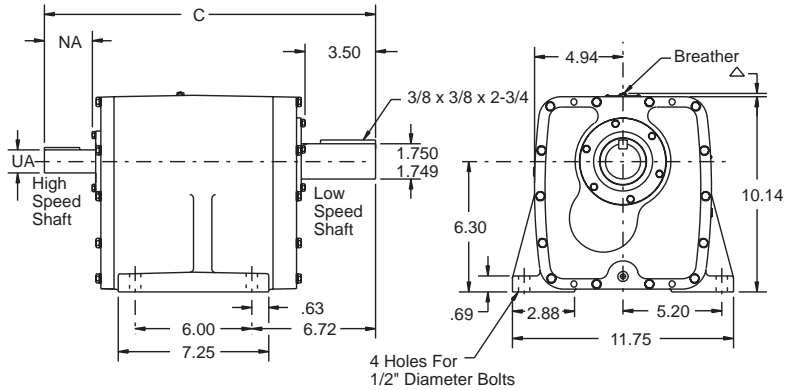




## MAXUM Concentric Reducer Size 1



△ 1-1/2" will clear breather on all size units.

Size 1	C	NA	UA	Key	Weight (lbs.)
Double Reduction	18.67	3.05	1.375/1.374	5/16 x 5/16 x 2-3/16	125
Triple Reduction	18.67	3.05	1.375/1.374	5/16 x 5/16 x 2-3/16	135

### Size 1 Part Numbers

	Nominal Ratio	Separate Reducer †
D O U B L E	DCR1- 2.25	299000
	DCR1- 2.75	299001
	DCR1- 3.37	299002
	DCR1- 4.13	299003
	DCR1- 5.06	299004
	DCR1- 6.2	299005
	DCR1- 7.59	299006
	DCR1- 9.3	299007
	DCR1- 11.9	299008
	DCR1- 14.95	299009
	DCR1- 17.09	299010
	DCR1- 20.93	299011
DCR1- 25.63	299012	
T R I P L E	TCR1- 31.39	299013
	TCR1- 38.44	299014
	TCR1- 47.08	299015
	TCR1- 57.67	299016
	TCR1- 70.62	299017
	TCR1- 86.5	299018
	TCR1- 105.9	299019
	TCR1- 129.7	299020
	TCR1- 158.9	299021
	TCR1- 194.6	299022

† Suitable for backstop mounting  
See page G3-36 for dimensions

### Size 1 Scoop Part Numbers ■

	NEMA A-C Motor Frame	Scoop Package	Scoop Package	Scoop Package
		PARA-FLEX Cplg.	GRID-LIGN Cplg.	Weights PARA-GRID
Double	143T, 145T	DCS01140P	DCS01140G	60/57
	182T, 185T	DCS01180P	DCS01180G	60/57
	213T, 215T	DCS01210P	DCS01210G	60/57
Triple	143T, 145T	TCS01140P	TCS01140G	60/57
	182T, 185T	TCS01180P	TCS01180G	60/57

\* Scoop package includes scoop, coupling, coupling guard, and mounting hardware.

### Size 1 Accessories\* ■

Description	Part Number	Weight (lbs)
AUXILIARY SEAL KIT	299701	3
BACKSTOP (2.25-194.6)	299375	28
SLIDE BASE	304627	45
TOP MOTOR MOUNT	299529	80

\* Baseplates refer to pages G3-38 and G3-39.

■ Refer to Table 12, page G3-34 for compatibility of various combinations of reducers and accessories.

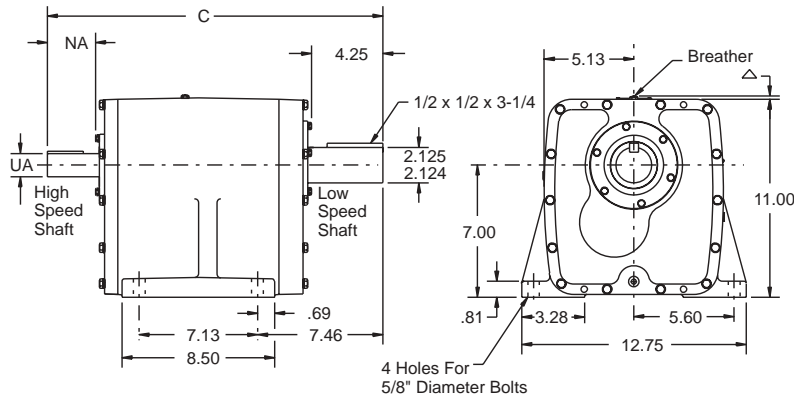
■ Sizes 1-3 discontinued. Remaining stock may be available

FEATURES/BENEFITS PAGE G3-3	NOMENCLATURE PAGE G3-6	EASY SELECTION PAGE G3-7	RELATED PRODUCTS PAGE G3-55
--------------------------------	---------------------------	-----------------------------	--------------------------------



# SELECTION/DIMENSIONS

## MAXUM Concentric Reducer Size 2



△ 1-1/2" will clear breather on all size units.

Size 2	C	NA	UA	Key	Weight (lbs.)
Double Reduction	20.63	3.05	1.375/1.374	5/16 x 5/16 x 2-3/16	160
Triple Reduction	20.63	3.05	1.375/1.374	5/16 x 5/16 x 2-3/16	175

### Size 2 Part Numbers

Nominal Ratio		Separate Reducer †
D O U B L E	DCR2- 2.25	299023
	DCR2- 2.75	299024
	DCR2- 3.37	299025
	DCR2- 4.13	299026
	DCR2- 5.06	299027
	DCR2- 6.2	299028
	DCR2- 7.59	299029
	DCR2- 9.3	299030
	DCR2- 11.39	299031
	DCR2- 13.95	299032
	DCR2- 17.09	299033
	DCR2- 20.93	299034
T R I P L E	TCR2- 25.63	299035
	TCR2- 31.39	299036
	TCR2- 38.44	299037
	TCR2- 47.08	299038
	TCR2- 57.67	299039
	TCR2- 70.62	299040
	TCR2- 86.5	299041
	TCR2- 105.9	299042
	TCR2- 129.7	299043
	TCR2- 158.9	299044
TCR2- 194.6	299045	

† Suitable for backstop mounting  
See page G3-36 for dimensions

### Size 2 Scoop Part Numbers ■

NEMA A-C Motor Frame		Scoop Package PARA-FLX Cplg.	Scoop Package GRID-LIGN Cplg.	Scoop Package Weights PARA-GRID
D O U B L E	143T, 145T	DCS02140P	DCS02140G	101/98
	182T, 185T	DCS02180P	DCS02180G	101/98
	213T, 215T	DCS02210P	DCS02210G	101/98
	254T, 256T	DCS02250P	DCS02250G	116/110
T R I P L E	143T, 145T	TCS02140P	TCS02140G	101/98
	182T, 185T	TCS02180P	TCS02180G	101/98
	213T, 215T	TCS02210P	TCS02210G	101/98

\* Scoop package includes scoop, coupling, coupling guard, and mounting hardware.

### Size 2 Accessories\* ■

Description	Part Number	Weight (lbs)
AUXILIARY SEAL KIT	299699	3
BACKSTOP (2.25-194.6)	299375	28
SLIDE BASE	304628	48
TOP MOTOR MOUNT	299529	80

\* Baseplates refer to pages G3-38 and G3-39.

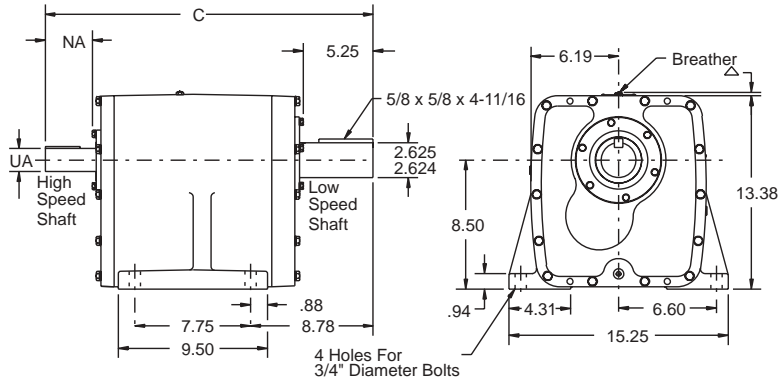
■ Refer to Table 12, page G3-34 for compatibility of various combinations of reducers and accessories.

■ Sizes 1-3 discontinued. Remaining stock may be available

FEATURES/BENEFITS PAGE G3-3	NOMENCLATURE PAGE G3-6	EASY SELECTION PAGE G3-7	RELATED PRODUCTS PAGE G3-55
--------------------------------	---------------------------	-----------------------------	--------------------------------



## MAXUM Concentric Reducer Size 3



△ 1-1/2" will clear breather on all size units.

Size 3	C	NA	NA (with fan)	UA	Key	Weight (lbs.)
Double Reduction	23.08	3.50	1.78	1.625/1.624	3/8 x 3/8 x 2-1/2	230
Triple Reduction	23.08	3.50	-	1.625/1.624	3/8 x 3/8 x 2-1/2	250

### Size 3 Part Numbers

	Nominal Ratio	Separate Reducer †
D O U B L E	DCR3- 2.25	299046
	DCR3- 2.75	299047
	DCR3- 3.37	299048
	DCR3- 4.13	299049
	DCR3- 5.06	299050
	DCR3- 6.2	299051
	DCR3- 7.59	299052
	DCR3- 9.3	299053
	DCR3- 11.39	299054
	DCR3- 13.95	299055
	DCR3- 17.09	299056
	DCR3- 20.93	299057
	DCR3- 25.63	299058
T R I P L E	TCR3- 31.39	299059
	TCR3- 38.44	299060
	TCR3- 47.08	299061
	TCR3- 57.67	299062
	TCR3- 70.62	299063
	TCR3- 86.5	299064
	TCR3- 105.9	299065
	TCR3- 129.7	299066
TCR3- 158.9	299067	
TCR3- 194.6	299068	

† Suitable for backstop mounting  
See page G3-36 for dimensions

### Size 3 Scoop Part Numbers ■

	NEMA A-C Motor Frame	Scoop Package		
		PARA-FLEX Cplg.	GRID-LIGN Cplg.	Weights PARA/GRID
DOUBLE	143T, 145T	DCS03140P	DCS03140G	116/114
	182T, 185T	DCS03180P	DCS03180G	120/114
	213T, 215T	DCS03210P	DCS03210G	120/114
	254T, 256T	DCS03250P	DCS03250G	125/119
	284T, 286T	DCS03280P	DCS03280G	149/140
	TRIPLE	143T, 145T	TCS03140P	TCS03140G
182T, 185T		TCS03180P	TCS03180G	120/114
213T, 215T		TCS03210P	TCS03210G	120/114
254T, 256T		TCS03250P	TCS03250G	125/119

\* Scoop package includes scoop, coupling, coupling guard, and mounting hardware.

### Size 3 Accessories\* ■

Description	Part Number	Weight (lbs)
AUXILIARY SEAL KIT	300305	3
BACKSTOP (7.59-194.6)+	299375	28
COOLING FAN	299519	8
SLIDE BASE	304629	54
TOP MOTOR MOUNT	299530	107

\* Baseplates refer to pages G3-38 and G3-39.

■ Refer to Table 12, page G3-34 for compatibility of various combinations of reducers and accessories.

+ For backstops on ratios not listed, consult DODGE

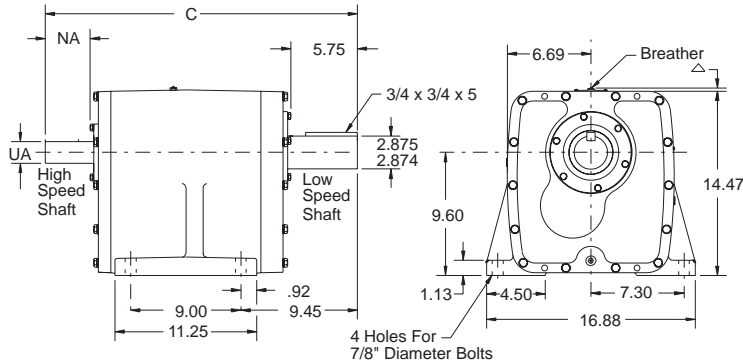
■ Sizes 1-3 discontinued. Remaining stock may be available

FEATURES/BENEFITS PAGE G3-3	NOMENCLATURE PAGE G3-6	EASY SELECTION PAGE G3-7	RELATED PRODUCTS PAGE G3-55
--------------------------------	---------------------------	-----------------------------	--------------------------------

# SELECTION/DIMENSIONS



## MAXUM Concentric Reducer Size 4



△ 1-1/2" will clear breather on all size units.

Size 4	C	NA	NA (with fan)	UA	Key	Weight (lbs.)
Double Reduction	25.47	3.50	1.78	1.625/1.624	3/8 x 3/8 x 2-1/2	330
Triple Reduction	25.47	3.50	-	1.625/1.624	3/8 x 3/8 x 2-1/2	330

### Size 4 Part Numbers

Nominal Ratio		Separate Reducer †
D O U B L E	DCR4- 2.25	299069
	DCR4- 2.75	299070
	DCR4- 3.37	299071
	DCR4- 4.13	299072
	DCR4- 5.06	299073
	DCR4- 6.2	299074
	DCR4- 7.59	299075
	DCR4- 9.3	299076
	DCR4- 11.39	299077
	DCR4- 13.95	299078
	DCR4- 17.09	299079
	DCR4- 20.93	299080
	DCR4- 25.63	299081
T R I P L E	TCR4- 31.39	299082
	TCR4- 38.44	299083
	TCR4- 47.08	299084
	TCR4- 57.67	299085
	TCR4- 70.62	299086
	TCR4- 86.5	299087
	TCR4- 105.9	299088
	TCR4- 129.7	299089
TCR4- 158.9	299090	
TCR4- 194.6	299091	

† Suitable for backstop mounting  
See page G3-36 for dimensions

### Size 4 Scoop Part Numbers ■

NEMA AC-Motor Frame	Scoop Package PARA-FLEX Cplg.	Scoop Package GRID-LIGN Cplg.	Scoop Package Weights	
			PARA/GRID	
DOUBLE	143T, 145T	DCS04140P	DCS04140G	134/132
	182T, 184T	DCS04180P	DCS04180G	138/132
	213T, 215T	DCS04210P	DCS04210G	138/132
	254T, 256T	DCS04250P	DCS04250G	143/137
	284T, 286T	DCS04280P	DCS04280G	167/158
	324T, 326T	DCS04320P	DCS04320G	174/170
TRIPLE	143T, 145T	TCS04140P	TCS04140G	134/132
	182T, 184T	TCS04180P	TCS04180G	138/132
	213T, 215T	TCS04210P	TCS04210G	138/132
	254T, 256T	TCS04250P	TCS04250G	143/137
	284T, 286T	TCS04280P	TCS04280G	167/158

\* Scoop package includes scoop, coupling, coupling guard, and mounting hardware.

### Size 4 Accessories\* ■

Description	Part Number	Weight (lbs)
AUXILIARY SEAL KIT	300302	3
BACKSTOP (13.95-194.6)+	299375	28
COOLING FAN	299520	6
SLIDE BASE	304630	95
TOP MOTOR MOUNT	299530	107

\* Baseplates refer to pages G3-38 and G3-39.

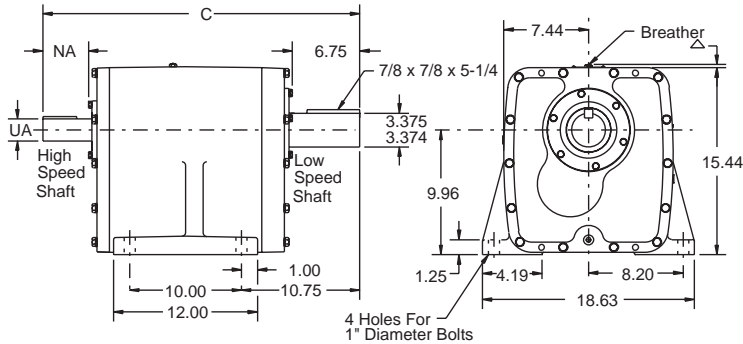
■ Refer to Table 12, page G3-34 for compatibility of various combinations of reducers and accessories.

+ For backstops on ratios not listed, consult DODGE

FEATURES/BENEFITS PAGE G3-3	NOMENCLATURE PAGE G3-6	EASY SELECTION PAGE G3-7	RELATED PRODUCTS PAGE G3-55
--------------------------------	---------------------------	-----------------------------	--------------------------------



## MAXUM Concentric Reducer Size 5



△ 1-1/2" will clear breather on all size units.

Size 5	C	NA	NA (with fan)	UA	Key	Weight (lbs.)
Double Reduction	29.14	4.51	2.69	2.125/2.124	1/2 x 1/2 x 3-3/8	420
Triple Reduction	28.05	3.42	-	1.625/1.624	3/8 x 3/8 x 2-1/2	450

### Size 5 Part Numbers

	Nominal Ratio	Separate Reducer †
D O U B L E	DCR5- 2.25	299092
	DCR5- 2.75	299093
	DCR5- 3.37	299094
	DCR5- 4.13	299095
	DCR5- 5.06	299096
	DCR5- 6.2	299097
	DCR5- 7.59	299098
	DCR5- 9.3	299099
	DCR5- 11.39	299100
	DCR5- 13.95	299101
	DCR5- 17.09	299102
	DCR5- 20.93	299103
DCR5- 25.63	299104	
T R I P L E	TCR5- 31.39	299105
	TCR5- 38.44	299106
	TCR5- 47.08	299107
	TCR5- 57.67	299108
	TCR5- 70.62	299109
	TCR5- 86.5	299110
	TCR5- 105.9	299111
	TCR5- 129.7	299112
TCR5- 158.9	299113	
TCR5- 194.6	299114	

† Suitable for backstop mounting  
See page G3-36 for dimensions

### Size 5 Scoop Part Numbers ■

NEMA AC-Motor Frame		Scoop Package PARA-FLEX Cplg.	Scoop Package GRID-LIGN Cplg.	Scoop Package Weights PARA/GRID
DOUBLE	213T, 215T	DCS05210P	DCS05210G	187/183
	254T, 256T	DCS05250P	DCS05250G	187/183
	284T, 286T	DCS05280P	DCS05280G	195/191
	324T, 326T	DCS05320P	DCS05320G	195/191
	364T, 365T	DCS05360P	DCS05360G	204/197
	143T, 145T	TCS05140P	TCS05140G	170/168
TRIPLE	182T, 184T	TCS05180P	TCS05180G	174/168
	213T, 215T	TCS05210P	TCS05210G	174/168
	254T, 256T	TCS05250P	TCS05250G	179/173
	284T, 286T	TCS05280P	TCS05280G	187/177

\* Scoop package includes scoop, coupling, coupling guard, and mounting hardware.

### Size 5 Accessories\* ■

Description	Part Number	Weight (lbs)
AUXILIARY SEALS (2.25-25.63)	300906	4
AUXILIARY SEALS (31.39-194.6)	300903	4
BACKSTOP (9.30-194.6)+	299377	28
COOLING FAN	299521	9
HEAT EXCHANGER	014148	55
SLIDE BASE	304631	100
TOP MOTOR MOUNT	299531	149

\* Baseplates refer to pages G3-38 and G3-39.

■ Refer to Table 12, page G3-34 for compatibility of various combinations of reducers and accessories.

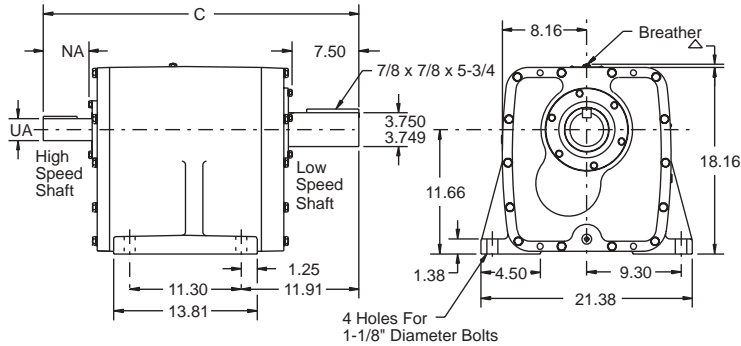
+ For backstops on ratios not listed, consult DODGE

FEATURES/BENEFITS PAGE G3-3	NOMENCLATURE PAGE G3-6	EASY SELECTION PAGE G3-7	RELATED PRODUCTS PAGE G3-55
--------------------------------	---------------------------	-----------------------------	--------------------------------

# SELECTION/DIMENSIONS



## MAXUM Concentric Reducer Size 6



△ 1-1/2" will clear breather on all size units.

Size 6	C	NA	NA (with fan)	UA	Key	Weight (lbs.)
Double Reduction	31.44	4.51	2.69	2.125/2.124	1/2 x 1/2 x 3-3/8	600
Triple Reduction	30.36	3.42	-	1.625/1.624	3/8 x 3/8 x 2-1/2	630

### Size 6 Part Numbers

	Nominal Ratio	Separate Reducer †
D O U B L E	DCR6- 2.25	299115
	DCR6- 2.75	299116
	DCR6- 3.37	299117
	DCR6- 4.13	299118
	DCR6- 5.06	299119
	DCR6- 6.2	299120
	DCR6- 7.59	299121
	DCR6- 9.3	299122
	DCR6- 11.39	299123
	DCR6- 13.95	299124
	DCR6- 17.09	299125
	DCR6- 20.93	299126
DCR6- 25.63	299127	
T R I P L E	TCR6- 31.39	299128
	TCR6- 38.44	299129
	TCR6- 47.08	299130
	TCR6- 57.67	299131
	TCR6- 70.62	299132
	TCR6- 86.5	299133
	TCR6- 105.9	299134
	TCR6- 129.7	299135
	TCR6- 158.9	299136
	TCR6- 194.6	299137

† Suitable for backstop mounting  
See page G3-36 for dimensions

### Size 6 Scoop Numbers ■

NEMA A-C Motor Frame		Scoop Package PARA-FLEX Cplg	Scoop Package GRID-LIGN Cplg	Scoop Package Weights PARA/GRID
DOUBLE	213T, 215T	DCS06210P	DCS06210G	198/200
	254T, 256T	DCS06250P	DCS06250G	198/200
	284T, 286T	DCS06280P	DCS06280G	206/208
	324T, 326T	DCS06320P	DCS06320G	206/208
	364T, 365T	DCS06360P	DCS06360G	215/208
	TRIPLE	182T, 184T	TCS06180P	TCS06180G
213T, 215T		TCS06210P	TCS06210G	185/179
254T, 256T		TCS06250P	TCS06250G	190/184
284T, 286T		TCS06280P	TCS06280G	197/188
324T, 326T		TCS06320P	TCS06320G	204/200
364T, 365T		TCS06360P	TCS06360G	218/211

\* Scoop package includes scoop, coupling, coupling guard, and mounting hardware.

### Size 6 Accessories\* ■

Description	Part Number	Weight (lbs)
AUXILIARY SEALS (2.25-25.63)	300904	5
AUXILIARY SEALS (31.39-194.6)	301204	5
BACKSTOP (13.95-194.6)+	299377	28
COOLING FAN	299522	10
HEAT EXCHANGER	014148	55
SLIDE BASE	304632	112
TOP MOTOR MOUNT	299531	149

\* Baseplates refer to pages G3-38 and G3-39.

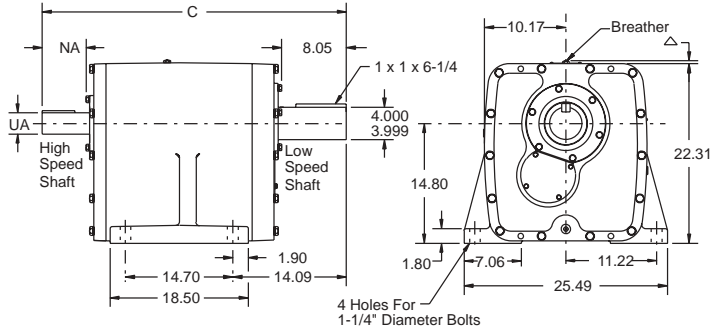
■ Refer to Table 12, page G3-34 for compatibility of various combinations of reducers and accessories.

+ For backstops on ratios not listed, consult DODGE

FEATURES/BENEFITS PAGE G3-3	NOMENCLATURE PAGE G3-6	EASY SELECTION PAGE G3-7	RELATED PRODUCTS PAGE G3-55
--------------------------------	---------------------------	-----------------------------	--------------------------------



## MAXUM Concentric Reducer Size 7



△ 1-1/2" will clear breather on all size units.

Size 7	C	NA	NA (with fan)	UA	Key	Weight (lbs.)
Double Reduction	39.06	5.41	3.75	2.625/2.624	5/8 x 5/8 x 4-1/4	1180
Triple Reduction	37.64	3.77	-	1.875/1.874	1/2 x 1/2 x 2-1/2	1220

### Size 7 Part Numbers

Nominal Ratio		Separate Reducer	Backstop (1) (2) Reducer
D O U B L E	DCR7- 5.06	299138	303100
	DCR7- 6.2	299139	303101
	DCR7- 7.59	299140	303102
	DCR7- 9.3	299141	303103
	DCR7- 11.39	299142	303104
	DCR7- 13.95	299143	303105
	DCR7- 17.09	299144	303106
	DCR7- 20.93	299145	303107
T R I P L E	DCR7- 25.63	299146	303108
	TCR7- 31.39	299147	303109
	TCR7- 38.44	299148	303110
	TCR7- 47.08	299149	303111
	TCR7- 57.67	299150	303112
	TCR7- 70.62	299151	303113
	TCR7- 86.5	299152	303114
	TCR7- 105.9	299153	303115
TCR7- 129.7	299154	303116	
TCR7- 158.9	299155	303117	
TCR7- 194.6	299156	303118	

- (1) Backstop dimensions page G3-36.  
 (2) Reducer includes extended high speed shaft for external backstop. External backstop assembly not included, see accessories.

### Size 7 Scoop Part Number ■

NEMA A-C Motor Frame		Scoop Package PARA-FLEX Cplg.	Scoop Package GRID-LIGN Cplg.	Scoop Package Weights PARA/GRID
D O U B L E	254T, 256T	DCS07250P	DCS07250G	253/246
	284T, 286T	DCS07280P	DCS07280G	253/246
	324T, 326T	DCS07320P	DCS07320G	253/246
	364T, 365T	DCS07360P	DCS07360G	253/246
	404T, 405T	DCS07400P	DCS07400G	356/321
	444T, 445T	DCS07440P	DCS07440G	436/341
T R I P L E	213T, 215T	TCS07210P	TCS07210G	230/221
	254T, 256T	TCS07250P	TCS07250G	230/221
	284T, 286T	TCS07280P	TCS07280G	243/234
	324T, 326T	TCS07320P	TCS07320G	243/234
	364T, 365T	TCS07360P	TCS07360G	252/245

\* Scoop package includes scoop, coupling, coupling guard, and mounting hardware.

### Size 7 Accessories\* ■

Description	Part Number	Weight (lbs)
AUXILIARY SEAL KIT	301504	6
BACKSTOP (5.06-25.63)	299379	25
BACKSTOP (31.39-194.6)	299380	16
COOLING FAN	299523	16
HEAT EXCHANGER	014148	55
SLIDE BASE	304633	245
TOP MOTOR MOUNT	299532	257

\* Baseplates refer to pages G3-38 and G3-39.

■ Refer to Table 12, page G3-34 for compatibility of various combinations of reducers and accessories.

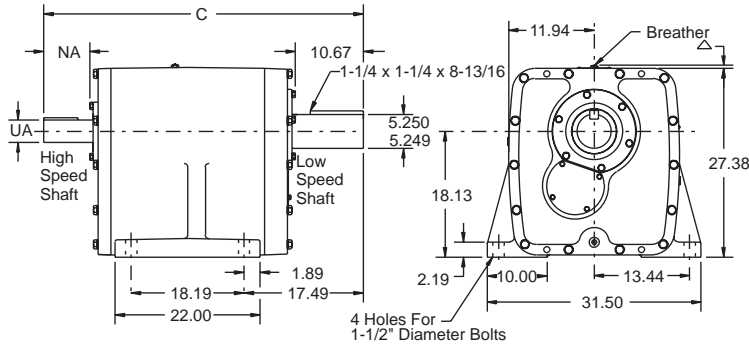
+ For backstops on ratios not listed, consult DODGE

FEATURES/BENEFITS PAGE G3-3	NOMENCLATURE PAGE G3-6	EASY SELECTION PAGE G3-7	RELATED PRODUCTS PAGE G3-55
--------------------------------	---------------------------	-----------------------------	--------------------------------

# SELECTION/DIMENSIONS



## MAXUM Concentric Reducer Size 9



△ 1-1/2" will clear breather on all size units.

	Size 9	C	NA	NA (with fan)	UA	Key	Weight (lbs.)
	Double Reduction	47.39	6.25	3.75	3.000/2.999	3/4 x 3/4 x 4-7/8	2160
	Triple Reduction	45.70	4.23	-	2.125/2.124	1/2 x 1/2 x 3-3/8	2240

### Size 9 Part Numbers

Nominal Ratio		Separate Reducer	Backstop (1) (2) Reducer
D O U B L E	DCR9- 5.06	299176	303138
	DCR9- 6.2	299177	303139
	DCR9- 7.59	299178	303140
	DCR9- 9.3	299179	303141
	DCR9- 11.39	299180	303142
	DCR9- 13.95	299181	303143
	DCR9- 17.09	299182	303144
	DCR9- 20.93	299183	303145
T R I P L E	DCR9- 25.63	299184	303146
	TCR9- 31.39	299185	303147
	TCR9- 38.44	299186	303148
	TCR9- 47.08	299187	303149
	TCR9- 57.67	299188	303150
	TCR9- 70.62	299189	303151
	TCR9- 86.5	299190	303152
	TCR9- 105.9	299191	303153
P L E	TCR9- 129.7	299192	303154
	TCR9- 158.9	299193	303155
	TCR9- 194.6	299194	303156

- (1) Backstop dimensions page G3-36.  
 (2) Reducer includes extended high speed shaft for external backstop. External backstop assembly not included, see accessories.

### Size 9 Scoop Part Numbers ■

NEMA A-C Motor Frame		Scoop Package PARA-FLEX Cplg	Scoop Package GRID-LIGN Cplg	Scoop Pkg. Weights PARA/GRID
DOUBLE	324T, 326T	DCS09320P	DCS09320G	362/327
	364T, 365T	DCS09360P	DCS09360G	363/327
	404T, 405T	DCS09400P	DCS09400G	418/382
	444T, 445T	DCS09440P	DCS09440G	500/405
TRIPLE	254T, 256T	TCS09250P	TCS09250G	294/290
	284T, 286T	TCS09280P	TCS09280G	294/290
	324T, 326T	TCS09320P	TCS09320G	305/301
	364T, 365T	TCS09360P	TCS09360G	314/307
	404T, 405T	TCS09400P	TCS09400G	415/380
	444T, 445T	TCS09440P	TCS09440G	498/403

\* Scoop package includes scoop, coupling, coupling guard, and mounting hardware.

### Size 9 Accessories\* ■

Description	Part Number	Weight (lbs)
AUXILIARY SEAL KIT	302104	8
BACKSTOP (5.06-11.39)	299384	55
BACKSTOP (13.95-25.63)	299385	31
BACKSTOP (31.39-194.6)	299386	25
COOLING FAN	299525	20
HEAT EXCHANGER	014148	55
SLIDE BASE	304635	300
TOP MOTOR MOUNT	299534	278

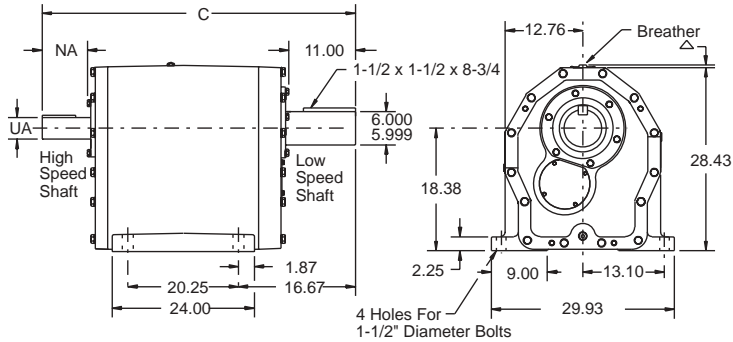
\* Baseplates refer to pages G3-38 and G3-39.

■ Refer to Table 12, page G3-34 for compatibility of various combinations of reducers and accessories.

FEATURES/BENEFITS PAGE G3-3	NOMENCLATURE PAGE G3-6	EASY SELECTION PAGE G3-7	RELATED PRODUCTS PAGE G3-55
--------------------------------	---------------------------	-----------------------------	--------------------------------



## MAXUM Concentric Reducer Size 10



△ 1-1/2" will clear breather on all size units.

Size 10	C	NA	NA (with fan)	UA	Key	Weight (lbs.)
Double Reduction	48.20	6.31	3.75	3.500/3.499	7/8 x 7/8 x 4-7/8	2420
Triple (31.39-70.62)	48.22	5.90	3.75	2.375/2.374	5/8 x 5/8 x 4-15/16	2550
Triple (86.50-194.6)	47.09	4.78	2.64	2.375/2.374	5/8 x 5/8 x 3-3/4	2550

### Size 10 Part Numbers

	Nominal Ratio	Separate Reducer	Backstop (1) (2) Reducer
D O U B L E	DCR10- 5.06	299195	303157
	DCR10- 6.2	299196	303158
	DCR10- 7.59	299197	303159
	DCR10- 9.3	299198	303160
	DCR10- 11.39	299199	303161
	DCR10- 13.95	299200	303162
	DCR10- 17.09	299201	303163
	DCR10- 20.93	299202	303164
	DCR10- 25.63	299203	303165
T R I P L E	TCR10- 31.39	299204	303166
	TCR10- 38.44	299205	303167
	TCR10- 47.08	299206	303168
	TCR10- 57.67	299207	303169
	TCR10- 70.62	299208	303170
	TCR10- 86.5	299209	303171
	TCR10- 105.9	299210	303172
	TCR10- 129.7	299211	303173
	TCR10- 158.9	299212	303174
TCR10- 194.6	299213	303175	

(1) Backstop dimensions page G3-36.

(2) Reducer includes extended high speed shaft for external backstop. External backstop assembly not included, see accessories.

### Size 10 Scoop Part Numbers ■

	NEMA A-C Motor Frame	Scoop Package PARA-FLEX Cplg.	Scoop Package GRID-LIGN Cplg.	Scoop Package Weights GRID-LIGN
D O U B L E	364T, 365T	DCS10360P	DCS10360G	467/372
	404T, 405T	DCS10400P	DCS10400G	509/414
	444T, 445T	DCS10440P	DCS10440G	518/423
T R I P L E	254T, 256T	TCS10250P	TCS10250G	317/310
	284T, 286T	TCS10280P	TCS10280G	317/310
	324T, 326T	TCS10320P	TCS10320G	336/330
	364T, 365T	TCS10360P	TCS10360G	336/330
	404T, 405T	TCS10400P	TCS10400G	432/397
	444T, 445T	TCS10440P	TCS10440G	518/423

\* Scoop package includes scoop, coupling, coupling guard, and mounting hardware.

### Size 10 Accessories\* ■

Description	Part Number	Weight (lbs)
AUXILIARY SEAL KIT	302408	9
BACKSTOP (5.06-11.39)	299387	57
BACKSTOP (13.95-70.62)	299388	33
BACKSTOP (86.50-194.6)	299389	27
COOLING FAN (5.06-25.63)	299526	23
COOLING FAN (31.39-194.6)	299842	23
HEAT EXCHANGER	014148	55
SLIDE BASE	304636	370
TOP MOTOR MOUNT	299535	283

\* Baseplates refer to pages G3-38 and G3-39.

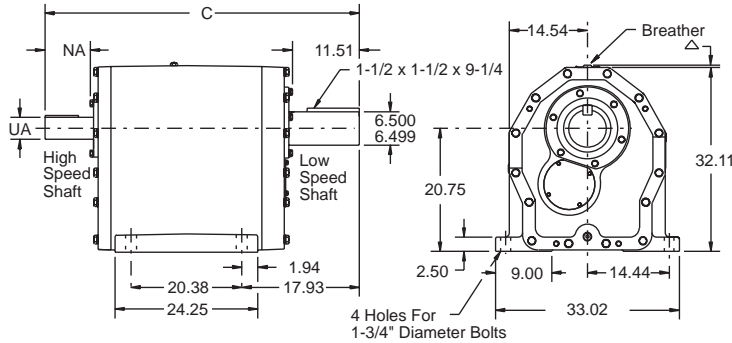
■ Refer to Table 12, page G3-34 for compatibility of various combinations of reducers and accessories.

FEATURES/BENEFITS PAGE G3-3	NOMENCLATURE PAGE G3-6	EASY SELECTION PAGE G3-7	RELATED PRODUCTS PAGE G3-55
--------------------------------	---------------------------	-----------------------------	--------------------------------

# SELECTION/DIMENSIONS



## MAXUM Concentric Reducer Size 11



△ 1-1/2" will clear breather on all size units.

Size 11	C	NA	NA (with fan)	UA	Key	Weight (lbs.)
Double Reduction	49.84	5.33	3.75	3.750/3.749	7/8 x 7/8 x 4-1/2	3240
Triple (31.39-70.62)	49.84	5.37	3.75	2.375/2.374	5/8 x 5/8 x 4-15/16	3400
Triple (86.50-194.6)	48.65	4.18	2.53	2.375/2.374	5/8 x 5/8 x 3-3/4	3400

### Size 11 Part Numbers

	Nominal Ratio	Separate Reducer	Backstop (1) (2) Reducer
D O U B L E	DCR11- 5.06	299214	303176
	DCR11- 6.2	299215	303177
	DCR11- 7.59	299216	303178
	DCR11- 9.3	299217	303179
	DCR11- 11.39	299218	303180
	DCR11- 13.95	299219	303181
	DCR11- 17.09	299220	303182
	DCR11- 20.93	299221	303183
	DCR11- 25.63	299222	303184
T R I P L E	TCR11- 31.39	299223	303185
	TCR11- 38.44	299224	303186
	TCR11- 47.08	299225	303187
	TCR11- 57.67	299226	303188
	TCR11- 70.62	299227	303189
	TCR11- 86.5	299228	303190
	TCR11- 105.9	299229	303191
	TCR11- 129.7	299230	303192
	TCR11- 158.9	299231	303193
TCR11- 194.6	299232	303194	

- (1) Backstop dimensions page G3-36.  
 (2) Reducer includes extended high speed shaft for external backstop. External backstop assembly not included, see accessories.

### Size 11 Scoop Part Numbers ■

NEMA A-C Motor Frame		Scoop Package PARA-FLEX Cplg.	Scoop Package GRID-LIGN Cplg.	Scoop Package Weights PARA-GRID
DOUBLE	364T, 365T	DCS11360P	DCS11360G	490/395
	404T, 405T	DCS11400P	DCS11400G	537/442
	444T, 445T	DCS11440P	DCS11440G	550/455
TRIPLE	284T, 286T	TCS11280P	TCS11280G	364/357
	324T, 326T	TCS11320P	TCS11320G	364/357
	364T, 365T	TCS11360P	TCS11360G	364/357
	404T, 405T	TCS11400P	TCS11400G	459/423
	444T, 445T	TCS11440P	TCS11440G	544/449

\* Scoop package includes scoop, coupling, coupling guard, and mounting hardware.

### Size 11 Accessories\* ■

Description	Part Number	Weight (lbs)
AUXILIARY SEAL KIT	302711	11
BACKSTOP (5.06-11.39)	299390	101
BACKSTOP (13.95-25.63)	299391	59
BACKSTOP (31.39-70.62)	299392	36
BACKSTOP (86.50-194.6)	299845	30
COOLING FAN (5.06-25.63)	299527	27
COOLING FAN (31.39-194.6)	299843	27
HEAT EXCHANGER	014148	55
SLIDE BASE	304637	380
TOP MOTOR MOUNT	299536	289

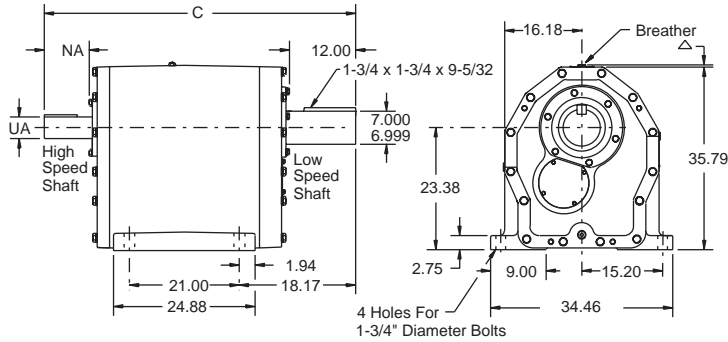
\* Baseplates refer to pages G3-38 and G3-39.

■ Refer to Table 12, page G3-34 for compatibility of various combinations of reducers and accessories.

FEATURES/BENEFITS PAGE G3-3	NOMENCLATURE PAGE G3-6	EASY SELECTION PAGE G3-7	RELATED PRODUCTS PAGE G3-55
--------------------------------	---------------------------	-----------------------------	--------------------------------



## MAXUM Concentric Reducer Size 12



△ 1-1/2" will clear breather on all size units.

Size 12	C	NA	NA (with fan)	UA	Key	Weight (lbs.)
Double Reduction	50.41	5.33	3.75	3.750/3.749	7/8 x 7/8 x 4-1/2	4000
Triple (31.39-70.62)	50.41	5.37	3.75	2.375/2.374	5/8 x 5/8 x 4-15/16	4200
Triple (86.50-194.6)	49.22	4.18	2.56	2.375/2.374	5/8 x 5/8 x 3-3/4	4200

### Size 12 Part Numbers

	Nominal Ratio	Separate Reducer	Backstop (1) (2) Reducer
D O U B L E	DCR12- 5.06	299233	-
	DCR12- 6.2	299234	303196
	DCR12- 7.59	299235	303197
	DCR12- 9.3	299236	303198
	DCR12- 11.39	299237	303199
	DCR12- 13.95	299238	303200
	DCR12- 17.09	299239	303201
	DCR12- 20.93	299240	303202
	DCR12- 25.63	299241	303203
T R I P L E	TCR12- 31.39	299242	303204
	TCR12- 38.44	299243	303205
	TCR12- 47.08	299244	303206
	TCR12- 57.67	299245	303207
	TCR12- 70.62	299246	303208
	TCR12- 86.5	299247	303209
	TCR12- 105.9	299248	303210
	TCR12- 129.7	299249	303211
	TCR12- 158.9	299250	303212
	TCR12- 194.6	299251	303213

(1) Backstop dimensions page G3-36.

(2) Reducer includes extended high speed shaft for external backstop. External backstop assembly not included, see accessories.

### Size 12 Scoop Part Numbers ■

	NEMA A-C Motor Frame	Scoop Package PARA-FLEX Cplg.	Scoop Package GRID-LIGN Cplg.	Scoop Package Weights PARA-GRID
D O U B L E	364T, 365T	DCS12360P	DCS12360G	505/410
	404T, 405T	DCS12400P	DCS12400G	552/457
	444T, 445T	DCS12440P	DCS12440G	565/470
T R I P L E	284T, 286T	TCS12280P	TCS12280G	379/372
	324T, 326T	TCS12320P	TCS12320G	379/372
	364T, 365T	TCS12360P	TCS12360G	379/372
	404T, 405T	TCS12400P	TCS12400G	474/438
	444T, 445T	TCS12440P	TCS12440G	559/464

\* Scoop package includes scoop, coupling, coupling guard, and mounting hardware.

### Size 12 Accessories\* ■

Description	Part Number	Weight (lbs)
AUXILIARY SEAL KIT	302713	11
BACKSTOP (6.20-11.39)	299393	103
BACKSTOP (13.95-25.63)	299394	61
BACKSTOP (31.39-70.62)	299395	38
BACKSTOP (86.50-194.6)	299846	32
COOLING FAN (5.06-25.63)	299528	31
COOLING FAN (31.39-194.6)	299844	31
HEAT EXCHANGER	014148	55
SLIDE BASE	304638	410
TOP MOTOR MOUNT	299537	301

\* Baseplates refer to pages G3-38 and G3-39.

■ Refer to Table 12, page G3-34 for compatibility of various combinations of reducers and accessories.

FEATURES/BENEFITS PAGE G3-3	NOMENCLATURE PAGE G3-6	EASY SELECTION PAGE G3-7	RELATED PRODUCTS PAGE G3-55
--------------------------------	---------------------------	-----------------------------	--------------------------------