



# NOMENCLATURE

## TORQUE-ARM II Shaft Mount Speed Reducers

### Basic TORQUE-ARM II Reducer TA1107H25

#### Shaft Mount Reducer Drive Accessories

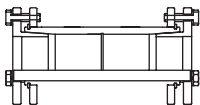
##### TA1107RA

TA1107 Rod Assembly



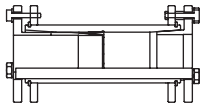
##### TA1107TB x 1-7/16

TA1107TB x 1-7/16 Twin Tapered Bushing Kit for Standard Length Driven Shaft



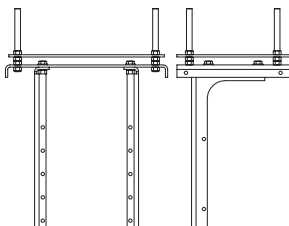
##### TA1107TBS x 1-7/16

TA1107TBS x 1-7/16 Twin Tapered Bushing Kit for Short Driven Shaft



##### TA1107MM

TA1107MM Motor Mount Assembly

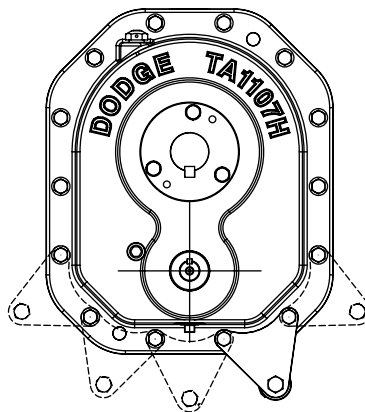


TA - TORQUE-ARM II Shaft Mount Reducer  
1 - Case Size 1

107 - AGMA Code reference & Traditional Bore Size

H - Heavy Duty Rating & Extended Bore Size

25 - Nominal Reducer Ratio



#### Other Accessories

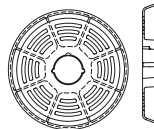
##### TA1107BS

Backstop Assembly



##### TA4207CF

Cooling Fan Assembly



##### TA1-4 FB Kit

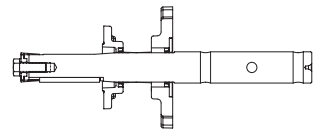
Filter Breather Kit



#### Screw Conveyor Drive Accessories

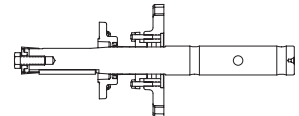
##### TA1107SCA

TA1107SCA Screw Conveyor Standard Adapter & Hardware Kit (does not include shaft)



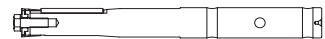
##### TA1107SCP Kit

TA1107SCP Screw Conveyor Adjustable Packing Kit (does not include shaft or adapter)



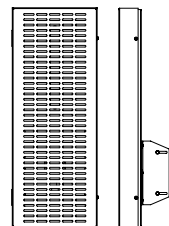
##### TA1107SCS x 1-7/16

TA1107SCS Screw Conveyor Drive Shaft x 1-7/16" Diameter



##### TA1107BG

TA1107BG Belt Guard



FEATURES/BENEFITS PAGE G1- 3	SPECIFICATION PAGE G1- 7	SELECTION/DIMENSIONS PAGE G1- 36	RELATED PRODUCTS PAGE G1- 123
---------------------------------	-----------------------------	-------------------------------------	----------------------------------