

MODIFICATIONS/ ACCESSORIES

DODGE®


Screw Conveyor Shaft Mount Speed Reducers SCXT SCREW CONVEYOR DRIVE OPTIONAL DRIVE SHAFTS

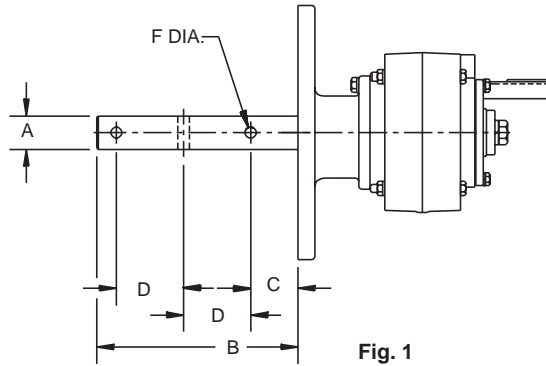


Fig. 1

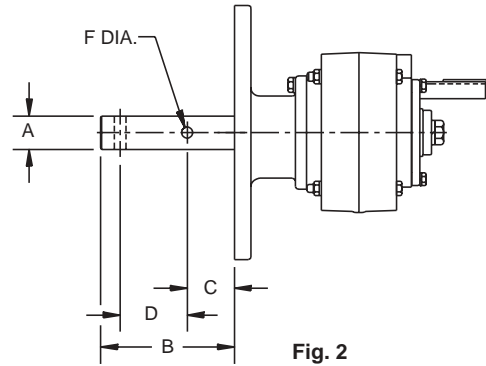


Fig. 2

SCXT1 Optional Drive Shafts

Description	Drive Shaft	Screw Dia.	Part No.	Figure	A	B	C	D	F	Weight
SCXT1 Stainless Steel * Drive Shafts	C1 x 1-1/2	6" - 9"	351147	2	1.50	6.00	2.13	3.00	0.52	7.20
	C1 x 2	9" - 12"	351148	2	2.00	6.00	2.13	3.00	0.64	9.10
	C1 x 2-7/16	12" - 14"	351149	2	2.44	6.69	2.75	3.00	0.64	12.50
	C1 x 3	12" - 20"	351150	2	3.00	6.88	2.88	3.00	0.77	17.40
SCXT1 3-Hole Drive Shafts	C1 x 1-1/2	6" - 9"	351300	1	1.50	9.00	2.13	3.00	0.52	8.70
	C1 x 2	9" - 12"	351301	1	2.00	9.00	2.13	3.00	0.64	11.80
	C1 x 2-7/16	12" - 14"	351302	1	2.44	9.69	2.75	3.00	0.64	16.40
	C1 x 3	12" - 20"	351303	1	3.00	9.88	2.88	3.00	0.77	23.40
SCXT1 Stainless Steel * 3-Hole Drive Shafts	C1 x 1-1/2	6" - 9"	351025	1	1.50	9.00	2.13	3.00	0.52	8.70
	C1 x 2	9" - 12"	351026	1	2.00	9.00	2.13	3.00	0.64	11.80
	C1 x 2-7/16	12" - 14"	351027	1	2.44	9.69	2.75	3.00	0.64	16.40
	C1 x 3	12" - 20"	351028	1	3.00	9.88	2.88	3.00	0.77	23.40

SCXT2 Optional Drive Shafts

Description	Drive Shaft	Screw Dia.	Part No.	Figure	A	B	C	D	F	Weight
SCXT2 Stainless Steel * Drive Shafts	C2 x 1-1/2	6" - 9"	352160	2	1.50	6.00	2.13	3.00	0.52	11.40
	C2 x 2	9" - 12"	352161	2	2.00	6.00	2.13	3.00	0.64	13.80
	C2 x 2-7/16	12" - 14"	352162	2	2.44	6.69	2.75	3.00	0.64	17.30
	C2 x 3	12" - 20"	352163	2	3.00	6.88	2.88	3.00	0.77	19
SCXT2 3-Hole Drive Shafts	C2 x 1-1/2	6" - 9"	351305	1	1.50	9.00	2.13	3.00	0.52	12.90
	C2 x 2	9" - 12"	351306	1	2.00	9.00	2.13	3.00	0.64	16.50
	C2 x 2-7/16	12" - 14"	351307	1	2.44	9.69	2.75	3.00	0.64	21.20
	C2 x 3	12" - 20"	351308	1	3.00	9.88	2.88	3.00	0.77	25
SCXT2 Stainless Steel * 3-Hole Drive Shafts	C2 x 1-1/2	6" - 9"	352186	1	1.50	9.00	2.13	3.00	0.52	12.90
	C2 x 2	9" - 12"	352187	1	2.00	9.00	2.13	3.00	0.64	16.50
	C2 x 2-7/16	12" - 14"	352188	1	2.44	9.69	2.75	3.00	0.64	21.20
	C2 x 3	12" - 20"	352189	1	3.00	9.88	2.88	3.00	0.77	25

* Supplied as #316 stainless steel.

FEATURES/BENEFITS
PAGE G2-3

NOMENCLATURE
PAGE G2-11

SELECTION/DIMENSIONS
PAGE G2-90

RELATED PRODUCTS
PAGE G2-152



Screw Conveyor Shaft Mount Speed Reducers

SCXT3A Optional Drive Shafts

Description	Drive Shaft	Screw Dia.	Part No.	Figure	A	B	C	D	F	Weight
SCXT3A Stainless Steel * Drive Shafts	C3A x 1-1/2	9"	243446	2	1.50	6.00	2.13	3.00	0.52	15
	C3A x 2	9" - 12"	243447	2	2.00	6.00	2.13	3.00	0.64	16
	C3A x 2-7/16	12" - 14"	243448	2	2.44	6.69	2.75	3.00	0.64	19.50
	C3A x 3	12" - 20"	243449	2	3.00	6.88	2.88	3.00	0.77	26
SCXT3A 3-Hole Drive Shafts	C3A x 1-1/2	9"	243016	1	1.50	9.00	2.13	3.00	0.52	16.50
	C3A x 2	9" - 12"	243017	1	2.00	9.00	2.13	3.00	0.64	18.70
	C3A x 2-7/16	12" - 14"	243018	1	2.44	9.69	2.75	3.00	0.64	23.40
	C3A x 3	12" - 20"	243019	1	3.00	9.88	2.88	3.00	0.77	32
SCXT3A Stainless Steel * 3-Hole Drive Shafts	C3A x 1-1/2	9"	353180	1	1.50	9.00	2.13	3.00	0.52	16.50
	C3A x 2	9" - 12"	353181	1	2.00	9.00	2.13	3.00	0.64	18.70
	C3A x 2-7/16	12" - 14"	353182	1	2.44	9.69	2.75	3.00	0.64	23.40
	C3A x 3	12" - 20"	353183	1	3.00	9.88	2.88	3.00	0.77	32

SCXT4A Optional Drive Shafts

Description	Drive Shaft	Screw Dia.	Part No.	Figure	A	B	C	D	F	Weight
SCXT4A Stainless Steel * Drive Shafts	C4A x 1-1/2	9"	244680	2	1.50	6.00	2.13	3.00	0.52	19
	C4A x 2	9" - 12"	244681	2	2.00	6.00	2.13	3.00	0.64	20.80
	C4A x 2-7/16	12" - 14"	244682	2	2.44	6.69	2.75	3.00	0.64	24.30
	C4A x 3	12" - 20"	244683	2	3.00	6.88	2.88	3.00	0.77	29.20
	C4A x 3-7/16	18" - 24"	244684	2	3.44	9.13	3.88	4.00	0.89	39.30
SCXT4A 3-Hole Drive Shafts	C4A x 1-1/2	9"	244494	1	1.50	9.00	2.13	3.00	0.52	20.50
	C4A x 2	9" - 12"	244496	1	2.00	9.00	2.13	3.00	0.64	23.50
	C4A x 2-7/16	12" - 14"	244497	1	2.44	9.69	2.75	3.00	0.64	28.20
	C4A x 3	12" - 20"	244498	1	3.00	9.88	2.88	3.00	0.77	35.20
	C4A x 3-7/16	18" - 24"	244499	1	3.44	14.13	3.88	4.00	0.89	49.80
SCXT4A Stainless Steel * 3-Hole Drive Shafts	C4A x 1-1/2	9"	354351	1	1.50	9.00	2.13	3.00	0.52	20.50
	C4A x 2	9" - 12"	354352	1	2.00	9.00	2.13	3.00	0.64	23.50
	C4A x 2-7/16	12" - 14"	354353	1	2.44	9.69	2.75	3.00	0.64	28.20
	C4A x 3	12" - 20"	354354	1	3.00	9.88	2.88	3.00	0.77	35.20
	C4A x 3-7/16	18" - 24"	354355	1	3.44	14.13	3.88	4.00	0.89	49.80

SCXT5B Optional Drive Shafts

Description	Drive Shaft	Screw Dia.	Part No.	Figure	A	B	C	D	F	Weight
SCXT5B Stainless Steel * Drive Shafts	C5B x 2	9" - 12"	245651	2	2.00	6.00	2.13	3.00	0.64	29.40
	C5B x 2-7/16	12" - 14"	245652	2	2.44	6.69	2.75	3.00	0.64	33
	C5B x 3	12" - 20"	245653	2	3.00	6.88	2.88	3.00	0.77	37.90
	C5B x 3-7/16	18" - 24"	245654	2	3.44	9.13	3.88	4.00	0.89	48.30
SCXT5B 3-Hole Drive Shafts	C5B x 2	9" - 12"	245474	1	2.00	9.00	2.13	3.00	0.64	32.10
	C5B x 2-7/16	12" - 14"	245476	1	2.44	9.69	2.75	3.00	0.64	36.90
	C5B x 3	12" - 20"	245477	1	3.00	9.88	2.88	3.00	0.77	43.90
	C5B x 3-7/16	18" - 24"	245478	1	3.44	14.13	3.88	4.00	0.89	58.80
SCXT5B Stainless Steel * 3-Hole Drive Shafts	C5B x 2	9" - 12"	355225	1	2.00	9.00	2.13	3.00	0.64	32.10
	C5B x 2-7/16	12" - 14"	355226	1	2.44	9.69	2.75	3.00	0.64	36.90
	C5B x 3	12" - 20"	355227	1	3.00	9.88	2.88	3.00	0.77	43.90
	C5B x 3-7/16	18" - 24"	355228	1	3.44	14.13	3.88	4.00	0.89	58.80

* Supplied as #316 stainless steel.

FEATURES/BENEFITS PAGE G2-3	NOMENCLATURE PAGE G2-11	SELECTION/DIMENSIONS PAGE G2-90	RELATED PRODUCTS PAGE G2-152
--------------------------------	----------------------------	------------------------------------	---------------------------------

MODIFICATIONS/ ACCESSORIES

DODGE


Screw Conveyor Shaft Mount Speed Reducers SCXT SCREW CONVEYOR DRIVE OPTIONAL DRIVE SHAFTS (CONT'D)

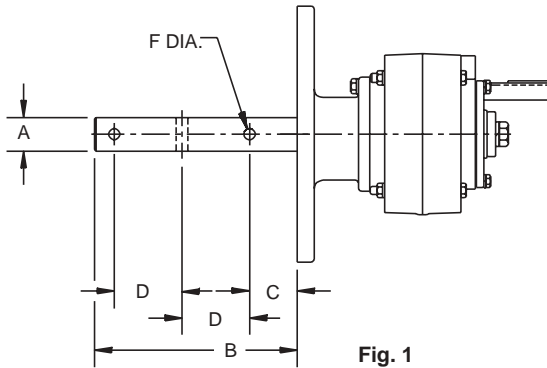


Fig. 1

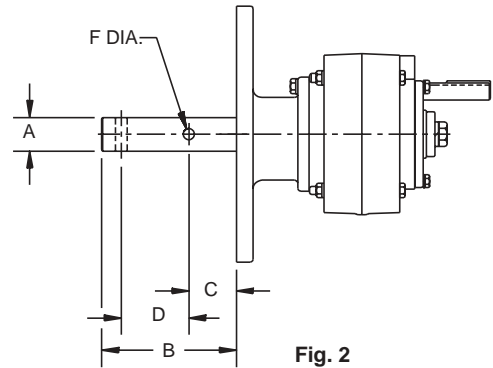


Fig. 2

SCXT6 Optional Drive Shafts

Description	Drive Shaft	Screw Dia.	Part No.	Figure	A	B	C	D	F	Weight
SCXT6 Stainless Steel * Drive Shafts	C6 x 2-7/16	12" - 14"	356014	2	2.44	6.69	2.75	3.00	0.64	47.7
	C6 x 3	12" - 20"	356015	2	3.00	6.88	2.88	3.00	0.77	52.7
	C6 x 3-7/16	18" - 24"	356016	2	3.44	9.13	3.88	4.00	0.89	63.0
SCXT6 3-Hole Drive Shafts	C6 x 2-7/16	12" - 14"	351327	1	2.44	9.69	2.75	3.00	0.64	51.6
	C6 x 3	12" - 20"	351328	1	3.00	9.88	2.88	3.00	0.77	58.7
	C6 x 3-7/16	18" - 24"	351329	1	3.44	14.13	3.88	4.00	0.89	73.5
SCXT6t Stainless Steel * 3-Hole Drive Shafts	C6 x 2-7/16	12" - 14"	356275	1	2.44	9.69	2.75	3.00	0.64	51.6
	C6 x 3	12" - 20"	356276	1	3.00	9.88	2.88	3.00	0.77	58.7
	C6 x 3-7/16	18" - 24"	356277	1	3.44	14.13	3.88	4.00	0.89	73.5

SCXT7 Optional Drive Shafts

Description	Drive Shaft	Screw Dia.	Part No.	Figure	A	B	C	D	F	Weight
SCXT7 Stainless Steel * Drive Shafts	C7 x 2-7/16	12" - 14"	356240	2	2.44	6.69	2.75	3.00	0.64	58.0
	C7 x 3	12" - 20"	356241	2	3.00	6.88	2.88	3.00	0.77	70.0
	C7 x 3-7/16	18" - 24"	356242	2	3.44	9.13	3.88	4.00	0.89	80.3
SCXT7 3-Hole Drive Shafts	C7 x 2-7/16	12" - 14"	351332	1	2.44	9.69	2.75	3.00	0.64	61.9
	C7 x 3	12" - 20"	351333	1	3.00	9.88	2.88	3.00	0.77	76.0
	C7 x 3-7/16	18" - 24"	351334	1	3.44	14.13	3.88	4.00	0.89	90.8
SCXT7 Stainless Steel *3-Hole Drive Shafts	C7 x 2-7/16	12" - 14"	356281	1	2.44	9.69	2.75	3.00	0.64	61.9
	C7 x 3	12" - 20"	356282	1	3.00	9.88	2.88	3.00	0.77	76.0
	C7 x 3-7/16	18" - 24"	356283	1	3.44	14.13	3.88	4.00	0.89	90.8

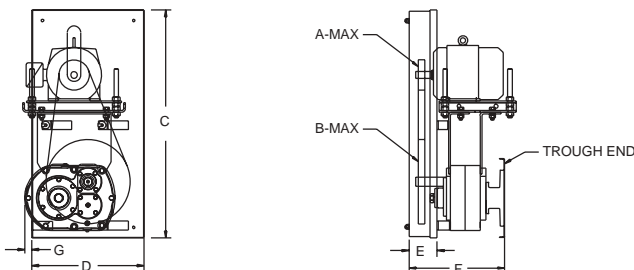
* Supplied as #316 stainless steel.

NOTE: See page G2-118 - G2-119 for dimensions and part numbers for drive shafts available for SCXT-8 Screw Conveyor Drives.

FEATURES/BENEFITS PAGE G2-3	NOMENCLATURE PAGE G2-11	SELECTION/DIMENSIONS PAGE G2-90	RELATED PRODUCTS PAGE G2-152
--------------------------------	----------------------------	------------------------------------	---------------------------------

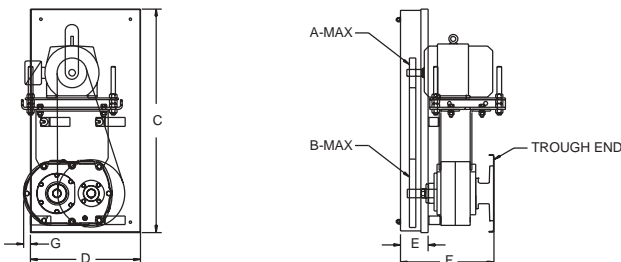


Screw Conveyor Shaft Mount Speed Reducers SLOTTED METAL PANEL BELT GUARDS



BELT GUARDS FOR DOUBLE REDUCTION SCXT REDUCERS (9, 15, 25:1) WITH STANDARD MOTOR MOUNTS

REDUCER SIZE	BELT GUARD SIZE	PART NUMBER	MOTOR MOUNT NO.	WT.	NEMA MOTOR FRAME	CENTER DISTANCE		A	B	C	D	E	F	G
						MIN.	MAX.							
SCXT1	SCXT1D	241489	M 112L	21	56T-215T	13.5	19.0	5.0	12.0	27.5	13.0	3.5	12.5	1.00
SCXT2	SCXT2D	242489	M 214L	32	56T-215T	14.9	20.0	5.0	12.0	30.0	14.0	3.8	13.5	0.875
SCXT3A	SCXT3D	243416 ▲	M 316L	40	56T-215T	15.8	22.0	6.0	14.0	32.5	16.0	4.0	14.6	1.06
SCXT4A	SCXT4D	244489	M 418L	44	143T-286T	16.9	24.5	7.0	15.0	37.0	17.0	5.0	16.8	1.78
SCXT5B	SCXT5D	245495 ▲	M 518L	45	143T-286T	16.6	25.2	7.0	15.0	37.0	18.0	4.3	18.9	3.25
SCXT6	SCXT6D	246476	M 620L	60	143T-326T	17.0	25.5	8.0	18.0	41.0	20.0	6.0	21.4	4.38
SCXT7	SCXT7D	247474	M 720L	75	143T-365T	17.1	26.0	10.0	20.0	43.0	23.0	6.0	23.5	6.25



BELT GUARDS FOR SINGLE REDUCTION SCXT REDUCERS (5:1) WITH STANDARD MOTOR MOUNTS

REDUCER SIZE	BELT GUARD SIZE	PART NUMBER	MOTOR MOUNT NO.	WT.	NEMA MOTOR FRAME	CENTER DISTANCE		A	B	C	D	E	F	G
						MIN.	MAX.							
SCXT105	SCXT1S	241491	M 112	30	56T-215T	15.4	20.6	5.0 ■	12.0	31.0	13.50	3.50	12.50	0.38
SCXT205	SCXT2S	242491	M 214	34	56T-215T	17.0	22.2	6.0 ■	12.0	33.0	13.50	3.75	13.50	1.25
SCXT305A	SCXT3S	243418 ▲	M 316	40	56T-215T	18.2	24.4	7.0	12.0	35.0	13.50	4.00	14.63	2.38
SCXT405A	SCXT4S	244491	M 418	50	143T-286T	19.6	27.2	8.0	12.0	40.0	14.50	5.00	16.75	3.63
SCXT505A	SCXT5S	245497 ▲	M 518	70	143T-286T	19.7	28.2	8.0	12.0	40.0	14.50	5.50	18.91	5.68
SCXT605	SCXT6S	246478	M 620	77	143T-326T	21.1	29.6	10.0	16.0	45.0	18.00	6.00	21.44	5.97
SCXT705	SCXT7S	247476	M 720	84	143T-365T	22.1	31.0	10.0	16.0	45.5	19.00	6.00	23.53	9.25

■ Guard will interfere with floor when used with 6" screw unless trough is raised above floor.

▲ These belt guards do not fit the larger frame, higher H.P. motor mounts in SCXT Selection/Dimension pages.
Consult DODGE for special belt guard.

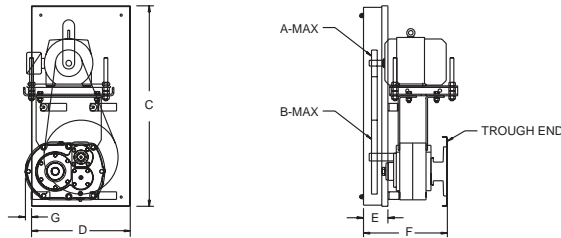
FEATURES/BENEFITS PAGE G2-3	NOMENCLATURE PAGE G2-11	SELECTION/DIMENSIONS PAGE G2-90	RELATED PRODUCTS PAGE G2-152
--------------------------------	----------------------------	------------------------------------	---------------------------------

MODIFICATIONS/ ACCESSORIES

DODGE®

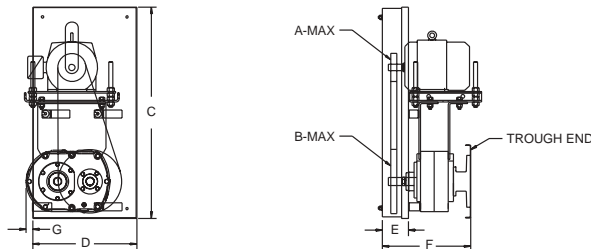


Screw Conveyor Shaft Mount Speed Reducers SLOTTED METAL PANEL BELT GUARDS



BELT GUARDS FOR DOUBLE REDUCTION SCXT REDUCERS (9, 15, 25:1) WITH LONG MOTOR MOUNTS

REDUCER SIZE	BELT GUARD SIZE	PART NUMBER	MOTOR MOUNT NO.	WT.	NEMA MOTOR FRAME	CENTER DISTANCE		A	B	C	D	E	F	G
						MIN.	MAX.							
SCXT1	SCXT1DLMM	241149	M120L	26	56T-215T	19.5	25.0	5.0	12.0	33.5	13.0	3.50	12.50	1.00
SCXT2	SCXT2DLMM	242223	M220L	37	56T-215T	20.9	26.0	5.0	12.0	36.0	14.0	3.75	13.50	0.875
SCXT3A	SCXT3DLMM	243154 ▲	M320L	45	56T-215T	21.8	27.0	6.0	14.0	38.0	16.0	4.00	14.63	1.06
SCXT4A	SCXT4DLMM	244152 ▲	M424L	50	143T-286T	23.2	30.4	7.0	15.0	43.0	17.0	5.00	16.75	1.78
SCXT5B	SCXT5DLMM	245103 ▲	M524L	52	143T-286T	22.9	30.9	7.0	15.0	43.0	18.0	4.25	18.91	3.25
SCXT6	SCXT6DLMM	246148	M624L	65	143T-326T	23.3	31.4	8.0	18.0	47.0	20.0	6.00	21.44	4.38
SCXT7	SCXT7DLMM	247153 ▲	M724L	80	143T-326T	23.2	30.5	10.0	20.0	49.0	23.0	6.00	23.53	6.25
SCXT8	SCXT8DLMM	248477 ♣	M824L	113	210T-360T	23.3	32.1	12.0	25.0	53.0	28.0	6.50	24.81	5.62



BELT GUARDS FOR SINGLE REDUCTION SCXT REDUCERS (5:1) WITH LONG MOTOR MOUNTS ♣

REDUCER SIZE	BELT GUARD SIZE	PART NUMBER	MOTOR MOUNT NO.	WT.	NEMA MOTOR FRAME	CENTER DISTANCE		A	B	C	D	E	F	G
						MIN.	MAX.							
SCXT105	SCXT1SLMM	241142	M120L	35	56T-215T	21.4	26.6	5.0 ■	12.0	37.0	13.5	3.50	12.50	0.38
SCXT205	SCXT2SLMM	242114	M220L	40	56T-215T	23.3	28.2	6.0 ■	12.0	39.0	13.5	3.75	13.50	1.25
SCXT305A	SCXT3SLMM	243167 ▲	M320L	45	56T-215T	24.2	29.4	7.0	12.0	41.0	13.5	4.00	14.63	2.38
SCXT405A	SCXT4SLMM	244167 ▲	M424L	55	143T-286T	25.9	33.2	8.0	12.0	46.0	14.5	5.00	16.75	3.63
SCXT505A	SCXT5SLMM	245015 ▲	M524L	70	143T-286T	26.0	33.2	8.0	12.0	46.0	14.5	5.50	18.91	5.68
SCXT605	SCXT6SLMM	246142	M624L	82	143T-326T	27.4	35.5	10.0	16.0	51.0	18.0	6.00	21.44	5.97
SCXT705	SCXT7SLMM	247149	M724L	90	143T-326T	28.2	35.6	10.0	16.0	51.5	19.0	6.00	23.53	9.25

■ Guard will interfere with floor when used with 6, screw unless trough is raised above floor.

▲ These belt guards do not fit the larger frame, higher H.P. motor mounts in SCXT Selection/Dimension pages.
Consult DODGE for special belt guard.

♣ Made to order.

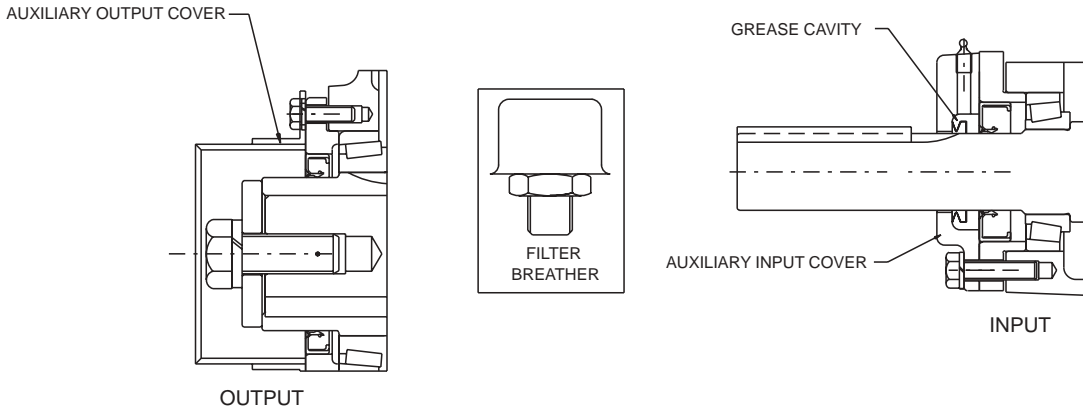
FEATURES/BENEFITS PAGE G2-3	NOMENCLATURE PAGE G2-11	SELECTION/DIMENSIONS PAGE G2-90	RELATED PRODUCTS PAGE G2-152
--------------------------------	----------------------------	------------------------------------	---------------------------------



Screw Conveyor Shaft Mount Speed Reducers AUXILIARY SEAL KIT FOR SCREW CONVEYOR DRIVE REDUCERS

Screw conveyor drives often operate in harsh environments in which the input shaft side of the reducer ends up turning in such materials as sand, cement, saw dust and grain. These materials are very abrasive and often damage seals, bearings and gears. These damages can lead to costly repair bills and downtime. To help prevent these maintenance problems DODGE offers an Auxiliary Seal Kit to protect the input side of the

reducer. The kit contains a drive shaft end cover, special filter breather and a grease purged input seal with necessary mounting hardware. The auxiliary seals prevent contaminants from getting to the seal area and thus prevents them from entering the reducer. Use the auxiliary seal kit to get the longest possible life out of your DODGE Screw Conveyor Drive Reducer.



SCXT Auxiliary Seal Kits ●

Reducer Size	Nominal Ratio	Part Number	Nominal Ratio	Part Number ♣
SCXT1	9, 15, 25	272721	5	251146
SCXT2	9, 15, 25	272722	5	252146
SCXT3A	9, 15, 25	243582	5	253146
SCXT4A	9, 15, 25	244677	5	254146
SCXT5A/SCXT5B	9, 15, 25	245637	5	255148
SCXT6	5, 9, 15, 25	272726	-	-
SCXT7	5, 9, 15, 25	272727	-	-
SCXT8	15, 25	248484 ♣	-	-

♣ Made to order.

● An input auxiliary seal cannot be used on the same input shaft with a cooling fan