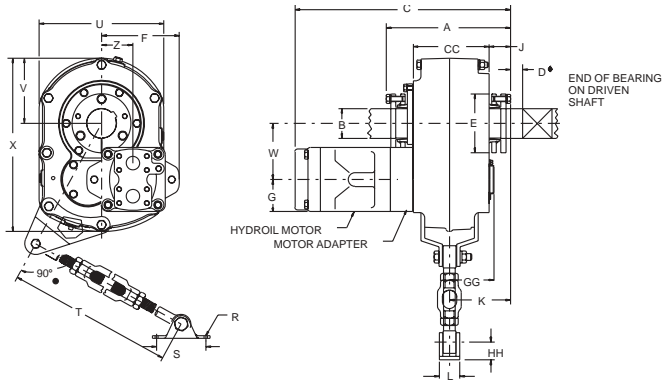


SELECTION/DIMENSIONS



HYDROIL TORQUE-ARM Shaft Mount Speed Reducers HXT1 THRU HXT7 TAPER BUSHED REDUCERS



- ◆ Recommended minimum distance to loosen bushing using bushing screws as jack screws.
Reducer will operate satisfactorily at 90° or 180° from normal position shown in front view by relocating breather and drain plugs.

- The ideal position for the TORQUE-ARM is at right angles to a line between the point of attachment of the TORQUE-ARM to the reducer and the output shaft. This may vary up to 30° either way. **CAUTION:** Exceeding the ± 30° variance of the TORQUE-ARM could result in excessive reaction load and result in damage to the equipment.

HXT1 THRU HXT7 HYDROIL DOUBLE REDUCTION TAPER BUSHED TORQUE-ARM SPEED REDUCERS

Reducer Size		AGMA Code		Gear Ratio		Part Number		Wt.	HYDROIL Motor		A	B Max. Bore	C	D	E	F	G	J	K
15:1	25:1	15:1	25:1	15:1	25:1	15:1	25:1		Size	Wt.									
.....	HXT125	107H25	25.64	241070	49	A10	11	7.06	1.44	13.22	1.25	3.25	4.47	2.41	1.28	3.53
HXT115	107H15	15.35	241069♣		A20										
HXT215	HXT225	115H15	115H25	14.10	23.46	242086	242087♣	65	A20	11	7.31	1.94	13.38	1.25	4.06	4.69	2.41	1.38	3.66
.....	HXT325A	205H25	24.71	243508	112	A20	11	9.22	2.19	14.64	1.50	4.38	4.88	2.41	1.58	4.44
HXT315A	203H15	14.88	243507		B30	30	15.45	5.75	2.38						
HXT415A	HXT425A	207H15	207H25	15.13	24.38	244532	244533	143	B30	30	10	2.44	16.13	1.75	4.81	6.19	2.38	1.81	4.75
.....	HXT525B	215H25	25.56	245558	212	B30	30	10.5	2.94	16.88	1.81	5.63	6.50	2.38	1.94	5.50
HXT515B	215H15	15.40	245557		B40	55	17.63	7.25	3.06						
HXT615	HXT625	307H15	307H25	15.33	25.13	246154	246155	293	B40	55	11.5	3.44	18.58	1.81	6.13	8.28	3.06	1.94	5.70
.....	HXT725	315H25	24.59	247165	470	B40	55	12.81	3.94	19.16	2.06	7.25	9.30	3.06	2.16	6.34
HXT715	315H15	15.23	247164		B50	106	22.75	9.30	3.69						

Reducer Size	L	R Bolt	S	T		U	V	W	X	Z	CC	GG	HH
				Min.	Max.								
HXT1	1.06	0.38	2.50	23.81	29.63	7.13	3.75	3.19	9.94	1.91	4.50	2.66	0.94
HXT2	1.25	0.44	3.00	26.94	32.94	8.38	4.13	3.75	11.41	2.13	4.56	2.94	1.06
HXT3A	1.25	0.44	3.00	26.94	32.94	9.25	4.81	4.19	12.88	2.31	6.38	3.25	1.06
HXT4A	1.44	0.50	4.00	29.19	35.19	10.38	5.50	4.78	15.13	2.75	6.88	3.38	1.75
HXT5B	1.44	0.50	4.00	29.19	35.19	13.13	6.56	5.69	18.31	3.06	7.06	4.50	1.75
HXT6	2.75	0.63	4.75	29.19	35.19	15.13	7.56	6.75	21.31	4.09	7.63	4.56	2.00
HXT7	2.75	0.63	4.75	29.44	35.44	18.75	9.38	8.31	25.94	5.13	8.13	4.69	2.00

Note: All reducers on this page require bushings. Stock HXT Reducers are drilled for vertical mounting. Reducer includes motor adapter.

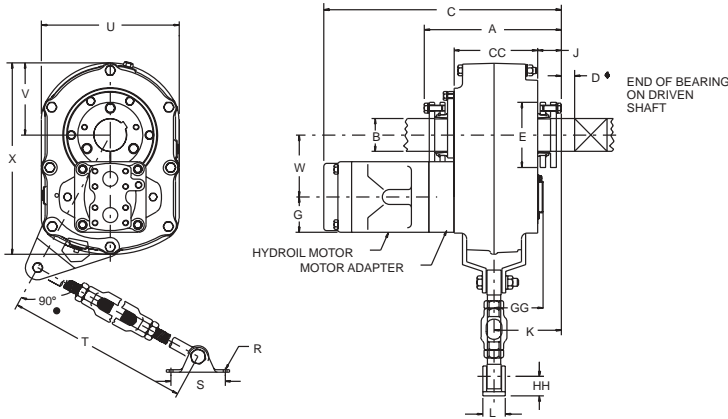
♥ See pages G2-28 thru G2-53 for bore and keyseat information and bushing part numbers.

♣ Made to order.

FEATURES/BENEFITS PAGE G2-3	NOMENCLATURE PAGE G2-11	SELECTION PAGE G2-81	RELATED PRODUCTS PAGE G2-152
--------------------------------	----------------------------	-------------------------	---------------------------------



HYDROIL TORQUE-ARM Shaft Mount Speed Reducers HXT105 THRU HXT505A TAPER BUSHED REDUCERS



Reducer will operate satisfactorily at 90° or 180° from normal position shown in front view by relocating breather and drain plugs.

- ◆ Recommended minimum distance to loosen bushing using bushing screws as jack screws.

- The ideal position for the TORQUE-ARM is at right angles to a line between the point of attachment of the TORQUE-ARM to the reducer and the output shaft. This may vary up to 30° either way. **CAUTION:** Exceeding the ± 30° variance of the TORQUE-ARM could result in excessive reaction load and result in damage to the equipment.

HXT105 THRU HXT505A HYDROIL SING REDUCTION TAPER BUSHED TORQUE-ARM SPEED REDUCERS

Reducer Size	AGMA Code	Gear Ratio	Part Number	Reducer Wt.	HYDROIL Motor		A	B Max. Bore ▼	C	D	E	G	J	K	L
					Size	Wt.									
HXT105	107H05	5.62	241085	44	B30	30	5.63	1.44	14.97	1.25	3.25	2.38	1.28	3.53	1.06
HXT205	115H05	5.29	242251	56	B30	30	5.81	1.94	15.25	1.25	4.06	2.38	1.38	3.66	1.25
HXT305A	203H05	5.6	253153	90	B40	55	6.88	2.19	17.66	1.5	4.38	3.06	1.58	4.44	1.25
HXT405A	207H05	5.65	254202	126	B40	55	7.81	2.44	18.69	1.75	4.81	3.06	1.81	4.75	1.44
HXT505A	215H05	5.67	255202 ♣	186	B50	106	8.38	2.94	22	1.81	5.63	3.69	1.92	4.13	1.44

Reducer Size	R Bolt	S	T		U	V	W	X	CC	GG	HH
			Min.	Max.							
HXT105	0.38	2.50	23.81	29.63	7.13	3.75	3.25	9.94	4.50	2.64	0.94
HXT205	0.44	3.00	26.94	32.94	8.50	4.13	3.88	11.41	4.56	2.83	1.06
HXT305A	0.44	3.00	26.94	32.94	9.25	4.81	4.28	12.88	6.38	3.25	1.06
HXT405A	0.50	4.00	29.19	35.19	10.38	5.50	4.88	15.13	6.88	3.38	1.75
HXT505A	0.50	4.00	29.19	35.19	13.13	6.56	5.88	18.31	7.06	4.50	1.75

Note: All reducers on this page require bushings. Stock HXT Reducers are drilled for vertical mounting. Reducer includes motor adapter.

▼ See pages G2-28 thru G2-53 for bore and keyseat information and bushing part numbers.

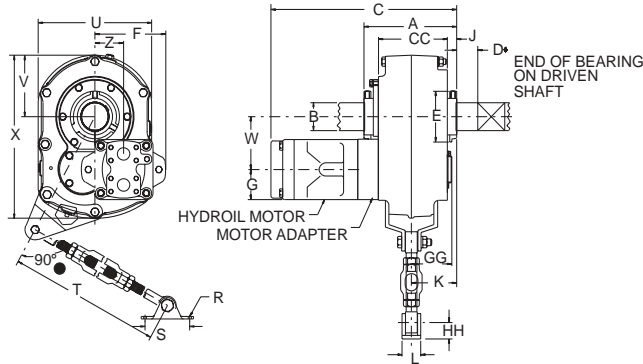
♣ Made to order.

FEATURES/BENEFITS PAGE G2-3	NOMENCLATURE PAGE G2-11	SELECTION PAGE G2-81	RELATED PRODUCTS PAGE G2-152
--------------------------------	----------------------------	-------------------------	---------------------------------



SELECTION/DIMENSIONS

HYDROIL TORQUE-ARM Shaft Mount Speed Reducers HXT1 THRU HXT7 STRAIGHT BORE REDUCERS



Reducer will operate satisfactorily at 90° or 180° from normal position shown in front view by relocating breather and drain plugs.

- The ideal position for the TORQUE-ARM is at right angles to a line between the point of attachment of the TORQUE-ARM to the reducer and the output shaft. This may vary up to 30° either way. **CAUTION:** Exceeding the ± 30° variance of the TORQUE-ARM could result in excessive reaction load and result in damage to the equipment.

HXT1 THRU HXT7 HYDROIL DOUBLE REDUCTION STRAIGHT BORE TORQUE-ARM SPEED REDUCERS

Reducer Size		AGMA Code		Gear Ratio		Part Number		Wt.	HYDROIL Motor		A	B Max. Bore	C	E	F	G	J	K	L
15:1	25:1	15:1	25:1	15:1	25:1	15:1	25:1		Size	Wt.									
.....	HXT125	107H25	25.64	241078♣	49	A10	11	5.63	1.44	12.50	3.19	4.47	2.41	0.56	2.81	1.06
HXT115	107H15	15.35	241077♣		A20	11	5.63	1.44	12.50	3.19	4.47	2.41	0.56	2.81	1.06
HXT215	HXT225	115H15	115H25	14.10	23.46	242094	242095♣	65	A20	11	5.81	1.94	12.63	3.56	4.69	2.41	0.63	2.91	1.25
.....	HXT325A	203H25	24.71	243520	112	A20	11	7.81	2.19	13.69	4.00	4.88	2.41	0.63	2.47	1.25
HXT315A	203H15	14.88	243519		B30	30	7.81	2.19	14.50	4.00	5.75	2.38	0.63	2.47	1.25
HXT415A	HXT425A	207H15	207H25	15.13	24.38	244544	244545	143	B30	30	8.22	2.44	15.16	4.38	6.19	2.38	0.84	3.88	1.44
.....	HXT525B	215H25	25.56	245570	212	B30	30	8.66	2.94	15.94	5.13	6.50	2.38	1.00	4.13	1.44
HXT515B	215H15	15.40	245569		B40	55	8.66	2.94	16.69	5.13	7.25	3.06	1.00	4.13	1.44
HXT615	HXT625	307H15	307H25	15.33	25.13	246162	246163	293	B40	55	9.63	3.44	17.69	5.63	8.28	3.06	1.00	4.81	2.75
.....	HXT725	315H25	24.59	247173	470	B40	55	10.78	3.94	18.19	6.69	9.31	3.06	1.14	5.39	2.75
HXT715	315H15	15.23	247172		B50	106	10.78	3.94	21.50	6.69	8.38	3.69	1.14	5.39	2.75

Reducer Size	R Bolt	S	T		U	V	W	X	Z	CC	GG	HH
			Min.	Max.								
HXT1	0.38	2.50	23.81	29.63	7.13	3.75	3.19	9.94	1.91	4.50	2.66	0.94
HXT2	0.44	3.00	26.94	32.94	8.38	4.13	3.75	11.41	2.13	4.56	2.94	1.06
HXT3A	0.44	3.00	26.94	32.94	9.25	4.81	4.19	12.88	2.31	6.38	3.25	1.06
HXT4A	0.50	4.00	29.19	35.19	10.38	5.50	4.78	15.13	2.75	6.88	3.38	1.75
HXT5B	0.50	4.00	29.19	35.19	13.13	6.56	5.69	18.31	3.06	7.06	4.50	1.75
HXT6	0.63	4.75	29.19	35.19	15.13	7.50	6.75	21.31	4.09	7.63	4.56	2.00
HXT7	0.63	4.75	29.44	35.44	18.75	9.38	8.31	25.94	5.13	8.50	4.69	2.00

Note: All reducers on this page require bushings. Stock HXT Reducers are drilled for vertical mounting. Reducer includes motor adapter.

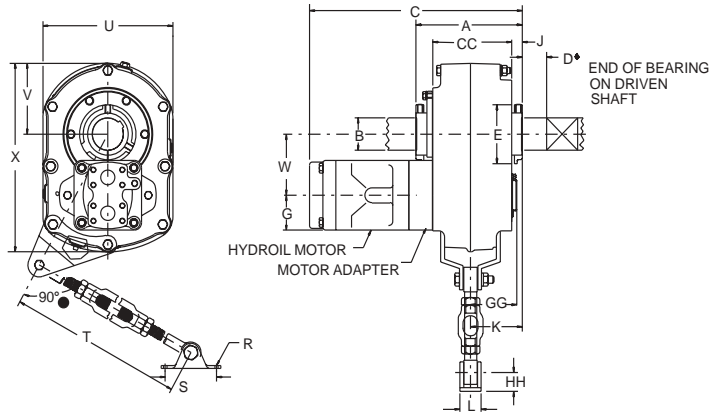
♥ See pages G2-28 thru G2-53 for bore and keyseat information and bushing part numbers.

♣ Made to order.

FEATURES/BENEFITS PAGE G2-3	NOMENCLATURE PAGE G2-11	SELECTION PAGE G2-81	RELATED PRODUCTS PAGE G2-152
--------------------------------	----------------------------	-------------------------	---------------------------------



HYDROIL TORQUE-ARM Shaft Mount Speed Reducers HXT105 THRU HXT505A STRAIGHT BORE REDUCERS



Reducer will operate satisfactorily at 90° or 180° from normal position shown in front view by relocating breather and drain plugs.

- The ideal position for the TORQUE-ARM is at right angles to a line between the point of attachment of the TORQUE-ARM to the reducer and the output shaft. This may vary up to 30° either way. **CAUTION:** Exceeding the ± 30° variance of the TORQUE-ARM could result in excessive reaction load and result in damage to the equipment.

HXT105 THRU HXT505A HYDROIL SINGLE REDUCTION STRAIGHT BORE TORQUE-ARM SPEED REDUCERS

Reducer Size	AGMA Code	Gear Ratio	Part Number	Reducer Wt.	HYDROIL Motor		A	B Max. Bore	C	D	E	G	J	K
					Size	Wt.								
HXT105	107H05	5.62	241089 ♣	44	B30	30	5.63	1.44	14.25	3.19	2.38	0.56	2.81	1.06
HXT205	115H05	5.29	242255	56	B30	30	5.81	1.94	14.5	3.56	2.38	0.63	2.91	1.25
HXT305A	203H05	5.6	253157	90	B40	55	7.41	2.19	16.69	4	3.06	0.63	4.44	1.25
HXT405A	207H05	5.65	254206 ♣	126	B40	55	8.22	2.44	17.72	4.38	3.06	0.84	4.75	1.44
HXT505A	215H05	5.67	255206 ♣	186	B50	106	8.66	2.94	21.06	5.13	3.69	1	4.13	1.44

Reducer Size	R Bolt	S	T		U	V	W	X	CC	GG	HH
			Min.	Max.							
HXT105	0.38	2.5	23.81	29.63	7.13	3.75	3.25	9.94	4.5	2.64	0.94
HXT205	0.44	3	26.94	32.94	8.5	4.13	3.88	11.41	4.56	2.83	1.06
HXT305A	0.44	3	26.94	32.94	9.25	4.81	4.29	12.88	6.38	3.25	1.06
HXT405A	0.5	4	29.19	35.19	10.38	5.5	4.88	15.13	6.88	3.38	1.75
HXT505A	0.5	4	29.19	35.19	13.13	6.56	5.88	18.31	7.06	4.15	1.75

Note: All reducers on this page require bushings. Stock HXT Reducers are drilled for vertical mounting. Reducer includes motor adapter.

♥ See pages G2-28 thru G2-53 for bore and keyseat information and bushing part numbers.

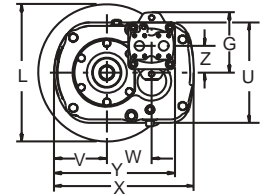
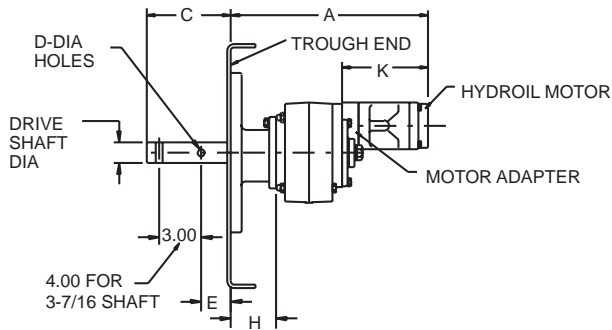
♣ Made to order.

FEATURES/BENEFITS PAGE G2-3	NOMENCLATURE PAGE G2-11	SELECTION PAGE G2-81	RELATED PRODUCTS PAGE G2-152
--------------------------------	----------------------------	-------------------------	---------------------------------



SELECTION/DIMENSIONS

HYDROIL Screw Conveyor Shaft Mount Speed Reducers



HSC1 THRU HSC7 DOUBLE REDUCTION HYDROIL SCREW CONVEYOR DRIVES †

Reducer Size	Drive Shaft Dia.	To Fit Screw Dia.	HYDROIL Motor		Parts When Ordering Separately											
					Reducer ■		CEMA Drive Shaft ★						Adapter Assy. ▲			
					Part Number		Wt.	Size	Part No.	Wt.	C	D	E	Size	Part No.	Wt.
15:1	25:1															
HSC115	1-1/2	6, 9	A20	11	⊗ 351191	⊕ 351192	46	C1 x 1-1/2	351094	7.2	6.00	0.52	2.13	C1A	351086	17
	2	9, 12					46	C1 x 2	351095	9.1	6.00	0.64	2.13			
HSC125	2-7/16	12, 14	A10	11	⊗ 351191	⊕ 351192	46	C1 x 2-7/16	351096	12.5	6.69	0.64	2.75	C1B	351087	22
	3	12 thru 20					46	C1 x 3	351097	17.4	6.88	0.77	2.88			
HSC215	1-1/2	6, 9	A20	11	⊗ 352191	⊗ 352192	58	C2 x 1-1/2	352090	11.4	6.00	0.52	2.13	C2A	352052	20
	2	9, 12					58	C2 x 2	352091	13.8	6.00	0.64	2.13			
HSC225	2-7/16	12, 14	A20	11	⊗ 352191	⊗ 352192	58	C2 x 2-7/16	352092	17.3	6.69	0.64	2.75	C2B	352053	25
	3	12 thru 20					58	C2 x 3	352093	22.1	6.88	0.77	2.88			
HSC315A	1-1/2	9	B30	11	⊗ 243528	⊗ 243529	90	C3A x 1-1/2	243562	13.5	6.00	0.52	2.13	C3	353047	27
	2	9, 12						C3A x 2	243563	16	6.00	0.64	2.13			
HSC325A	2-7/16	12, 14	A20	30	⊗ 243528	⊗ 243529	90	C3A x 2-7/16	243564	19.5	6.69	0.64	2.75	C3	353047	27
	3	12 thru 20						C3A x 3	243565	26	6.88	0.77	2.88			
HSC415A	1-1/2	9	B30	30	⊗ 244553	⊗ 244554	113	C4A x 1-1/2	244594	19	6.00	0.52	2.13	C4	354121	31
	2	9, 12						C4A x 2	244595	20.8	6.00	0.64	2.13			
HSC425A	2-7/16	12, 14	B30	30	⊗ 244553	⊗ 244554	113	C4A x 2-7/16	244596	24.3	6.69	0.64	2.75	C4	354121	31
	3	12 thru 20						C4A x 3	244597	29.2	6.88	0.77	2.88			
HSC425A	3-7/16	18 thru 24	B30	55	⊗ 244553	⊗ 244554	113	C4A x 3-7/16	244598	29.3	9.13	0.89	3.88	C4	354121	31
	3-7/16	18 thru 24						C4A x 3-7/16	244598	29.3	9.13	0.89	3.88			
HSC515B	2	9, 12	B40	30	⊗ 245578	⊗ 245579	165	C5B x 2	355175	29.4	6.00	0.64	2.13	C5	355072	43
	2-7/16	12, 14						C5B x 2-7/16	355176	33	6.69	0.64	2.75			
HSC525B	3	12 thru 20	B30	55	⊗ 245578	⊗ 245579	165	C5B x 3	355177	37.9	6.88	0.77	2.88	C5	355072	43
	3-7/16	18 thru 24						C5B x 3-7/16	355178	48.3	9.13	0.89	3.88			
HSC615	2-7/16	12, 14	B40	55	⊗ 356291	⊗ 356292	225	C6 x 2-7/16	356042	47.7	6.69	0.64	2.75	C6	356055	56
	3	12 thru 20						C6 x 3	356043	52.7	6.88	0.77	2.88			
HSC625	3-7/16	18 thru 24	B40	55	⊗ 356291	⊗ 356292	225	C6 x 3-7/16	356044	63	9.13	0.89	3.88	C6	356055	56
HSC715	2-7/16	12, 14	B50	55	⊗ 356296	⊗ 356297	390	C7 x 2-7/16	356182	65	6.69	0.64	2.75	C7	356187	72
	3	12 thru 20						C7 x 3	356183	70	6.88	0.77	2.88			
HSC725	3-7/16	18 thru 24	B40	106	⊗ 356296	⊗ 356297	390	C7 x 3-7/16	356184	80.3	9.13	0.89	3.88	C7	356187	72

FEATURES/BENEFITS PAGE G2-3	NOMENCLATURE PAGE G2-11	SELECTION PAGE G2-81	RELATED PRODUCTS PAGE G2-152
--------------------------------	----------------------------	-------------------------	---------------------------------



HYDROIL Screw Conveyor Shaft Mount Speed Reducers HSCT1 THRU HSCXT7 DOUBLE REDUCTION HYDROIL SCREW CONVEYOR DRIVES †

Reducer Size	Actual Ratio		Max. RPM of Shaft				A	G	H	K	L	U	V	W	X	Y	Z
	15:1	25:1	Input		Driven												
			15:1	25:1	15:1	25:1											
HSCXT1	15.35 25.64	2149	2179	140	85	15.34	4.47	3.22	7.44	♥	7.13	3.75	3.38	♥	9.34	1.91
HSCXT2	14.97	24.92	2096	2118	140	85	15.94	4.69	3.56	7.44	◆	8.38	4.09	3.77	◆	10.27	2.14
HSCXT3A	15.26 25.34	2136	2155	140	85	17.81 17.00	5.75 4.88	3.69	7.44	11.38	9.25	4.84	4.17	13.72	11.39 11.42	2.33
HSCXT4A	15.30	24.64	2142	2094	140	85	18.44	6.19	4.00	7.38	11.38	10.38	5.50	4.78	15.31	12.66	2.75
HSCXT5B	15.38 25.54	1919	2043	125	80	20.56 19.81	7.25 6.50	4.25	9.19 7.75	11.38	13.13	6.56	5.67	18.31	14.30 14.61	3.05
HSCXT6	15.33	25.13	1895	1985	125	80	21.81	8.28	5.50	9.31	11.38	15.13	7.56	6.73	21.31	17.36	4.09
HSCXT7	15.23 24.59	1767	1844	116	75	26.28 23.00	8.38 9.31	6.31	10.56 8.81	11.38	18.75	9.38	8.30	25.94	22.11 20.36	5.11

- † Complete drive consists of reducer, CEMA drive shaft with key, and adapter assembly. Drive is shipped unassembled.
- ▲ Includes adapter, necessary mounting bolts and seal retainer. Both lip type and braided type seals included for customer's choice of application.
- ★ CEMA drive shaft and key furnished unless otherwise specified. See pages G2-120 thru G2-122 for optional drive shafts available from DODGE.

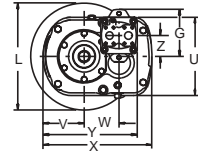
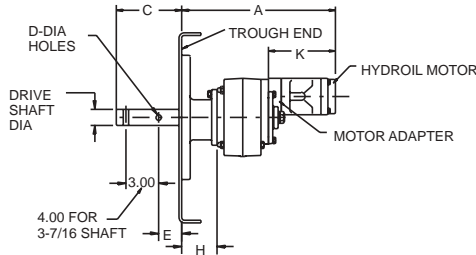
- Reducer includes hydroil motor adapter.
- ♥ L=7", X=9.94" when using a C1A adapter; L=11.38", X=11.88" when using a C1B adapter.
- ◆ L=7", X=11.41" when using a C2A adapter; L=11.38", X=13" when using a C2B adapter.
- ♣ Made to order.

FEATURES/BENEFITS PAGE G2-3	NOMENCLATURE PAGE G2-11	SELECTION PAGE G2-81	RELATED PRODUCTS PAGE G2-152
--------------------------------	----------------------------	-------------------------	---------------------------------

SELECTION/DIMENSIONS



HYDROIL Screw Conveyor Shaft Mount Speed Reducers



HSCT105 THRU HSCT505A SINGLE REDUCTION HYDROIL SCREW CONVEYOR DRIVES †

Reducer Size	Drive Shaft Dia.	To Fit Screw Dia	HYDROIL Motor		Parts/When Ordering Separately													
					Reducer ■		CEMA Drive Shaft ★						Adapter Assy. ▲					
					Size	Wt.	Part No.	Wt.	Size	Part No.	Wt.	C	D	E	Size	Part No.	Wt.	
HSCXT105	1-1/2	6, 9	B30	30	♣ 351190	41	C1 x 1-1/2	351094	7.2	6.00	0.52	2.13	C1A	351086	17			
	2	9, 12				41	C1 x 2	351095	9.1	6.00	0.64	2.13						
	2-7/16	12, 14				41	C1 x 2-7/16	351096	12.5	6.69	0.64	2.75				C1B	351087	22
	3	12 thru 20				41	C1 x 3	351097	14.4	6.88	0.77	2.88						
HSCXT205	1-1/2	6, 9	B30	30	♣ 352190	53	C2 x 1-1/2	352090	11.4	6.00	0.52	2.13	C2A	352052	20			
	2	9, 12				53	C2 x 2	352091	13.8	6.00	0.64	2.13						
	2-7/16	12, 14				53	C2 x 2-7/16	352092	17.3	6.69	0.64	2.75	C2B	352053	25			
	3	12 thru 20				53	C2 x 3	352093	22.1	6.88	0.77	2.88						
HSCXT305A	1-1/2	9	B40	55	♣ 253160	79	C3A x 1-1/2	243562	13.5	6.00	0.52	2.13	C3	353047	27			
	2	9, 12				79	C3A x 2	243563	16.0	6.00	0.64	2.13						
	2-7/16	12, 14				79	C3A x 2-7/16	243564	19.5	6.69	0.64	2.75						
	3	12 thru 20				79	C3A x 3	243565	26.0	6.88	0.77	2.88						
HSCXT405A	1-1/2	9	B40	55	♣ 254209	101	C4A x 1-1/2	244594	19.0	6.00	0.52	2.13	C4	354121	31			
	2	9, 12				101	C4A x 2	244595	20.8	6.00	0.64	2.13						
	2-7/16	12, 14				101	C4A x 2-7/16	244596	24.3	6.69	0.64	2.75						
	3	12 thru 20				101	C4A x 3	244597	29.2	6.88	0.77	2.88						
	3-7/16	18 thru 24				101	C4A x 3-7/16	244598	39.3	9.13	0.89	3.88						
HSCXT505A	2	9, 12	B50	106	♣ 255209	160	C5B x 2	355175	29.4	6.00	0.64	2.13	C5	355072	43			
	2-7/16	12, 14				160	C5B x 2-7/16	355176	33.0	6.69	0.64	2.75						
	3	12 thru 20				160	C5B x 3	355177	37.9	6.88	0.77	2.88						
	3-7/16	18 thru 24				160	C5B x 3-7/16	355178	48.3	9.13	0.89	3.88						

Reducer Size	Actual Ratio	Max. RPM of Shaft		A	H	K	L	U	V	W	X	Y
		Input	Driven									
HSCXT105	5.62	2246	400	16.28	3.22	8.38	♥	7.13	3.75	3.27	♥	9.39
HSCXT205	5.62	2246	400	16.50	3.56	8.50	◆	8.38	4.09	3.86	◆	10.33
HSCXT305A	5.31	2124	400	20.00	3.69	10.31	11.38	9.25	4.84	4.28	13.72	12.19
HSCXT405A	5.27	2108	400	21.00	4.00	10.63	11.38	10.38	5.50	4.88	15.94	16.50
HSCXT505A	5.69	2275	400	22.00	4.25	11.72	11.38	13.00	6.56	5.86	18.31	16.86

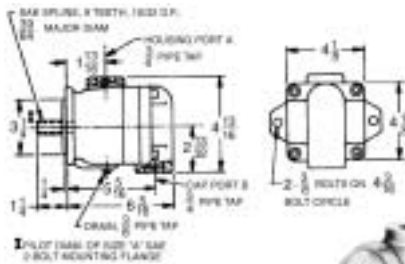
- † Complete drive consists of reducer, CEMA drive shaft with key, and adapter assembly. Drive is shipped unassembled.
- ▲ Includes adapter, necessary mounting bolts and seal retainer. Both lip type and braided type seals included for customer's choice of application.
- ★ CEMA drive shaft and key furnished unless otherwise specified. See pages G2-120 thru G2-122 for optional drive shafts available from DODGE.
- Reducer includes hydroil motor adapter.
- ♥ L=7", X=9.94" when using a C1A adapter; L=11.38", X=11.88" when using a C1B adapter.
- ◆ L=7", X=11.41" when using a C2A adapter; L=11.38", X=13" when using a C2B adapter.
- ♣ Made to order.

FEATURES/BENEFITS PAGE G2-3	NOMENCLATURE PAGE G2-11	SELECTION PAGE G2-81	RELATED PRODUCTS PAGE G2-152
--------------------------------	----------------------------	-------------------------	---------------------------------

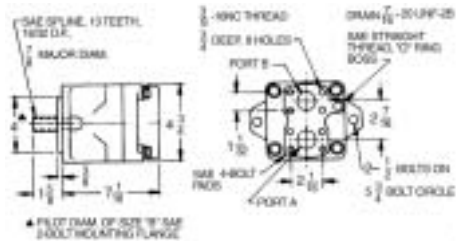
SELECTION/DIMENSIONS



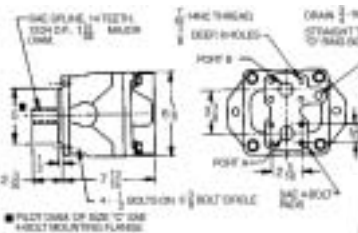
HYDROIL TORQUE-ARM Shaft Mount Speed Reducers HYDROIL VANE MOTORS



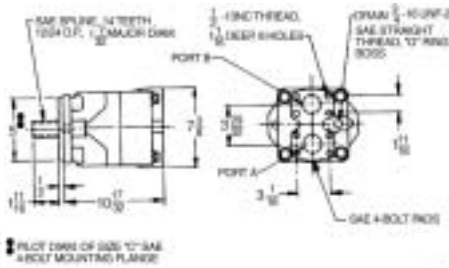
A10 & A20



B30 (Port A and Port B, 1" dia.)



B40 (Port A and Port B, 1 1/4" dia.)



B50 (Port A and Port B, 2" dia.)



Hydroil Vane Motors are superior single stage vane type fluid motor. A series of internal ports admit oil to and carry it from the power element. Complete hydraulic balance of the assembly contributes to the mechanical efficiency and long life of these motors as well as to their unusually quiet operation. Other exclusive features assure a minimum of friction and efficient valving action regardless of operating speeds.

HYDROIL Vane Motors can be run in either direction of rotation. Flow into port A (see drawing) will result in clockwise rotation as viewed from shaft end of motor. Flow into port B will result in counterclockwise rotation.

Inlet and outlet ports on sizes A10 and A20 will accommodate standard tapered pipe fittings. Larger sizes will accommodate SAE split flanges.

Drains should be connected to tank with connections and hoses capable of withstanding 50 psi. No drain is required on sizes A10 and A20 if the housing port is the low pressure port and is never subjected to more than 20 psi, in which case the motor drains internally.

HYDROIL Vane Motors for HXT Reducers

Motor Size	Part Number	Wt. (lbs)
A10	444049	11
A20	444050	11
B30	444054	30
B40	444055	55
B50	444056	106

NOTE: HXT1 thru HXT7 reducers are available in selected ratios to accommodate H, S, T and 2000-Series 6B spline, SAE "A" 2-bolt motors. See Related Products section for information on the HXT6B spline reducers.

FEATURES/BENEFITS PAGE G2-3	NOMENCLATURE PAGE G2-11	SELECTION PAGE G2-81	RELATED PRODUCTS PAGE G2-152
--------------------------------	----------------------------	-------------------------	---------------------------------