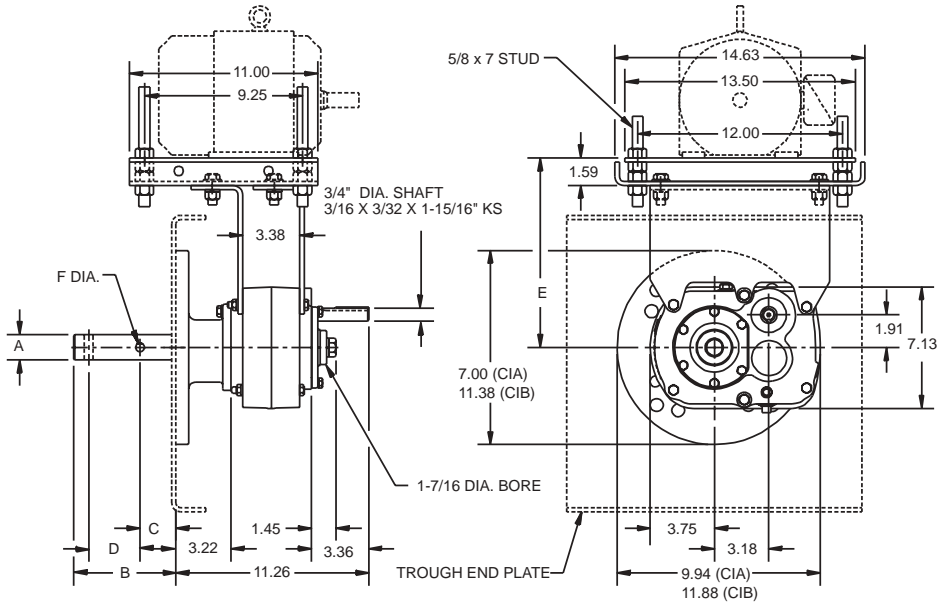




SELECTION/DIMENSIONS

Screw Conveyor Shaft Mount Speed Reducers SCXT1 - DOUBLE REDUCTION SCREW CONVEYOR DRIVES



SCXT1 Screw Conveyor Drives †

Reducers				
Size	Part No.	AGMA Code	Ratio	Weight
SCXT109	241480	107D09	9.44	45
SCXT115	351163	107D15	15.35	45
SCXT125	351164	107D25	25.64	45

CEMA Drive Shafts ★									Adapter Assembly ▲		
Drive Shaft	Screw Dia.	Part No.	A	B	C	D	F Dia.	Weight	Size	Part No.	Weight
C1 x 1-1/2	6" - 9"	351094	1.50	6.00	2.13	3.00	.52	7.2	C1A	351086	13
									AC1B ♠	356168	22
C1 x 2	9" - 12"	351095	2.00	6.00	2.13	3.00	.64	9.1	C1B	351087	27
C1 x 2-7/16	12" - 14"	351096	2.44	6.69	2.75	3.00	.64	12.5	AC1B ♠	356168	22
C1 x 3	12" - 20"	351097	3.00	6.88	2.88	3.00	.77	17.4			

FEATURES/BENEFITS PAGE G2-3	NOMENCLATURE PAGE G2-11	SELECTION PAGE G2-81	RELATED PRODUCTS PAGE G2-152
--------------------------------	----------------------------	-------------------------	---------------------------------



Screw Conveyor Shaft Mount Speed Reducers SCXT1 - DOUBLE REDUCTION SCREW CONVEYOR DRIVES

SCXT1 Accessories

Description	NEMA Motor Frame	Screw Dia.	Part No.	Weight
M112 Standard Motor Mount	56T thru 210T	6"-12"	351069	42
M120L Long Motor Mount	56T thru 210T	14"-20"	272625	51
SCXT1-D SCD Reducer Belt Guard	56T thru 210T	-	241489	27
SCXT1-D SCD Reducer Belt Guard for Long Motor Mount	56T thru 210T	-	241149	32
SCXT1 Auxiliary Seal Kit ♥	-	-	272721	2

SCXT1 Motor Mount Assembly Dimensions

Motor Mount	E ♦		V-Belt Drive Center Distances for Various NEMA Motor Frames					
			56, 140		180		210	
	Min.	Max.	Min.	Max.	Min.	Max.	Min.	Max.
M112	11.10	15.30	13.50	17.00	14.50	18.00	15.30	19.00
M120L	17.10	21.30	19.50	22.90	20.50	23.90	21.20	24.70

† Complete drive consists of reducer, CEMA drive shaft and key, and adapter assembly. Drive is shipped unassembled.

♣ AC adjustable packing adapter furnished if specified. C-style adapter is standard.

◆ Provides for V-Belt adjustment.

♥ See page G2-201 for drill and tap information required to mount to reducer.

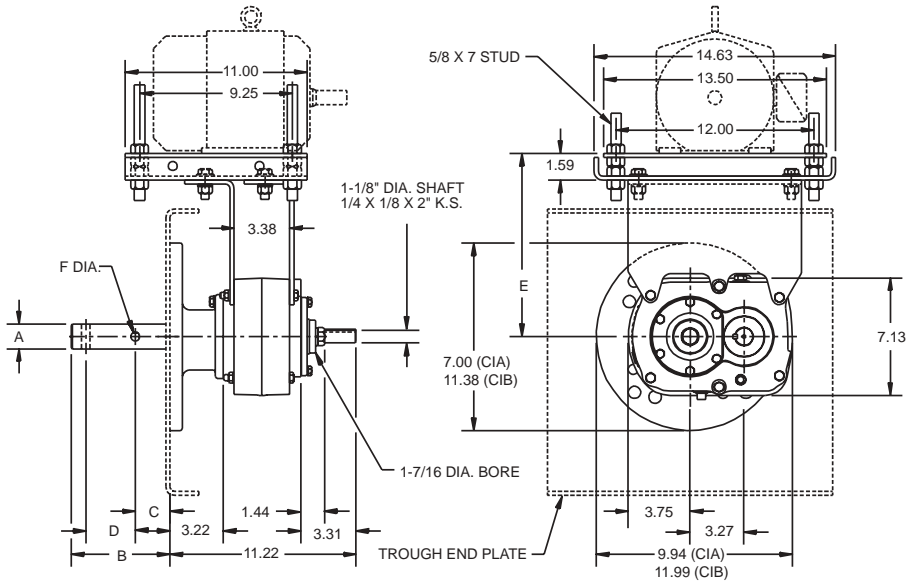
▲ Includes adapter, necessary mounting bolts, and seal retainer. Both lip type and braided type seals included for customer's choice of application.

★ CEMA drive shaft and key is furnished unless otherwise specified. See pages G2-120 thru G2-122 for optional drive shafts available from DODGE.



SELECTION/DIMENSIONS

Screw Conveyor Shaft Mount Speed Reducers SCXT105 - SINGLE REDUCTION SCREW CONVEYOR DRIVES



SCXT105 Screw Conveyor Drive †

Reducers				
Size	Part No.	AGMA Code	Ratio	Weight
SCXT105	351165	107S05	5.62	40

CEMA Drive Shafts ★									Adapter Assembly ▲		
Drive Shaft	Screw Dia.	Part No.	A	B	C	D	F Dia.	Weight	Size	Part No.	Weight
C1 x 1-1/2	6" - 9"	351094	1.50	6.00	2.13	3.00	.52	7.20	C1A	351086	13
									AC1B ♣	356168	22
C1 x 2	9" - 12"	351095	2.00	6.00	2.13	3.00	.64	9.10	C1B	351087	27
C1 x 2-7/16	12" - 14"	351096	2.44	6.69	2.75	3.00	.64	12.50	AC1B ♣	356168	22
C1 x 3	12" - 20"	351097	3.00	6.88	2.88	3.00	.77	17.40			

FEATURES/BENEFITS PAGE G2-3	NOMENCLATURE PAGE G2-11	SELECTION PAGE G2-81	RELATED PRODUCTS PAGE G2-152
--------------------------------	----------------------------	-------------------------	---------------------------------



Screw Conveyor Shaft Mount Speed Reducers SCXT105 - SINGLE REDUCTION SCREW CONVEYOR DRIVES

SCXT105 Accessories

Description	NEMA Motor Frame	Screw Dia.	Part No.	Weight
M112 Standard Motor Mount	56T thru 210T	6" - 12"	351069	42
M120L Long Motor Mount	56T thru 210T	14" - 20"	272625	51
SCXT1-S SCD Reducer Belt Guard	56T thru 210T	-	241491	30
SCXT1-S SCD Reducer Belt Guard for Long Motor Mount	56T thru 210T	-	241142	36
SCXT105 Auxiliary Seal Kit ♥	-	-	251146	2

SCXT105 Motor Mount Assembly Dimensions

Motor Mount	E ♦		V-Belt Drive Center Distances for Various NEMA Motor Frames					
			56, 140		180		210	
	Min.	Max.	Min.	Max.	Min.	Max.	Min.	Max.
M112	11.10	15.30	15.40	19.00	16.40	20.00	17.20	20.60
M120L	17.10	21.30	21.40	24.80	22.40	25.80	23.10	26.60

† Complete drive consists of reducer, CEMA drive shaft and key, and adapter assembly. Drive is shipped unassembled.

♣ AC adjustable packing adapter furnished if specified. C-style adapter is standard.

◆ Provides for V-Belt adjustment.

♥ See page G2-201 for drill and tap information required to mount to reducer.

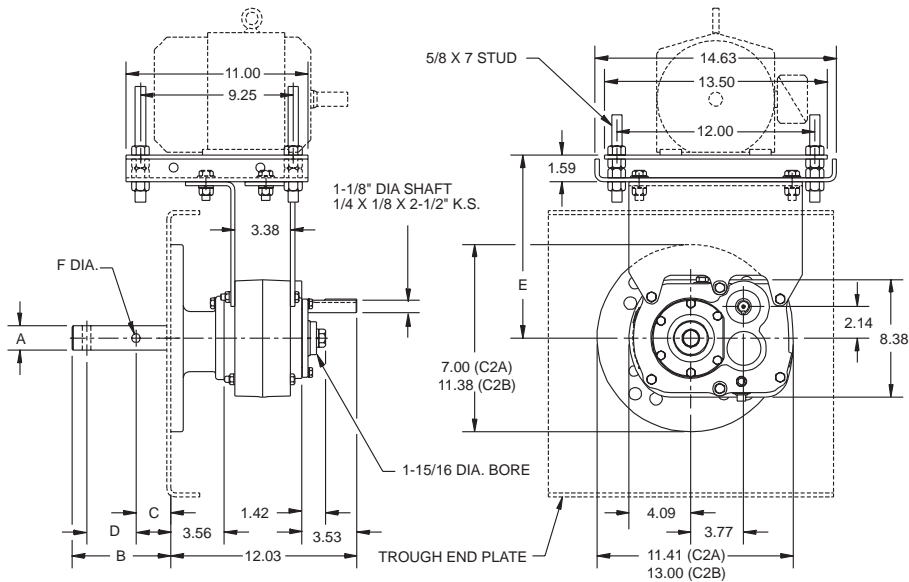
▲ Includes adapter, necessary mounting bolts, and seal retainer. Both lip type and braided type seals included for customer's choice of application.

★ CEMA drive shaft and key is furnished unless otherwise specified. See pages G2-120 thru G2-122 for optional drive shafts available from DODGE.



SELECTION/DIMENSIONS

Screw Conveyor Shaft Mount Speed Reducers SCXT2 - DOUBLE REDUCTION SCREW CONVEYOR DRIVES



SCXT2 Screw Conveyor Drive †

Reducers				
Size	Part No.	AGMA Code	Ratio	Weight
SCXT209	242480	115D09	9.25	58
SCXT215	352065	115D15	14.10	58
SCXT225	352066	115D25	23.46	58

CEMA Drive Shafts ★									Adapter Assembly ▲		
Drive Shaft	Screw Dia.	Part No.	A	B	C	D	F Dia.	Weight	Size	Part No.	Weight
C2 x 1-1/2	6" - 9"	352090	1.50	6.00	2.13	3.00	.52	11.40	C2A	352052	15
									AC2B ♠	356112	25
C2 x 2	9" - 12'	352091	2.00	6.00	2.13	3.00	.64	13.80	C2B	352053	26
C2 x 2-7/16	12" - 1'4"	352092	2.44	6.69	2.75	3.00	.64	17.30	AC2B ♠	356112	25
C2 x 3	12" - 20"	352093	3.00	6.88	2.88	3.00	.77	19			

FEATURES/BENEFITS PAGE G2-3	NOMENCLATURE PAGE G2-11	SELECTION PAGE G2-81	RELATED PRODUCTS PAGE G2-152
--------------------------------	----------------------------	-------------------------	---------------------------------



Screw Conveyor Shaft Mount Speed Reducers SCXT2 - DOUBLE REDUCTION SCREW CONVEYOR DRIVES

SCXT2 Accessories

Description	NEMA Motor Frame	Screw Dia.	Part No.	Weight
M214 Standard Motor Mount	56T thru 210T	6" - 14"	352069	43
M220L Long Motor Mount	56T thru 210T	16" - 20"	272626	51
SCXT2-D SCD Reducer Belt Guard	56T thru 210T	-	242489	32
SCXT2-D SCD Reducer Belt Guard for Long Motor Mount	56T thru 210T	-	242223	38
SCXT2 Auxiliary Seal Kit ♥	-	-	272722	3

SCXT2 Motor Mount Assembly Dimensions

Motor Mount	E ♦		V-Belt Drive Center Distances for Various NEMA Motor Frames					
			56, 140		180		210	
	Min.	Max.	Min.	Max.	Min.	Max.	Min.	Max.
M214	12.6	16.8	14.9	18.3	15.9	19.3	16.6	20.0
M220L	18.6	22.8	20.9	24.2	21.9	25.3	22.6	26.0

† Complete drive consists of reducer, CEMA drive shaft and key, and adapter assembly. Drive is shipped unassembled.

♣ AC adjustable packing adapter furnished if specified. C-style adapter is standard.

◆ Provides for V-Belt adjustment.

♥ See page G2-201 for drill and tap information required to mount to reducer.

▲ Includes adapter, necessary mounting bolts, and seal retainer. Both lip type and braided type seals included for customer's choice of application.

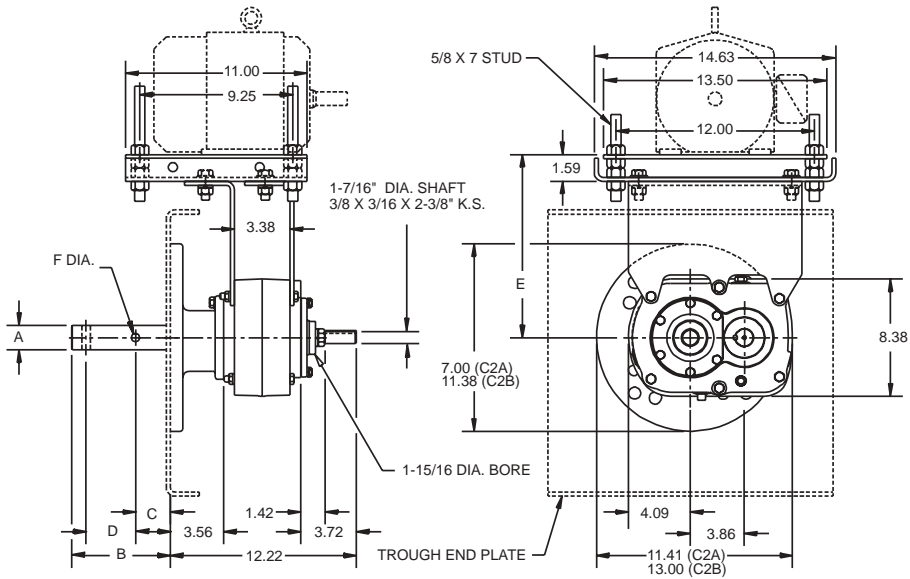
★ CEMA drive shaft and key is furnished unless otherwise specified. See pages G2-120 thru G2-122 for optional drive shafts available from DODGE.

FEATURES/BENEFITS PAGE G2-3	NOMENCLATURE PAGE G2-11	SELECTION PAGE G2-81	RELATED PRODUCTS PAGE G2-152
--------------------------------	----------------------------	-------------------------	---------------------------------



SELECTION/DIMENSIONS

Screw Conveyor Shaft Mount Speed Reducers SCXT205 - SINGLE REDUCTION SCREW CONVEYOR DRIVES



SCXT205 Screw Conveyor Drive †

Reducers				
Size	Part No.	AGMA Code	Ratio	Weight
SCXT205	352218	115S05	5.29	52

CEMA Drive Shafts ★									Adapter Assembly ▲		
Drive Shaft	Screw Dia.	Part No.	A	B	C	D	F Dia.	Weight	Size	Part No.	Weight
C2 x 1-1/2	6" - 9"	352090	1.50	6.00	2.13	3.00	.52	11.40	C2A	352052	15
									AC2B ♠	356112	25
C2 x 2	9" - 12"	352091	2.00	6.00	2.13	3.00	.64	13.80	C2B	352053	26
C2 x 2-7/16	12" - 1'4"	352092	2.44	6.69	2.75	3.00	.64	17.30	AC2B ♠	356112	25
C2 x 3	12" - 20"	352093	3.00	6.88	2.88	3.00	.77	19			



Screw Conveyor Shaft Mount Speed Reducers SCXT205 - SINGLE REDUCTION SCREW CONVEYOR DRIVES

SCXT205 Accessories

Description	NEMA Motor Frame	Screw Dia.	Part No.	Weight
M214 Standard Motor Mount	56T thru 210T	6" - 14"	352069	43
M220L Long Motor Mount	56T thru 210T	16" - 20"	272626	51
SCXT2-S SCD Reducer Belt Guard	56T thru 210T	-	242491	34
SCXT2-S SCD Reducer Belt Guard for Long Motor Mount	56T thru 210T	-	242114	41
SCXT205 Auxiliary Seal Kit ♥	-	-	252146	3

SCXT205 Motor Mount Assembly Dimensions

Motor Mount	E ♦		V-Belt Drive Center Distances for Various NEMA Motor Frames					
			56, 140		180		210	
	Min.	Max.	Min.	Max.	Min.	Max.	Min.	Max.
M214	12.6	16.8	17.0	20.5	18.0	21.4	18.7	22.2
M220L	18.6	22.8	23.0	26.4	24.0	27.5	24.7	28.2

† Complete drive consists of reducer, CEMA drive shaft and key, and adapter assembly. Drive is shipped unassembled.

♣ AC adjustable packing adapter furnished if specified. C-style adapter is standard.

◆ Provides for V-Belt adjustment.

♥ See page G2-201 for drill and tap information required to mount to reducer.

▲ Includes adapter, necessary mounting bolts, and seal retainer. Both lip type and braided type seals included for customer's choice of application.

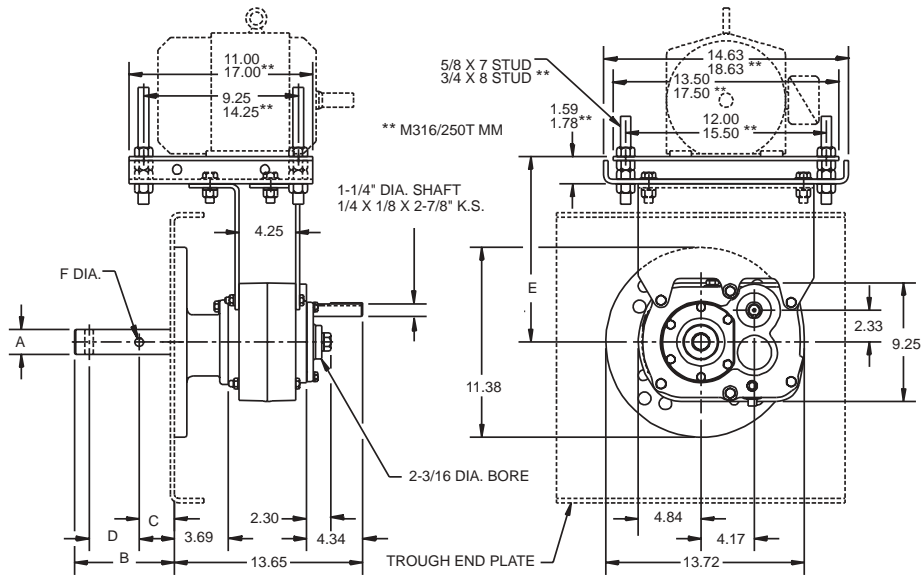
★ CEMA drive shaft and key is furnished unless otherwise specified. See pages G2-120 thru G2-122 for optional drive shafts available from DODGE.

FEATURES/BENEFITS PAGE G2-3	NOMENCLATURE PAGE G2-11	SELECTION PAGE G2-81	RELATED PRODUCTS PAGE G2-152
--------------------------------	----------------------------	-------------------------	---------------------------------



SELECTION/DIMENSIONS

Screw Conveyor Shaft Mount Speed Reducers SCXT3A - DOUBLE REDUCTION SCREW CONVEYOR DRIVES



SCXT3 Screw Conveyor Drives †

Reducers				
Size	Part No.	AGMA Code	Ratio	Weight
SCXT309A	243524	203D09	8.91	98
SCXT315A	243525	203D15	14.88	98
SCXT325A	243526	203D25	24.71	98

CEMA Drive Shafts ★									Adapter Assembly ▲		
Drive Shaft	Screw Dia.	Part No.	A	B	C	D	F Dia.	Weight	Size	Part No.	Weight
C3A x 1-1/2	9"	243562	1.50	6.00	2.13	3.00	.52	15	C3 AC3B ▲	353047 356163	29 27
C3A x 2	9" - 12"	243563	2.00	6.00	2.13	3.00	.64	16			
C3A x 2-7/16	12" - 14"	243564	2.44	6.69	2.75	3.00	.64	19.50			
C3A x 3	12" - 20"	243565	3.00	6.88	2.88	3.00	.77	26			

FEATURES/BENEFITS PAGE G2-3	NOMENCLATURE PAGE G2-11	SELECTION PAGE G2-81	RELATED PRODUCTS PAGE G2-152
--------------------------------	----------------------------	-------------------------	---------------------------------



Screw Conveyor Shaft Mount Speed Reducers SCXT3A- DOUBLE REDUCTION SCREW CONVEYOR DRIVES

SCXT205 Accessories

Description	NEMA Motor Frame	Screw Dia.	Part No.	Weight
M316 Standard Motor Mount	56T thru 210T	6" - 16"	353069	44
M316/250T Special Motor Mount ■ ♣	250T	6" - 16"	353070	44
M320L Long Motor Mount	56T thru 210T	18" - 20"	272627	56
SCXT3-D SCD Reducer Belt Guard	56T thru 210T	-	243416	40
SCXT3-D SCD Reducer Belt Guard for Long Motor Mount	56T thru 210T	-	243154	48
SCXT3A Cooling Fan Assembly	-	-	243581	3
SCXT3A Auxiliary Seal Kit ♥	-	-	243582	5

SCXT3A Motor Mount Assembly Dimensions

Motor Mount	E ◆		V-Belt Drive Center Distances for Various NEMA Motor Frames							
			"56,140"		180		210		250	
	Min.	Max.	Min.	Max.	Min.	Max.	Min.	Max.	Min.	Max.
M316	13.8	18.0	15.8	19.3	16.8	20.3	17.6	21.0	18.6	22.0
M320L	19.8	24.0	21.8	25.3	22.8	26.3	23.6	27.0	-	-

† Complete drive consists of reducer, CEMA drive shaft and key, and adapter assembly. Drive is shipped unassembled.

- ♣ AC adjustable packing adapter furnished if specified. C-style adapter is standard.
- ◆ Provides for V-Belt adjustment.
- ♣ Drawing dimensions are noted as **.
- ♥ See page G2-201 for drill and tap information required to mount to reducer.

▲ Includes adapter, necessary mounting bolts, and seal retainer. Both lip type and braided type seals included for customer's choice of application.

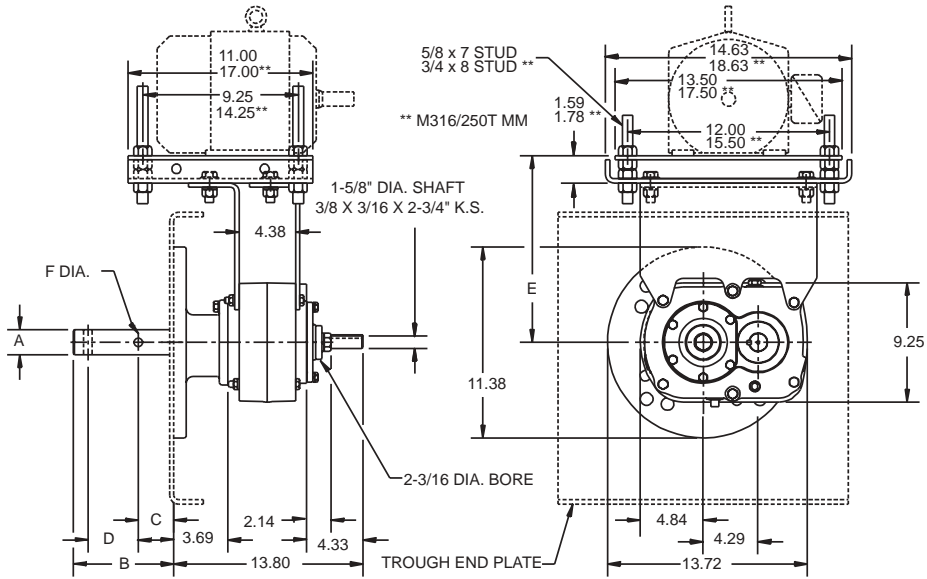
- ★ CEMA drive shaft and key is furnished unless otherwise specified. See pages thru G2-120 thru G2-122 for optional drive shafts available from DODGE.
- DODGE standard belt guards will not fit with this motor mount.

FEATURES/BENEFITS PAGE G2-3	NOMENCLATURE PAGE G2-11	SELECTION PAGE G2-81	RELATED PRODUCTS PAGE G2-152
--------------------------------	----------------------------	-------------------------	---------------------------------



SELECTION/DIMENSIONS

Screw Conveyor Shaft Mount Speed Reducers SCXT305A - SINGLE REDUCTION SCREW CONVEYOR DRIVES



SCXT305A Screw Conveyor Drive †

Reducers				
Size	Part No.	AGMA Code	Ratio	Weight
SCXT305A	253159	203S05	5.60	86

CEMA Drive Shafts ★									Adapter Assembly ▲		
Drive Shaft	Screw Dia.	Part No.	A	B	C	D	F Dia.	Weight	Size	Part No.	Weight
C3A x 1-1/2	9"	243562	1.50	6.00	2.13	3	.52	15	C3 AC3B †	353047 356163	29 27
C3A x 2	9" - 12"	243563	2.00	6.00	2.13	3	.64	16			
C3A x 2-7/16	12" - 14"	243564	2.44	6.69	2.75	3	.64	19.5			
C3A x 3	12" - 20"	243565	3.00	6.88	2.88	3	.77	26			

FEATURES/BENEFITS PAGE G2-3	NOMENCLATURE PAGE G2-11	SELECTION PAGE G2-81	RELATED PRODUCTS PAGE G2-152
--------------------------------	----------------------------	-------------------------	---------------------------------



Screw Conveyor Shaft Mount Speed Reducers SCXT305A - SINGLE REDUCTION SCREW CONVEYOR DRIVES

SCXT305A Accessories

Description	NEMA Motor Frame	Screw Dia.	Part No.	Weight
M316 Standard Motor Mount	56T thru 210T	6'-16"	353069	44
M316/250T Special Motor Mount ♣ ■	250T	6"-16"	353070	44
M320L Long Motor Mount	56T thru 210T	18"-20"	272627	56
SCXT3-S SCD Reducer Belt Guard	56T thru 210T	-	243418	40
SCXT3-S SCD Reducer Belt Guard for Long Motor Mount	56T thru 210T	-	243167	48
SCXT305A Cooling Fan Assembly	-	-	253188	3
SCXT305A Auxiliary Seal Kit ♥	-	-	253146	5

SCXT305A Motor Mount Assembly Dimensions

Motor Mount	E ◆		V-Belt Drive Center Distances for Various NEMA Motor Frames							
			56, 140		180		210		250	
	Min.	Max.	Min.	Max.	Min.	Max.	Min.	Max.	Min.	Max.
M316	13.8	18.0	18.2	21.6	19.2	22.6	19.5	23.4	20.9	24.4
M320L	19.8	24.0	24.2	27.6	25.2	28.6	25.9	29.4	-	-

† Complete drive consists of reducer, CEMA drive shaft and key, and adapter assembly. Drive is shipped unassembled.

- ♣ AC adjustable packing adapter furnished if specified. C-style adapter is standard.
- ◆ Provides for V-Belt adjustment.
- ♣ Drawing dimensions are noted as **.
- ♥ See page G2-201 for drill and tap information required to mount to reducer.

▲ Includes adapter, necessary mounting bolts, and seal retainer. Both lip type and braided type seals included for customer's choice of application.

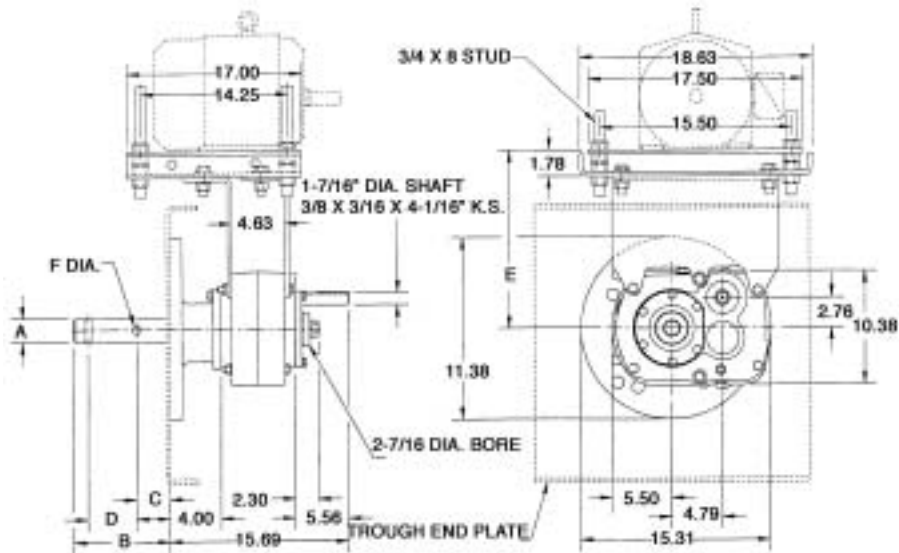
- ★ CEMA drive shaft and key is furnished unless otherwise specified. See pages thru G2-120 thru G2-122 for optional drive shafts available from DODGE.
- DODGE standard belt guards will not fit with this motor mount. Consult DODGE for special belt guard.
- Consult DODGE for center distances

FEATURES/BENEFITS PAGE G2-3	NOMENCLATURE PAGE G2-11	SELECTION PAGE G2-81	RELATED PRODUCTS PAGE G2-152
--------------------------------	----------------------------	-------------------------	---------------------------------



SELECTION/DIMENSIONS

Screw Conveyor Shaft Mount Speed Reducers SCXT4A - DOUBLE REDUCTION SCREW CONVEYOR DRIVES



SCXT4A Screw Conveyor Drive †

Reducers				
Size	Part No.	AGMA Code	Ratio	Weight
SCXT409A	244549	207D09	9.67	139
SCXT415A	244550	207D15	15.13	139
SCXT425A	244551	207D25	24.38	139

CEMA Drive Shafts ★									Adapter Assembly ▲		
Drive Shaft	Screw Dia.	Part No.	A	B	C	D	F Dia.	Weight	Size	Part No.	Weight
C4A x 1-1/2	9"	244594	1.50	6.00	2.13	3	.52	19	C4 AC4 †	354121 356149	33 31
C4A x 2	9" - 12"	244595	2.00	6.00	2.13	3	.64	20.8			
C4A x 2-7/16	12" - 14"	244596	2.44	6.69	2.75	3	.64	24.3			
C4A x 3	12" - 20"	244597	3.00	6.88	2.88	3	.77	29.2			
C4A x 3-7/16	18" - 24"	244598	3.44	9.13	3.88	4	.89	39.3			



Screw Conveyor Shaft Mount Speed Reducers SCXT4A - DOUBLE REDUCTION SCREW CONVEYOR DRIVES

SCXT4A Accessories

Description	NEMA Motor Frame	Screw Dia.	Part No.	Weight
M418 Standard Motor Mount	140T thru 280T	9"-18"	354069	86
M418/320T Motor Mount ♣ ■	140T thru 320T	9"-18"	354028	90
M424L Long Motor Mount	140T thru 280T	20"-24"	272628	100
SCXT4-D SCD Reducer Belt Guard	140T thru 280T	-	244489	44
SCXT4-D SCD Reducer Belt Guard for Long Motor Mount	140T thru 280T	-	244152	53
SCXT4A Cooling Fan Assembly	-	-	272594	3
SCXT4A Auxiliary Seal Kit ♥	-	-	244677	5

SCXT4A Motor Mount Assembly Dimensions

Motor Mount	E ◆		V-Belt Drive Center Distances for Various NEMA Motor Frames											
			56, 140		180		210		250		280		320	
	Min.	Max.	Min.	Max.	Min.	Max.	Min.	Max.	Min.	Max.	Min.	Max.	Min.	Max.
M418	15.3	20.1	16.9	21.0	17.9	22.0	18.6	22.7	19.6	23.7	20.4	24.5	21.4	25.4
M424L	21.3	26.1	23.2	27.0	24.2	28.0	24.9	28.6	25.9	29.6	26.7	30.4		

† Complete drive consists of reducer, CEMA drive shaft and key, and adapter assembly. Drive is shipped unassembled.

♣ AC adjustable packing adapter furnished if specified. C-style adapter is standard.

◆ Provides for V-Belt adjustment.

♣ Made to order

♥ See page G2-201 for drill and tap information required to mount to reducer.

▲ Includes adapter, necessary mounting bolts, and seal retainer. Both lip type and braided type seals included for customer's choice of application.

★ CEMA drive shaft and key is furnished unless otherwise specified. See pages thru G2-120 thru G2-122 for optional drive shafts available from DODGE.

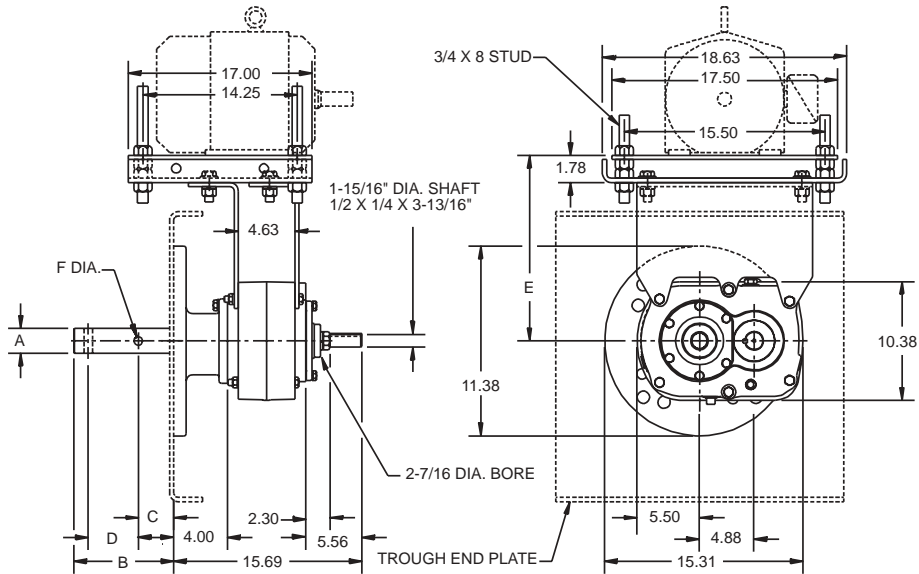
■ DODGE standard belt guards will not fit with this motor mount. Consult DODGE for special belt guard.

FEATURES/BENEFITS PAGE G2-3	NOMENCLATURE PAGE G2-11	SELECTION PAGE G2-81	RELATED PRODUCTS PAGE G2-152
--------------------------------	----------------------------	-------------------------	---------------------------------



SELECTION/DIMENSIONS

Screw Conveyor Shaft Mount Speed Reducers SCXT405A - SINGLE REDUCTION SCREW CONVEYOR DRIVES



SCXT405A Screw conveyor Drive †

Reducers				
Size	Part No.	AGMA Code	Ratio	Weight
SCXT405A	254208	207S05	5.65	122

CEMA Drive Shafts ★									Adapter Assembly ▲		
Drive Shaft	Screw Dia.	Part No.	A	B	C	D	F Dia.	Weight	Size	Part No.	Weight
C4 x 1-1/2	9"	244594	1.50	6.00	2.13	3.00	.52	19	C4 AC4 †	354121 356149	33 31
C4 x 2	9" - 12"	244595	2.00	6.00	2.13	3.00	.64	20.80			
C4 x 2-7/16	12" - 14"	244596	2.44	6.69	2.75	3.00	.64	24.30			
C4 x 3	12" - 20"	244597	3.00	6.88	2.88	3.00	.77	29.20			
C4 x 3-7/16	18" - 24"	244598	3.44	9.13	3.88	4.00	.89	39.30			



Screw Conveyor Shaft Mount Speed Reducers SCXT405A- SINGLE REDUCTION SCREW CONVEYOR DRIVES

SCXT405A Accessories

Description	NEMA Motor Frame	Screw Dia.	Part No.	Weight
M418 Standard Motor Mount	140T thru 280T	9"-18"	354069	86
M418/320T Motor Mount ■ ♣	140T thru 320T	9"-18"	354028	90
M424L Long Motor Mount	140T thru 280T	20"-24"	272628	100
SCXT4-S SCD Reducer Belt Guard	140T thru 280T	-	244491	50
SCXT4-S SCD Reducer Belt Guard for Long Motor Mount	140T thru 280T	-	244167	60
SCXT405A Cooling Fan Assembly	-	-	254268	3
SCXT405A Auxiliary Seal Kit ♥	-	-	254146	5

SCXT405A Motor Mount Assembly Dimensions

Motor Mount	E ◆		V-Belt Drive Center Distances for Various NEMA Motor Frames											
			56, 140		180		210		250		280		320	
	Min.	Max.	Min.	Max.	Min.	Max.	Min.	Max.	Min.	Max.	Min.	Max.	Min.	Max.
M418	15.3	20.1	19.6	23.7	20.6	24.7	21.4	25.5	22.4	26.5	23.0	27.2	21.4	25.4
M424L	21.3	26.1	25.9	29.7	26.9	30.7	27.7	31.4	28.7	32.3	29.4	33.2		

† Complete drive consists of reducer, CEMA drive shaft and key, and adapter assembly. Drive is shipped unassembled.

♣ AC adjustable packing adapter furnished if specified. C-style adapter is standard.

◆ Provides for V-Belt adjustment.

♣ Made to order

♥ See page G2-201 for drill and tap information required to mount to reducer.

▲ Includes adapter, necessary mounting bolts, and seal retainer. Both lip type and braided type seals included for customer's choice of application.

★ CEMA drive shaft and key is furnished unless otherwise specified. See pages thru G2-120 thru G2-122 for optional drive shafts available from DODGE.

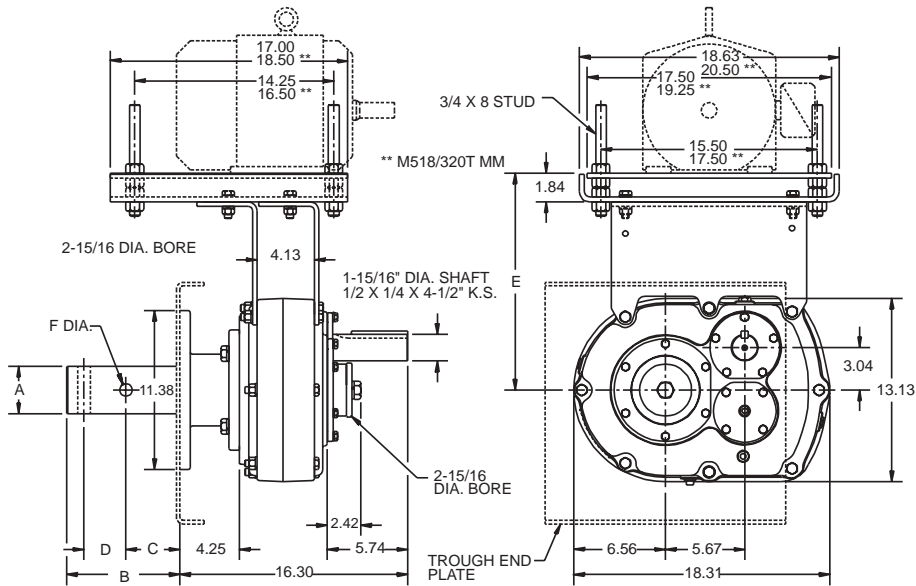
■ DODGE standard belt guards will not fit with this motor mount. Consult DODGE for special belt guard.

FEATURES/BENEFITS PAGE G2-3	NOMENCLATURE PAGE G2-11	SELECTION PAGE G2-81	RELATED PRODUCTS PAGE G2-152
--------------------------------	----------------------------	-------------------------	---------------------------------



SELECTION/DIMENSIONS

Screw Conveyor Shaft Mount Speed Reducers SCXT5B - DOUBLE REDUCTION SCREW CONVEYOR DRIVES



SCXT5B Screw Conveyor Drives †

Reducers				
Size	Part No.	AGMA Code	Ratio	Weight
SCXT509B	245574	215D09	8.95	207
SCXT515B	245575	215D15	15.40	207
SCXT525B	245576	215D25	25.56	207

CEMA Drive Shafts ★									Adapter Assembly ▲		
Drive Shaft	Screw Dia.	Part No.	A	B	C	D	F Dia.	Weight	Size	Part No.	Weight
C5B x 2	9"	355175	2.00	6.00	2.13	3.00	.64	29.4	C5 AC5 †	355072 356158	43 43
C5B x 2-7/16	9" - 12"	355176	2.44	6.69	2.75	3.00	.64	33			
C5B x 3	12" - 14"	355177	3.00	6.88	2.88	3.00	.77	37.9			
C5B x 3-7/16	12" - 20"	355178	3.44	9.13	3.88	4.00	.89	48.3			



Screw Conveyor Shaft Mount Speed Reducers SCXT5B - DOUBLE REDUCTION SCREW CONVEYOR DRIVES

SCXT5B Accessories

Description	NEMA Motor Frame	Screw Dia.	Part No.	Weight
M518 Standard Motor Mount	140T thru 280T	9"-18"	355169	82
M518/320T Special Motor Mount ♣ ■	320T	9"-18"	355168	82
M524L Long Motor Mount	140T thru 280T	20"-24"	272629	110
SCXT5-D SCD Reducer Belt Guard	140T thru 280T	-	245495	45
SCXT5-D SCD Reducer Belt Guard for Long Motor Mount	140T thru 280T	-	245103	54
SCXT5B Cooling Fan Assembly	-	-	272369	3
SCXT5B Auxiliary Seal Kit ♥	-	-	245637	6

SCXT5B Motor Mount Assembly Dimensions

Motor Mount	E ◆		V-Belt Drive Center Distances for Various NEMA Motor Frames											
			56, 140		180		210		250		280		320	
	Min.	Max.	Min.	Max.	Min.	Max.	Min.	Max.	Min.	Max.	Min.	Max.	Min.	Max.
M518	15.3	20.1	16.6	20.7	17.6	21.7	18.4	22.4	19.4	23.4	20.0	24.2	21.1	25.20
M524L	21.3	26.1	22.9	26.6	23.9	27.6	24.7	28.4	25.7	29.4	26.4	30.1	-	-

† Complete drive consists of reducer, CEMA drive shaft and key, and adapter assembly. Drive is shipped unassembled.

♣ AC adjustable packing adapter furnished if specified. C-style adapter is standard.

◆ Provides for V-Belt adjustment.

♣ Made to order. Drawing dimensions are noted as **.

♥ See page G2-201 for drill and tap information required to mount to reducer.

▲ Includes adapter, necessary mounting bolts, and seal retainer. Both lip type and braided type seals included for customer's choice of application.

★ CEMA drive shaft and key is furnished unless otherwise specified. See pages thru G2-120 thru G2-122 for optional drive shafts available from DODGE.

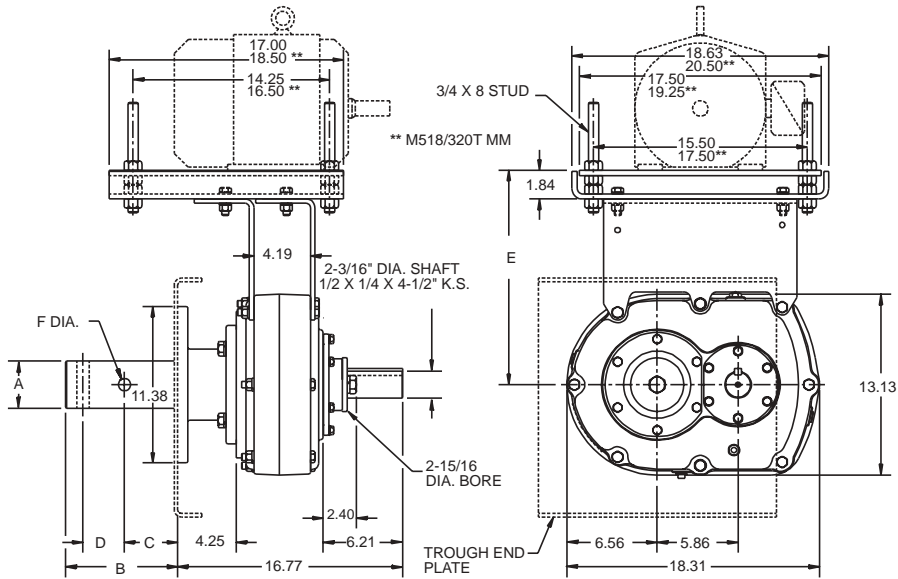
■ DODGE standard belt guards will not fit with this motor mount. Consult DODGE for special belt guard.

FEATURES/BENEFITS PAGE G2-3	NOMENCLATURE PAGE G2-11	SELECTION PAGE G2-81	RELATED PRODUCTS PAGE G2-152
--------------------------------	----------------------------	-------------------------	---------------------------------



SELECTION/DIMENSIONS

Screw Conveyor Shaft Mount Speed Reducers SCXT505A - SINGLE REDUCTION SCREW CONVEYOR DRIVES



SCXT505A Screw Conveyor Drive †

Reducers				
Size	Part No.	AGMA Code	Ratio	Weight
SCXT505A	255208	215S05	5.67	182

CEMA Drive Shafts ★									Adapter Assembly ▲		
Drive Shaft	Screw Dia.	Part No.	A	B	C	D	F Dia.	Weight	Size	Part No.	Weight
C5B x 2	9" - 12"	355175	2.00	6.00	2.13	3.00	.64	29.40	C5 AC5 †	355072 356158	43 43
C5B x 2-7/16	12" - 14"	355176	2.44	6.69	2.75	3.00	.64	33			
C5B x 3	12" - 20"	355177	3.00	6.88	2.88	3.00	.77	37.90			
C5B x 3-7/16	18" - 24"	355178	3.44	9.13	3.88	4.00	.89	48.30			



Screw Conveyor Shaft Mount Speed Reducers SCXT505A - SINGLE REDUCTION SCREW CONVEYOR DRIVES

SCXT505A Accessories

Description	NEMA Motor Frame	Screw Dia.	Part No.	Weight
M518 Standard Motor Mount	140T thru 280T	9"-18"	355169	82
M518/320T Special Motor Mount ♣ ■	320T	9"-18"	355168	82
M524L Long Motor Mount	140T thru 280T	20"-24"	272629	110
SCXT5-S SCD Reducer Belt Guard	140T thru 280T	-	245497	70
SCXT5-S SCD Reducer Belt Guard for Long Motor Mount	140T thru 280T	-	245015	84
SCXT505A Cooling Fan Assembly	-	-	255231	3
SCXT505A Auxiliary Seal Kit ♥	-	-	255148	6

SCXT505A Motor Mount Assembly Dimensions

SCD Motor Mount	E ◆		V-Belt Drive Center Distances for Various NEMA Motor Frames											
			56, 140		180		210		250		280		320	
	Min.	Max.	Min.	Max.	Min.	Max.	Min.	Max.	Min.	Max.	Min.	Max.	Min.	Max.
M518	15.3	20.1	19.7	23.8	20.7	24.7	21.4	25.5	22.4	26.5	23.0	27.2	24.2	28.2
M524L	21.3	26.1	25.9	29.7	26.9	30.7	27.7	31.4	28.7	32.4	29.5	33.2	-	-

† Complete drive consists of reducer, CEMA drive shaft and key, and adapter assembly. Drive is shipped unassembled.

- ♣ AC adjustable packing adapter furnished if specified. C-style adapter is standard.
- ◆ Provides for V-Belt adjustment.
- ♣ Made to order. Drawing dimensions are noted as **.
- ♥ See page G2-201 for drill and tap information required to mount to reducer.

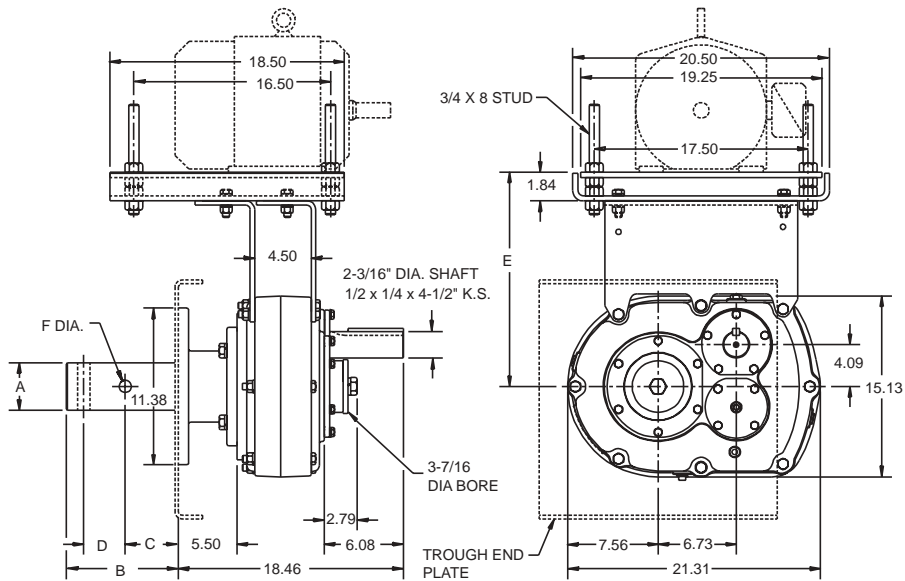
- ▲ Includes adapter, necessary mounting bolts, and seal retainer. Both lip type and braided type seals included for customer's choice of application.
- ★ CEMA drive shaft and key is furnished unless otherwise specified. See pages thru G2-120 thru G2-122 for optional drive shafts available from DODGE.
- DODGE standard belt guards will not fit with this motor mount. Consult DODGE for special belt guard.

FEATURES/BENEFITS PAGE G2-3	NOMENCLATURE PAGE G2-11	SELECTION PAGE G2-81	RELATED PRODUCTS PAGE G2-152
--------------------------------	----------------------------	-------------------------	---------------------------------



SELECTION/DIMENSIONS

Screw Conveyor Shaft Mount Speed Reducers SCXT6 - DOUBLE REDUCTION SCREW CONVEYOR DRIVES



SCXT6 Screw Conveyor Drive †

Reducers				
Size	Part No.	AGMA Code	Ratio	Weight
SCXT609	246480	307D09	9.20	285
SCXT615	356057	307D15	15.33	285
SCXT625	356058	307D25	25.13	285

CEMA Drive Shafts ★									Adapter Assembly ▲		
Drive Shaft	Screw Dia.	Part No.	A	B	C	D	F Dia.	Weight	Size	Part No.	Weight
C6 x 2-7/16	12" - 14"	356042	2.44	6.69	2.75	3.00	.64	47.70	C6	356055	56
C6 x 3	12" - 20"	356043	3.00	6.88	2.88	3.00	.77	52.70	AC6 ♣	356154	56
C6 x 3-7/16	18" - 24"	356044	3.44	9.13	3.88	4.00	.89	63			



Screw Conveyor Shaft Mount Speed Reducers SCXT6 - DOUBLE REDUCTION SCREW CONVEYOR DRIVES

SCXT6 Accessories

Description	NEMA Motor Frame	Screw Dia.	Part No.	Weight
M620 Standard Motor Mount	140T thru 320T	12"-20"	356069	105
M624L Long Motor Mount	140T thru 320T	24"	272630	122
SCXT6-D SCD Reducer Belt Guard	140T thru 320T	-	246476	60
SCXT6-D SCD Reducer Belt Guard for Long Motor Mount	140T thru 320T	-	246148	72
SCXT6 Cooling Fan Assembly	-	-	272325	3
SCXT6 Auxiliary Seal Kit	-	-	272726	7

SCXT6 Motor Mount Assembly Dimensions

Motor Mount	E ◆		V-Belt Drive Center Distances for Various NEMA Motor Frames											
			56, 140		180		210		250		280		320	
	Min.	Max.	Min.	Max.	Min.	Max.	Min.	Max.	Min.	Max.	Min.	Max.	Min.	Max.
M620	16.7	21.4	17.0	21.0	18.0	22.0	18.8	22.8	19.7	23.8	20.5	24.5	21.5	25.5
M624L	22.7	27.4	23.2	27.0	24.2	27.9	24.9	28.7	25.9	29.7	26.7	30.5	27.6	31.4

† Complete drive consists of reducer, CEMA drive shaft and key, and adapter assembly. Drive is shipped unassembled.

- ◆ AC adjustable packing adapter furnished if specified. C-style adapter is standard.
- ◆ Provides for V-Belt adjustment.

▲ Includes adapter, necessary mounting bolts, and seal retainer. Both lip type and braided type seals included for customer's choice of application.

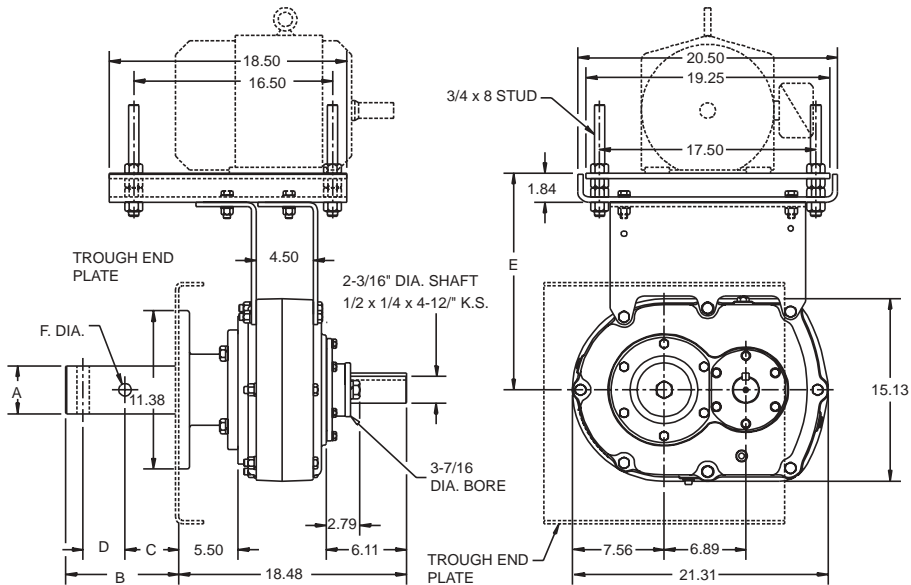
- ★ CEMA drive shaft and key is furnished unless otherwise specified. See pages G2-120 thru G2-122 for optional drive shafts available from DODGE.

FEATURES/BENEFITS PAGE G2-3	NOMENCLATURE PAGE G2-11	SELECTION PAGE G2-81	RELATED PRODUCTS PAGE G2-152
--------------------------------	----------------------------	-------------------------	---------------------------------



SELECTION/DIMENSIONS

Screw Conveyor Shaft Mount Speed Reducers SCXT605 - SINGLE REDUCTION SCREW CONVEYOR DRIVES



SCXT605 Screw Conveyor Drive †

Reducers				
Size	Part No.	AGMA Code	Ratio	Weight
SCXT605	356285	307S05	5.67	251

CEMA Drive Shafts ★									Adapter Assembly ▲		
Drive Shaft	Screw Dia.	Part No.	A	B	C	D	F Dia.	Weight	Size	Part No.	Weight
C6 x 2-7/16	12" - 14"	356042	2.44	6.69	2.75	3.00	.64	47.70	C6	356055	56
C6 x 3	12" - 20"	356043	3.00	6.88	2.88	3.00	.77	52.70	AC6 †	356154	56
C6 x 3-7/16	18" - 24"	356044	3.44	9.13	3.88	4.00	.89	63			

SELECTION/DIMENSIONS



Screw Conveyor Shaft Mount Speed Reducers SCXT605 - SINGLE REDUCTION SCREW CONVEYOR DRIVES

SCXT605 Accessories

Description	NEMA Motor Frame	Screw Dia.	Part No.	Weight
M620 Standard Motor Mount	140T thru 320T	12"-20"	356069	105
M624L Long Motor Mount	140T thru 320T	24"	272630	122
SCXT6-S SCD Reducer Belt Guard	140T thru 320T	-	246478	77
SCXT6-S SCD Reducer Belt Guard for Long Motor Mount	140T thru 320T	-	246142	92
SCXT605 Cooling Fan Assembly	-	-	272681	3
SCXT6 Auxiliary Seal Kit	-	-	272726	7

SCXT605 Motor Mount Assembly Dimensions

Motor Mount	E ◆		V-Belt Drive Center Distances for Various NEMA Motor Frames											
			56, 140		180		210		250		280		320	
	Min.	Max.	Min.	Max.	Min.	Max.	Min.	Max.	Min.	Max.	Min.	Max.	Min.	Max.
M620	16.7	21.4	21.1	25.1	22.1	26.1	22.8	26.8	23.8	27.9	24.6	28.6	25.6	29.6
M624L	22.7	27.4	27.2	31.1	28.2	32.1	29.0	32.8	30.0	33.8	30.7	34.6	31.7	35.5

† Complete drive consists of reducer, CEMA drive shaft and key, and adapter assembly. Drive is shipped unassembled.

- ◆ AC adjustable packing adapter furnished if specified. C-style adapter is standard.
- ◆ Provides for V-Belt adjustment.

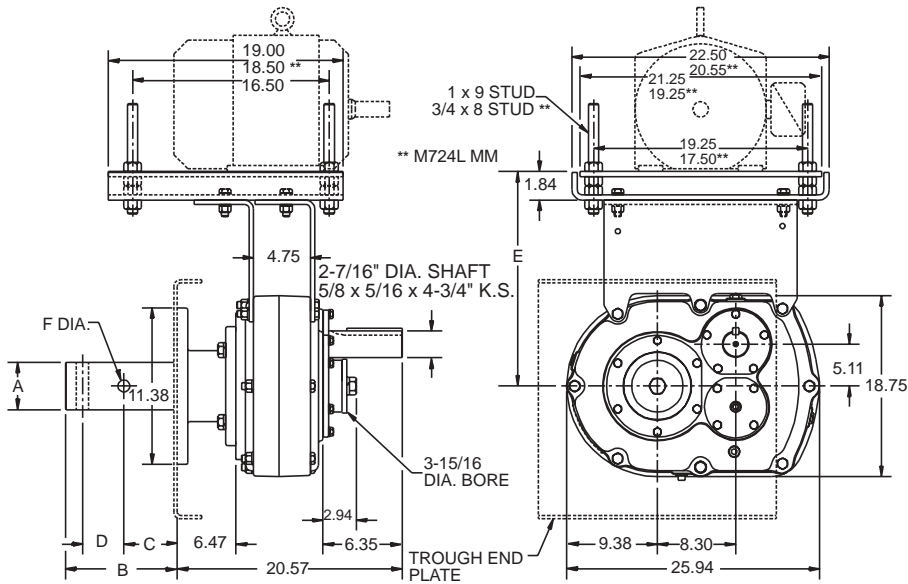
- ▲ Includes adapter, necessary mounting bolts, and seal retainer. Both lip type and braided type seals included for customer's choice of application.
- ★ CEMA drive shaft and key is furnished unless otherwise specified. See pages G2-120 thru G2-122 for optional drive shafts available from DODGE.

FEATURES/BENEFITS PAGE G2-3	NOMENCLATURE PAGE G2-11	SELECTION PAGE G2-81	RELATED PRODUCTS PAGE G2-152
--------------------------------	----------------------------	-------------------------	---------------------------------



SELECTION/DIMENSIONS

Screw Conveyor Shaft Mount Speed Reducers SCXT7 - DOUBLE REDUCTION SCREW CONVEYOR DRIVES



SCXT7 Screw Conveyor Drive †

Reducers				
Size	Part No.	AGMA Code	Ratio	Weight
SCXT709	247480	315D09	9.61	462
SCXT715	356256	315D15	15.23	462
SCXT725	356257	315D25	24.59	462

CEMA Drive Shafts ★									Adapter Assembly ▲		
Drive Shaft	Screw Dia.	Part No.	A	B	C	D	F Dia.	Weight	Size	Part No.	Weight
C7 x 2-7/16	12" - 14"	356182	2.44	6.69	2.75	3.00	.64	58	C7 AC7 ▲	356187	72
C7 x 3	12" - 20"	356183	3.00	6.88	2.88	3.00	.77	70		356192	72
C7 x 3-7/16	18" - 24"	356184	3.44	9.13	3.88	4.00	.89	80.30			

FEATURES/BENEFITS PAGE G2-3	NOMENCLATURE PAGE G2-11	SELECTION PAGE G2-81	RELATED PRODUCTS PAGE G2-152
--------------------------------	----------------------------	-------------------------	---------------------------------



Screw Conveyor Shaft Mount Speed Reducers SCXT7 - DOUBLE REDUCTION SCREW CONVEYOR DRIVES

SCXT7 Accessories

Description	NEMA Motor Frame	Screw Dia.	Part No.	Weight
M720 Standard Motor Mount	140T thru 360T	12"-20"	356269	106
M724L Long Motor Mount v	140T thru 320T	24"	272631	130
SCXT7-D SCD Reducer Belt Guard	140T thru 360T	-	247474	75
SCXT7-D SCD Reducer Belt Guard for Long Motor Mount	140T thru 320T	-	247153	90
SCXT7 Cooling Fan Assembly	-	-	272326	6
SCXT7 Auxiliary Seal Kit	-	-	272727	8

SCXT7 Motor Mount Assembly Dimensions

Motor Mount	E ◆		V-Belt Drive Center Distances for Various NEMA Motor Frames													
			"56,140"		180		210		250		280		320		360	
	Min.	Max.	Min.	Max.	Min.	Max.	Min.	Max.	Min.	Max.	Min.	Max.	Min.	Max.	Min.	Max.
M720	17.5	21.7	17.1	20.5	18.1	21.5	18.8	22.2	19.8	23.2	20.5	24.0	21.5	25.0	22.5	26.0
M724L	23.5	27.7	22.4	26.1	23.3	27.1	24.1	27.8	25.0	28.8	25.8	29.5	26.8	30.5	---	---

† Complete drive consists of reducer, CEMA drive shaft and key, and adapter assembly. Drive is shipped unassembled.

◆ AC adjustable packing adapter furnished if specified. C-style adapter is standard.

◆ Provides for V-Belt adjustment.

▲ Includes adapter, necessary mounting bolts, and seal retainer. Both lip type and braided type seals included for customer's choice of application.

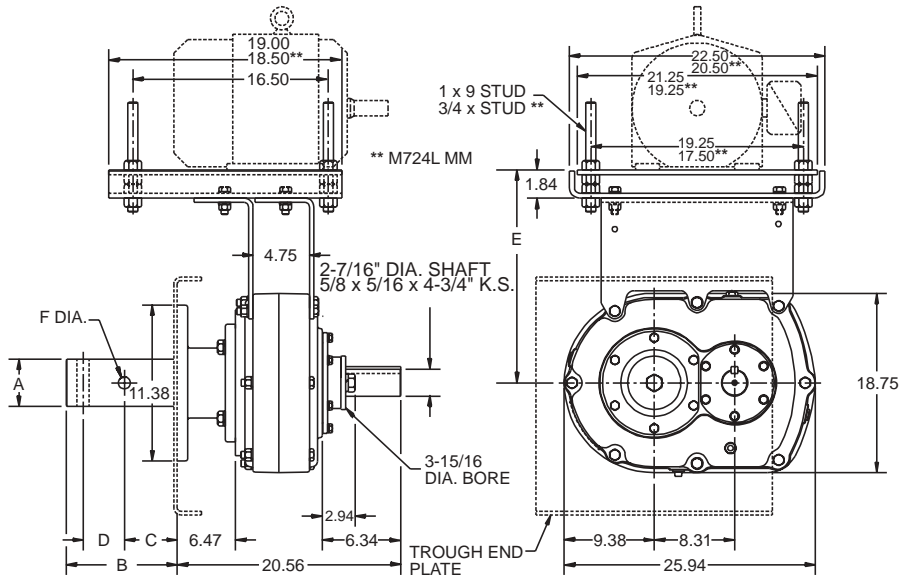
★ CEMA drive shaft and key is furnished unless otherwise specified. See pages G2-120 thru G2-122 for optional drive shafts available from DODGE.

FEATURES/BENEFITS PAGE G2-3	NOMENCLATURE PAGE G2-11	SELECTION PAGE G2-81	RELATED PRODUCTS PAGE G2-152
--------------------------------	----------------------------	-------------------------	---------------------------------



SELECTION/DIMENSIONS

Screw Conveyor Shaft Mount Speed Reducers SCXT705 - SINGLE REDUCTION SCREW CONVEYOR DRIVES



SCXT705 Screw Conveyor Drive †

Reducers				
Size	Part No.	AGMA Code	Ratio	Weight
SCXT705	356295	315S05	5.36	410

CEMA Drive Shafts ★									Adapter Assembly ▲		
Drive Shaft	Screw Dia.	Part No.	A	B	C	D	F Dia.	Weight	Size	Part No.	Weight
C7 x 2-7/16	12" - 14"	356182	2.44	6.69	2.75	3.00	.64	58	C7 AC7 †	356187 356192	72 72
C7 x 3	12" - 20"	356183	3.00	6.88	2.88	3.00	.77	70			
C7 x 3-7/16	18" - 24"	356184	3.44	9.13	3.88	4.00	.89	80.30			



Screw Conveyor Shaft Mount Speed Reducers SCXT705 - SINGLE REDUCTION SCREW CONVEYOR DRIVES

SCXT705 Accessories

Description	NEMA Motor Frame	Screw Dia.	Part No.	Weight
M720 Standard Motor Mount	140T thru 360T	12"-20"	356269	106
M724L Long Motor Mount †	140T thru 320T	24"	272631	130
SCXT7-S SCD Reducer Belt Guard	140T thru 360T	-	247476	84
SCXT7-S SCD Reducer Belt Guard for Long Motor Mount	140T thru 320T	-	247149	100
SCXT705 Cooling Fan Assembly	-	-	272685	6
SCXT705 Auxiliary Seal Kit	-	-	272727	8

SCXT705 Motor Mount Assembly Dimensions

Motor Mount	E ◆		V-Belt Drive Center Distances for Various NEMA Motor Frames													
			56, 140		180		210		250		280		320		360	
	Min.	Max.	Min.	Max.	Min.	Max.	Min.	Max.	Min.	Max.	Min.	Max.	Min.	Max.	Min.	Max.
M720	17.5	21.7	22.1	25.6	23.1	26.5	23.8	27.3	24.8	28.3	25.6	29.0	26.6	30.0	27.5	31.0
M724L	23.5	27.7	27.3	31.1	28.3	32.1	29.1	32.9	30.1	33.9	30.8	34.7	31.8	35.6	-	-

† Complete drive consists of reducer, CEMA drive shaft and key, and adapter assembly. Drive is shipped unassembled.

♣ AC adjustable packing adapter furnished if specified. C-style adapter is standard.

◆ Provides for V-Belt adjustment.

♥ See page G2-201 for drill and tap information required to mount to reducer.

▲ Includes adapter, necessary mounting bolts, and seal retainer. Both lip type and braided type seals included for customer's choice of application.

★ CEMA drive shaft and key is furnished unless otherwise specified. See pages G2-120 thru G2-122 for optional drive shafts available from DODGE.

♣ Made to order. Drawing dimensions are noted as **.

FEATURES/BENEFITS PAGE G2-3	NOMENCLATURE PAGE G2-11	SELECTION PAGE G2-81	RELATED PRODUCTS PAGE G2-152
--------------------------------	----------------------------	-------------------------	---------------------------------

SELECTION/DIMENSIONS



Screw Conveyor Shaft Mount Speed Reducers SCXT8 - DOUBLE REDUCTION SCREW CONVEYOR DRIVES

SCXT8 Screw Conveyor Drive †

Reducers				
Size	Part No.	AGMA Code	Ratio	Weight
SCXT815	248464 ♣	407D15	15.08	633
SCXT825	248465 ♣	407D25	24.62	633

CEMA Drive Shafts ★									Adapter Assembly ▲		
Drive Shaft	Screw Dia.	Part No.	A	B	C	D	F Dia.	Weight	Size	Part No.	Weight
C8 X 3	12" - 20"	248473 ♣	3.00	9.88	2.88	3.00	.77	88	C8 ♣	248470 ♣	90
C8 X 3-7/16	18" - 24"	248474 ♣	3.44	13.13	3.88	4.00	.89	100			

SCXT8 Accessories

Description	NEMA Motor Frame	Screw Dia.	Part No.	Weight
M824L Long Motor Mount ♣	210T thru 360T	12" - 24"	248469	163
SCXT8-D SCD Reducer Belt Guard ♣	210T thru 360T	---	248477	113
SCXT8 Cooling Fan Assembly	---	---	272327	9
SCXT8 Auxiliary Seal Kit ♣	---	---	248484	10

SCXT8 Motor Mount Assembly Dimensions

Motor Mount	E ◆		V-Belt Drive Center Distances for Various NEMA Motor Frames													
			56, 140		180		210		250		280		320		360	
	Min.	Max.	Min.	Max.	Min.	Max.	Min.	Max.	Min.	Max.	Min.	Max.	Min.	Max.	Min.	Max.
M824	22.70	28.60					23.3	28.4	24.3	29.4	25.1	30.1	26.0	31.1	27.0	32.1

† Complete drive consists of reducer, CEMA drive shaft and key, and adapter assembly. Drive is shipped unassembled.

♣ AC adjustable packing adapter furnished if specified. C-style adapter is standard.

◆ Provides for V-Belt adjustment.

♥ See page G2-201 for drill and tap information required to mount to reducer.

▲ Includes adapter, necessary mounting bolts, and seal retainer. Both lip type and braided type seals included for customer's choice of application.

★ CEMA 3-hole drive shaft and key is furnished as standard. For other C8 drive shafts, consult DODGE.

♣ Made to order. Drawing dimensions are noted as **.

FEATURES/BENEFITS PAGE G2-3	NOMENCLATURE PAGE G2-11	SELECTION PAGE G2-81	RELATED PRODUCTS PAGE G2-152
--------------------------------	----------------------------	-------------------------	---------------------------------