

MODIFICATIONS/ACCESSORIES



TIGEAR-2 MOTOR ADAPTER KIT

TIGEAR-2 motor adapter kits are available to convert a separate shaft input reducer to a three-piece coupled input reducer. Kits listed at right include the motor adapter housing, three-piece coupling and all required mounting hardware.

TIGEAR-2 motor adapter kits cannot be used with the old Adaptable or Separate series TIGEAR reducers.

REDUCER SIZE	MOTOR FRAME				
	56C	140TC	180TC	210TC	250TC
13	1315MTR56	1315MTR14	N/A	N/A	N/A
15	1315MTR56	1315MTR14	N/A	N/A	N/A
17	1720MTR56	1720MTR14	N/A	N/A	N/A
20	1720MTR56	1720MTR14	N/A	N/A	N/A
23	2330MTR56	2330MTR14	2330MTR18	N/A	N/A
26	2330MTR56	2330MTR14	2330MTR18	N/A	N/A
30	2330MTR56	2330MTR14	2330MTR18	N/A	N/A
35	35MTR56	35MTR14	35MTR18	35MTR21	N/A
40	N/A	4047MTR14	4047MTR18	4047MTR21	4047MTR25
47	N/A	4047MTR14	4047MTR18	4047MTR21	4047MTR25



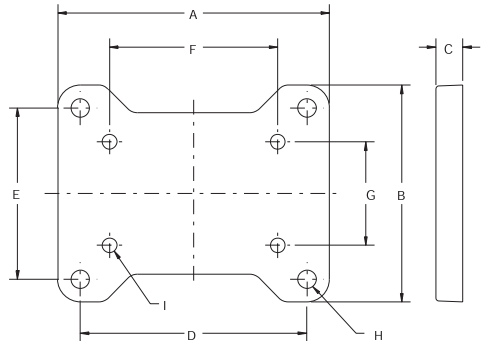
TIGEAR-2 BOLT-ON BASE KIT

All TIGEAR-2 reducers include top and bottom drilled and tapped mounting holes but do not include base. Each kit below includes the base and required mounting hardware.

Reducer Size	Standard Kit Number	Standard Spacer Kit Number ⁽¹⁾	E-Z KLEEN Kit Number	Stainless Steel ULTRA KLEEN Kit
13	13BASE	Not Required	13ZBASE	not available
15	15BASE	Not Required	15ZBASE	not available
17	17BASE	Not Required	17ZBASE	17SBASE
20	20BASE	Not Required	20ZBASE	not available
23 ⁽¹⁾	23BASE	2326SPACER	23ZBASE	23SBASE
26 ⁽¹⁾	26BASE	2326SPACER	26ZBASE	not available
30 ⁽¹⁾	30BASE	3035SPACER	30ZBASE	30SBASE
35 ⁽¹⁾	35BASE	3035SPACER	35ZBASE	35SBASE
40 ⁽¹⁾	40BASE	40SPACER	not available	not available
47	47BASE	Not Required	not available	not available

Note: Sizes 17 and 20 have slotted mounting holes

(1) If base is to be mounted on top of reducer, spacer kit listed above will also be required to allow clearance of base and motor adapter housing. Currently not available with E-Z KLEEN coating or stainless steel material.



SIZE	A	B	C	D	E	F	G	H	I
13	5.25	4.19	0.52	4.38	3.31	3.25	2	0.34	0.28
15	6.13	5.19	0.61	5.25	4.31	3.5	2.25	0.44	0.28
17	6.94	5.56	0.74	5.88	4.50	4.19	2.75	0.41	0.34
20	7.26	5.66	0.74	6.20	4.60	5.00	2.88	0.50	0.41
23	8.32	6.14	0.75	7.06	4.88	5.00	2.88	0.47	0.41
26	9.25	6.50	0.79	8.00	5.25	6.38	3.38	0.56	0.41
30	9.68	7.12	0.75	8.44	5.88	7.00	4.00	0.53	0.49
35	10.75	7.38	1.00	9.50	6.13	7.50	4.00	0.58	0.47
40	12.62	9.13	1.00	11.12	7.63	8.50	5.00	0.66	0.66
47	16.00	10.26	1.13	14.12	8.38	11.00	5.81	0.78	0.66

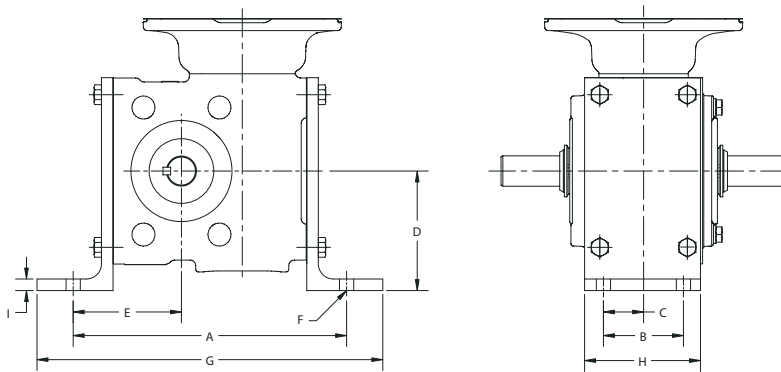
FEATURES/BENEFITS PAGE G4-2	SPECIFICATION PAGE G4-8	NOMENCLATURE PAGE G4-9	SELECTION/DIMENSIONS PAGE G4-16
--------------------------------	----------------------------	---------------------------	------------------------------------

MODIFICATIONS/ACCESSORIES



TIGEAR-2 J-MOUNT BASE KITS

J-mount kits allow the reducer to be “floor” mounted with the motor in a vertical (up) position. In this configuration the output shaft(s) is horizontal. Each kit includes the brackets and required mounting hardware.

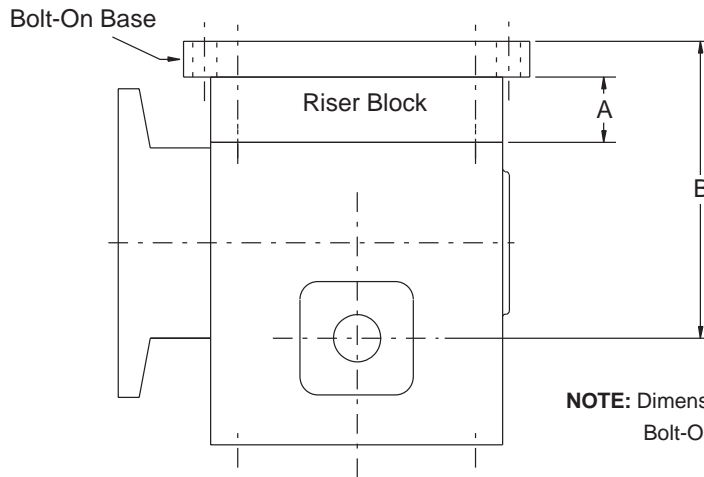


Reducer Size	Standard Kit Number	E-Z KLEEN Kit Number	A	B	C	D	E	F	G	H	I
13	13JMOUNT	13ZJMOUNT	6.88	2.00	1.00	2.95	2.71	0.34	7.76	2.88	0.25
15	15JMOUNT	15ZJMOUNT	7.98	2.50	1.25	3.50	3.12	0.41	9.48	3.38	0.31
17	17JMOUNT	17ZJMOUNT	8.35	2.50	1.25	3.50	3.24	0.41	9.85	3.56	0.38
20	20JMOUNT	20ZJMOUNT	8.97	2.63	1.32	3.94	3.55	0.47	11.35	3.75	0.38
23	23JMOUNT	23ZJMOUNT	9.88	2.88	1.44	4.06	3.75	0.50	10.88	4.12	0.38
26	26JMOUNT	26ZJMOUNT	11.48	3.13	1.57	4.75	4.43	0.53	13.36	4.25	0.50
30	30JMOUNT	30ZJMOUNT	11.88	4.00	2.00	5.62	4.75	0.56	13.02	5.06	0.38
35	35JMOUNT	35ZJMOUNT	13.50	4.00	2.00	5.50	5.45	0.56	15.57	5.50	0.38
40	40JMOUNT	not available	14.88	5.00	2.50	6.50	6.12	0.69	16.26	6.38	0.50
47	47JMOUNT	not available	17.51	5.81	2.91	7.75	7.19	0.69	18.89	7.19	0.50

TIGEAR-2 RISER BLOCK KITS

Riser blocks allow clearance over the motor eliminating the need to invert the reducer (worm under) when the application calls for a “ceiling” mount such as under a conveyor or other equipment. Riser blocks permit the reducer to be mounted in the most desirable position keeping the high speed shaft seal above the oil level. Experience shows that this position results in increased seal life and durability. Each kit includes the riser block and required mounting hardware.

Reducer Size	Standard Kit Number	E-Z KLEEN Kit Number	A	B
13	13RISER	13ZRISER	1.66	5.36
15	15RISER	15ZRISER	1.38	5.61
17	17RISER	17ZRISER	1.38	5.99
20	20RISER	20ZRISER	1.38	6.24
23	23RISER	23ZRISER	2.25	7.88
26	26RISER	26ZRISER	1.91	8.21
30	30RISER	30ZRISER	2.25	8.63
35	35RISER	35ZRISER	1.69	9.27
40	40RISER	not available	2.75	10.83
47	47RISER	not available	2.00	11.57



NOTE: Dimension B includes optional Bolt-On Base

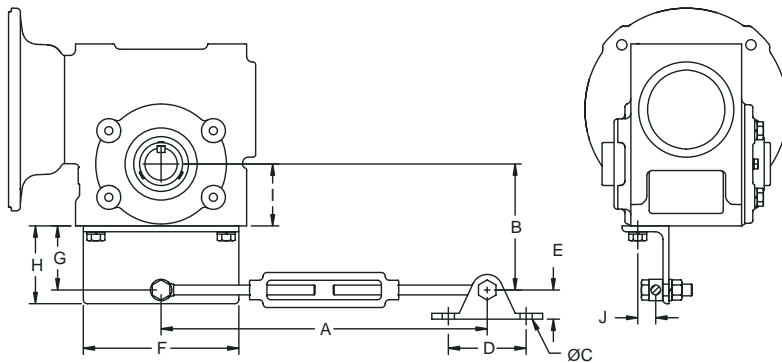
MODIFICATIONS/ACCESSORIES



TIGEAR-2 TIE ROD KIT

Tie Rod Kits are available for restraining Hollow Shaft Reducers. Each kit includes reducer mounting bracket, tie rods, turnbuckle, fulcrum and mounting hardware.

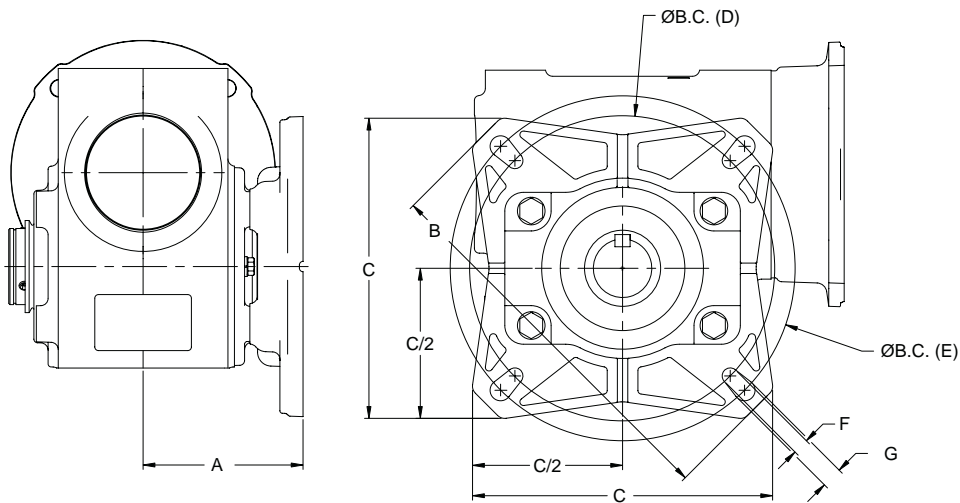
Reducer Case Size	Tie Rod Kit	Reducer Case Size	Tie Rod Kit
13	13TIEROD	26	26TIEROD
15	15TIEROD	30	30TIEROD
17	17TIEROD	35	35TIEROD
20	2023TIEROD	40	40TIEROD
23		47	47TIEROD



Size	A MIN - MAX	B	C	D	E	F	G	H	I	J
13	12.00 - 18.00	2.52	.041	1.75	0.75	4.00	0.81	1.25	1.71	0.37
15	12.00 - 18.00	2.68	0.41	1.75	0.75	4.20	0.81	1.25	1.87	0.49
17	12.00 - 18.00	4.05	0.41	1.75	0.75	5.00	2.06	2.50	1.99	0.59
20	14.7 - 17.7	3.55	0.39	2.50	0.94	5.88	1.31	1.75	2.24	0.53
23	14.7 - 17.7	3.81	0.39	2.50	0.94	5.88	1.31	1.75	2.50	0.53
26	14.7 - 17.7	4.18	0.39	2.50	0.94	7.24	1.31	1.75	2.87	0.75
30	14.7 - 17.7	5.75	0.39	2.50	0.94	8.00	2.50	3.00	3.25	0.72
35	14.7 - 17.7	6.49	0.39	2.50	0.94	8.50	2.50	3.00	3.99	0.84
40	19.5 - 25.5	7.69	0.45	3.00	1.06	9.88	3.25	4.00	4.44	1.09
47	19.5 - 25.5	9.56	0.45	3.00	1.06	12.38	4.25	5.00	5.31	1.03

TIGEAR-2 CAST OUTPUT FLANGE KIT

The Output Cast Flange Kit is used to mount Hollow Shaft reducers to a flat surface perpendicular to the output shaft. The flange may be substituted for a tie rod kit to restrain reactions. Each kit consists of a flange and required mounting hardware. The Output Flange kit can be mounted to either side of a hollow output reducer. When used with GRIP TIGHT bushings, a single bushing with key must be used and located on the side opposite of the cast output flange.



CASE SIZE	Standard Kit Number	E-Z KLEEN Kit Number	Stainless Steel ULTRA KLEEN Kit	A	B	C	ØB.C. (D)	Ø B.C. (E)	F	G
13, 15	not available	not available	not available							
17	17FLANGE	17ZFLANGE	17SFLANGE	3.58	8.00	6.24	5.88	7.00	0.34	0.41
20	20FLANGE	20ZFLANGE	not available	3.68	8.00	6.24	5.88	7.00	0.34	0.41
23,26	2326FLANGE	2326ZFLANGE	23SFLANGE	3.94 / 4.03	9.60	7.52	7.50	8.47	0.41	0.51
30,35	3035FLANGE	3035ZFLANGE	3035SFLANGE	5.81 / 5.71	11.60	9.00	9.00	10.43	0.56	0.56
40, 47	not available	not available	not available							

FEATURES/BENEFITS PAGE G4-2	SPECIFICATION PAGE G4-8	NOMENCLATURE PAGE G4-9	SELECTION/DIMENSIONS PAGE G4-16
--------------------------------	----------------------------	---------------------------	------------------------------------

MODIFICATIONS/ACCESSORIES



TIGEAR-2 HOLLOW REDUCER BUSHING KITS

Bushing kits allow hollow output reducers to be mounted to various diameter shafting. Each kit includes bushing and key.

Reducer Size	Max Bore	Bore Size	Standard		Stainless Steel	
			GRIP TIGHT*	Straight Bore	GRIP TIGHT*	Straight Bore
13	3/4"	n/a	n/a	n/a	n/a	n/a
15	3/4"	n/a	n/a	n/a	n/a	n/a
17	1"	n/a	n/a	n/a	n/a	n/a

20	1-1/4"	1"	n/a	20BUSH100		20SBUSH100
Select standard bore reducer model number from pages G4-36 to G4-41 or washdown reducers from pages G4-80-G4-85.						

20 Alt.	1-3/16"	n/a	n/a			n/a
Select alternative max bore reducer model number from page G4-97 or washdown reducers from pages G4-80-G4-85.						

23	1-7/16"	1"	n/a	2326BUSH100		2326SBUSH100
		1-3/16"	n/a	2326BUSH103		2326SBUSH103
		1-1/4"	n/a	2326BUSH104		2326SBUSH104
Select standard bore reducer model number from pages 42 to 47 or washdown reducers from pages G4-80-G4-85.						

23 Alt	1-1/2"	1"	23TBUSH100	n/a	23STBUSH100	n/a
		1-3/16"	23TBUSH103	n/a	23STBUSH103	n/a
Select alternative max bore reducer model number from page G4-97 or washdown reducers from pages G4-80-G4-85.						

26	1-7/16"	1"	n/a	2326BUSH100		2326SBUSH100
		1-3/16"	n/a	2326BUSH103		2326SBUSH103
		1-1/4"	n/a	2326BUSH104		2326SBUSH104
Select standard bore reducer model number from pages G4-50 to G4-55 or washdown reducers from pages G4-80-G4-85.						

26 Alt	1-11/16" ^{mm}	1"	26TBUSH100	n/a	26STBUSH100	n/a
		1-3/16"	26TBUSH103	n/a	26STBUSH103	n/a
		1-1/4"	26TBUSH104	n/a	26STBUSH104	n/a
		1-3/8"	26TBUSH106	n/a	26STBUSH106	n/a
Select alternative max bore reducer model number from page G4-97 or washdown reducers from pages G4-80-G4-85.						

30	1-15/16"	1-3/8"	3035TBUSH106	n/a	3035STBUSH106	n/a
		1-7/16"	3035TBUSH107	n/a	3035STBUSH107	n/a
		1-1/2"	3035TBUSH108	n/a	3035STBUSH108	n/a
		1-11/16"	n/a	3035BUSH111		3035SBUSH111
Select standard bore reducer model number from pages G4-56 to G4-61 or washdown reducer from pages G4-80-G4-85.						

35	1-15/16"	1-3/8"	3035TBUSH106	n/a	3035STBUSH106	n/a
		1-7/16"	3035TBUSH107	n/a	3035STBUSH107	n/a
		1-1/2"	3035TBUSH108	n/a	3035STBUSH108	n/a
		1-11/16"		3035BUSH111		3035SBUSH111
Select standard bore reducer model number from pages G4-62 to G4-67 or washdown reducers from pages G4-80-G4-85.						

40	2-3/16"	1-1/2"	40TBUSH108	n/a	n/a	n/a
		1-11/16"	40TBUSH111	n/a	n/a	n/a
Select standard bore reducer model number from pages G4-68 to G4-73 or washdown reducers from pages G4-80-G4-85.						

47	2-15/16"	1-15/16"	47TBUSH115	n/a	n/a	n/a
		2-3/16"	47TBUSH203	n/a	n/a	n/a
Select standard bore reducer model number from pages G4-74 to G4-79 or washdown reducers from pages G4-80-G4-85.						

* Required shaft diameter tolerance for GRIP TIGHT bushings: +.000", -.003"

FEATURES/BENEFITS PAGE G4-2	SPECIFICATION PAGE G4-8	NOMENCLATURE PAGE G4-9	SELECTION/DIMENSIONS PAGE G4-16
--------------------------------	----------------------------	---------------------------	------------------------------------



GRIP TIGHT Tapered Adapter Bushing Kit



Straight Bore Bushing Kit

TIGEAR-2 HOLLOW REDUCERS WITH ALTERNATIVE MAXIMUM BORE

Size 20 Hollow Reducer Part Numbers with Alternative Maximum Bore (1-3/16")

Input	Motor Frame	Ratio									
		5	7.5	10	15	20	25	30	40	50	60
Quill	56C	20Q05HA56	20Q07HA56	20Q10HA56	20Q15HA56	20Q20HA56	20Q25HA56	20Q30HA56	20Q40HA56	20Q50HA56	20Q60HA56
	140TC	20Q05HA14	20Q07HA14	20Q10HA14	20Q15HA14	20Q20HA14	20Q25HA14				
Separate	Select Motor Adapter Kit as Needed	20S05HA	20S07HA	20S10HA	20S15HA	20S20HA	20S25HA	20S30HA	20S40HA	20S50HA	20S60HA
Coupled Assy	56C	20A05HA56	20A07HA56	20A10HA56	20A15HA56	20A20HA56	20A25HA56	20A30HA56	20A40HA56	20A50HA56	20A60HA56
	140TC	20A05HA14	20A07HA14	20A10HA14	20A15HA14	20A20HA14	20A25HA14				

Note: Tapered bushing kits are not available for size 20

Size 23 Hollow Reducer Part Numbers with Alternative Maximum Bore (1-1/2")

Input	Motor Frame	Ratio									
		5	7.5	10	15	20	25	30	40	50	60
Quill	56C	23Q05HA56	23Q07HA56	23Q10HA56	23Q15HA56	23Q20HA56	23Q25HA56	23Q30HA56	23Q40HA56	23Q50HA56	23Q60HA56
	140TC	23Q05HA14	23Q07HA14	23Q10HA14	23Q15HA14	23Q20HA14	23Q25HA14	23Q30HA14	23Q40HA14		
	180TC	23Q05HA18	23Q07HA18	23Q10HA18							
Separate	Select Motor Adapter Kit as Needed	23S05HA	23S07HA	23S10HA	23S15HA	23S20HA	23S25HA	23S30HA	23S40HA	23S50HA	23S60HA
Coupled Assy	56C	23A05HA56	23A07HA56	23A10HA56	23A15HA56	23A20HA56	23A25HA56	23A30HA56	23A40HA56	23A50HA56	23A60HA56
	140TC	23A05HA14	23A07HA14	23A10HA14	23A15HA14	23A20HA14	23A25HA14	23A30HA14	23A40HA14		
	180TC	23A05HA18	23A07HA18	23A10HA18							

Note: These reducers are required when using tapered bushing kits for size 23

Size 26 Hollow Reducer Part Numbers with Alternative Maximum Bore (1-11/16")

Input	Motor Frame	Ratio									
		5	7.5	10	15	20	25	30	40	50	60
Quill	56C		26Q07HA56	26Q10HA56	26Q15HA56	26Q20HA56	26Q25HA56	26Q30HA56	26Q40HA56	26Q50HA56	26Q60HA56
	140TC	26Q05HA14	26Q07HA14	26Q10HA14	26Q15HA14	26Q20HA14	26Q25HA14	26Q30HA14	26Q40HA14	26Q50HA14	26Q60HA14
	180TC	26Q05HA18	26Q07HA18	26Q10HA18	26Q15HA18						
Separate	Select Motor Adapter Kit as Needed	26S05HA	26S07HA	26S10HA	26S15HA	26S20HA	26S25HA	26S30HA	26S40HA	26S50HA	26S60HA
Coupled Assy	56C		26A07HA56	26A10HA56	26A15HA56	26A20HA56	26A25HA56	26A30HA56	26A40HA56	26A50HA56	26A60HA56
	140TC	26A05HA14	26A07HA14	26A10HA14	26A15HA14	26A20HA14	26A25HA14	26A30HA14	26A40HA14	26A50HA14	26A60HA14
	180TC	26A05HA18	26A07HA18	26A10HA18	26A15HA18						

Note: These reducers are required when using tapered bushing kits for size 26

FEATURES/BENEFITS PAGE G4-2	SPECIFICATION PAGE G4-8	NOMENCLATURE PAGE G4-9	SELECTION/DIMENSIONS PAGE G4-16
--------------------------------	----------------------------	---------------------------	------------------------------------

MODIFICATIONS/ACCESSORIES

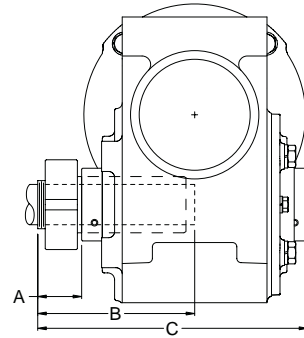


TIGEAR-2 TAPERED BUSHING DIMENSIONS

SINGLE BUSHING WITH KEY

Bushing Located On Side Of Reducer Closest To Driven Device

This is the Preferred mounting method for single bushing applications



REDUCER SIZE	DRIVEN SHAFT DIAMETER	A DISTANCE FROM END OF BUSHING TO END OF HOLLOW SHAFT	B DISTANCE FROM END OF BUSHING TO END OF DRIVEN SHAFT	C DISTANCE FROM END OF BUSHING TO OPPOSITE END OF HOLLOW SHAFT	KEYWAY WIDTH	MINIMUM KEYWAY LENGTH FROM END OF DRIVEN SHAFT
23	1.000	1.25	4.37	7.87	.25	3.12
	1.1875	1.25	4.37	7.87	.25	3.12
26	1.000	1.38	4.50	8.00	.25	3.12
	1.1875	1.38	4.50	8.00	.25	3.12
	1.250	1.38	4.50	8.00	.25	3.12
	1.375	1.38	4.50	8.00	.3125	3.12
30	1.375	1.44	5.12	9.20	.3125	3.68
	1.4375	1.44	5.12	9.20	.375	3.68
	1.500	1.44	5.12	9.20	.375	3.68
35	1.375	1.44	5.12	10.18	.3125	3.68
	1.4375	1.44	5.12	10.18	.375	3.68
	1.500	1.44	5.12	10.18	.375	3.68
40	1.500	1.69	6.24	11.51	.375	4.55
	1.6875	1.69	6.24	11.51	.375	4.55
47	1.9375	2.13	7.44	14.01	.500	5.31
	2.1875	2.13	7.44	14.01	.500	5.31

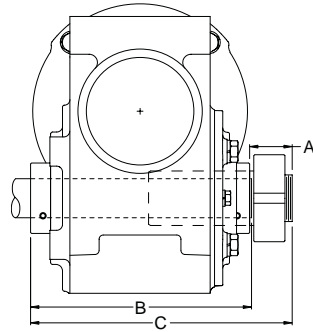
MODIFICATIONS/ACCESSORIES



TIGEAR-2 TAPERED BUSHING DIMENSIONS

SINGLE BUSHING WITH KEY

Bushing Located on Opposite Side of Reducer



REDUCER SIZE	DRIVEN SHAFT DIAMETER	A DISTANCE FROM END OF HOLLOW SHAFT TO END OF BUSHING	B DISTANCE FROM END OF HOLLOW SHAFT TO END OF DRIVEN SHAFT	C DISTANCE FROM HOLLOW SHAFT TO END OF BUSHING	KEYWAY WIDTH	MINIMUM KEYWAY LENGTH FROM END OF DRIVEN SHAFT
23	1.000	1.25	6.75	7.87	.25	1.75
	1.1875	1.25	6.75	7.87	.25	2.00
26	1.000	1.38	6.75	8.00	.25	1.75
	1.1875	1.38	6.75	8.00	.25	2.00
	1.250	1.38	6.75	8.00	.25	2.13
30	1.375	1.38	6.75	8.00	.3125	2.44
	1.375	1.44	7.89	9.20	.3125	2.44
	1.4375	1.44	7.89	9.20	.375	2.50
35	1.500	1.44	7.89	9.20	.375	2.63
	1.375	1.44	8.87	10.18	.3125	2.44
	1.4375	1.44	8.87	10.18	.375	2.50
40	1.500	1.44	8.87	10.18	.375	2.63
	1.500	1.69	9.95	11.51	.375	2.63
	1.6875	1.69	9.95	11.51	.375	2.88
47	1.9375	2.13	12.01	14.01	.500	3.38
	2.1875	2.13	12.01	14.01	.500	3.75

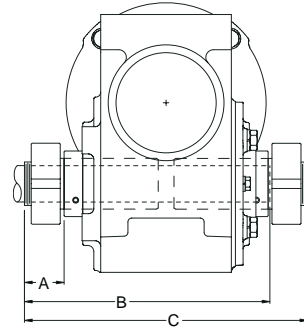
FEATURES/BENEFITS PAGE G4-2	SPECIFICATION PAGE G4-8	NOMENCLATURE PAGE G4-9	SELECTION/DIMENSIONS PAGE G4-16
--------------------------------	----------------------------	---------------------------	------------------------------------

MODIFICATIONS/ACCESSORIES



TIGEAR-2 TAPERED BUSHING DIMENSIONS DOUBLE BUSHING WITH KEY

This is the preferred mounting method for double bushing applications.



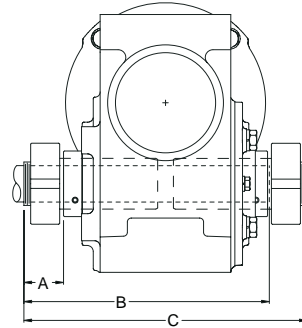
REDUCER SIZE	DRIVEN SHAFT DIAMETER	A DISTANCE FROM END OF BUSHING TO END OF HOLLOW SHAFT	B DISTANCE FROM END OF BUSHING TO END OF DRIVEN SHAFT	C TOTAL WIDTH OF BUSHINGS	KEYWAY WIDTH	MINIMUM KEYWAY LENGTH FROM END OF DRIVEN SHAFT
23	1.000	1.25	8.00	9.13	.25	6.75
	1.1875	1.25	8.00	9.13	.25	6.75
26	1.000	1.38	8.13	9.39	.25	6.75
	1.1875	1.38	8.13	9.39	.25	6.75
	1.250	1.38	8.13	9.39	.25	6.75
	1.375	1.38	8.13	9.39	.3125	6.75
30	1.375	1.44	9.33	10.65	.3125	7.89
	1.4375	1.44	9.33	10.65	.375	7.89
	1.500	1.44	9.33	10.65	.375	7.89
35	1.375	1.44	10.31	11.63	.3125	8.87
	1.4375	1.44	10.31	11.63	.375	8.87
	1.500	1.44	10.31	11.63	.375	8.87
40	1.500	1.69	11.64	13.21	.375	9.95
	1.6875	1.69	11.64	13.21	.375	9.95
47	1.9375	2.13	14.14	16.15	.500	12.01
	2.1875	2.13	14.14	16.15	.500	12.01

MODIFICATIONS/ACCESSORIES



TIGEAR-2 TAPERED BUSHING DIMENSIONS DOUBLE BUSHING WITHOUT KEY

Do not use for brake motor applications or other critical applications



REDUCER SIZE	A DISTANCE FROM END OF BUSHING TO END OF HOLLOW SHAFT	B DISTANCE FROM END OF BUSHING TO END OF DRIVEN SHAFT	C TOTAL WIDTH OF BUSHINGS
23	1.25	8.00	9.13
26	1.38	8.13	9.39
30	1.44	9.33	10.65
35	1.44	10.31	11.63
40	1.69	11.64	13.21
47	2.13	14.14	16.15

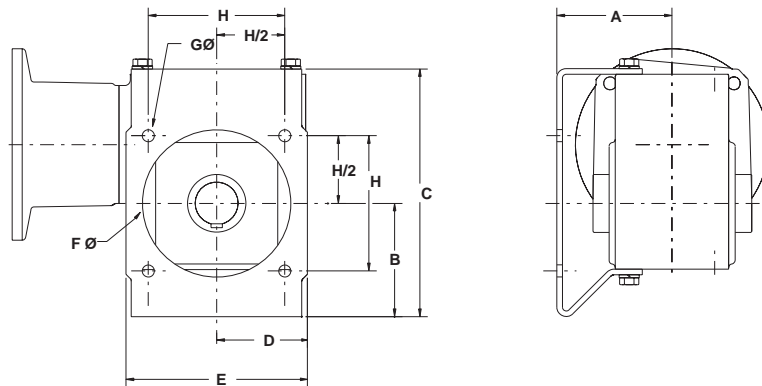
FEATURES/BENEFITS PAGE G4-2	SPECIFICATION PAGE G4-8	NOMENCLATURE PAGE G4-9	SELECTION/DIMENSIONS PAGE G4-16
--------------------------------	----------------------------	---------------------------	------------------------------------

MODIFICATIONS/ACCESSORIES



TIGEAR-2 OUTPUT BRACKET KIT

The Output Bracket Kit is used to mount the reducer to a flat surface perpendicular to the output shaft. On Hollow Shaft units, an output bracket may be substituted for a tie rod kit to restrain reactions. Each kit consists of a bracket and required mounting hardware. The Output Bracket kit can be mounted to either side of the reducer.



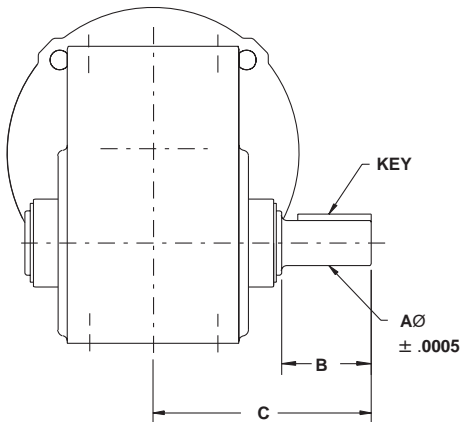
CASE SIZE	KIT NO.	A	B	C	D	E	F	G	H
13	13BRACKET	3.00	3.08	6.69	2.33	4.66	3.81	0.34	3.54
15	15BRACKET	3.21	2.81	6.86	2.33	4.66	3.81	0.34	3.54
17	17BRACKET	3.50	3.40	7.71	2.77	5.54	4.44	0.34	4.16
20	20BRACKET	3.88	3.85	8.42	3.05	6.10	5.00	0.41	4.60
23	23BRACKET	3.72	3.92	9.05	3.25	6.50	5.00	0.41	5.30
26	26BRACKET	4.63	4.20	10.20	3.80	7.60	6.56	0.41	5.66
30	30BRACKET	4.50	4.12	10.27	4.39	8.14	7.00	0.41	6.36
35	35BRACKET	5.25	5.51	12.35	4.80	9.60	8.56	0.41	7.07
40	40BRACKET	NA	NA	NA	NA	NA	NA	NA	NA
47	47BRACKET	NA	NA	NA	NA	NA	NA	NA	NA

MODIFICATIONS/ACCESSORIES



TIGEAR-2 PLUG-IN OUTPUT SHAFT KIT

A Plug-In Output Shaft Kit permits the conversion of a Hollow output to a Solid output reducer. Customers can easily change output shaft locations from L to R with this accessory. These kits can only be used with **standard** max bore reducers. They cannot be used with **alternative** max bore reducers. If other shaft requirements are necessary, consult DODGE. Kit includes shaft, snap rings and keys.



Case Size	Kit. No.	A +/- .0005
13	13PLUGIN	0.6245
15	15PLUGIN	0.7495
17	17PLUGIN	0.8745
20	20PLUGIN	0.9995
23	23PLUGIN	1.1245
26	26PLUGIN	1.1245
30	30PLUGIN	1.3745
35	35PLUGIN	1.4995
40	40PLUGIN	1.8745
47	47PLUGIN	1.9995

Case Size	B	C	KEY
13	1.82	4.47	3/16 SQ x 1.50
15	1.82	4.47	3/16 SQ x 1.50
17	1.81	4.81	3/16 SQ x 1.50
20	2.11	5.31	1/4 SQ x 1.75
23	2.36	6.05	1/4 SQ x 1.98
26	2.36	6.05	1/4 SQ x 1.98
30	3.43	7.76	5/16 SQ x 3.00
35	3.34	8.17	3/8 SQ x 2.93
40	4.10	9.46	1/2 SQ x 3.53
47	3.93	10.46	1/2 SQ x 3.53

Overhung Load Capacity Lbs At 1750 rpm Input

Case Size	Ratio	OHL Capacity
13	All	610 lbs.
15	All	650 lbs.
17	All	1200 lbs.
20	All	1600 lbs.
23	All	2000 lbs.
26	All	2000 lbs.
30	All	2550 lbs.
35	All	3100 lbs.
40	5:1 to 10:1	2800 lbs.
40	15:1 and higher	4080 lbs.
47	All	4600 lbs.

Note: OHL capacity is calculated at a distance of one hollow output hub bore diameter from the end of the output hub.

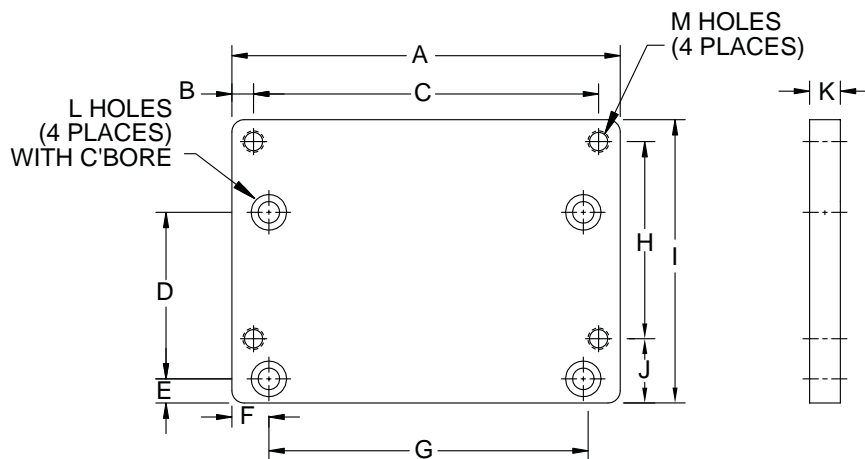
FEATURES/BENEFITS PAGE G4-2	SPECIFICATION PAGE G4-8	NOMENCLATURE PAGE G4-9	SELECTION/DIMENSIONS PAGE G4-16
--------------------------------	----------------------------	---------------------------	------------------------------------

MODIFICATIONS/ACCESSORIES

TIGEAR-2 TRANSITION BASE KITS FOR DOWNSIZING

TIGEAR-2 transition base kits allow a smaller reducer to “drop-in” to the bolt hole pattern of the next size larger reducer. This scenario is possible in many replacement situations because of the increases in the TIGEAR-2 output torque capacity.

The base will locate the output shaft in the same position as the one from the larger reducer being replaced.



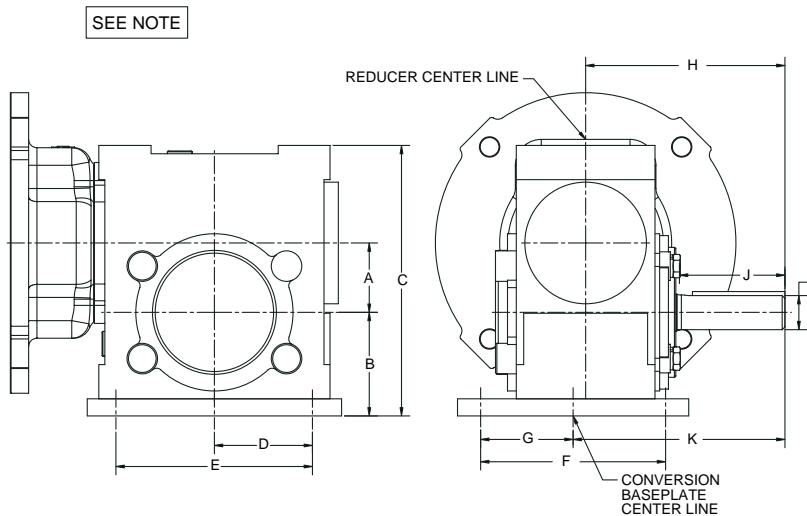
DOWN-SIZING		KIT NUMBER	A	B	C	D	E	F	G	H	I	J	K	L HOLES	M HOLES
FROM	TO														
26	23	23DOWN26	7.13	0.38	6.38	2.88	0.69	1.07	5.00	3.38	4.69	0.93	0.63	7/16 DRILL THRU	3/8-16 TAP THRU
30	26	26DOWN30	7.88	0.44	7.00	3.38	0.49	0.75	6.38	4.00	5.75	1.31	0.63	7/16 DRILL THRU	7/16-14 TAP THRU
35	30	30DOWN35	8.38	0.44	7.50	4.00	0.62	0.69	7.00	4.00	5.82	1.38	1.00	1/2 DRILL THRU	7/16-14 TAP THRU

TIGEAR-2 XL RIGHT ANGLE CONVERSION BASE

TIGEAR-2 conversion base kits allow customers who currently use single reduction Master XL right angle reducers to convert to TIGEAR-2.

The conversion base kits will be supplied with hardware to attach the conversion base to TIGEAR-2 unit.

Please note some dimensional differences exist between the Master XL reducers and TIGEAR-2 reducers with conversion base.



TIGEAR-2 SIZES	CONVERTED XL SIZE	KIT NO.	A	B	C	D	E	F	G	H	I	J	K	MASTER XL BASE TO CENTERLINE OF OUTPUT SHAFT
15	12	W12TO15BASE	1.50	2.250	5.86	2.12	4.25	4.00	2.00	4.31	0.750	2.23	4.00	2.23
17	16	W16TO17BASE	1.75	2.480	6.34	3.00	6.00	4.50	2.25	4.31	0.875	1.74	4.56	2.48
23	21	W21TO23BASE	2.31	3.365	8.25	3.50	7.00	7.00	3.50	5.14	1.125	2.18	6.00	3.37
35	28	W28TO35BASE	3.50	4.855	11.44	3.99	8.00	8.00	4.00	7.06	1.500	3.51	7.81	*3.985

* Denotes dimensional difference between XL Right angle and TIGEAR-2 unit with conversion base.

FEATURES/BENEFITS PAGE G4-2	SPECIFICATION PAGE G4-8	NOMENCLATURE PAGE G4-9	SELECTION/DIMENSIONS PAGE G4-16
--------------------------------	----------------------------	---------------------------	------------------------------------

TIGEAR-2 LUBRICATION

The DODGE TIGEAR-2 reducer is factory filled with a new synthetic lubricant which eliminates costly preparation time normally required to put a reducer into service. The lubricant supplied is a high performance, H1 food grade lubricant, suitable for all mounting positions. When reducer selections are properly service factored to account for the thermal limitations of the reducer, the standard lubricant covers an operating ambient temperature range of -10°F to 165°F. No other lubricant available on the market provides the outstanding wear protection and thermal abilities of the factory-filled lubricant. Other lubricants, including Mobil SHC series lubricant, must not be mixed with the factory supplied lubricant.

Low Temperature Lubricant

For operating ambient temperature ranges from -10°F to -30°F, order Low Temperature Lubricant at the time of reducer order. The low temperature lubricant has all of the high performance features of the standard temperature lubricant, but has been modified for lower temperatures. Contact Application Engineering for temperatures below -30°F.

Approximate Oil Volumes

REDUCER CONFIGURATION	REDUCER SIZE									
	13	15	17	20	23	26	30	35	40	47
(QH) Quill Input Hollow Output Shaft	6 oz.	7 oz.	11 oz.	14 oz.	21 oz.	28 oz.	44 oz.	60 oz.	89 oz.	164 oz.
(QS) Quill Input Solid Output Shaft	6 oz.	7 oz.	12 oz.	15 oz.	23 oz.	32 oz.	48 oz.	66 oz.	97 oz.	176 oz.
Separate or 3-Piece Coupled Input (AH & SH) Hollow Output Shaft	9 oz.	10 oz.	15 oz.	21 oz.	28 oz.	38 oz.	59 oz.	82 oz.	140 oz.	228 oz.
Separate or 3-Piece Coupled Input (AS & SS) Solid Output Shaft	9 oz.	11 oz.	18 oz.	23 oz.	32 oz.	44 oz.	70 oz.	94 oz.	144 oz.	266 oz.

Replacement factory recommended TIGEAR Lubricant may be ordered from DODGE. Use the following table to determine part number.

Standard Temperature Range		
Volume	Quart 32 oz.	Gallon 128 oz.
Part Number	334863	334862

Low Temperature Range		
Volume	Quart 32 oz.	Gallon 128 oz.
Part Number	334861	334860

FEATURES/BENEFITS PAGE G4-2	SPECIFICATION PAGE G4-8	NOMENCLATURE PAGE G4-9	SELECTION/DIMENSIONS PAGE G4-16
--------------------------------	----------------------------	---------------------------	------------------------------------

TIGEAR-2

OUTPUT SHAFT REVERSAL KITS

Tigear-2 reducers are stocked in left-hand and right-hand output shaft configurations. However, it is possible to convert a left-hand unit to a right-hand unit, or a right-hand unit to a left-hand unit in the field. A shaft reversal kit is required to make this change. Each kit includes a shaft seal, bore plug, o-ring, and instructions.

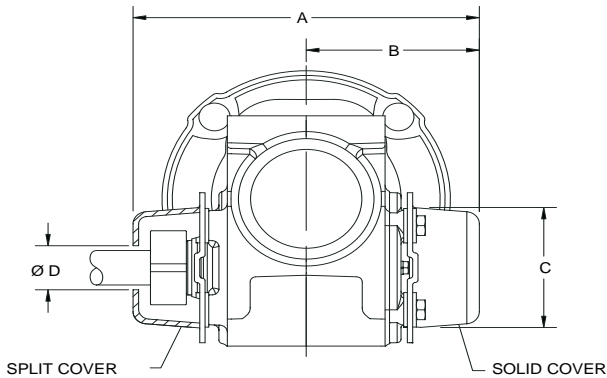
Reducer Size	Kit Part Number
13	13SHAFTREV
15	15SHAFTREV
17	17SHAFTREV
20	20SHAFTREV
23	23SHAFTREV
26	26SHAFTREV
30	30SHAFTREV
35	35SHAFTREV
40	40SHAFTREV
47	47SHAFTREV

MODIFICATIONS/ACCESSORIES

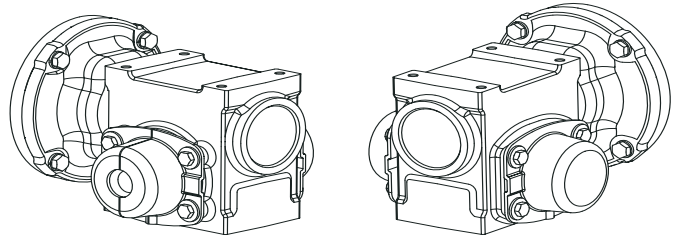


TIGEAR-2 HOLLOW OUTPUT SAFETY COVERS

Safety Cover Kits are available to enclose the rotating shaft on hollow output reducers. The kits are designed to fit reducers equipped with GRIP TIGHT or straight-bore bushings, or reducers equipped with the standard straight-bore hollow output shaft. The covers are made from a water-resistant polymer and include stainless steel fasteners for mild washdown applications. The covers are not water tight and it is possible for solid material to collect near the covers.



SAFETY COVER - END VIEW



SAFETY COVER - ISOMETRIC VIEWS

Case Size	Cover Style	Kit Number	A	B	C	D
17	Closed	17CLSDCOVER	8.0	4.0	3.1	---
	Open	17OPENCOVER	8.0	4.0	3.1	1.12
20	Closed	20CLSDCOVER	8.2	4.1	3.8	---
	Open	20OPENCOVER	8.2	4.1	3.8	1.50
23	Closed	23CLSDCOVER	9.2	4.6	3.4	---
	Open	23OPENCOVER	9.2	4.6	3.4	1.75
26	Closed	26CLSDCOVER	9.6	4.8	4.4	---
	Open	26OPENCOVER	9.6	4.8	4.4	1.94
30	Closed	30CLSDCOVER	10.8	5.4	3.9	---
	Open	30OPENCOVER	10.8	5.4	3.9	2.19
35	Closed	35CLSDCOVER	12.0	6.0	5.5	---
	Open	35OPENCOVER	12.0	6.0	5.5	2.19
40	Closed	40CLSDCOVER	13.6	6.8	4.5	---
	Open	40OPENCOVER	13.6	6.8	4.5	2.44