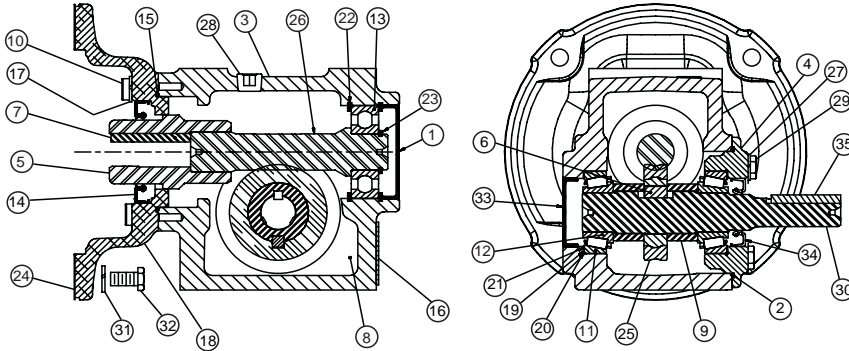




RENEWAL PARTS

TIGEAR-2 Quill Input / Solid Output Sizes 13- 23

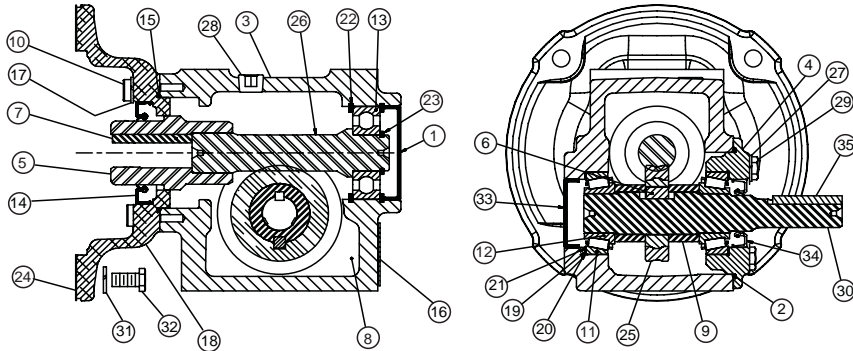


Ref No.	Description	Qty	13	15	17	20	23
			Part Number	Part Number	Part Number	Part Number	Part Number
1	INPUT BORE PLUG	1	276005	276005	276001	276001	276002
2	O-RING	1	276019	276019	276134	276355	334307
3	TIG2 SOLID GEARCASE	1	333210	333211	333212	333213	333214
4	T2 133& 150 SOLID BRG HSG	1	333265	333265	333266	333267	333268
5	QUILL CPLG 150 56C	1	See Gear Chart	See Gear Chart	See Gear Chart	See Gear Chart	See Gear Chart
6	GEAR KEY	1	333650	333661	333666	333671	333686
7	DRIV-LOK KEY 56-140	1	333698	333698	333667	333667	333698
	DRIV-LOK KEY 180TC	1	----	----	----	----	333707
	DRIV-LOK KEY 210TC	1	----	----	----	----	----
	DRIV-LOK KEY 250TC	1	----	----	----	----	----
8	TIGEAR 2 LUBRICANT	1	334863	334863	334863	334863	334863
9	SOLID SPACER	2	333725	333726	333727	333728	333729
10	SOCKET HEAD CAP SCR GR8	4	333801	333801	333801	333801	51492
	SCKT HD CAP SCR 180-210-250	4	----	----	----	----	----
11-12	BEARING CUP/CONE ASSM	2	335337	335337	411626-01-C	411626-01-A	411626-01-A
13	BALL BEARING	1	334218	334218	334219	334219	334220
14	INPUT SEAL T2 56-140	1	334274	334274	334274	334274	334276
	INPUT SEAL T2 180-210-250	1	----	----	----	----	----
15	"O-RING, NITRILE"	1	334301	334301	334301	334301	276355
16	TIGEAR 2 NAMEPLATE	1	334305	334305	334305	334305	334305
17	MED LOCKWASHER	4	419010	419010	419010	419010	275803

RENEWAL PARTS



TIGEAR-2 Quill Input / Solid Output Sizes 13 - 23



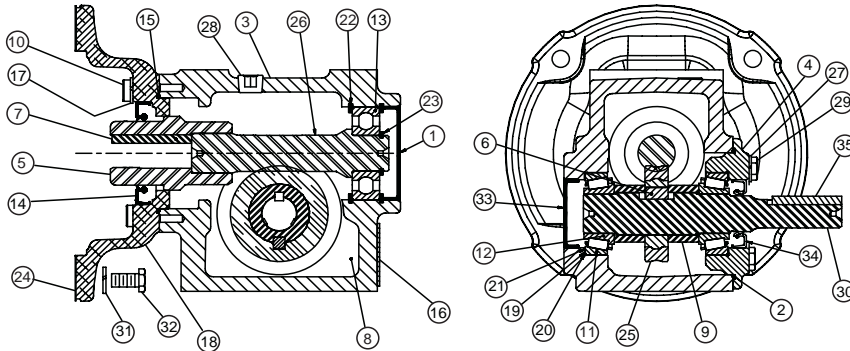
Ref No.	Description	Qty	13	15	17	20	23
			Part Number	Part Number	Part Number	Part Number	Part Number
18	MOTOR ADAPTER T2 56-140	1	333228	333228	333228	333228	333229
	MOTOR ADAPTER 180	1	----	----	----	----	334681
19-21	SHIM KIT	1	411642-42-E	411642-42-E	411623-33-A	411623-33-B	411623-33-B
22	INTERNAL RET RING	2	411637-02-AV	411637-02-AV	58256	58256	411637-01-A
23	EXTERNAL RET RING	1	411637-02-E		411637-02-AY	411637-02-AY	411637-02-N
24	56/140 M/A. GASKET	1	602028-43-F	602028-43-F	602028-43-F	602028-43-F	602028-43-F
	MTR ADPT GSKT 180-210-250	1	----	----	----	----	276335
25	TIG2 SOLID GEAR	1	See Gear Chart	See Gear Chart	See Gear Chart	See Gear Chart	See Gear Chart
26	TIG2 WORMSHAFT	1	See Gear Chart	See Gear Chart	See Gear Chart	See Gear Chart	See Gear Chart
27	MED LOCKWASHER	4	419009	419009	419010	419010	275803
28	PIPE PLUG 1/4" SOC.	2	411647-34-B	411647-34-B	411647-34-B	411647-34-B	411647-34-B
29	HEX HEAD CAP SCREW GR5	4	51302	51302	411405	411405	51929
30	SOLID O/P SHFT-SINGLE EXTN	1	333604	333605	333606	333607	333608
31	LOCK WASHER 56-140	4	275803	275803	275803	275803	275803
	LOCK WASHER 180-210	4	----	----	----	----	----
32	HEX HD CAP SCR MTR 56-140	4	51492	51492	51929	51492	51929
	HEX HD CAP SCR MTR 180-210	4	----	----	----	----	411631-63-A
	HEX HD CAP SCR MTR 250	4	----	----	----	----	----
33	OUTPUT BORE PLUG	1	276008	276008	334245	334247	334247
34	TIG2 SEAL, OUTPUT	1	334271	334271	334272	334273	334273
35	KEY	1	333665	333660	333665	55025	333685

FEATURES/BENEFITS PAGE G4-2	SPECIFICATION PAGE G4-8	NOMENCLATURE PAGE G4-9	MODIFICATION/ACCESSORIES PAGE G4-90
--------------------------------	----------------------------	---------------------------	--



RENEWAL PARTS

TIGEAR-2 Quill Input / Solid Output Sizes 26 - 47

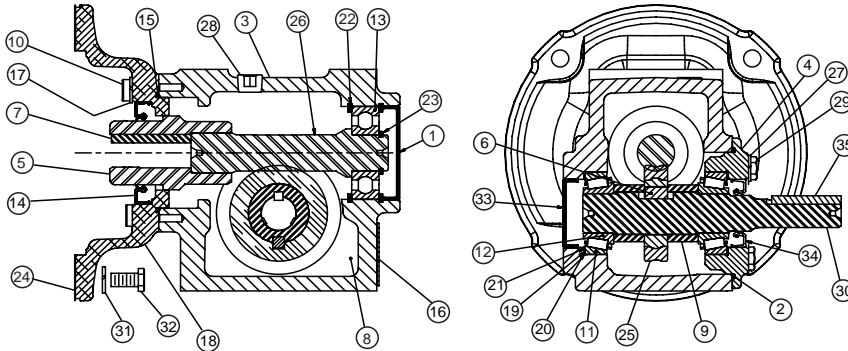


Ref No.	Description	Qty	26	30	35	40	47
			Part Number	Part Number	Part Number	Part Number	Part Number
1	INPUT BORE PLUG	1	334248	276004	276007	334250	334253
2	O-RING	1	334302	334308	276358	334313	334315
3	TIG2 SOLID GEARCASE	1	333215	333216	333217	334506	334576
4	T2 133& 150 SOLID BRG HSG	1	333269	333270	333271	334510	334580
5	QUILL CPLG 150 56C	1	See Gear Chart	See Gear Chart	See Gear Chart	See Gear Chart	See Gear Chart
6	GEAR KEY	1	333696	333706	333775	334564	334624
7	DRIV-LOK KEY 56-140	1	333698	333698	333715	334557	334557
	DRIV-LOK KEY 180TC	1	333707	333707	333707	334558	334558
	DRIV-LOK KEY 210TC	1	-----	-----	333721	334559	334559
	DRIV-LOK KEY 250TC	1	-----	-----	-----	334560	334560
8	TIGEAR 2 LUBRICANT	1	334862	334862	334862	334862	334862
9	SOLID SPACER	2	333730	333731	333732	334565	334625
10	SOCKET HEAD CAP SCR GR8	4	51492	51492	51952	51952	51952
	SCKT HD CAP SCR 180-210-250	4	-----	-----	334374	334374	334374
11-12	BEARING CUP/CONE ASSM	2	411626-01-A	335338	411626-01-R	335340	335344
13	BALL BEARING	1	334221	334222	334223	334224	334225
14	INPUT SEAL T2 56-140	1	334276	334276	334276	334276	334276
	INPUT SEAL T2 180-210-250	1	-----	-----	334279	334279	334279
15	O-RING, NITRILE	1	276355	276355	334302	334302	334302
16	TIGEAR 2 NAMEPLATE	1	334305	334305	334305	334305	334305
17	MED LOCKWASHER	4	275803	275803	275855	275855	275855

RENEWAL PARTS



TIGEAR-2 Quill Input / Solid Output Sizes 26 - 47



Ref No.	Description	Qty	26	30	35	40	47
			Part Number	Part Number	Part Number	Part Number	Part Number
18	MOTOR ADAPTER T2 56-140	1	333229	333229	334759	334759	334759
	MOTOR ADAPTER 180-210	1	334681	334681	333231	333231	333231
	MOTOR ADPT PLT 250TC (1)	1	----	----	----	334570	334570
19-21	SHIM KIT	1	411623-33-B	335330	411623-33-C	335331	335336
22	INTERNAL RET RING	2	278715	411637-02-AC	278717	51334	51335
23	EXTERNAL RET RING	1	411637-02-AP	411637-02-AR	411637-02-BA	334404	333933
24	56/140 M/A. GASKET	1	602028-43-F	602028-43-F	602028-43-F	602028-43-F	602028-43-F
	MTR ADPT GSKT 180-210-250 (4)	1	276335	276335	276335	276335	276335
25	TIG2 SOLID GEAR	1	See Gear Chart	See Gear Chart	See Gear Chart	See Gear Chart	See Gear Chart
26	TIG2 WORMSHAFT	1	See Gear Chart	See Gear Chart	See Gear Chart	See Gear Chart	See Gear Chart
27	MED LOCKWASHER	4	275803	275855	275855	419036	419036
28	PIPE PLUG 1/4" SOC.	2	411647-34-B	411647-34-B	411647-34-B	411647-34-B	411647-34-B
29	HEX HEAD CAP SCREW GR5	4	51929	51952	51952	411483	411484
30	SOLID O/P SHFT-SINGLE EXTN	1	333609	333610	333611	334554	334619
31	LOCK WASHER 56-140	4	275803	275803	275803	275803	275803
	LOCK WASHER 180-210	4	----	----	275855	275853	275853
32	HEX HD CAP SCR MTR 56-140	4	51929	51929	51929	51929	51929
	HEX HD CAP SCR MTR 180-210	4	411631-63-A	411631-63-A	411631-58-X	334896	334896
	HEX HD CAP SCR MTR 250	4	----	----	----	276446	276446
33	OUTPUT BORE PLUG	1	334247	334246	334254	334251	334252
34	TIG2 SEAL, OUTPUT	1	334273	334274	334275	334277	334278
35	KEY	1	333695	333705	333716	55127	55127

(1) 250TC adpt plate bolts onto 180-210 motor adapter.

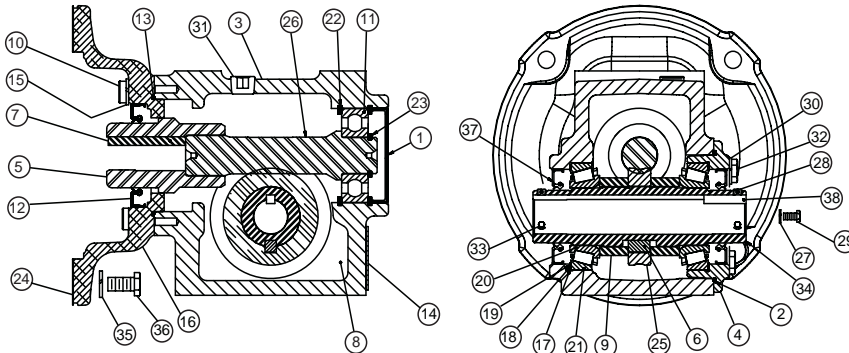
(4) Frame size 250 uses qty 2.

FEATURES/BENEFITS PAGE G4-2	SPECIFICATION PAGE G4-8	NOMENCLATURE PAGE G4-9	MODIFICATION/ACCESSORIES PAGE G4-90
--------------------------------	----------------------------	---------------------------	--



RENEWAL PARTS

TIGEAR-2 Quill Input / Hollow Output Sizes 13 - 23

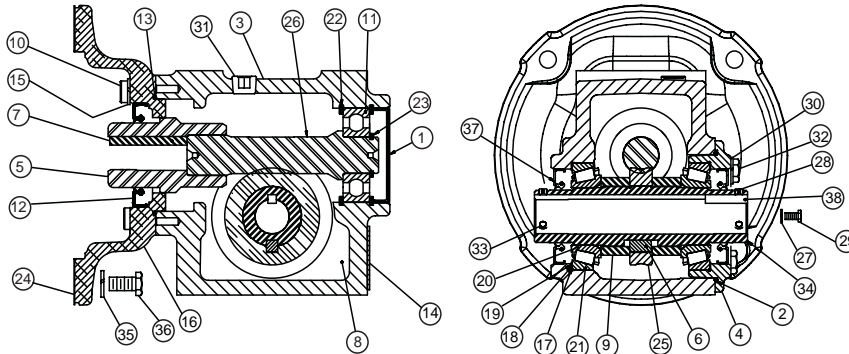


Ref No	Description	Qty	13	15	17	20	23
			Part Number	Part Number	Part Number	Part Number	Part Number
1	I/P RIBBED BORE PLUG	1	276005	276005	276001	276001	276002
2	O-RING	1	276019	276019	276134	276355	334307
3	TIG2 HOLLOW GEARCASE	1	333218	333219	333220	333221	333222
4	T2 HOLLOW BRG HOUSING	1	333281	333281	333282	333283	333284
5	QUILL CPLG	1	See Gear Chart	See Gear Chart	See Gear Chart	See Gear Chart	See Gear Chart
6	SOLID GEAR KEY	1	333650	333650	333666	333671	333686
7	DRIV-LOK KEY 56-140	1	333698	333698	333667	333667	333698
	DRIV-LOK KEY 180TC	1	----	----	----	----	333707
	DRIV-LOK KEY 210TC	1	----	----	----	----	----
	DRIV-LOK KEY 250TC	1	----	----	----	----	----
8	TIGEAR 2 LUBRICANT	1	334863	334863	334863	334863	334862
9	TIG2 HOLLW O/P SPACER	2	333733	333734	333735	333736	333737
10	SOCKET HEAD CAP SCREW	4	333801	333801	333801	333801	51492
11	BALL BRG.	1	334218	334218	334219	334219	334220
12	TIG2 SEAL, INPUT 56-140	1	334274	334274	334274	334274	334276
	TIG2 SEAL, INPUT 180-210	1	----	----	----	----	----
13	O-RING, NITRILE	1	334301	334301	334301	334301	276355
14	TIGEAR 2 NAMEPLATE FIN	1	334305	334305	334305	334305	334305
15	MED LOCKWASHER	4	419010	419010	419010	419010	275803
16	MOTOR ADAPTER T2 56-140	1	333228	333228	333228	333228	333229
	MOTOR ADAPTER, 180	1	----	----	----	----	334681
17-19	SHIM KIT	1	411623-33-B	411623-33-B	335330	411623-33-C	335331

RENEWAL PARTS



TIGEAR-2 Quill Input / Hollow Output Sizes 13 - 23



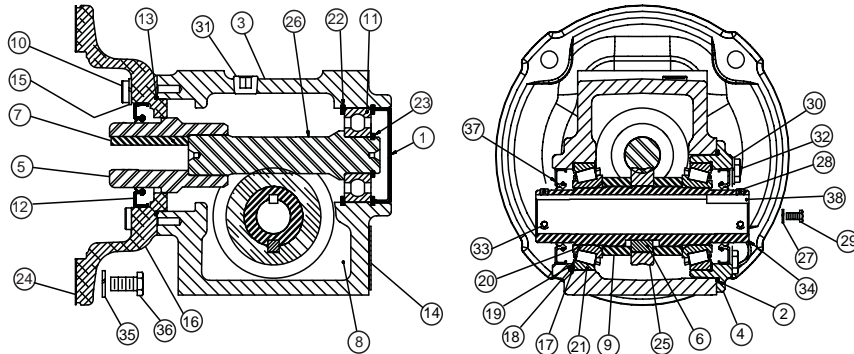
Ref No	Description	Qty	13	15	17	20	23
			Part Number	Part Number	Part Number	Part Number	Part Number
20-21	BEARING CUP/CONE ASSEMBLY	2	411626-01-A	411626-01-A	335338	335339	335340
22	INTERNAL RET RING	2	411637-02-AV	411637-02-AV	58256	58256	411637-01-A
23	EXTERNAL RET RING	1	411637-02-E	411637-02-E	411637-02-AY	411637-02-AY	411637-02-N
24	56/140 M/A. GASKET	1	602028-43-F	602028-43-F	602028-43-F	602028-43-F	602028-43-F
	MOTOR ADPT GASKET 180-210-250	1	----	----	----	----	276335
25	TIG2 HOLLOW GEAR	1	See Gear Chart	See Gear Chart	See Gear Chart	See Gear Chart	See Gear Chart
26	TIG2 WORMSHAFT	1	See Gear Chart	See Gear Chart	See Gear Chart	See Gear Chart	See Gear Chart
27	MED LOCKWASHER	2	419007	419007	419007	419007	419009
28	SET SCREW	2	400140	400140	400140	400140	400140
29	HEX HEAD CAP SCREW	2	58270	58270	333800	333800	51302
30	MED LOCKWASHER	4	419009	419009	419010	419010	275803
31	PIPE PLUG 1/4" OC.	2	411647-34-B	411647-34-B	411647-34-B	411647-34-B	411647-34-B
32	HEX HEAD CAP SCREW	4	51302	51302	411405	411405	51929
33	SET SCREW	4	275953	275953	275953	275953	275953
34	TIG2 HOLLOW O/P SHAFT	1	333629	333629	333631	334789	333633
35	LOCK WASHER 56-140	4	275803	275803	275803	275803	275803
	LOCK WASHER 180	4	----	----	----	----	----
36	HEX HEAD CAP SCREW	4	51492	51492	51929	51492	51929
	SHCS MTR MOUNTING 180-210	4	----	----	----	----	411631-63-A
	SHCS MTR MOUNTING 250	4	----	----	----	----	----
37	SEAL TIGEAR 2, OUTPUT	2	334273	334273	334274	334276	334277
38	OUTPUT KEY	1	54783	54783	55025	55025	333687

FEATURES/BENEFITS PAGE G4-2	SPECIFICATION PAGE G4-8	NOMENCLATURE PAGE G4-9	MODIFICATION/ACCESSORIES PAGE G4-90
--------------------------------	----------------------------	---------------------------	--



RENEWAL PARTS

TIGEAR-2 Quill Input / Hollow Output Sizes 26 - 47



Ref No	Description	Qty	26	30	35	40	47
			Part Number	Part Number	Part Number	Part Number	Part Number
1	I/P RIBBED BORE PLUG	1	334248	276004	276007	334250	334253
2	O-RING	1	334302	334308	276358	334313	334315
3	TIG2 HOLLOW GEARCASE	1	333223	333224	333225	334507	334577
4	T2 HOLLOW BRG HOUSING	1	333285	333286	333287	334512	334582
5	QUILL CPLG	1	See Gear Chart	See Gear Chart	See Gear Chart	See Gear Chart	See Gear Chart
6	SOLID GEAR KEY	1	333670	333712	333717	334564	334624
7	DRIV-LOK KEY 56-140	1	333698	333698	333715	334557	-----
	DRIV-LOK KEY 180TC	1	333707	333707	333707	334558	334558
	DRIV-LOK KEY 210TC	1	-----	-----	333721	334559	334559
	DRIV-LOK KEY 250TC	1	-----	-----	-----	334560	334560
8	TIGEAR 2 LUBRICANT	1	334862	334862	334862	334862	334862
9	TIG2 HOLLW O/P SPACER	2	333738	333739	333740	334566	334626
10	SOCKET HEAD CAP SCREW	4	51492	51492	334374	334374	334374
11	BALL BRG.	1	334221	334222	334223	334224	334225
12	TIG2 SEAL, INPUT 56-140	1	334276	334276	334276	334276	334276
	TIG2 SEAL, INPUT 180-210	1	-----	-----	334279	334279	334279
13	O-RING, NITRILE	1	276355	276355	334302	334302	334302
14	TIGEAR 2 NAMEPLATE FIN	1	334305	334305	334305	334305	334305
15	MED LOCKWASHER	4	275803	275803	275855	275855	275855
16	MOTOR ADAPTER T2 56-140	1	333229	333229	334759	334759	-----
	MOTOR ADAPTER, 180-210TC	1	334681	334681	333231	333231	333231
	MOTOR ADPT PLATE 250TC (2)	1	-----	-----	-----	334570	334570
17-19	SHIM KIT	1	335332	335333	335333	335334	335335

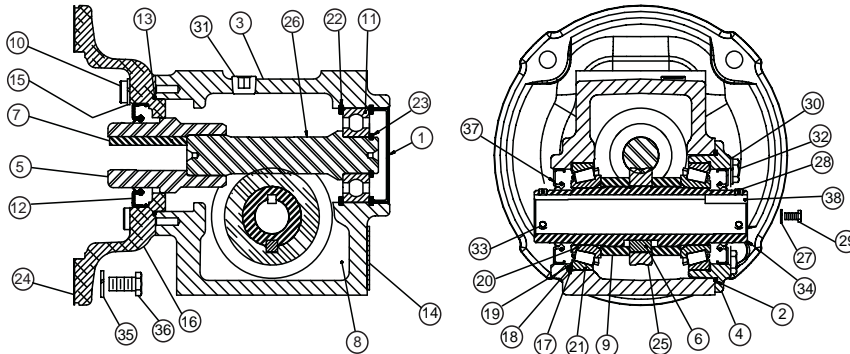
(2) Adapter plate bolts onto 180-210 adapter 333231.

FEATURES/BENEFITS PAGE G4-2	SPECIFICATION PAGE G4-8	NOMENCLATURE PAGE G4-9	MODIFICATION/ACCESSORIES PAGE G4-90
--------------------------------	----------------------------	---------------------------	--

RENEWAL PARTS



TIGEAR-2 Quill Input / Hollow Output Sizes 26 - 47



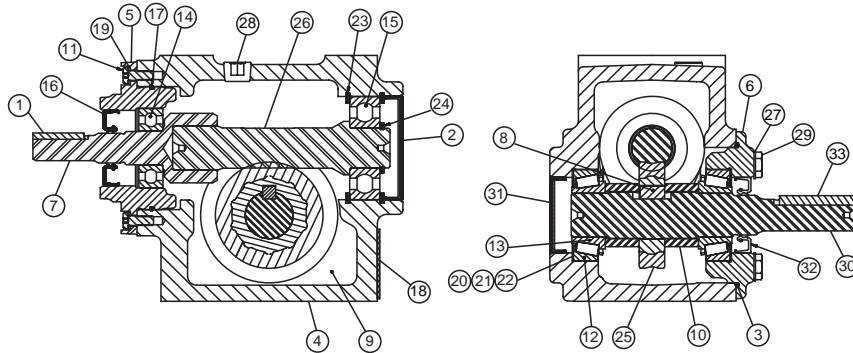
Ref No	Description	Qty	26	30	35	40	47
			Part Number	Part Number	Part Number	Part Number	Part Number
20-21	BEARING CUP/CONE ASSEMBLY	2	411626-01-BJ	335341	335341	335342	335343
22	INTERNAL RET RING	2	278715	411637-02-AC	278717	51334	51335
23	EXTERNAL RET RING	1	411637-02-AP	411637-02-AR	411637-02-BA	334404	333933
24	56/140 M/A. GASKET	1	602028-43-F	602028-43-F	602028-43-F	602028-43-F	-----
	MOTOR ADPT GASKET 180-210-250 (3)	1	276335	276335	276335	276335	276335
25	TIG2 HOLLOW GEAR	1	See Gear Chart	See Gear Chart	See Gear Chart	See Gear Chart	See Gear Chart
26	TIG2 WORMSHAFT	1	See Gear Chart	See Gear Chart	See Gear Chart	See Gear Chart	See Gear Chart
27	MED LOCKWASHER	2	419009	419009	419009	419009	419009
28	SET SCREW	2	400140	400140	400140	400140	275953
29	HEX HEAD CAP SCREW	2	51302	411397	411396	411396	411402
30	MED LOCKWASHER	4	275803	275855	275855	419036	419036
31	PIPE PLUG 1/4" SOC.	2	411647-34-B	411647-34-B	411647-34-B	411647-34-B	411647-34-B
32	HEX HEAD CAP SCREW	4	51929	51952	51952	411483	411484
33	SET SCREW	4	275962	275954	275954	333805	333805
34	TIG2 HOLLOW O/P SHAFT	1	333634	333635	333636	334556	334621
35	LOCK WASHER 56-140	4	275803	275803	275803	275803	-----
	LOCK WASHER 180	4	-----	-----	-----	275853	275853
36	HEX HEAD CAP SCREW	4	51929	51929	51929	51929	-----
	SHCS MTR MOUNTING 180-210	4	411631-63-A	411631-63-A	411631-58-X	334896	334896
	SHCS MTR MOUNTING 250	4	-----	-----	-----	276446	276446
37	SEAL TIGEAR 2, OUTPUT"	2	334278	334279	334279	334280	334281
38	OUTPUT KEY	1	333687	333709	333709	334563	334623

FEATURES/BENEFITS PAGE G4-2	SPECIFICATION PAGE G4-8	NOMENCLATURE PAGE G4-9	MODIFICATION/ACCESSORIES PAGE G4-90
--------------------------------	----------------------------	---------------------------	--



RENEWAL PARTS

TIGEAR-2 Separate Input / Solid Output Sizes 13 - 23



Ref No	Description	Qty	13	15	17	20	23
			Part Number	Part Number	Part Number	Part Number	Part Number
1	INPUT KEY	1	55582	55582	54783	54783	54783
2	I/P RIBBED B/P	1	276005	276005	276001	276001	276002
3	O-RING	1	276019	276019	276134	276355	334307
4	TIG2 SOLID GEARCASE	1	333210	333211	333212	333213	333214
5	T2 I/P BRG CARRIER	1	333245	333245	333246	333246	333249
6	T2 SOLID BRG HSG	1	333265	333265	333266	333267	333268
7	TIG2 INPUT COUPLING	1	See Gear Chart	See Gear Chart	See Gear Chart	See Gear Chart	See Gear Chart
8	SOLID GEAR KEY	1	333650	333661	333666	333671	333686
9	TIGEAR 2 LUBRICANT	1	334863	334863	334863	334863	334862
10	SOLID SPACER	2	333725	333726	333727	333728	333729
11	LHCS PLAIN	2	333808	333808	333808	333808	333807
12-13	BEARING CUP/CONE ASSM	2	335337	335337	411626-01-C	411626-01-A	411626-01-A
14	BALL BEARING	1	334211	334211	334212	334212	334213
15	BALL BEARING	1	334218	334218	334219	334219	334220
16	TIG2 INPUT SEAL	1	334270	334270	334271	334271	334272
17	O-RING, NITRILE	1	334300	334300	334300	334300	334303
18	TIGEAR 2 NAMEPLATE	1	334305	334305	334305	334305	334305
19	MED LOCKWASHER	2	419007	419007	419007	419007	419009
20-22	SHIM KIT	1	411642-46-E	411642-46-E	411623-33-A	411623-33-B	411623-33-B
23	INTERNAL RET RING	2	411637-02-AV	411637-02-AV	j58256	58256	411637-01-A
24	EXTERNAL RET RING	1	411637-02-E	411637-02-E	411637-02-AV	411637-02-AV	411637-02-N
25	SOLID GEAR	1	See Gear Chart	See Gear Chart	See Gear Chart	See Gear Chart	See Gear Chart
26	WORMSHAFT	1	See Gear Chart	See Gear Chart	See Gear Chart	See Gear Chart	See Gear Chart
27	PIPE PLUG 1/4" SOC. (1)	2	411647-34-B	411647-34-B	411647-34-B	411647-34-B	411647-34-B
28	MED LOCKWASHER	4	419009	419009	419010	419010	275803
29	HEX HEAD CAP SCREW	4	51302	51302	411405	411405	51J929
30	O/P SHAFT, SINGLE EXTN	1	333604	333605	333606	333607	333608
31	O/P RIBBED BORE PLUG	1	276008	276008	334245	334247	334247
32	TIG2 SEAL, OUTPUT	1	334271	334271	334272	334273	334273
33	KEY, OUTPUT	1	333665	333660	333665	55025	333685

(1) Size 400 & 475 uses qty 1

(2) Size 475 requires 266 oz. of lube. Order qty 2 (gal) 334862 & qty 1 (qt.) of 334863.

FEATURES/BENEFITS
PAGE G4-2

SPECIFICATION
PAGE G4-8

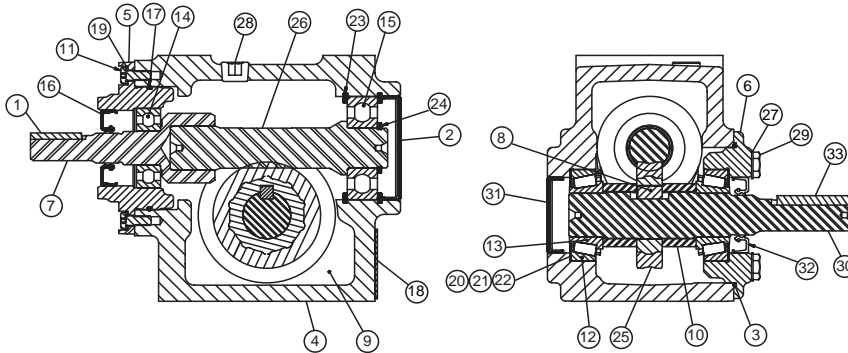
NOMENCLATURE
PAGE G4-9

MODIFICATION/ACCESSORIES
PAGE G4-90

RENEWAL PARTS



TIGEAR-2 Separate Input / Solid Output Sizes 26 - 47



Ref No	Description	Qty	26	30	35	40	47
			Part Number	Part Number	Part Number	Part Number	Part Number
1	INPUT KEY	1	54783	54783	51744	334561	334561
2	I/P RIBBED B/P	1	334248	276004	276007	334250	334253
3	O-RING	1	334302	334308	276358	334313	334315
4	TIG2 SOLID GEARCASE	1	333215	333216	333217	334506	334576
5	T2 I/P BRG CARRIER	1	333249	333250	333253	334508	334508
6	T2 SOLID BRG HSG	1	333269	333270	333271	334510	334580
7	TIG2 INPUT COUPLING	1	See Gear Chart	See Gear Chart	See Gear Chart	See Gear Chart	See Gear Chart
8	SOLID GEAR KEY	1	333696	333706	333775	334564	334624
9	TIGEAR 2 LUBRICANT	1	334862	334862	334862	334862	334862 (2)
10	SOLID SPACER	2	333730	333731	333732	334565	334625
11	LHHC'S PLAIN	2	333807	333807	333807	333807	333807
12-13	BEARING CUP/CONE ASSM	2	411626-01-A	335338	411626-01-R	335340	335344
14	BALL BEARING	1	334213	334214	334215	334216	334216
15	BALL BEARING	1	334221	334222	334223	334224	334225
16	TIG2 INPUT SEAL	1	334272	334272	334272	334274	334274
17	O-RING, NITRILE	1	334303	334303	334314	334314	334314
18	TIGEAR 2 NAMEPLATE	1	334305	334305	334305	334305	334305
19	MED LOCKWASHER	2	419009	419009	419009	419009	419009
20-22	SHIM KIT	1	411623-33-B	335330	411623-33-C	335331	335336
23	INTERNAL RET RING	2	278715	411637-02-AC	278717	51334	51335
24	EXTERNAL RET RING	1	411637-02-AP	411637-02-AR	411637-02-BA	334404	333933
25	SOLID GEAR	1	See Gear Chart	See Gear Chart	See Gear Chart	See Gear Chart	See Gear Chart
26	WORMSHAFT	1	See Gear Chart	See Gear Chart	See Gear Chart	See Gear Chart	See Gear Chart
27	PIPE PLUG 1/4" SOC. (1)	2	411647-34-B	411647-34-B	411647-34-B	411647-34-B	411647-34-B
28	MED LOCKWASHER	4	275803	275855	275855	419036	419036
29	HEX HEAD CAP SCREW	4	51929	51952	51952	411483	411484
30	O/P SHAFT, SINGLE EXTN	1	333609	333610	333611	334554	334619
31	O/P RIBBED BORE PLUG	1	334247	334246	334254	334251	334252
32	TIG2 SEAL, OUTPUT	1	334273	334274	334275	334277	334278
33	KEY, OUTPUT	1	333695	333705	333716	55127	55127

(1) Size 400 & 475 uses qty 1

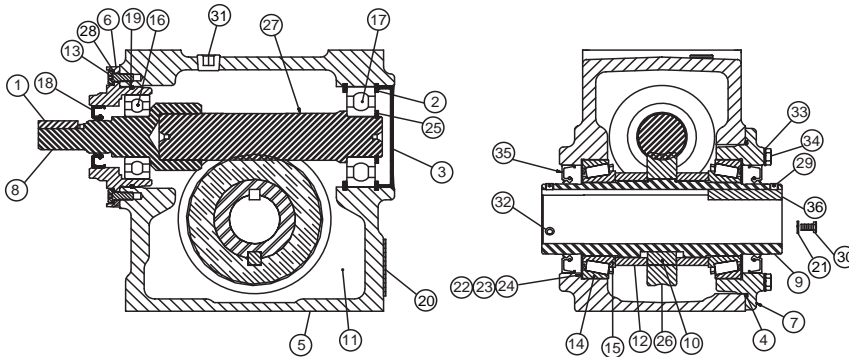
(2) Size 475 requires 266 oz. of lube. Order qty 2 (gal) 334862 & qty 1 (qt.) of 334863.

FEATURES/BENEFITS PAGE G4-2	SPECIFICATION PAGE G4-8	NOMENCLATURE PAGE G4-9	MODIFICATION/ACCESSORIES PAGE G4-90
--------------------------------	----------------------------	---------------------------	--



RENEWAL PARTS

TIGEAR-2 Separate Input / Hollow Output Sizes 13 - 23



Ref No	Description	Qty	13	15	17	20	23
			Part Number	Part Number	Part Number	Part Number	Part Number
1	INPUT KEY	1	55582	55582	54783	54783	54783
2	INTERNAL RET RING	2	411637-02-AV	411637-02-AV	58256	58256	411637-01-A
3	I/P RIBBED BORE PLUG	1	276005	276005	276001	276001	276002
4	O-RING	1	276019	276019	276134	276355	334307
5	TIG2 HOLLOW GEARCASE	1	333218	333219	333220	333221	333222
6	T2 I/P BRG CARRIER	1	333245	333245	333246	333246	333249
7	T2 HOLLOW BRG HOUSING	1	333281	333281	333282	333283	333284
8	TIG2 SEP INPUT CPLG	1	See Gear Chart	See Gear Chart	See Gear Chart	See Gear Chart	See Gear Chart
9	HOLLOW OUTPUT SHAFT	1	333629	333629	333631	334789	333633
10	H/O GEAR KEY	1	333650	333650	333666	333671	333686
11	TIGEAR 2 LUBRICANT	1	334863	334863	334863	334863	334863
12	HOLLOW O/P SPACER	2	333733	333734	333735	333736	333737
13	LHCS PLAIN	2	333808	333808	333808	333808	333807
14-15	BEARING CUP/CONE ASSM	2	411626-01-A	411626-01-A	335338	335339	335340
16	BALL BEARING	1	334211	334211	334212	334212	334213
17	BALL BEARING.	1	334218	334218	334219	334219	334220
18	INPUT SEAL	1	334270	334270	334271	334271	334272
19	O-RING, NITRILE	1	334300	334300	334300	334300	334303
20	TIGEAR 2 NAMEPLATE	1	334305	334305	334305	334305	334305
21	MED LOCKWASHER	2	419007	419007	419007	419007	419009
22-24	SHIM KIT	1	411623-33-B	411623-33-B	335330	411623-33-C	335331
25	EXTERNAL RET RING	1	411637-02-E	411637-02-E	411637-02-AV	411637-02-AV	411637-02-N
26	TIG2 WORMSHAFT	1	See Gear Chart	See Gear Chart	See Gear Chart	See Gear Chart	See Gear Chart
27	TIG2 HOLLOW GEAR	1	See Gear Chart	See Gear Chart	See Gear Chart	See Gear Chart	See Gear Chart
28	MED LOCKWASHER	2	419007	419007	419007	419007	419009
29	SET SCREW	2	400140	400140	400140	400140	400140
30	HEX HEAD CAP SCREW	2	58270	58270	333800	333800	51302
31	PIPE PLUG 1/4" SOC.	2	411647-34-B	411647-34-B	411647-34-B	411647-34-B	411647-34-B
32	SET SCREW	4	275953	275953	275953	275953	275953
33	MED LOCKWASHER	4	419009	419009	419010	419010	275803
34	HEX HEAD CAP SCREW	4	51302	51302	411405	411405	51929
35	OUTPUT SEAL T2	2	334273	334273	334274	334276	334277
36	OUTPUT KEY	1	54783	54783	55025	55025	333687

FEATURES/BENEFITS
PAGE G4-2

SPECIFICATION
PAGE G4-8

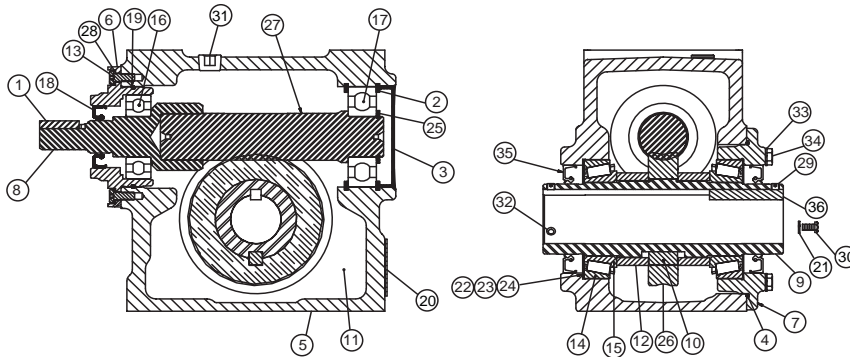
NOMENCLATURE
PAGE G4-9

MODIFICATION/ACCESSORIES
PAGE G4-90

RENEWAL PARTS



TIGEAR-2 Separate Input / Hollow Output Sizes 26 - 47

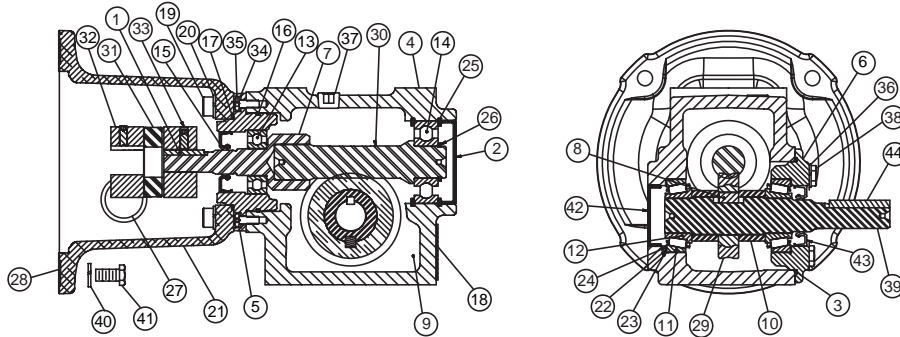


Ref No	Description	Qty	26	30	35	40	47
			Part Number	Part Number	Part Number	Part Number	Part Number
1	INPUT KEY	1	54783	54783	51744	334561	334561
2	INTERNAL RET RING	2	278715	411637-02-AC	278717	51334	51335
3	I/P RIBBED BORE PLUG	1	334248	276004	276007	334250	334253
4	O-RING	1	334302	334308	276358	334313	334315
5	TIG2 HOLLOW GEARCASE	1	333223	333224	333225	334507	334577
6	T2 I/P BRG CARRIER	1	333249	333250	333253	334508	334508
7	T2 HOLLOW BRG HOUSING	1	333285	333286	333287	334512	334582
8	TIG2 SEP INPUT CPLG	1	See Gear Chart	See Gear Chart	See Gear Chart	See Gear Chart	See Gear Chart
9	HOLLOW OUTPUT SHAFT	1	333634	333635	333636	334556	334621
10	H/O GEAR KEY	1	333670	333712	333717	334564	334624
11	TIGEAR 2 LUBRICANT	1	334862	334862	334862	334862	334862
12	HOLLOW O/P SPACER	2	333738	333739	333740	334566	334626
13	LHCS PLAIN	2	333807	333807	333807	333807	333807
14-15	BEARING CUP/CONE ASSM	2	411626-01-BJ	335341	335341	335342	335343
16	BALL BEARING	1	334213	334214	334215	334216	334216
17	BALL BEARING.	1	334221	334222	334223	334224	334225
18	INPUT SEAL	1	334272	334272	334272	334274	334274
19	O-RING, NITRILE	1	334303	334303	334314	334314	334314
20	TIGEAR 2 NAMEPLATE	1	334305	334305	334305	334305	334305
21	MED LOCKWASHER	2	419009	419009	419009	419009	419009
22-24	SHIM KIT	1	335332	335333	335333	335334	335335
25	EXTERNAL RET RING	1	411637-02-AP	411637-02-AR	411637-02-BA	334404	333933
26	TIG2 WORMSHAFT	1	See Gear Chart	See Gear Chart	See Gear Chart	See Gear Chart	See Gear Chart
27	TIG2 HOLLOW GEAR	1	See Gear Chart	See Gear Chart	See Gear Chart	See Gear Chart	See Gear Chart
28	MED LOCKWASHER	2	419009	419009	419009	419009	419009
29	SET SCREW	2	400140	400140	400140	400140	275953
30	HEX HEAD CAP SCREW	2	51302	411397	411396	411396	411402
31	PIPE PLUG 1/4" SOC.	2	411647-34-B	411647-34-B	411647-34-B	411647-34-B	411647-34-B
32	SET SCREW	4	275962	275954	275954	333805	333805
33	MED LOCKWASHER	4	275803	275855	275855	419036	419036
34	HEX HEAD CAP SCREW	4	51929	51952	51952	411483	411483
35	OUTPUT SEAL T2	2	334278	334279	334279	334280	334281
36	OUTPUT KEY	1	333687	333709	333709	334563	334623

FEATURES/BENEFITS PAGE G4-2	SPECIFICATION PAGE G4-8	NOMENCLATURE PAGE G4-9	MODIFICATION/ACCESSORIES PAGE G4-90
--------------------------------	----------------------------	---------------------------	--

RENEWAL PARTS

TIGEAR-2 Coupled Input / Solid Output Sizes 13 - 23



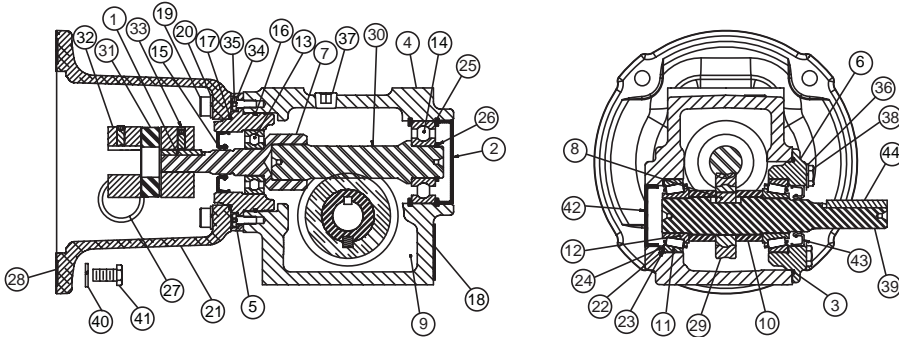
Ref No	Description	Qty	13	15	17	20	23
			Part Number	Part Number	Part Number	Part Number	Part Number
1	INPUT KEY	1	55582	55582	54783	54783	54783
2	INPUT BORE PLUG	1	276005	276005	276001	276001	276002
3	O-RING	1	276019	276019	276134	276355	334307
4	TIG2 SOLID GEARCASE	1	333210	333211	333212	333213	333214
5	T2 INPUT BRG CARRIER	1	333245	333245	333246	333246	333249
6	T2 SOLID BRG HSG	1	333265	333265	333266	333267	333268
7	TIG2 INPUT CPLG	1	See Gear Chart	See Gear Chart	See Gear Chart	See Gear Chart	See Gear Chart
8	SOLID GEAR KEY	1	333650	333661	333666	333671	333686
9	TIGEAR 2 LUBRICANT	7	334863	334863	334863	334863	334862
10	SOLID SPACER	2	333725	333726	333727	333728	333729
11-12	BEARING CUP/CONE ASSEMBLY	2	335337	335337	411626-01-C	411626-01-A	411626-01-A
13	BALL BRG. C3 CLRNC	1	334211	334211	334212	334212	334213
14	BALL BRG. C3 CLRNC	1	334218	334218	334219	334219	334220
15	TIG2 SEAL, INPUT	1	334270	334270	334271	334271	334272
16	O-RING, NITRILE	1	334300	334300	334300	334300	334303
17	O-RING, NITRILE	1	334304	334304	334304	334304	276355
18	NAMEPLATE T2	1	334305	334305	334305	334305	334305
19	CAP SCREW 56-140	4	417371	417371	417371	417371	417111
	SOCKET HEAD CAP SCR 180-210	1	-----	-----	-----	-----	-----
20	MED LOCKWASHER	4	419010	419010	419010	419010	275803
21	MOTOR ADAPTER 56-140	1	333236	333236	333236	333236	333237
	MOTOR ADAPTER	1	-----	-----	-----	-----	334683
22-24	SHIM KIT	1	411642-46-E	411642-46-E	411623-33-A	411623-33-B	411623-33-B
25	INT RING	2	411637-02-AV	411637-02-AV	58256	58256	411637-01-A
26	EXT RING	1	411637-02-E	411637-02-E	411637-02-AY	411637-02-AY	411637-02-N
27	DUST CAP 1" HOLE	1	411709-65-H	411709-65-H	411709-65-H	411709-65-H	411709-65-H
28	56/140 MTR ADPT GASKET	1	602028-43-F	602028-43-F	602028-43-F	602028-43-F	602028-43-F
	MOTOR ADPT GASKET 180-210	1	-----	-----	-----	-----	276335

FEATURES/BENEFITS PAGE G4-2	SPECIFICATION PAGE G4-8	NOMENCLATURE PAGE G4-9	MODIFICATION/ACCESSORIES PAGE G4-90
--------------------------------	----------------------------	---------------------------	--

RENEWAL PARTS



TIGEAR-2 Coupled Input / Solid Output Sizes 13 - 23



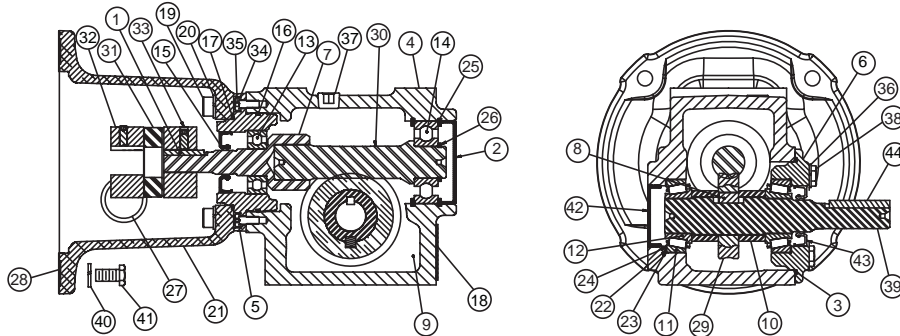
Ref No	Description	Qty	13	15	17	20	23
			Part Number	Part Number	Part Number	Part Number	Part Number
29	TIG2 SOLID GEAR	1	See Gear Chart	See Gear Chart	See Gear Chart	See Gear Chart	See Gear Chart
30	TIG2 WORMSHAFT	1	See Gear Chart	See Gear Chart	See Gear Chart	See Gear Chart	See Gear Chart
31	COUPLING SPIDER 56 MTR	1	278911	278911	278911	278911	278911
	COUPLING SPIDER 140 MTR	1	----	----	278912	278912	278912
	COUPLING SPIDER 180 MTR	1	----	----	----	----	275794
32	5/8 COUPLING, 56 MOTOR	1	278900	278900	278900	278900	278900
	7/8 COUPLING, 140 MOTOR	1	----	----	276169	276169	276169
	1-1/8 COUPLING, 180 MOTOR	1	----	----	----	----	278907
33	COUPLING HUB, REDUCER 56	1	334309	334309	278900	278900	278901
	COUPLING HUB, REDUCER 140	1	----	----	334306	334306	276169
	COUPLING HUB, REDUCER 180	1	----	----	----	----	275806
34	MED LOCKWASHER	2	419007	419007	419007	419007	419009
35	LHHCS PLAIN	2	333808	333808	333808	333808	333807
36	MED LOCKWASHER	4	419009	419009	419010	419010	275803
37	"PIPE PLUG 1/4" SOC.	2	411647-34-B	411647-34-B	411647-34-B	411647-34-B	411647-34-B
38	HEX HEAD CAP SCREW	4	51302	51302	411405	411405	51929
39	T2 SGL SOLID OUTPUT SHAFT	1	333604	333605	333606	333607	333608
40	LOCK WASHER 56-140	4	275803	275803	275803	275803	275803
	3/8-16 X 1 HHCS PLN ZC 56-140	4	51929	51929	51929	51929	51929
41	SOC HD CAP SCREW 180	4	----	----	----	----	411631-63-A
	OUTPUT BORE PLUG	1	276008	276008	334245	334247	334247
43	TIG2 SEAL, OUTPUT	1	334271	334271	334272	334273	334273
44	KEY, OUTPUT SHAFT	1	333665	333660	333665	55025	333685

FEATURES/BENEFITS PAGE G4-2	SPECIFICATION PAGE G4-8	NOMENCLATURE PAGE G4-9	MODIFICATION/ACCESSORIES PAGE G4-90
--------------------------------	----------------------------	---------------------------	--



RENEWAL PARTS

TIGEAR-2 Coupled Input / Solid Output Sizes 26 - 47



Ref No	Description	Qty	26	30	35	40	47
			Part Number	Part Number	Part Number	Part Number	Part Number
1	INPUT KEY	1	54783	54783	51744	334561	334561
2	INPUT BORE PLUG	1	334248	276004	276007	334250	334253
3	O-RING	1	334302	334308	276358	334313	334315
4	TIG2 SOLID GEARCASE	1	333215	333216	333217	334506	334576
5	T2 INPUT BRG CARRIER	1	333249	333250	333253	334508	334508
6	T2 SOLID BRG HSG	1	333269	333270	333271	334510	334580
7	TIG2 INPUT CPLG	1	See Gear Chart	See Gear Chart	See Gear Chart	See Gear Chart	334517
8	SOLID GEAR KEY	1	333696	333706	333775	334564	334624
9	TIGEAR 2 LUBRICANT	7	334862	334862	334862	334862	334862
10	SOLID SPACER	2	333730	333731	333732	334565	334625
11-12	BEARING CUP/CONE ASSEMBLY	2	411626-01-A	335338	411626-01-R	335340	335344
13	BALL BRG. C3 CLRNC	1	334213	334214	334215	334216	334216
14	BALL BRG. C3 CLRNC	1	334221	334222	334223	334224	334225
15	TIG2 SEAL, INPUT	1	334272	334272	334272	334274	334274
16	O-RING, NITRILE	1	334303	334303	334314	334314	334314
17	O-RING, NITRILE	1	276355	276355	276355	276355	276355
18	NAMEPLATE T2	1	334305	334305	334305	334305	334305
19	CAP SCREW 56-140	4	417111	417111	334895	-----	-----
	SOCKET HEAD CAP SCR 180-210	1	-----	-----	334373	334373	334373
20	MED LOCKWASHER	4	275803	275803	275855	333783	333783
	MOTOR ADAPTER 56-140	1	333237	333237	334757	-----	-----
	MOTOR ADAPTER 180	1	334683	334683	333239	333239	333239
	MOTOR ADPT PLT-BOLT ON 210 (2)	1	-----	-----	334571	334571	334571
	MOTOR ADPT PLT-BOLT ON 250 (2)	1	-----	-----	-----	334570	334570
22-24	SHIM KIT	1	411623-33-B	335330	411623-33-C	335331	335336
25	INT RING	2	278715	411637-02-AC	278717	51334	51335
26	EXT RING	1	411637-02-AP	411637-02-AR	411637-02-BA	334404	333933
27	DUST CAP 1" HOLE	1	411709-65-H	411709-65-H	411709-65-H	411709-65-H	411709-65-H
28	56/140 MTR ADPT GASKET	1	602028-43-F	602028-43-F	602028-43-F	-----	-----
	MOTOR ADPT GASKET 180-210	1	276335	276335	276335	276335	276335

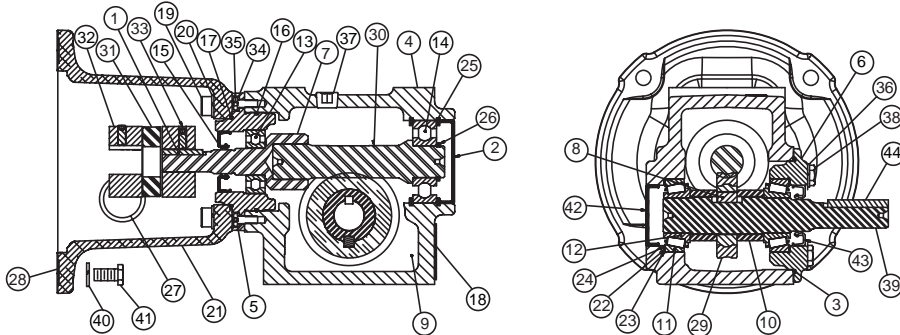
(2) Adapter plate bolts onto 180 adapter 334683.

FEATURES/BENEFITS PAGE G4-2	SPECIFICATION PAGE G4-8	NOMENCLATURE PAGE G4-9	MODIFICATION/ACCESSORIES PAGE G4-90
--------------------------------	----------------------------	---------------------------	--

RENEWAL PARTS



TIGEAR-2 Coupled Input / Solid Output Sizes 26 - 47



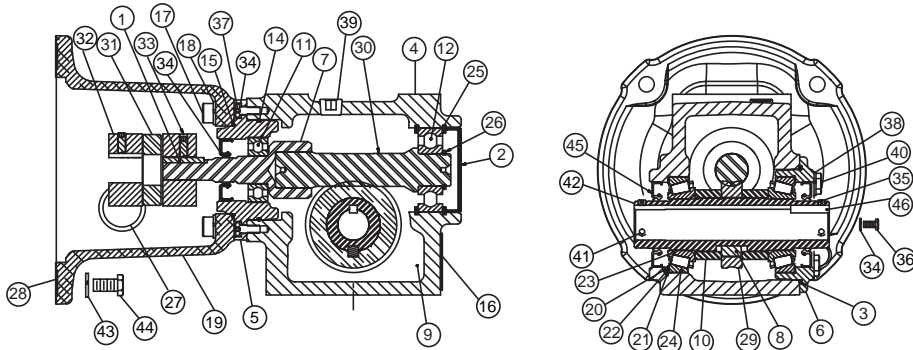
Ref No	Description	Qty	26	30	35	40	47
			Part Number	Part Number	Part Number	Part Number	Part Number
29	TIG2 SOLID GEAR	1	See Gear Chart	See Gear Chart	See Gear Chart	See Gear Chart	See Gear Chart
30	TIG2 WORMSHAFT	1	See Gear Chart	See Gear Chart	See Gear Chart	See Gear Chart	See Gear Chart
31	COUPLING SPIDER 56 MTR	1	278911	278911	278912	----	----
	COUPLING SPIDER 140 MTR	1	278912	278912	278912	----	----
	COUPLING SPIDER 180 MTR	1	275794	275794	275794	275794	275794
	COUPLING SPIDER 210-250 MTR	1	----	----	334291	334291	334291
32	5/8 COUPLING, 56 MOTOR	1	278900	278900	334292	----	----
	7/8 COUPLING, 140 MOTOR	1	276169	276169	276169	----	----
	1-1/8 COUPLING, 180 MOTOR	1	278907	278907	278907	278907	278907
	1-3/8 COUPLING, 210 MOTOR	1	----	----	334286	334286	334286
	1-3/8 COUPLING, 250 MOTOR	1	----	----	----	334288	334288
33	COUPLING HUB, REDUCER 56	1	278901	278901	276169	----	----
	COUPLING HUB, REDUCER 140	1	276169	276169	276169	----	----
	COUPLING HUB, REDUCER 180	1	275806	275806	275806	278907	278907
	COUPLING HUB, REDUCER 210-250	1	----	----	334285	334290	334290
34	MED LOCKWASHER	2	419009	419009	419009	419009	419009
35	LHHCS PLAIN	2	333807	333807	333807	333807	333807
36	MED LOCKWASHER	4	275803	275855	275855	419036	419036
37	PIPE PLUG 1/4" SOC.	2	411647-34-B	411647-34-B	411647-34-B	411647-34-B	411647-34-B
38	HEX HEAD CAP SCREW	4	51929	51952	51952	411483	411484
39	T2 SGL SOLID OUTPUT SHAFT	1	333609	333610	333611	334554	334619
40	LOCK WASHER 56-140	4	275803	275803	275803	----	----
	LOCK WASHER 210-250	4	----	----	275853	275853	275853
41	3/8-16 X 1 HHCS PLN ZC 56-140	4	51929	51929	51929	----	----
	SOC HD CAP SCREW 180	4	411631-63-A	411631-63-A	411631-58-X	411631-58-X	411631-58-X
	HEX HD CAP SCREW 210	4	----	----	275845	275845	275845
	HEX HD CAP SCREW 250	4	----	----	----	276447	276447
42	OUTPUT BORE PLUG	1	334247	334246	334254	334251	334252
43	TIG2 SEAL, OUTPUT	1	334273	334274	334275	334277	334278
44	KEY, OUTPUT SHAFT	1	333695	333705	333716	55127	55127

FEATURES/BENEFITS PAGE G4-2	SPECIFICATION PAGE G4-8	NOMENCLATURE PAGE G4-9	MODIFICATION/ACCESSORIES PAGE G4-90
--------------------------------	----------------------------	---------------------------	--



RENEWAL PARTS

TIGEAR-2 Coupled Input / Hollow Output Sizes 13 - 23



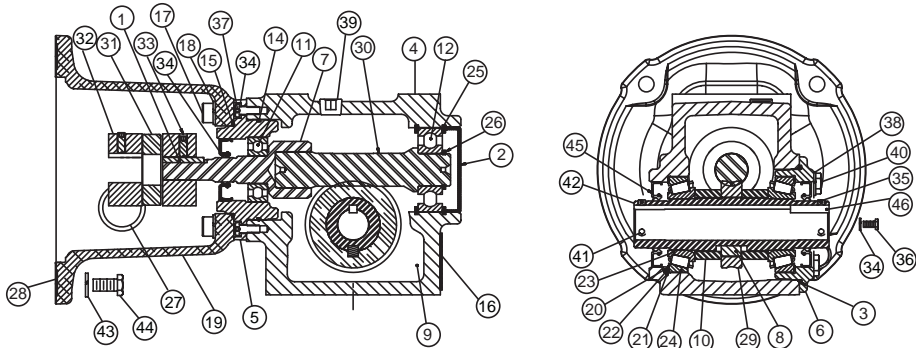
Ref No	Description	Qty	13	15	17	20	23
			Part Number	Part Number	Part Number	Part Number	Part Number
1	INPUT KEY	1	55582	55582	54783	54783	54783
2	INPUT BORE PLUG	1	276005	276005	276001	276001	276002
3	O-RING	1	276019	276019	276134	276355	334307
4	TIG2 HOLLOW GEARCASE	1	333218	333219	333220	333221	333222
5	T2 I/P BRG CARRIER	1	333245	333245	333246	333246	333249
6	T2 HOLLOW BRG HOUSING	1	333281	333281	333282	333283	333284
7	TIG2 SEP INPUT CPLG	1	See Gear Chart	See Gear Chart	See Gear Chart	See Gear Chart	See Gear Chart
8	GEAR KEY	1	333650	333650	333666	333671	333686
9	TIGEAR 2 LUBRICANT	1	334863	334863	334863	334863	334863
10	TIG2 HOLLW O/P SPACER	2	333733	333734	333735	333736	333737
11	BALL BEARING	1	334211	334211	334212	334212	334213
12	BALL BEARING	1	334218	334218	334219	334219	334220
13	TIG2 SEAL, INPUT	1	334270	334270	334271	334271	334272
14	O-RING, NITRILE	1	334300	334300	334300	334300	334303
15	O-RING, NITRILE	1	334304	334304	334304	334304	276355
16	NAMEPLATE T2	1	334305	334305	334305	334305	334305
17	CAD PLTD SCREW 56-140	4	417371	417371	417371	417371	417111
	CAD PLTD SCREW 180-210-250	4	-----	-----	-----	-----	-----
18	MED LOCKWASHER	4	419010	419010	419010	419010	275803
19	T2 ADPT. M. ADPTR 56-140	1	333236	333236	333236	333236	333237
	MOTOR ADAPTER 180	1	-----	-----	-----	-----	334683
20-22	SHIM KIT	1	411623-33-B	411623-33-B	335330	411623-33-C	335331
23-24	BEARING CUP/CONE ASSEMBLY	2	411626-01-A	411626-01-A	335338	335339	335340
25	INT RING	2	411637-02-AV	411637-02-AV	58256	58256	411637-01-A
26	EXT RING	1	411637-02-E	411637-02-E	411637-02-AY	411637-02-AY	411637-02-N
27	DUST CAP 1" HOLE	1	411709-65-Q	411709-65-Q	411709-65-Q	411709-65-Q	411709-65-Q
28	56/140 M/A. GASKET	1	602028-43-F	602028-43-F	602028-43-F	602028-43-F	602028-43-F
	MOTOR GASKET 180-210	1	-----	-----	-----	-----	276335
29	TIG2 HOLLOW GEAR	1	See Gear Chart	See Gear Chart	See Gear Chart	See Gear Chart	See Gear Chart
30	TIG2 WORMSHAFT	1	See Gear Chart	See Gear Chart	See Gear Chart	See Gear Chart	See Gear Chart

FEATURES/BENEFITS PAGE G4-2	SPECIFICATION PAGE G4-8	NOMENCLATURE PAGE G4-9	MODIFICATION/ACCESSORIES PAGE G4-90
--------------------------------	----------------------------	---------------------------	--

RENEWAL PARTS



TIGEAR-2 Coupled Input / Hollow Output Sizes 13 - 23

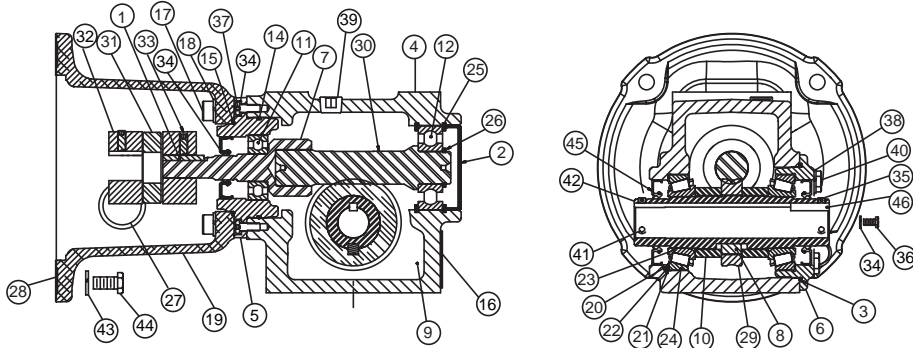


Ref No	Description	Qty	13	15	17	20	23
			Part Number	Part Number	Part Number	Part Number	Part Number
31	SPIDER 56C	1	278911	278911	278911	278911	278911
	SPIDER 140TC	1	-----	-----	278912	278912	278912
	SPIDER 180TC	1	-----	-----	-----	-----	275794
32	5/8 COUPLING HUB-MOTOR 56C	1	278900	278900	278900	278900	278900
	7/8 COUPLING HUB-MOTOR 140TC	1	-----	-----	276169	276169	276169
	1-1/8 COUPLING HUB-MTR 180TC	1	-----	-----	-----	-----	278907
33	COUPLING - REDUCER 56C	1	334309	334309	278900	278900	278901
	COUPLING - REDUCER 140TC	1	-----	-----	334306	334306	276169
	COUPLING - REDUCER 180TC	1	-----	-----	-----	-----	275806
34	MED LOCKWASHER	4	419007	419007	419007	419007	419009
35	SET SCREW	2	400140	400140	400140	400140	400140
36	HHCS GR5 ZC	2	58270	58270	333800	333800	51302
37	LHHCS PLAIN	2	333808	333808	333808	333808	333807
38	MED LOCKWASHER	4	419009	419009	419010	419010	275803
39	"PIPE PLUG 1/4" SOC.	2	411647-34-B	411647-34-B	411647-34-B	411647-34-B	411647-34-B
40	HEX HEAD CAP SCREW	4	51302	51302	411405	411405	51929
41	SET SCREW	4	275953	275953	275953	275953	275953
42	HOLLOW OUTPUT SHAFT	1	333629	333629	333631	334789	333633
43	LOCK WASHER 56-140	4	275803	275803	275803	275803	275803
44	3/8-16 X 1 HHCS PLN ZC 56-140	4	51929	51929	51929	51929	51929
	SOCKET HEAD CAP SCR 180	4	-----	-----	-----	-----	411631-63-A
45	SEAL TIGEAR 2, OUTPUT	2	334273	334273	334274	334276	334277
46	OUTPUT KEY	2	54783	54783	55025	55025	333687

FEATURES/BENEFITS PAGE G4-2	SPECIFICATION PAGE G4-8	NOMENCLATURE PAGE G4-9	MODIFICATION/ACCESSORIES PAGE G4-90
--------------------------------	----------------------------	---------------------------	--

RENEWAL PARTS

TIGEAR-2 Coupled Input / Hollow Output Sizes 26 - 47



Ref No	Description	Qty	26	30	35	40	47
			Part Number	Part Number	Part Number	Part Number	Part Number
1	INPUT KEY	1	54783	54783	51744	334561	334561
2	INPUT BORE PLUG	1	334248	276004	276007	334250	334253
3	O-RING	1	334302	334308	276358	334313	334315
4	TIG2 HOLLOW GEARCASE	1	333223	333224	333225	334507	334577
5	T2 I/P BRG CARRIER	1	333249	333250	333253	334508	334508
6	T2 HOLLOW BRG HOUSING	1	333285	333286	333287	334512	334582
7	TIG2 SEP INPUT CPLG	1	See Gear Chart	See Gear Chart	See Gear Chart	See Gear Chart	See Gear Chart
8	GEAR KEY	1	333670	333712	333717	334564	334624
9	TIGEAR 2 LUBRICANT	1	334862	334862	334862	334862	334862
10	TIG2 HOLLW O/P SPACER	2	333738	333739	333740	334566	334626
11	BALL BEARING	1	334213	334214	334215	334216	334216
12	BALL BEARING	1	334221	334222	334223	334224	334225
13	TIG2 SEAL, INPUT	1	334272	334272	334272	334274	334274
14	O-RING, NITRILE	1	334303	334303	334314	334314	334314
15	O-RING, NITRILE	1	276355	276355	276355	276355	276355
16	NAMEPLATE T2	1	334305	334305	334305	334305	334305
17	CAD PLTD SCREW 56-140	4	417111	417111	334895	-----	-----
17	CAD PLTD SCREW 180-210-250	4	-----	-----	334373	334373	334373
18	MED LOCKWASHER	4	275803	275803	275855	333783	333783
19	T2 ADPT. M. ADPTR 56-140	1	333237	333237	334757	-----	-----
	MOTOR ADPT PLT 180-210 (1)	1	334683	334683	333239	333239	333239
	MTR ADPT PLT-BOLT ON 210 (2)	1	-----	-----	334571	334571	334571
	MTR ADPT PLT-BOLT ON 250 (2)	1	-----	-----	-----	334570	334570
20-22	SHIM KIT	1	335332	335333	335333	335334	335335
23-24	BEARING CUP/CONE ASSEMBLY	2	41162601BJ	335341	335341	335342	335343
25	INT RING	2	278715	411637-02-AC	278717	51334	51335
26	EXT RING	1	411637-02-AP	411637-02-AR	411637-02-BA	334404	333933
27	DUST CAP 1" HOLE	1	411709-65-Q	411709-65-Q	411709-65-Q	411709-65-Q	411709-65-Q
28	56/140 M/A. GASKET	1	602028-43-F	602028-43-F	602028-43-F	-----	-----
28	MOTOR GASKET 180-210	1	276335	276335	276335	276335	276335
29	TIG2 HOLLOW GEAR	1	See Gear Chart	See Gear Chart	See Gear Chart	See Gear Chart	See Gear Chart
30	TIG2 WORMSHAFT	1	See Gear Chart	See Gear Chart	See Gear Chart	See Gear Chart	See Gear Chart

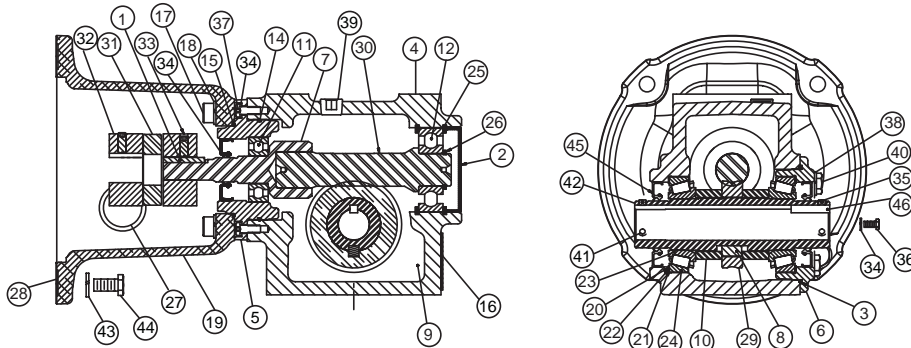
(2) Adpt plate bolts onto 180 adpt 333239.

FEATURES/BENEFITS PAGE G4-2	SPECIFICATION PAGE G4-8	NOMENCLATURE PAGE G4-9	MODIFICATION/ACCESSORIES PAGE G4-90
--------------------------------	----------------------------	---------------------------	--

RENEWAL PARTS



TIGEAR-2 Coupled Input / Hollow Output Sizes 26 - 47



Ref No	Description	Qty	26	30	35	40	47
			Part Number	Part Number	Part Number	Part Number	Part Number
31	SPIDER 56C	1	278911	278911	-----	-----	-----
	SPIDER 140TC	1	278912	278912	278912	278907	-----
	SPIDER 180TC	1	275794	275794	275794	275794	275794
	SPIDER 210-250	1	-----	-----	334291	334291	334291
32	5/8 COUPLING HUB-MOTOR 56C	1	278900	278900	-----	-----	-----
	7/8 COUPLING HUB-MOTOR 140TC	1	276169	276169	276169	-----	-----
	1-1/8 COUPLING HUB-MTR 180TC	1	278907	278907	278907	278907	278907
	1-3/8 COUPLING HUB-MTR 210TC	1	-----	-----	334286	334286	334286
	1-5/8 COUPLING HUB-MTR 250TC	1	-----	-----	-----	334288	334288
33	COUPLING - REDUCER 56C	1	278901	278901	-----	-----	-----
	COUPLING - REDUCER 140TC	1	276169	276169	276169	-----	-----
	COUPLING - REDUCER 180TC	1	275806	275806	275806	278907	278907
	COUPLING - REDUCER 210-250	1	-----	-----	334285	334290	334290
34	MED LOCKWASHER	4	419009	419009	419009	419009	419009
35	SET SCREW	2	400140	400140	400140	400140	275953
36	HHCS GR5 ZC	2	51302	411397	411396	411396	411402
37	LHHCS PLAIN	2	333807	333807	333807	333807	333807
38	MED LOCKWASHER	4	275803	275855	275855	419036	419036
39	PIPE PLUG 1/4" SOC.	2	411647-34-B	411647-34-B	411647-34-B	411647-34-B	411647-34-B
40	HEX HEAD CAP SCREW	4	51929	51952	51952	411483	411484
41	SET SCREW	4	275962	275954	275954	333805	333805
42	HOLLOW OUTPUT SHAFT	1	333634	333635	333636	334556	334621
43	LOCK WASHER 56-140	4	275803	275803	275803	-----	-----
	LOCK WASHER 210	4	-----	-----	275853	275853	275853
	LOCK WASHER 250	4	-----	-----	-----	275853	275853
44	3/8-16 X 1 HHCS PLN ZC 56-140	4	51929	51929	51929	-----	-----
	SOCKET HEAD CAP SCR 180	4	411631-63-A	411631-63-A	411631-58-X	411631-58-X	411631-58-X
	HEX HD CAP SCREW 210	4	-----	-----	275845	275845	275845
	HEX HD CAP SCREW 250	4	-----	-----	-----	276447	276447
45	SEAL TIGEAR 2, OUTPUT	2	334278	334279	334279	334280	334281
46	OUTPUT KEY	2	333687	333709	333709	334563	334623

FEATURES/BENEFITS PAGE G4-2	SPECIFICATION PAGE G4-8	NOMENCLATURE PAGE G4-9	MODIFICATION/ACCESSORIES PAGE G4-90
--------------------------------	----------------------------	---------------------------	--

NOTES

FEATURES/BENEFITS PAGE G4-2	SPECIFICATION PAGE G4-8	NOMENCLATURE PAGE G4-9	MODIFICATION/ACCESSORIES PAGE G4-90
--------------------------------	----------------------------	---------------------------	--