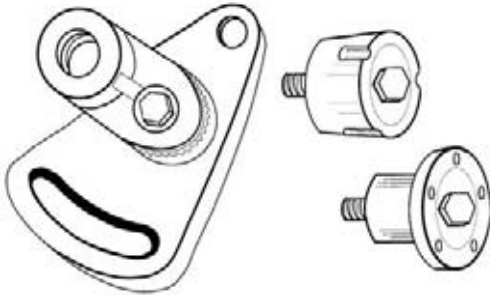




Idler Brackets and Bushings



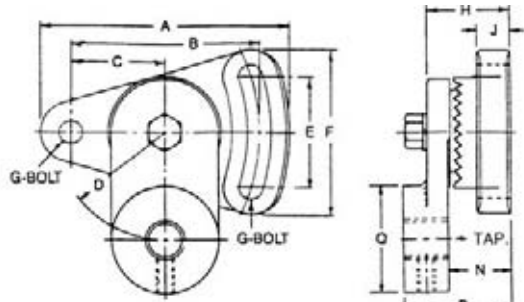
- Double Adjustable Bracket for Maximum Flexibility
- Positive Ratchet Locking Between Base and Arm
- Idler Bushings in TAPER-LOCK® and QD* Style
- Use with Stock Products, such as: Sheaves, Roller Chain Sprockets, HTD Sprockets · Compatible with Products Machined for: TAPER-LOCK 1610, 2012 and 2517 Bushings QD SK, SF and E Bushings

*QD is a registered trademark of Emerson Electric.

BRACKET SPECS

		Model No.		
		5	10	20
Part Number		115982	115986	115987
WT.		3.40	3.40	13.50
DIM.	A	4.62	4.63	6.94
	B	3.50	3.50	5.25
	C	1.75	1.75	2.62
	D	2.00	2.00	5.00
DIM.	E	2.06	2.06	3.00
	F	3.06	3.06	4.56
	G	3/8	3/8	5/8
	H	1.63	1.63	2.38
DIM.	J	0.62	0.62	0.88
	N	1.16	1.16	1.63
	P	2.01	2.01	2.94
	Q	2.00	2.00	3.00
THD		5/8-18	3/4-16	1-14

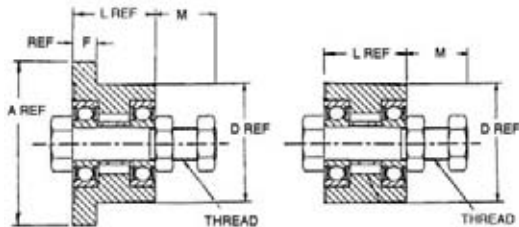
IDLER BRACKETS



BUSHING SPECS

Taper-Lock		1610-IDL	2012-IDL	2517-IDL
Part Number For Brkt No.		115985 5	115983 10	115984 10
DIM.	D	2.25	2.75	3.38
	L	1.00	1.25	1.75
	M	1.38	1.56	1.56
THD		5/8 -18	3/4-16	3/4-16
WT.		1.0	1.6	3.0
Bearings		6003	6204	6304

IDLER BUSHINGS



QD		SH-IDL	SD-IDL	SK-IDL	SK-IDL - Large	SF-IDL	E-IDL	E-IDL - Large
Part Number		15978	15979	115988	115980	115989	115990	424063
For Brkt No.		-	-	10	-	20	20	-
DIM.	A	2.63	3.18	3.88	3.88	4.63	6.0	6.00
	D	1.88	2.18	2.81	2.81	3.13	3.83	3.83
	F	0.43	0.43	.56	0.56	.63	.88	0.88
	L	1.31	1.81	1.94	1.94	2.08	2.75	2.75
	M	1.69	1.69	1.44	1.44	2.13	2.19	2.19
	Thd.	3/4-10	3/4-10	3/4-16	3/4-16	1-14	1-14	1-1/4 - 12
Wt.		2.1	2.5	2.8	2.8	5	8.6	12.5
Bearings		6004	6204	6304	6206	6206	6306	6307

QD STOCK SIZES PAGE PT6-17	QD METRIC BORES PAGE PT6-22	QD HUBS PAGE PT6-25	T-L BUSHINGS, HUBS PAGE PT6-12
-------------------------------	--------------------------------	------------------------	-----------------------------------



NOTES



TORQUE-TAMER

Bushings

V-Drives

FHP

Drives Component Accessories

QD STOCK SIZES
PAGE PT6-17

QD METRIC BORES
PAGE PT6-22

QD HUBS
PAGE PT6-25

T-L HUBS
PAGE PT6-12