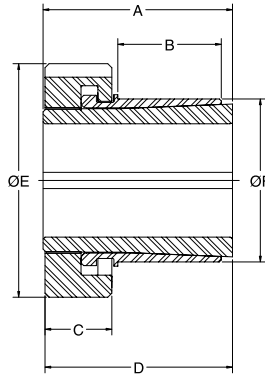




SPECIFICATION



GRIP TIGHT™ Bushings - Dimensions



Shaft Size	Series	Part Number	A	B	C	D	E	F +.002/-0.000	Recommended Housing Bore Tolerance	Locknut Rotation From Zero
1	205	111940	1.46	.80	.52	1.43	1.80	1.256	+0.0040" - 0	2/3 Turn
1-3/16	206	111941	1.61	.94	.53	1.58	2.00	1.445	+0.0040" - 0	2/3 Turn
1-7/16	207	111942	1.62	.98	.53	1.59	2.30	1.693	+0.0040" - 0	2/3 Turn
1-1/2	208	111943	1.84	1.12	.53	1.81	2.50	1.932	+0.0040" - 0	2/3 Turn
1-11/16	209	111944	1.85	1.15	.53	1.82	2.67	2.080	+0.0047" - 0	2/3 Turn
1-15/16	210	111945	1.86	1.16	.53	1.83	2.94	2.312	+0.0047" - 0	1 Turn
2-3/16	211	111946	1.93	1.23	.53	1.90	3.25	2.564	+0.0047" - 0	1 Turn
2-7/16	212	111947	2.12	1.33	.60	2.09	3.50	2.782	+0.0047" - 0	1 Turn
2-11/16	214	111948	2.39	1.59	.62	2.36	3.81	3.083	+0.0047" - 0	1 Turn
2-15/16	215	111949	2.56	1.66	.75	2.53	4.25	3.410	+0.0055" - 0	1 Turn

