



SPECIFICATION



TORQUE-TAMER

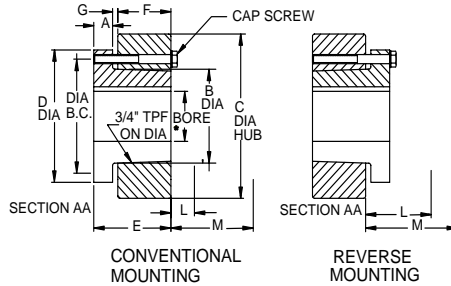
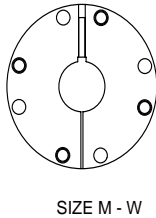
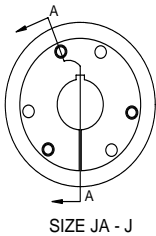
Bushings

V-Drives

FHP

Drives Component Accessories

QD Bushings - Dimensions



QD BUSHING RATINGS AND DIMENSIONS

Bush. Symb.	Ratings (Lb-in) Bush. Torque Cap.*	Bore Range				Dimensions							
		Min.	Max. Bore for:			A	B Dia.	C Hub Dia.		D Dia.	E	F	G
			Full KW	Shallow KW	No KW			Cl 30 Iron	Steel				
QT	1000	3/8	1-1/4	1-1/2	1-9/16	0.25	1.625	3.00	2.375	2.50	1.25	0.94	0.12
JA	1000	1/2	1	1-3/16	1-1/4	0.31	1.38	3.93	2.25	2.00	1.00	0.56	0.12
SH	3500	1/2	1-3/8	1-5/8	1-11/16	0.43	1.88	4.75	3.00	2.63	1.31	0.81	0.12
SDS	5000	1/2	1-5/8	1-15/16	2	0.43	2.18	4.75	3.50	3.18	1.31	0.75	0.12
SD	5000	1/2	1-5/8	1-15/16	2	0.43	2.18	3.81	3.50	3.18	1.81	1.25	0.12
SK	7000	1/2	2-1/8	2-1/2	2-5/8	0.56	2.81	4.75	4.50	3.88	1.93	1.25	0.22
SF	11000	1/2	2-5/16	2-15/16	...	0.63	3.13	6.38	5.50	4.63	2.06	1.25	0.22
E	20000	7/8	2-7/8	3-1/2	...	0.88	3.83	7.50	6.50	6.00	2.75	1.63	0.25
F	30000	1	3-1/4	3-15/16	4	1.00	4.43	7.75	7.25	6.63	3.75	2.50	0.34
J	45000	1-1/2	3-3/4	4-1/2	...	1.13	5.14	9.00	8.00	7.25	4.63	3.18	0.38
M	85000	2	4-3/4	5-1/2	...	1.25	6.50	11.38	10.00	9.00	6.75	5.18	0.41
N	150000	2-7/16	5	6	...	1.50	7.00	12.00	...	10.00	8.12	6.25	0.56
P	250000	2-15/16	5-15/16	7	...	1.75	8.25	14.00	...	11.75	9.38	7.25	0.63
W	375000	4	7-1/2	8-1/2	...	2.00	10.42	17.00	...	15.00	11.38	9.00	0.50
S	625000	5-1/2	9	10	...	2.75	12.13	19.00	...	17.75	15.25	12.00	0.75

* Torque ratings apply when bushing installation screws are tightened to listed torque. Important: Do not over-torque screws. This can lead to hub damage

INSTALLATION INFORMATION

Bush. Symb.	Installation Screws				Required Wrench Clearance							
	B. C. Dia.	Qty.	Size	Screw Torque*	Conventional Mounting				Reverse Mounting			
					L-Install		M-Remove		L-Install		M-Remove	
					#	@	#	@	#	@	#	@
QT	2	2	1/4-20 x 7/8	90	0.31	2.43	1.03	3.15	1.03	3.15	1.46	3.58
JA	1.65	3	10-24 x 1	54	0.41	2.53	1.13	3.25	1.13	3.25	1.56	3.68
SH	2.25	3	1/4 x 1-3/8	108	0.59	2.66	1.56	3.63	1.56	3.63	2.13	4.18
SDS	2.69	3	1/4 x 1-3/8	108	0.59	2.66	1.56	3.63	1.56	3.63	2.13	4.18
SD	2.69	3	1/4 x 1-7/8	108	0.66	2.72	2.06	4.13	2.06	4.13	2.63	4.68
SK	3.31	3	5/16 x 2	180	0.78	2.72	2.25	4.25	2.31	4.31	2.38	5.00
SF	3.88	3	3/8 x 2	360	0.91	2.91	2.38	4.36	2.43	4.43	3.32	5.31
E	5.00	3	1/2 x 2-3/4	720	1.25	3.19	3.13	5.06	3.18	5.13	4.43	6.38
F	5.63	3	9/16 x 3-5/8	900	1.28	3.10	4.13	5.94	4.18	6.00	5.50	7.31
J	6.25	3	5/8 x 4-1/2	1620	1.41	3.22	4.94	6.75	3.93	5.75	5.50	7.31
M	7.88	4	3/4 x 6-3/4	2700	2.16	4.03	7.69	9.56
N	8.50	4	7/8 x 8	3600	2.28	...	9.25
P	10.00	4	1 x 9-1/2	5400	3.13	...	10.88
W	12.75	4	1-1/8 x 11-1/2	7200	3.88	...	13.38
S	15.00	5	1-1/4 x 15	9000	3.75	...	16.50

Using Open-End Wrench

* Lb - in

OD STOCK SIZES PAGE PT6-17	OD METRIC BORES PAGE PT6-22	OD HUBS PAGE PT6-25	T-L HUBS PAGE PT6-12
-------------------------------	--------------------------------	------------------------	-------------------------



QD Bushings - Stock Bore

QD Bush Size	BORE	P/N Keyway	WT.	Bushing Keyway	Shaft Keyway REF	Key Size REF			
QT	3/8"	121129	0.85	None					
	7/16"	121130	0.82						
	1/2"	121131	0.81						
	9/16"	121133	0.80	1/8 x 1/16	1/8 x 1/16	1/8 x 1/8			
	5/8"	122050	0.78	3/16 x 3/32	3/16 x 3/32	3/16 x 3/16			
	11/16"	121134	0.76						
	3/4"	121162 +	0.74						
	3/4"	122051	0.74						
	13/16"	121136	0.70						
	7/8"	121163 +	0.68						
	7/8"	122052	0.68						
	15/16"	121138	0.66	1/4 x 1/8	1/4 x 1/8	1/4 x 1/4			
	1"	121164 +	0.62						
	1"	122053	0.62						
	1-1/16"	121140	0.59						
	1-1/8"	121186 +	0.56						
	1-1/8"	122054	0.56						
	1-3/16"	121187 +	0.52						
	1-3/16"	122055	0.52						
	1-1/4"	122056	0.49						
1-5/16"	121144	0.44							
1-3/8"	121145	0.43	5/16 x 1/16	5/16 x 5/32	5/16 x 7/32 Δ				
1-7/16"	121146	0.38	3/8 x 1/16	3/8 x 3/16	3/8 x 1/4 Δ				
1-1/2"	121147	0.34							
14MM	121148	0.79	6 x 2.8MM	6 x 3.5MM	6 x 6MM				
19MM	121149	0.74							
20MM	121467	0.73							
24MM	121150	0.61	8 X 3.3MM	8 X 4MM	8 X 7MM				
25MM	121151	0.63							
28MM	151152	0.57							
30MM	121153	0.53							
32MM	121154	0.50							
JA	1/2"	120332	0.46	1/8 x 1/16	1/8 x 1/16	1/8 x 1/8			
	9/16"	120333	0.46						
	5/8"	120334	0.45						
	11/16"	120335	0.43	3/16 x 3/32	3/16 x 3/32	3/16 x 3/16			
	3/4"	120336	0.41						
	13/16"	120337	0.40						
	7/8"	120338	0.37						
	15/16"	120339	0.35	1/4 x 1/8	1/4 x 1/8	1/4 x 1/4			
	1"	120340	0.33						
	1-1/16"	120341	0.34	1/4 x 1/16	1/4 x 1/8	1/4 x 3/16 Δ			
1-1/8"	120342	0.31							
1-3/16"	120343	0.29							
1-1/4"	120344	0.25							
SH	1/2"	120345	1.16	1/8 x 1/16	1/8 x 1/16	1/8 x 1/8			
	9/16"	120346	1.14						
	5/8"	120347	1.14	3/16 x 3/32	3/16 x 3/32	3/16 x 3/16			
	11/16"	120348	1.14						
	3/4"	120349	1.10						
	13/16"	120350	1.07						
	7/8"	120351	1.04						
	15/16"	120352	1.00	1/4 x 1/8	1/4 x 1/8	1/4 x 1/4			
	1"	120353	0.98						
	1-1/16"	120354	0.94						
	1-1/8"	120355	0.91						
	1-3/16"	120356	0.88						
	1-1/4"	120357	0.84						
	1-5/16"	120358	0.82				5/16 x 5/32	5/16 x 5/32	5/16 x 5/16
	1-3/8"	120359	0.80						
	1-7/16"	120360	0.79	3/8 x 1/16	3/8 x 3/16	3/8 x 1/4 Δ			
	1-1/2"	120361	0.75						
	1-9/16"	120362	0.90						
	1-5/8"	120363	0.64						
	1-11/16"	120580	0.55						
SDS	24MM	120088	1.00	8 X 3.3MM	8 X 4MM	8 X 7MM			
	25MM	120089	0.99						
	28MM	120090	0.93						
	30MM	120091	0.87						
	32MM	120092	0.82						
	35MM	120093	0.74	10 X 3.3MM	10 X 5MM	10 X 8MM			
	SH (Cont)	1/2"	120388	1.65	1/8 x 1/16	1/8 x 1/16	1/8 x 1/8		
		9/16"	120389	1.65					
		5/8"	120390	1.61	3/16 x 3/32	3/16 x 3/32	3/16 x 3/16		
		11/16"	120391	1.60					
		3/4"	120392	1.58					
		13/16"	120393	1.54					
		7/8"	120394	1.54	1/4 x 1/8	1/4 x 1/8	1/4 x 1/4		
		15/16"	120395	1.50					
		1"	120396	1.46					
		1-1/16"	120397	1.43					
		1-1/8"	120398	1.38					
		1-3/16"	120399	1.36	5/16 x 5/32	5/16 x 5/32	5/16 x 5/16		
		1-1/4"	120400	1.32					
		1-5/16"	120401	1.26					
1-3/8"		120402	1.24	3/8 x 3/16	3/8 x 3/16	3/8 x 3/8			
1-7/16"	120403	1.19							
1-1/2"	120404	1.15							
1-9/16"	120405	1.11							
1-5/8"	120406	1.08							
1-11/16"	120407	1.08							
1-3/4"	120408	1.02							
1-13/16"	120409	0.98							
1-7/8"	120410	0.92							
1-15/16"	120411	0.87							
2"	120412	0.77	None						
SD	24MM	120094	1.47	8 X 3.3MM	8 X 4MM	8 X 7MM			
	25MM	120095	1.47						
	28MM	120096	1.41						
	30MM	120097	1.36						
	32MM	120098	1.31						
	35MM	120099	1.22	10 X 3.3MM	10 X 5MM	10 X 8MM			
	38MM	120100	1.00	12 X 3.3MM	12 X 5MM	12 X 8MM			
	40MM	120101	1.01						
	42MM	120102	1.02						
	1/2"	120364	2.07	1/8 x 1/16	1/8 x 1/16	1/8 x 1/8			
	9/16"	120365	2.05						
	5/8"	120366	2.03	3/16 x 3/32	3/16 x 3/32	3/16 x 3/16			
	11/16"	120367	2.00						
	3/4"	120368	2.00						
	13/16"	120369	2.00						
7/8"	120370	1.88	1/4 x 1/8	1/4 x 1/8	1/4 x 1/4				
15/16"	120371	1.85							
1"	120372	1.80							
1-1/16"	120373	1.79							
1-1/8"	120374	1.72							
1-3/16"	120375	1.67	5/16 x 5/32	5/16 x 5/32	5/16 x 5/16				
1-1/4"	120376	1.62							
1-5/16"	120377	1.55							
1-3/8"	120378	1.50	3/8 x 3/16	3/8 x 3/16	3/8 x 3/8				
1-7/16"	120379	1.44							
1-1/2"	120380	1.36							
1-9/16"	120381	1.29							
1-5/8"	120382	1.29							
1-11/16"	120383	1.20							
1-3/4"	120384	1.19				3/8 x 1/8	3/8 x 3/16	3/8 x 5/16 Δ	
1-13/16"	120385	1.15							
1-7/8"	120386	1.07				1/2 x 1/16	1/2 x 1/4	1/2 x 5/16 Δ	
1-15/16"	120387	1.00							
2"	120581	0.84	None						

Δ Key furnished for these sizes ONLY
+ Integral Key Bushings

QD STOCK SIZES PAGE PT6-17	QD METRIC BORES PAGE PT6-22	QD HUBS PAGE PT6-25	T-L HUBS PAGE PT6-12
-------------------------------	--------------------------------	------------------------	-------------------------



SPECIFICATION



QD Bushings - Stock Bore

QD Bush Size	BORE	P/N Keyway	WT.	Bushing Keyway	Shaft Keyway REF	Key Size REF
SD (Cont'd)	24MM	120103	1.84	8 X 3.3MM	8 X 4MM	8 X 7MM
	25MM	120104	1.82			
	28MM	120105	1.72			
	30MM	120106	1.66	10 X 3.3MM	10 X 5MM	10 X 8MM
	32MM	120107	1.58			
	35MM	120108	1.49			
38MM	120109	1.37				
40MM	120110	1.28	12 X 3.3MM	12 X 5MM	12 X 8MM	
42MM	120111	1.18				
SK	1/2"	120413	3.77	1/8 x 1/16	1/8 x 1/16	1/8 x 1/8
	9/16"	120414	3.74			
	5/8"	120415	3.72	3/16 x 3/32	3/16 x 3/32	3/16 x 3/16
	11/16"	120416	3.70			
	3/4"	120417	3.61			
	13/16"	120418	3.53			
	7/8"	120419	3.58	1/4 x 1/8	1/4 x 1/8	1/4 x 1/4
	15/16"	120420	3.52			
	1"	120421	3.45			
	1-1/16"	120422	3.41			
	1-1/8"	120423	3.37			
	1-3/16"	120424	3.31			
	1-1/4"	120425	3.31	5/16 x 5/32	5/16 x 5/32	5/16 x 5/16
	1-5/16"	120426	3.18			
	1-3/8"	120427	3.12			
	1-7/16"	120428	3.08			
	1-1/2"	120429	3.00	3/8 x 3/16	3/8 x 3/16	3/8 x 3/8
	1-9/16"	120430	2.95			
	1-5/8"	120431	2.86			
	1-11/16"	120432	2.79			
	1-3/4"	120433	2.88			
	1-13/16"	120434	2.62			
	1-7/8"	120435	2.50			
	1-15/16"	120436	2.42			
2"	120437	2.32				
2-1/16"	120438	2.26	1/2 x 3/16	1/2 x 1/4	1/2 x 7/16 Δ	
2-1/8"	120439	2.17				
2-3/16"	120440	2.21				
2-1/4"	120441	2.09				
2-5/16"	120442	2.00				
2-3/8"	120443	1.91				
2-7/16"	120444	1.81	5/8 x 1/16	5/8 x 5/16	5/8 x 3/8 Δ	
2-1/2"	120445	1.72				
2-5/8"	120447	1.32				
None						
24MM	120112	2.00	8 X 3.3MM	8 X 4MM	8 X 7MM	
25MM	120113	2.00				
28MM	120114	2.00				
30MM	120115	2.00				
32MM	120116	2.00	10 X 3.3MM	10 X 5MM	10 X 8MM	
35MM	120117	2.00				
38MM	120118	2.00				
40MM	120119	2.00				
42MM	120120	2.00	12 X 3.3MM	12 X 5MM	12 X 8MM	
45MM	120070	2.00				
48MM	120121	2.00				
50MM	120122	2.00				
55MM	120123	2.00	16 X 4.3MM	16 X 6MM	16 X 10MM	
SF	1/2"	120448	5.27	1/8 x 1/4	1/8 x 1/4	1/8 x 1/8
	9/16"	120449	5.27			
	5/8"	120450	5.22	3/16 x 3/32	3/16 x 3/32	3/16 x 3/16
	11/16"	120451	5.20			
	3/4"	120452	5.17			
	13/16"	120453	5.32			
	7/8"	120454	5.08			

QD Bush Size	BORE	P/N Keyway	WT.	Bushing Keyway	Shaft Keyway REF	Key Size REF
SF (Cont'd)	15/16"	120455	5.05	1/4 x 1/8	1/4 x 1/8	1/4 x 1/4
	1"	120456	5.00			
	1-1/16"	120457	4.95			
	1-1/8"	120458	4.90			
	1-3/16"	120459	4.83			
	1-1/4"	120460	4.77			
	1-5/16"	120461	4.71	5/16 x 5/32	5/16 x 5/32	5/16 x 5/16
	1-3/8"	120462	4.61			
	1-7/16"	120463	4.57	3/8 x 3/16	3/8 x 3/16	3/8 x 3/8
	1-1/2"	120464	4.48			
	1-9/16"	120465	4.42			
	1-5/8"	120466	4.32			
	1-11/16"	120467	4.31			
	1-3/4"	120468	4.16			
	1-13/16"	120469	4.06	1/2 x 1/4	1/2 x 1/4	1/2 x 1/2
	1-7/8"	120470	4.00			
	1-15/16"	120471	3.87			
	2"	120472	3.78			
	2-1/16"	120473	3.70			
	2-1/8"	120474	3.57			
	2-3/16"	120475	3.45	5/8 x 5/16	5/8 x 5/16	5/8 x 5/8
	2-1/4"	120476	3.38			
	2-5/16"	120477	3.32			
	2-3/8"	120478	3.39			
2-7/16"	120479	3.26	5/8 x 3/16	5/8 x 5/16	5/8 x 5/16 Δ	
2-1/2"	120592	3.16				
2-5/8"	120482	2.91	5/8 x 1/16	5/8 x 5/16	5/8 x 3/8 Δ	
2-11/16"	120483	2.80				
2-3/4"	120484	2.59				
2-13/16"	120485	2.50				
2-7/8"	120486	2.35	3/4 x 1/8	3/4 x 3/8	3/4 x 1/2 Δ	
2-15/16"	120487	2.22				
28MM	120124	2.00	8 X 3.3MM	8 X 4MM	8 X 7MM	
30MM	120125	2.00				
32MM	120126	2.00	10 X 3.3MM	10 X 5MM	10 X 8MM	
35MM	120127	2.00				
38MM	120128	2.00				
40MM	120129	2.00				
42MM	120130	2.00	12 X 3.3MM	12 X 5MM	12 X 8MM	
45MM	120071	2.00				
48MM	120131	2.00				
50MM	120132	2.00				
55MM	120133	2.00	16 X 4.3MM	16 X 6MM	16 X 10MM	
60MM	120134	2.00				
E	7/8"	120488	11.80	3/16 x 3/32	3/16 x 3/32	3/16 x 3/16
	1"	120490	11.65			
	1-1/8"	120492	11.46	1/4 x 1/8	1/4 x 1/8	1/4 x 1/4
	1-3/16"	120493	11.40			
	1-1/4"	120494	11.33			
	1-5/16"	120495	11.26			
	1-3/8"	120496	11.20	5/16 x 5/32	5/16 x 5/32	5/16 x 5/16
	1-7/16"	120497	11.13			
	1-1/2"	120498	10.86	3/8 x 3/16	3/8 x 3/16	3/8 x 3/8
	1-9/16"	120499	10.82			
	1-5/8"	120500	10.69			
	1-11/16"	120501	10.56			
1-3/4"	120502	10.46				
1-7/8"	120504	10.16				
1-15/16"	120505	10.16	1/2 x 1/4	1/2 x 1/4	1/2 x 1/2	
2"	120506	10.01				
2-1/16"	120507	9.85				
2-1/8"	120508	9.73				
2-3/16"	120509	9.42				
2-1/4"	120510	9.42				

Δ Key furnished for these sizes ONLY

OD STOCK SIZES PAGE PT6-17	OD METRIC BORES PAGE PT6-22	OD HUBS PAGE PT6-25	T-L HUBS PAGE PT6-12
-------------------------------	--------------------------------	------------------------	-------------------------



QD Bushings - Stock Bore

QD Bush Size	BORE	P/N Keyway	WT.	Bushing Keyway	Shaft Keyway REF	Key Size REF			
E (Cont)	2-5/16"	120511	9.07	5/8 x 5/16	5/8 x 5/16	5/8 x 5/8			
	2-3/8"	120512	8.95						
	2-7/16"	120513	8.77						
	2-1/2"	120514	8.72						
	2-5/8"	120516	8.37						
	2-11/16"	120517	8.05						
	2-3/4"	120518	7.90						
	2-13/16"	120519	7.70				3/4 x 3/8	3/4 x 3/8	3/4 x 3/4
	2-7/8"	120520	7.32						
	2-15/16"	120521	7.53				3/4 x 1/8	3/4 x 3/8	3/4 x 1/2 Δ
	3"	120522	7.31						
	3-1/8"	120524	6.90						
	3-3/16"	*120525	6.69						
	3-1/4"	120526	6.48						
	3-5/16"	120527	6.10						
	3-3/8"	120528	6.21	7/8 x 1/16	7/8 x 7/16	7/8 x 1/2 Δ			
	3-7/16"	120529	5.86						
	3-1/2"	120530	5.73						
	28MM	120073	10.20	8 X 3.3MM	8 X 4MM	8 X 7MM			
	30MM	120074	10.20						
32MM	120075	10.20	10 X 3.3MM	10 X 5MM	10 X 8MM				
35MM	120135	10.20							
38MM	120136	10.00							
40MM	120137	10.88	12 X 3.3MM	12 X 5MM	12 X 8MM				
42MM	120138	9.80							
45MM	120141	9.60	14 X 3.8MM	14 X 5.5MM	14 X 9MM				
48MM	120139	10.26							
50MM	120140	10.06							
55MM	120142	9.56							
60MM	120143	9.10	18 X 4.4MM	18 X 7MM	18 X 11MM				
65MM	120144	9.60							
70MM	120145	7.87	20 X 4.9MM	20 x 7.5MM	20 X 12MM				
75MM	120146	7.28							
F	1"	120531	19.41	1/4 x 1/8	1/4 x 1/8	1/4 x 1/4			
	1-1/8"	120533	19.15						
	1-3/16"	120534	18.00						
	1-1/4"	120535	18.99						
	1-3/8"	120537	18.68						
	1-7/16"	120538	18.56	3/8 x 3/16	3/8 x 3/16	3/8 x 3/8			
	1-1/2"	120539	18.48						
	1-9/16"	120540	18.40						
	1-5/8"	120541	18.15						
	1-11/16"	120542	17.91						
	1-3/4"	120543	16.77						
	1-13/16"	120544	17.62				1/2 x 1/4	1/2 x 1/4	1/2 x 1/2
	1-7/8"	120545	16.41						
	1-15/16"	120546	16.00						
	2"	120547	16.00						
	2-1/16"	120548	16.00						
	2-1/8"	120549	15.95	5/8 x 5/16	5/8 x 5/16	5/8 x 5/8			
	2-3/16"	120550	15.95						
	2-1/4"	120551	15.95						
	2-5/16"	120552	15.95						
2-3/8"	120553	15.50							
2-7/16"	120554	15.50							
2-1/2"	120555	15.37	5/8 x 5/16	5/8 x 5/16	5/8 x 5/8				
2-5/8"	120557	14.86							
2-11/16"	120558	14.50							
2-3/4"	120559	14.37							
2-13/16"	120560	14.00							
2-7/8"	120561	14.02	3/4 x 3/8	3/4 x 3/8	3/4 x 3/4				
2-15/16"	120562	13.47							
3"	120563	13.20							
3-1/8"	120565	12.67							
3-3/16"	120566	12.50							
3-1/4"	120567	12.00							

Δ Key furnished for these sizes ONLY

QD Bush Size	BORE	P/N Keyway	WT.	Bushing Keyway	Shaft Keyway REF	Key Size REF
F (Cont)	3-3/8"	120569	12.00	7/8 x 3/16	7/8 x 7/16	7/8 x 5/8 Δ
	3-7/16"	120570	11.88			
	3-1/2"	120571	11.40			
	3-5/8"	120573	10.53			
	3-11/16"	120574	14.00			
	3-3/4"	120575	9.89			
	3-7/8"	120577	9.26			
	3-15/16"	120578	9.23			
	4"	120579	7.96	None		
	45MM	120076	16.20	14 X 3.8MM	14 X 5.5MM	14 X 9MM
	48MM	120147	16.00			
	50MM	120148	15.80			
	55MM	120149	15.80	16 X 4.3MM	16 X 6MM	16 X 10MM
	60MM	120150	15.80			
	65MM	120151	14.30	18 X 4.4MM	18 X 7MM	18 X 11MM
70MM	120152	14.30				
75MM	120153	13.50	20 X 4.9MM	20 x 7.5MM	20 X 12MM	
80MM	120154	12.55				
85MM	120155	10.60	22 X 5.4MM	22 X 9MM	22 X 14MM	
90MM	120077	10.50				
J	1-1/2"	120600	28.97	3/8 x 3/16	3/8 x 3/16	3/8 x 3/8
	1-5/8"	120601	28.61			
	1-3/4"	120603	28.28			
	1-7/8"	120604	27.79	1/2 x 1/4	1/2 x 1/4	1/2 x 1/2
	1-15/16"	120605	27.53			
	2"	120606	27.33			
	2-1/8"	120607	26.74			
	2-3/16"	120608	26.37			
	2-1/4"	120609	26.32			
	2-3/8"	120610	25.65			
	2-7/16"	120611	25.52			
	2-1/2"	120612	25.05			
	2-5/8"	120613	24.50			
	2-11/16"	120614	24.18			
	2-3/4"	120615	23.86	3/4 x 3/8	3/4 x 3/8	3/4 x 3/4
	2-7/8"	120617	23.15			
	2-15/16"	120618	23.07			
	3"	120619	22.43			
	3-1/8"	120620	21.68			
	3-3/16"	120621	21.35			
3-1/4"	120622	20.98	7/8 x 7/16	7/8 x 7/16	7/8 x 7/8	
3-3/8"	120623	20.33				
3-7/16"	120624	21.13				
3-1/2"	120625	19.58				
3-5/8"	120626	18.44				
3-11/16"	120627	18.04				
3-3/4"	120628	17.62				
3-7/8"	120629	17.94	1 x 1/8	1 x 1/2	1 x 5/8 Δ	
3-15/16"	120630	17.38				
4"	120631	16.62				
4-1/8"	120632	15.69				
4-3/16"	120633	14.55				
4-1/4"	120634	14.68	18 X 4.4MM	18 X 7MM	18 X 11MM	
4-3/8"	120635	14.00				
4-7/16"	120636	13.49				
4-1/2"	120637	12.67				
50MM	120157	26.50	14 X 3.8MM	14 X 5.5MM	14 X 9MM	
55MM	120158	25.60				
60MM	120159	25.82	16 X 4.3MM	16 X 6MM	16 X 10MM	
65MM	120160	25.25				
70MM	120161	24.04	20 X 4.9MM	20 x 7.5MM	20 X 12MM	
75MM	120162	21.90				
80MM	120163	20.90	22 X 5.4MM	22 X 9MM	22 X 14MM	
85MM	120164	20.52				
90MM	120165	18.10	25 X 5.4MM	25 X 9MM	25 X 14MM	
95MM	120166	16.80				
100MM	120167	16.50	28 X 6.4MM	28 X 10MM	28 X 16MM	

QD STOCK SIZES PAGE PT6-17	QD METRIC BORES PAGE PT6-22	QD HUBS PAGE PT6-25	T-L HUBS PAGE PT6-12
-------------------------------	--------------------------------	------------------------	-------------------------



SPECIFICATION



TORQUE-TAMER

Bushings

V-Drives

FHP

Drives Component Accessories

QD Bushings - Stock Bore

QD Bush Size	BORE	P/N Keyway	WT.	Bushing Keyway	Shaft Keyway REF	Key Size REF
M	2"	119900	62.65	1/2 x 1/4	1/2 x 1/4	1/2 x 1/2
	2-1/8"	119901	62.65			
	2-3/16"	119902	61.58			
	2-1/4"	119903	61.14			
	2-3/8"	119904	59.50	5/8 x 5/16	5/8 x 5/16	5/8 x 5/8
	2-7/16"	119905	59.35			
	2-1/2"	119906	59.21			
	2-5/8"	119907	58.69			
	2-3/4"	119908	57.86			
	2-7/8"	119909	56.57			
	2-15/16"	119910	56.17	3/4 x 3/8	3/4 x 3/8	3/4 x 3/4
	3"	119911	56.10			
	3-1/8"	119912	55.82			
	3-3/16"	119913	53.84			
	3-1/4"	119914	53.42			
	3-3/8"	119915	52.06			
	3-7/16"	119916	52.04	7/8 x 7/16	7/8 x 7/16	7/8 x 7/8
	3-1/2"	119917	51.12			
	3-5/8"	119918	50.08			
	3-11/16"	119919	49.00			
	3-3/4"	119920	48.47			
	3-7/8"	119921	47.03			
	3-15/16"	119922	46.26	1 x 1/2	1 x 1/2	1 x 1
	4"	119923	46.09			
	4-1/8"	119924	44.31			
	4-3/16"	119925	43.64			
	4-1/4"	119926	42.81			
	4-3/8"	119927	41.46			
	4-7/16"	119928	40.60	1-1/4 x 5/8	1-1/4 x 5/8	1-1/4 x 1-1/4
	4-1/2"	119929	40.27			
4-11/16"	119930	37.12				
4-3/4"	119931	37.00				
4-7/8"	119932	36.89				
4-15/16"	119933	36.13				
5"	119934	35.66	1-1/4 x 1/4	1-1/4 x 5/8	1-1/4 x 7/8 Δ	
5-1/8"	119899	35.00				
5-3/16"	119894	35.00				
5-1/4"	119935	30.00				
5-7/16"	119936	30.00				
5-1/2"	119937	29.00				
N	2-7/16"	119940	87.57	5/8 x 5/16	5/8 x 5/16	5/8 x 5/8
	2-15/16"	119941	80.00	3/4 x 3/8	3/4 x 3/8	3/4 x 3/4
	3-7/16"	119942	80.00	7/8 x 7/16	7/8 x 7/16	7/8 x 7/8
	3-1/2"	119980	80.00			
	3-3/4"	119943	80.00			
	3-7/8"	119944	80.00			
	3-15/16"	119945	80.00	1 x 1/2	1 x 1/2	1 x 1
	4"	119946	80.00			
	4-3/16"	119947	80.00			
	4-1/4"	119948	80.00			
	4-3/8"	119982	79.00			
	4-7/16"	119949	78.00			
	4-1/2"	119950	77.00			

QD Bush Size	BORE	P/N Keyway	WT.	Bushing Keyway	Shaft Keyway REF	Key Size REF	
N (Con't)	4-11/16"	119983	76.00	1-1/4 x 5/8	1-1/4 x 5/8	1-1/4 x 1-1/4	
	4-3/4"	119951	75.00				
	4-7/8"	119952	74.00				
	4-15/16"	119953	73.00				
	5"	119954	72.00				
	5-1/8"	119955	71.00	1-1/4 x 1/4	1-1/4 x 5/8	1-1/4 x 7/8 Δ	
	5-1/4"	119956	70.00				
	5-7/16"	119957	52.19				
	5-1/2"	119958	49.02				
	5-3/4"	119959	49.00	1-1/2 x 1/8	1-1/2 x 3/4	1-1/2 x 7/8 Δ	
5-7/8"	119960	44.00					
5-15/16"	119961	43.00					
6"	119962	42.00					
P	3-7/16"	119965	134.00	7/8 x 7/16	7/8 x 7/16	7/8 x 7/8	
	3-15/16"	119966	122.00	1 x 1/2	1 x 1/2	1 x 1	
	4-7/16"	119967	122.00				
	4-1/2"	119968	121.00				
	4-3/4"	119969	120.00	1-1/4 x 5/8	1-1/4 x 5/8	1-1/4 x 1-1/4	
	4-7/8"	119985	120.00				
	4-15/16"	119970	119.00				
	5"	119971	115.00				
	5-3/16"	119984	114.00				
	5-7/16"	119972	113.00				
	5-1/2"	119973	100.00	1-1/2 x 3/4	1-1/2 x 3/4	1-1/2 x 1-1/2	
	5-15/16"	119974	94.00				
	6"	119975	92.50				
	6-7/16"	119976	83.50				
	6-1/2"	119977	80.50	1-3/4 x 1/8	1-3/4 x 3/4	1-3/4 x 7/8 Δ	
	7"	119978	68.00				
	W	4-1/4"	120180	260.00	1 x 1/2	1 x 1/2	1 x 1
		4-7/16"	120181	256.60			
4-1/2"		120182	255.40				
4-3/4"		120183	250.00	1-1/4 x 5/8	1-1/4 x 5/8	1-1/4 x 1-1/4	
5"		120186	244.30				
5-3/8"		120188	235.30				
5-1/2"		120189	232.20				
5-3/4"		120190	225.70	1-1/2 x 3/4	1-1/2 x 3/4	1-1/2 x 1-1/2	
5-7/8"		120191	222.30				
5-15/16"		120192	220.00				
6"		120193	218.90				
6-1/2"		120194	215.00				
7"	120196	184.90	1-3/4 x 3/4				1-3/4 x 3/4
7-1/4"	120197	184.40					
7-1/2"	120198	175.80					
8"	120200	159.70					

Δ Key furnished for these sizes ONLY

OD STOCK SIZES PAGE PT6-17	OD METRIC BORES PAGE PT6-22	OD HUBS PAGE PT6-25	T-L HUBS PAGE PT6-12
-------------------------------	--------------------------------	------------------------	-------------------------



QD - Reborable

QD Bush Size	Sintered Steel		Cast Iron		Ductile Iron	
	Bore	P/N	Bore	P/N	Bore	P/N
JA	1/2"	120050				
SH	1/2"	120051			1/2"	119876
SDS	1/2"	120052			1-7/16"	119877
SD	1/2"	120053			1-9/16"	119878
SK	1/2"	120054			2"	119879
SF	1/2"	120055			2-5/16"	119880
E			7/8"	120056	7/8"	119881
F			1"	120057	1"	119882
J			1-1/2"	120058	1-1/2"	119883
M			2"	119938	2"	119884
N			2-7/16"	119963	2-7/16"	119885
P			3-7/16"	119979	3-7/16"	119886
W			4"	120276		

NOTE: All reborable bushings are stocked without sawsplit to facilitate re-machining. Sawsplit must be made in bushing to allow it to compress for proper gripping of the shaft. Factory rebores and keyseat service as listed in MLP price book includes sawsplit

QD - Maximum Bore Capacities

QD Bush Size	Sintered Steel			Cast Iron			Ductile Iron			
	Full Key	Shallow Key	Metric	Full Key	Shallow Key	Metric	Full Key	Shallow Key	No * Key	Metric
JA	1"	1-1/16"	24				1"	1-3/16"	1-1/4"	25
SH	1-1/4"	1-1/4"	30				1-3/8"	1-5/8"	1-11/16"	36
SDS	1-9/16"	1-5/8"	40				1-5/8"	1-15/16"	2"	42
SD	1-9/16"	1-9/16"	40				1-11/16"	1-15/16"	2"	42
SK	2"	2-1/16"	51				2-1/2"	2-1/2"	2-5/8"	55
SF	2-1/4"	2-3/8"	55				2-5/16"	2-15/16"	2-15/16"	60
E				2-3/4"	3"	75	2-7/8"	3-1/2"	3-1/2"	82
F				3-1/4"	3-7/16"	90	3-1/4"	3-15/16"	4"	92
J				3-3/4"	3-7/8"	100	3-3/4"	4-1/2"	4-1/2"	104
M				4-3/4"	5"	120	4-3/4"	5-1/2"	5-1/2"	130
N				5"	5-1/4"	130	5"	6"	6"	135
P				5-15/16"	7"	160	5-15/16"	7"	7"	165
W				7"	8"	200	8"	8-1/2"	8-1/2"	205
S				8-1/2"	10"	250				

NOTE: ISO STANDARD METHOD FOR MEASURING KEYSEAT DEPTH
 MM Bore and Keyway dimensions conform to ISO standard recommendation R773, for "Free" fit

* Verify torque capability. Contact Application Engineering for assistance.

QD STOCK SIZES PAGE PT6-17	QD METRIC BORES PAGE PT6-22	QD HUBS PAGE PT6-25	T-L HUBS PAGE PT6-12
-------------------------------	--------------------------------	------------------------	-------------------------



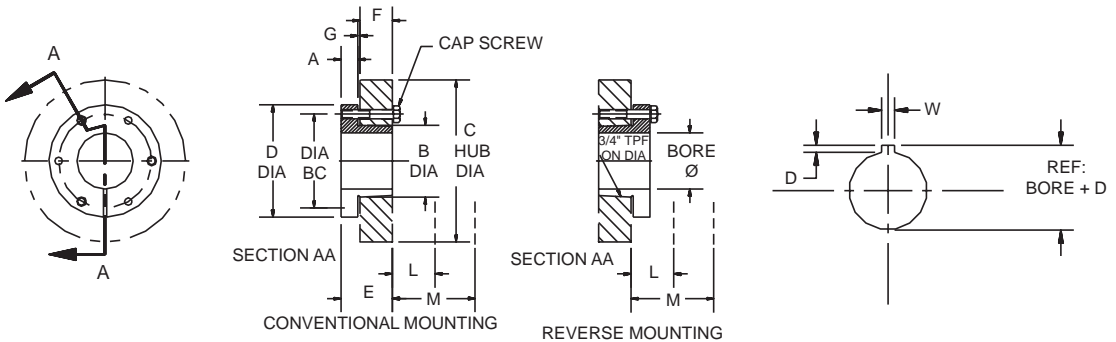
SPECIFICATION



QD Bushing - Metric Bore/Metric Hardware

FEATURES

- ◆ DODGE QD-style bushings stocked in popular finish bore sizes and minimum plain bore, for custom re boring
- ◆ DODGE Metric QD bushings supplied with metric hex-head cap screws and lock washers
- ◆ Stock reborable bushings available for custom re boring
- ◆ Re boring and sawsplit available from DODGE for nominal extra charge
NOTE: Re bore by others must be sawsplit after re bore
- ◆ Can be used with DODGE HTD sprockets for conventional mounting only (*English thread hardware required for demounting.*)





QD Bushing - Metric Bore/Metric Hardware

STOCK REBORABLE BUSHINGS & SPECIFICATIONS

Bush-Sym.	Part No.	Dimensions (MM)										
		Stock Bore	Max Bore *		Amm	Bmm	C Hub Dia		Dmm	Emm	Fmm	Gmm
			-1.00000	-2.00000			Iron	Steel				
QT	119861	12.70	30	35	6.40	41.40	76.20	69.90	63.50	33.30	22.20	4.80
JA	119860	12.70	24	25	7.90	35.10	99.80	57.20	50.80	25.40	14.20	3.10
SH	119862	12.70	30	36	10.90	47.80	120.70	76.20	66.80	33.30	20.60	3.10
SDS	119863	12.70	40	42	10.90	55.40	120.70	88.90	80.80	33.30	19.10	3.10
SD	119864	12.70	40	42	10.90	55.40	96.80	88.90	80.80	46.00	31.80	3.10
SK	119865	12.70	51	55	14.20	71.40	120.70	114.30	98.60	49.00	31.80	5.60
SF	119866	12.70	55	60	16.00	79.50	162.10	139.70	117.60	52.30	31.80	5.60
E	119867	22.20	75	82	22.40	97.30	190.50	165.10	152.40	69.90	41.40	6.40
F	119868	25.40	90	92	25.40	115.50	196.90	184.20	168.40	95.30	63.50	8.60
J	119869	38.10	100	104	28.70	130.60	228.60	203.20	184.20	117.60	80.80	9.70
M	119870	50.80	120	130	31.80	165.10	289.10	254.00	228.60	171.50	131.60	10.40

*Full Key Set (1) Sintered Steel or (2) Ductile Iron will be used depending on max bore size selected

Bushing			Bolt			
Type	Torque Capacity (Nm)	Center Dia (mm)	Qty	Length (mm)	Size	Bolt Torque (Nm)
QT	113	50.8	2	22	M6 x 1	9.6
JA	113	42.3	3	25	M5 x 0.8	5.6
SH	395	57.2	3	35	M6 x 1	11.5
SDS	565	68.3	3	35	M6 x 1	11.5
SD	565	68.3	3	50	M6 x 1	11.5
SK	781	84.1	3	50	M8 x 1.25	20.5
SF	1243	98.4	3	50	M10 x 1.5	34.0
E	2260	127.0	3	70	M12 x 1.75	77.0
F	3390	142.9	3	100	M14 x 2	100.0
J	5085	158.8	3	120	M16 x 2	194.5
M	9600	200.0	4	180	M20 x 2.5	256.0



SPECIFICATION



QD Bushing - Metric Series

METRIC QD BUSHING - METRIC HARDWARE

MM Bore	Bushing No.									MM Keyway	
	QT	JA	SH	SDS	SD	SK	SF	E	F	W	D
19	----	117371	----	----	----	----	----	----	----	6	2.80
20	----	117372	117378	117385	----	----	----	----	----	6	2.80
24	----	117373	117379	117386	117531	117540	----	----	----	8	3.30
25	----	117374*	117380	117387	117532	117541	117553	----	----	8	3.30
28	----	----	117381	117388	117533	117542	117554	117566	117578	8	3.30
30	----	----	117382	117389	117534	117543	117555	117567	117579	8	3.30
32	117358	----	117383*	117390	117535	117544	117556	117568	117580	10	3.30
35	----	----	117384*	117391	117536	117545	117557	117569	117581	10	3.30
38	----	----	----	117392	117537	117546	117558	117570	117582	10	3.30
40	----	----	----	117393	117538	117547	117559	117571	117583	12	3.30
42	----	----	----	117394*	117539*	117548	117560	117572	117584	12	3.30
45	----	----	----	----	----	117549	117561	117573	117585	14	3.80
48	----	----	----	----	----	117550	117562	117574	117586	14	3.80
50	----	----	----	----	----	117551	117563	117575	117587	14	3.80
55	----	----	----	----	----	117552*	117564	117576	117588	16	4.30
60	----	----	----	----	----	----	117565*	117577	117589	18	4.40

* Ductile Iron

TORQUE-TAMER

Bushings

V-Drives

FHP

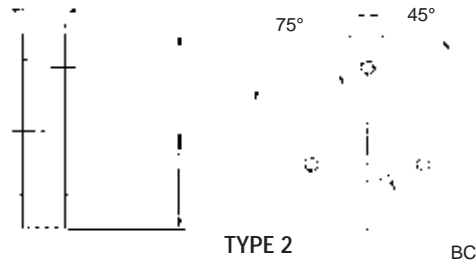
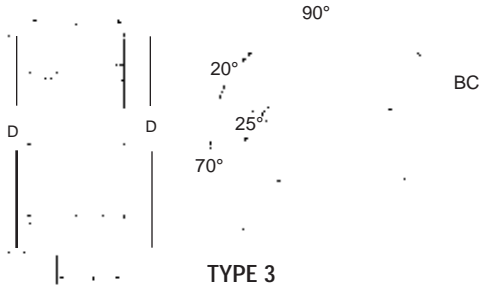
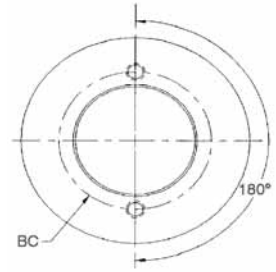
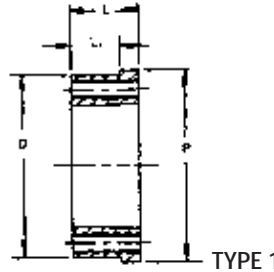
Drives Component Accessories

OD STOCK SIZES PAGE PT6-17	OD METRIC BORES PAGE PT6-22	OD HUBS PAGE PT6-25	T-L HUBS PAGE PT6-12
-------------------------------	--------------------------------	------------------------	-------------------------



QD Hubs

DODGE QD Weld-On hubs are useful for welding into fan rotors, pulleys plate sprockets, impellers, agitators, etc. which require secure mounting to the shaft. These hubs are made of low carbon steel for good welding compatibility. The data tabulation shows the standard QD bushings that are used with these hubs.



QD WELD-ON HUBS

Hub No.	Part No.	For Bush	Bore Range	Wt. Lbs.	Type	Dimensions					Thread Size
						D*	L	BC	P	L1	
QT-A	228465	QT	3/8 to 1-1/2"	0.6	1	2.375	0.88	2.00	2.50	0.17	1/4-20 NC x 3/4
JA-A	228466	JA	1/2 to 1-1/4"	0.4	2	2.250	0.56	1.66	10-24 NC x 1
SH-A	228467	SH	1/2 to 1-11/16"	1.0	2	3.000	0.81	2.25	1/4-20 NC x 1-3/8
SDS-A	228468	SDS	1/2 to 2"	1.3	2	3.500	0.75	2.69	1/4-20 NC x 1-3/8
SK-A	228469	SK	1/2 to 2-5/8"	3.0	2	4.375	1.25	3.31	5/16-18 NC x 2
SF-A	228470	SF	1/2 to 2-15/16"	4.0	2	5.000	1.25	3.88	3/8-16 NC x 2
E-A	228471	E	7/8 to 3-1/2"	9.0	2	6.250	1.63	5.00	1/2-13 NC x 2-3/4
F-A	228472	F	1 to 4"	16.0	2	7.000	2.50	5.63	9/16-12 NC x 3-5/8
J-A	228473	J	1-1/2 to 4-1/2"	22.5	2	7.750	3.19	6.25	5/8-11 NC x 4-1/2
M-A	228474	M	2 to 5-1/2"	50.0	3	9.250	5.19	7.88	9.50	3.56	3/4-10 NC x 6-3/4
N-A	228475	N	2-7/16 to 5-7/8"	75.0	3	10.250	6.25	8.50	10.50	4.50	7/8-9 NC x 8
P-A	228476	P	2-15/16 to 7"	155.0	2	13.000	7.25	10.00	1-8 NC x 9-1/2
W-A	228477	W	4 to 8-1/2"	300.0	2	15.50	9.00	12.75	1-1/16-7 NC x 11-1/2

Mounting:

- Type 1: Reverse only
- Type 2: conventional or Reverse
- Type 3: conventional only

*Tolerance:

- QT-A Thru J-A = (+0.000"/-0.002")
- M-A Thru W-A = (+0.000"/-0.003")

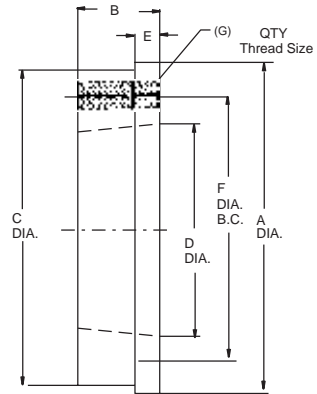
OD STOCK SIZES PAGE PT6-17	OD METRIC BORES PAGE PT6-22	QD HUBS PAGE PT6-25	T-L HUBS PAGE PT6-12
-------------------------------	--------------------------------	------------------------	-------------------------



SPECIFICATION



QD Weld-On Hubs for Conveyor Pulleys



DODGE QD Weld-On Hubs for conveyor pulleys are specifically designed for use in the end disc of a conveyor pulley. Their short length through bore provides more

forgiveness under the operating stresses of the pulley. These hubs are manufactured from low Carbon steel for good welding compatibility.

QD WELD-ON HUBS FOR CONVEYOR PULLEYS

Hub No.	Part No.	For Bush.	Bore Range	Wt. Lbs.	Dimensions						Installation Screws	
					A	B	C #	D (ref)	E	F	Qty	Thread Size
SF	228110	SF	1/2 to 2-15/16"	3.9	5.00	1.00	4.750	3.13	0.44	3.88	3	3/8-16 NC x 2
E	228111	E	7/8 to 3-1/2"	6.6	6.25	1.13	6.000	3.52	0.50	5.00	3	1/2-13 NC x 2-1/4
F	228112	F	1 to 4"	9.3	7.00	1.25	6.750	4.44	0.56	5.63	3	9/16-12 NC x 3-5/8
JS	228113	J	1-1/2 to 4-1/2"	17	8.25	1.63	8.000	5.14	0.63	6.25	3	5/8-11 NC x 2-1/2
MS	228114	M	2 to 5-1/2"	22	9.50	2.38	9.250	6.50	0.75	7.88	4	3/4-10 NC-10 x 3
NS	228115	N	2-7/16 to 5-7/8"	29	10.25	2.38	10.000	7.00	0.81	8.50	4	7/8-9 NC x 3-1/2
PS	228116	P	2-15/16 to 7"	75	12.25	2.88	12.000	8.25	0.88	10.00	4	1-8 NC x 4-1/2
WS	228117	W	4 to 8-1/2"	85	15.25	3.33	14.875	10.42	0.94	12.75	4	1-1/8-7 NC x 5
SS	228118	S	5-1/2 to 10"	139	17.50	3.88	17.000	12.13	1.13	15.00	5	1-1/4-7 NC x 5
ZS	228119	Z	7 to 12"	236	22.00	4.88	21.500	15.98	1.25	19.00	5	1-1/8-7 NC x 5

+.000/- .010" Tolerance