

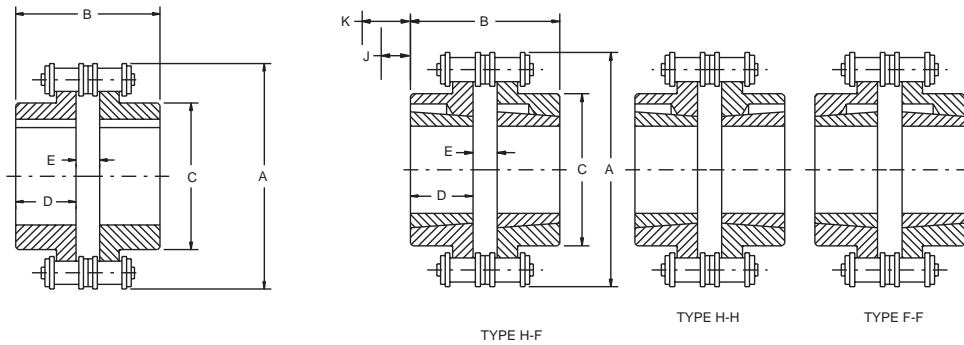


# SELECTION/DIMENSIONS



## Chain Couplings

### STANDARD, STRAIGHT BORE AND TAPER-LOCK -- FLANGES DIMENSIONS, RATINGS



STRAIGHT BORE CHAIN COUPLING

TAPER-LOCK CHAIN COUPLING

## RATINGS

Coupling Size	Straight Bore		TAPER-LOCK		Max. RPM		Weight (lbs.) (1)	
	Min.	Max.	Min.	Max.	Without Cover	With Cover	Str.	TL
4012	1/2	7/8	---	---	875	5000	2.2	---
4016	5/8	1-5/16	1/2	1-1/8	875	5000	3.8	2.7
5012	5/8	1-1/8	---	---	875	---	3.1	---
5016	5/8	1-11/16	---	---	800	4000	5.0	---
5018	3/4	2	1/2	1-11/16	800	4000	6.0	6.0
6018	1	2-7/16	---	---	675	3000	9.9	---
6020	1-1/8	2-3/4	1/2	2-1/8	675	3000	12.25	12.7
8018	1-1/8	3-1/8	---	---	500	2000	31.10	---
8020	1-1/2	3-9/16	7/8	3-1/4	500	2000	33.5	31.1
10020	1-1/2	4-5/8	1-3/16	3-15/16	450	1800	80.0	77.9
12018	2	4-11/16	---	---	400	---	110.0	---
12020	---	---	1-7/16	4-7/16	400	1600	---	135.0

## DIMENSIONS

Coupling Size	A	B		C	D		E		K (2)	J (3)
		Str.	T-L		Str.	T-L	Str.	T-L		
4012	2.41	2.53	---	1.41	1.13	---	0.28	---	---	---
4016	3.03	2.53	2.04	1.97	1.13	0.88	0.28	0.28	0.75	0.63
5012	3.00	2.88	---	1.75	1.25	---	0.38	---	---	---
5016	3.91	3.25	---	2.50	1.44	---	0.38	---	---	---
5018	4.19	3.75	2.38	2.97	1.69	1.00	0.38	0.38	1.06	0.41
6018	5.00	4.23	---	3.50	1.88	---	0.47	---	---	---
6020	5.50	4.47	2.94	3.88	2.00	1.25	0.47	0.47	1.38	0.94
8018	666	5.35	---	4.56	2.38	---	0.59	---	---	---
8020	7.30	5.85	4.59	5.38	2.63	2.00	0.59	0.59	2.06	1.19
10020	9.13	6.97	7.63	6.72	3.13	3.50	0.72	0.72	2.34	1.31
12018	10.00	7.88	---	6.75	3.50	---	0.86	---	---	---
12020	10.94	---	8.75	7.75	---	4.00	---	0.86	3.38	1.63

(1) Weight of complete coupling with cover at maximum bore (5012 & 12018 are without cover).

(2) Space required to loosen bushing with shortened hex key.



## Chain Couplings

### TAPER-LOCK, REBORABLE, FINISHED BORE FLANGES - PART NUMBERS

Bore (in.)	Coupling Size											
	4012	4016	5012	5016	5018	6018	6020	8018	8020	10020	12018	12020
Chain Assembly	100480	100490	100489	100481	100491	100482	100492	100483	100493	100495	100497	100496
TL-H	---	• 099049	---	---	• 099053	---	• 099055	---	• 099057	• 099061	---	• 099063
TL-F	---	• 099048	---	---	• 099052	---	• 099054	---	• 099056	• 099060	---	• 099062
Bushing	---	1108	---	---	1610	---	2012	---	3020	3535	---	4040
Reborable	• 099190	• 099151	• 099150	• 099152	• 099161	• 099153	• 099162	• 099154	• 099163	• 099164	• 099226	
Finished Bore Hubs												
1/2"	• 099100											
5/8"	• 099101	• 099138										
3/4"	• 099102	• 099103	• 099132	• 099141	• 099193							
7/8"		• 099104	• 099133	• 099107	• 099194							
15/16"		• 099139	• 099134									
1"		• 099105	• 099135	• 099108	• 099195	• 099142						
1-1/8"		• 099106	• 099136	• 099109	• 099196	• 099143	• 099209	• 099146				
1-3/16"		• 099191		• 099192	• 099197	• 099206						
1-1/4"		• 099140		• 099110	• 099198	• 099115	• 099210					
1-3/8"				• 099111	• 099199	• 099116						
1-7/16"				• 099112	• 099200	• 099117						
1-1/2"				• 099113	• 099201	• 099118	• 099211		• 099219			
1-5/8"				• 099114	• 099202	• 099119						
1-3/4"					• 099203	• 099120	• 099212	• 099147				
1-7/8"					• 099204	• 099121		• 099125				
1-15/16"					• 099205	• 099122	• 099213	• 099126				
2"						• 099123		• 099126				
2-1/8"							• 099214	• 099127				
2-3/16"							• 099207		• 099220			
2-1/4"							• 099208					
2-3/8"							• 099144	• 099215	• 099128			
2-7/16"							• 099145	• 099216	• 099129	• 099221		
2-5/8"								• 099217	• 099130			
2-11/16"										• 099222		
2-7/8"									• 099131			
2-15/16"									• 099218	• 099223		
3-1/8												
3-3/8										• 099224		
3-7/16										• 099225		

• Stock Sizes

Complete coupling consists of:

- (2) Hubs, TAPER-LOCK, straight bore, or reborable
- (1) Chain Assy, and
- (1) Cover Assy (if required)

**NOTE: For TAPER-LOCK designs, TAPER-LOCK bushings must be ordered separately**

FEATURES/BENEFITS PAGE PT1-57	EASY SELECTION PAGE PT1-59	MODIFICATION/ACCESSORIES PAGE PT1-67	ENGINEERING/TECHNICAL PAGE PT1-69
----------------------------------	-------------------------------	---	--------------------------------------



# SELECTION/DIMENSIONS



## Chain Couplings

### CHAIN COUPLING COVERS

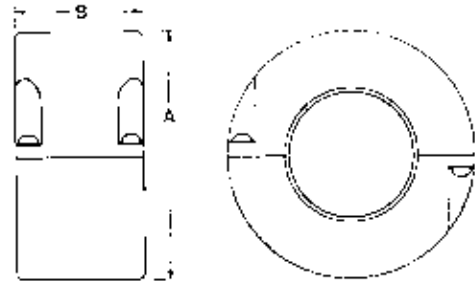
Chain coupling covers are recommended for use when couplings are operating under abrasive or moist conditions, or when coupling speeds exceed the RPM listed in the table below.

Cover should be filled with a roller bearing grease of soft or medium consistency. This provides excellent lubrication and substantially increases coupling life.



### Chain Coupling Cover Recommendation

Coupling Size	Cover required when Coupling RPM exceeds this figure
4012	875
4016	875
5016	800
5018	800
6018	675
6020	675
8018	500
8020	500
10020	450
12020	400



### Chain Coupling Cover Assemblies ▲

For Coupling Size	Cover Size	Part No.	Wt. (lbs.)	A	B
4012	40	099026	1.0	4.00	2.00
4016					
5016	50	099027	1.3	5.13	2.38
5018					
6018	60	099028	2.6	6.38	2.94
6020					
8018	80	099029	5.1	8.19	4.00
8020					
10020	100	099024	12.2	10.13	5.25
12020	120	099025	19.5	12.25	6.13

▲ Consists of (2) cover halves and screws; (4) seals for cover sizes 4012/4016 thru 8012/8020; (2) seals for cover sizes 10020 and 12020; and (2) cover gaskets.

