



# SELECTION/DIMENSIONS



## Clutch/Brake Modules

### SELECTION

#### DMC Selection by NEMA Frame Size

Frame Size	Module Size
56C	DMC-50, 100 ◆
143TC/145TC	DMC-180
182TC/184TC	DMC-210
213TC/215TC	DMC-256

- ◆ DMC 100 module has rating of 180 module with 56C (5/8") shafts

#### Selection Procedure

- (1) Determine the frame size, horsepower and speed at the module location (motor speed for DMC Series).
- (2) Choose proper module size based on motor frame size for DMC Series or motor HP and operating speed for DMS Series.
- (3) Check to ensure the max allowable cycles per minute rating is not exceeded by consulting charts in the engineering/technical section. Consult DODGE Engineering when allowable cycle rate is exceeded.

#### DMS Series Selection

HP	Shaft Speed at Module (RPM)																		
	100	200	300	400	500	600	700	800	900	1000	1100	1200	1500	1800	2000	2400	3000	3600	
1/4	210	180	180	180	50	50	50	50	50	50	50	50	50	50	50	50	50	50	50
1/2	210	210	180	180	180	180	180	180	50	50	50	50	50	50	50	50	50	50	50
3/4		210	210	210	180	180	180	180	180	180	180	50	50	50	50	50	50	50	50
1		210	210	210	210	210	180	180	180	180	180	180	180	50	50	50	50	50	50
1-1/2			210	210	210	210	210	210	210	210	180	180	180	180	180	180	180	180	180
2				210	210	210	210	210	210	210	210	210	210	180	180	180	180	180	180
3					210	210	210	210	210	210	210	210	210	210	210	210	210	180	180
5									256	256	256	210	210	210	210	210	210	210	210
7-1/2													256	210	210	210	210	210	210
10														256	256	256	256	256	256
15																		256	256

NOTE: 256 modules may be selected as an alternate to the 210 size. Check shaft diameter for proper drive components

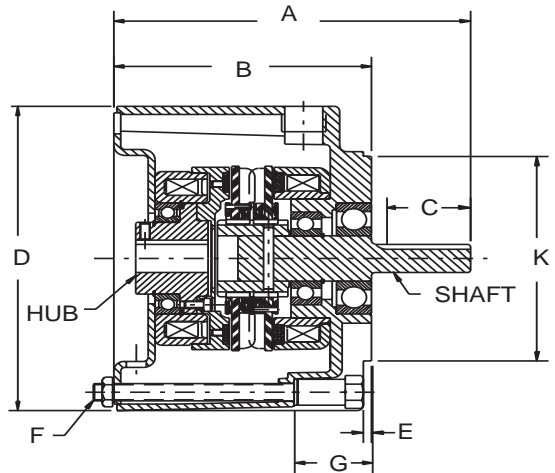


**Clutch/Brake Modules**



**DMCCB & DMCCO**

DMCCB modules are ideal for rapid cycling applications. They can be mounted directly between a C-face motor and reducer. Five standard sizes are available in 90, 24 or 6 VDC input voltage. The brake is power on. The DMCCO mounts and operates in a manner similar to DMCCB, but as a clutch only. The clutch ratings and external dimensions of both units are the same and are completely factory preassembled, adjusted, burnished and dynamically tested.



**Clutch/Brake Module  
(Clutch Only-Same Dimensions)**

PART NUMBERS		Static Torque (Lb. - Ft.)	Coil Voltage		
			90 VDC	24 VDC	6 VDC
C-Face Clutch & Brake	DMCCB-50	22	028765	028763	028761
	DMCCB-100	34	028770	028768	028766
	DMCCB-180	34	028775	028773	028771
	DMCCB-210	100	028780	028778	028776
	DMCCB-256	100	028785	028783	028781
C-Face Clutch Only	DMCCO-50	22	028855	028853	028851
	DMCCO-100	34	028860	028858	028856
	DMCCO-180	34	028865	028863	028861
	DMCCO-210	100	028870	028868	028866
	DMCCO-256	100	028875	028873	028871

Size	Static Torque (Lb.-Ft.)	C-Face Frame	Input Hub Dia	Output Shaft Dia	Keyway	A Max	B	C	D Max	E Max	F	G*	K
50	22	56C	5/8	5/8	3/16 x 3/32	6.75	4.84	1.59	6.75	.16	4 Equally Spaced 3/8-16 UNC on 5.875" Dia. B.C.	1.30	4.50
100	34	56C	5/8	5/8	3/16 x 3/32	6.75	4.84	1.59	6.75	.16		1.30	4.50
180	34	143TC and 145TC	7/8	7/8	3/16 x 3/32	6.75	4.84	1.59	6.75	.16	4 Equally Spaced 1/2-13 UNC on 7.25" Dia. B.C.	1.30	4.50
210	100	182TC and 184TC	1-1/8	1-1/8	1/4 x 1/8	8.83	6.20	2.00	9.05	.27		1.57	8.50
256	100	213TC and 215TC	1-3/8	1-3/8	5/16 x 5/32	9.32	6.20	2.50	9.05	.27	1.57	8.50	

\* G Dimension = Electrical Connection

FEATURES/BENEFITS PAGE PT2-12	SPECIFICATION/HOW TO ORDER PAGE PT2-13	MODIFICATION PAGE PT2-37	ENGINEERING/TECHNICAL PAGE PT2-39
----------------------------------	---	-----------------------------	--------------------------------------



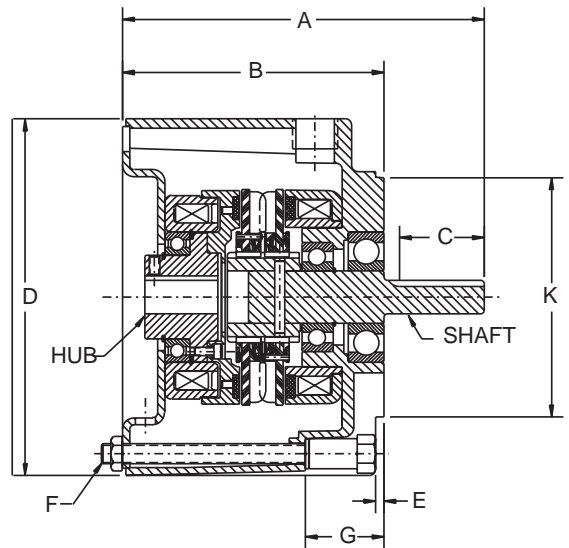
# SELECTION/DIMENSIONS



## Clutch/Brake Modules



**DMCCB-PSM**  
Power Supply Mounted †  
Clutch Brake Motor



Part Number		Static Torque (Lb-Ft)	Coil Voltage
			90 VDC
C-Face	DMCCB-50-PSM	22	028977
Clutch &	DMCCB-180-PSM	34	028979
Brake	DMCCB-210-PSM	100	028981

Size	Static Torque (Lb.-Ft.)	C-Face Frame	Input Hub Dia	Output Shaft Dia	Keyway	A Max	B	C	D Max	E Max	F	G*	K
50	22	56C	5/8	5/8	3/16 x 3/32	6.75	4.84	1.59	6.75	.16	4 Equally Spaced 3/8-16 UNC on 5.875" Dia. B.C.	1.30	4.50
180	34	143TC and 145TC	7/8	7/8	3/16 x 3/32	6.75	4.84	1.59	6.75	.16		1.30	4.50
210	100	182TC and 184TC	1-1/8	1-1/8	1/4 x 1/8	8.83	6.20	2.00	9.05	.27	4 Equally Spaced 1/2-13 UNC on 7.25" Dia. B.C.	1.570	8.50

\* G Dimension = Electrical Connection

† NOTE: Unit includes two model 50 power supplies (120 VAC input) part number 032408

FEATURES/BENEFITS PAGE PT2-12	SPECIFICATION/HOW TO ORDER PAGE PT2-13	MODIFICATION PAGE PT2-37	ENGINEERING/TECHNICAL PAGE PT2-39
----------------------------------	---	-----------------------------	--------------------------------------



## Clutch/Brake Modules

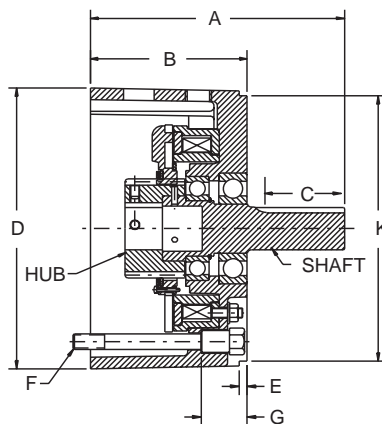


**DMCBO**



**DMCBX**

The DMCBO mounts and operates in a manner similar to DMCCB, but as a power-on brake only. Brake ratings are the same as the DMCCB. Dimensionally, the DMCBO is shorter axially from C-face to output shaft. The DMCBX power-on brake is designed to be mounted on a double shafted C-face motor. It is shorter axially than comparable power-off brakes and provides the advantages of C-face mounting in space restricted applications. Sizes and ratings are the same as the DMCBO brakes.



**Brake Only Module  
(Style without Shaft Not Shown)**

Part Numbers		Static Torque (Lb.-Ft.)	Coil Voltage		
			90 VDC	24 VDC	6 VDC
C-Face Brake Only	DMCBO-50	22	028120	028123	028121
	DMCBO-100	34	028920	028923	028921
	DMCBO-180	34	028220	028223	028221
	DMCBO-210	100	028320	028323	028321
	DMCBO-256	100	028820	028823	028821
C-Face Brake Only (No Shaft)	DMCBX-50	22	028125	028128	028126
	DMCBX-180	34	028225	028228	028226
	DMCBX-210	100	028325	028328	028326
	DMCBX-256	100	028825	028828	028826

Size	Static Torque (Lb.-Ft.)	C-Face Frame Size	Hub Dia.	Output Shaft Dia.	Keyway	A Max	B	C	D Max	E Max	F	G*	K
DMCBO-50	22	56C	5/8	5/8	3/16x3/32	5.18	3.28	1.59	6.75	.16	4 Equally Spaced 3/8-16 UNC on 5.875" Dia. B.C.	1.30	4.50
DMCBX-50	22	56C	5/8	-	3/16x3/32	3.30	3.28	-	6.75	.16		1.30	4.50
DMCBO-100	34	56C	5/8	5/8	3/16x3/32	5.18	3.28	1.59	6.75	.16	4 Equally Spaced 3/8-16 UNC on 5.875" Dia. B.C.	1.30	4.50
DMCBO-180	34	143TC and 145TC	7/8	7/8	3/16x3/32	5.18	3.28	1.59	6.75	.16		1.30	4.50
DMCBX-180		-		3.30		-							
DMCBO-210	100	182TC and 184TC	1-1/8	1-1/8	1/4X1/8	7.65	5.02	2.00	9.00	.27	4 Equally Spaced 1/2-13 UNC on 7.25" Dia. B. C.	1.57	8.50
DMCBX-210				-		5.17		-					
DMCBO-256	100	213TC and 215TC	1-3/8	1-3/8	3/16x5/32	8.04	5.02	2.50	9.00	.27	1.57	8.50	
DMCBX-256				-		4.92		-					

\* G Dimension = Electrical Connection

FEATURES/BENEFITS PAGE PT2-12	SPECIFICATION/HOW TO ORDER PAGE PT2-13	MODIFICATION PAGE PT2-37	ENGINEERING/TECHNICAL PAGE PT2-39
----------------------------------	---	-----------------------------	--------------------------------------



# SELECTION/DIMENSIONS

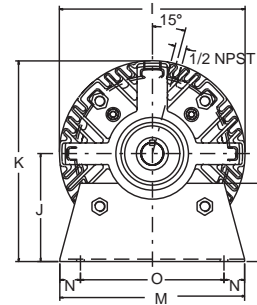
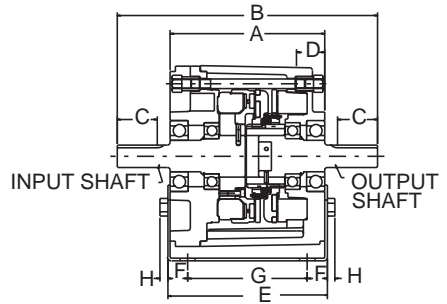


## Clutch/Brake Modules



### DMSCB & DMSCO

The DMSCB clutch/brake module is rated identically to the C-face version, but is mounted on a base with standard shaft input and output. It can be direct coupled or linked by belt drive to motor and driven equipment. The DMSCO mounts and operates in a manner similar to the DMSCB, but as a clutch only. Clutch ratings and dimensions of both units are identical.



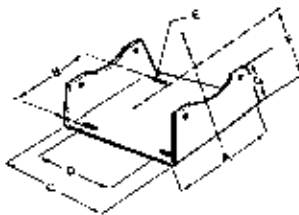
Part Numbers		Static Torque (Lb.-Ft.)	Coil Voltage		
			90 VDC	24 VDC	6 VDC
Base Mount	DMSCB-50	22	028130	028133	028131
Clutch & Brake	DMSCB-180	34	028230	028233	028231
	DMSCB-210	100	028330	028333	028331
Base Mount	DMSCO-50	22	028140	028143	028141
Clutch Only	DMSCO-180	34	028240	028243	028241
	DMSCO-210	100	028340	028343	028341

Size	Static Torque (Lb.-Ft.)	Shaft Dia.	Keyway	A	B	C Min	D*	E	F	G	H	I Max	J	K	L	M	N	O
50	22	5/8	3/16 x 3/32	5.72	9.49	1.59	1.30	5.70	0.85	4	0.34	6.75	3.50	6.87	2.00	6	0.50	5.00
180	34	7/8			9.49	1.59							4.50	7.87	3.00			
210	100	1-1/8	1/4 x 1/8	7.71	12.97	2.00	1.57	8.20	1.09	6	0.44	9.05	5.25	9.78	3.37	9	0.62	7.75

\* D Dimension - Electrical connection

### DMS Series Module Bases

Style	Size	Base Part Number
Module Base	DM-50-B	028180
	DM-180-B	028280
	DM-210-B	028380



Size	A	B	C	D Nom	E (Slot)	F	G
DM-50-B	6.00	5.00	5.70	4.00	.75 x.40	3.50	2.00
DM-180-B	6.00	5.00	5.70	4.00	.75 x.40	4.50	3.00
DM-210-B	9.00	7.75	8.20	6.00	.75 x.53	5.25	3.80

\*\* Module base sold separately