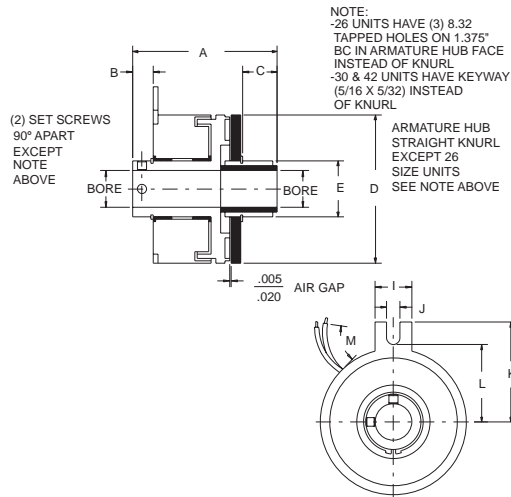




SL Series

The Shaft Mounted SL SERIES clutches are engineered for easy installation. Nine sizes are available for shaft diameters from 3/16" to 3/4". The SL Armature Hub will accept sheaves, sprockets, gears or other typical power transmission drive components. SL Clutches are plated for protection from the environment. The SL units have a zero backlash armature hub assembly.



BSL Series Dimensions

SIZE	PART NO.	VOLTS DC	BORE IN. ★	ROTOR KEYWAY	STATIC TORQUE (LB.-IN.)	A MAX	B NOM	C MAX	D MAX	E ±.002	I MAX	J MIN	K NOM	L NOM	M ±.500
SL-08	024000	90	3/16	set screws	2.5	1.370	.191	.410	.903	.507	.305	.094	0.625	.445	12.00
	024001		1/4												
	024002	24	3/16												
SL-11	024100	90	1/4	set screws	6	1.409	.147	.396	1.160	.506	.380	.122	0.875	.585	12.00
	024101		5/16												
	024102	24	1/4												
SL-15	024200	90	5/16	set screws	10	1.695	.275	.303	1.500	.630	.520	.180	1.120	.750	12.00
	024201		3/8												
	024202	24	5/16												
SL-17SL-17	024300	90	5/16	set screws	15	1.823	.279	.380	1.780	.630	.505	.184	1.325	.975	12.00
	024301		3/8												
	024302	24	5/16												
SL-19	024400	90	3/8	3/32x3/64 set screws	25	1.948	.279	.465	2.000	.756	.505	.184	1.325	.975	12.00
	024401		1/2												
	024402	24	3/8												
SL-22	024500	90	3/8	3/32x3/64 set screws	50	2.160	.281	.432	2.260	.756	.442	.170	1.515	1.160	18.00
	024501		1/2												
	024502	24	3/8												
SL-26	024600	90	1/2	1/8x1/16	80	2.464	.277	.472	2.645	.999	.510	.190	1.750	1.465	18.00
	024602		24												
	024700	90	1/2												
SL-30	024701	90	5/8	1/8x1/16	125	2.800	.250	.830	3.268	1.374	.442	.170	2.050	1.695	terminals
	024702		24												
	024703	5/8	3/16x3/32												
SL-42	024800	90	1/2	1/8x1/16	250	3.820	.320	1.560	4.270	1.374	.645	.190	2.500	2.312	terminals
	024801		5/8												
	024802	3/4													
	024803	24	1/2												
	024804	5/8	3/16x3/32												
024805	3/4	3/16x3/32													

★ Consult DODGE for other bore sizes

FEATURES/BENEFITS PAGE PT2-25	SPECIFICATION/HOW TO ORDER PAGE PT2-26	MODIFICATION PAGE PT2-37	ENGINEERING/TECHNICAL PAGE PT2-39
----------------------------------	-------------------------------------------	-----------------------------	--------------------------------------

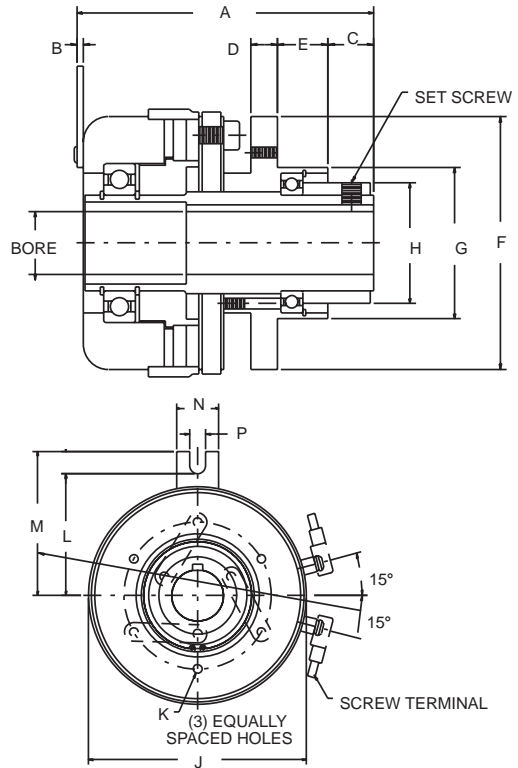


SELECTION/DIMENSIONS



BSL Series

The Shaft Mounted BSL SERIES clutches are engineered for easy installation. Two sizes are available for shaft diameters from 1/2" to 1". The BSL Armature Hub will accept sheaves, sprockets, gears or other typical power transmission drive components. BSL Clutches are plated for protection from the environment. The BSL units have a zero backlash armature hub assembly.



BSL Series Dimensions

SIZE	PART NO.	VOLTS	H BORE	ROTOR KEYWAY	SET SCREW	STATIC TORQUE (LB-IN.)	A MAX	B NOM	C MAX	D MAX	E ±.005	F MAX	G PILOT DIA.	H MAX	J MAX	K	L MAX	M ±.015	N MAX	P MIN.
BSL-26	024900	90	1/2	1/8x1/16	#10-32	80	2.93	.06	.45	.265	.50	2.505	1.499 1.497	1.195	2.65	(3) 6-32 on 1.790 B.C.	1.482	1.750	.510	.190
	024901	90	5/8	3/16x3/32																
	024902	24	1/2	1/8x1/16																
	024903	24	5/8	3/16x3/32																
BSL-42	025100	90	7/8	3/16x3/32	1/4-28	250	3.35	.06	.41	.282	.673	4.015	3.000 2.998	1.82	4.27	(3) 1/4-20 on 3.500 B.C.	2.223	2.500	.545	.190
	025101	90	1	1/4x1/8																
	025102	24	7/8	3/16x3/32																
	025103	24	1	1/4x1/8																

★ Consult DODGE for other bore sizes

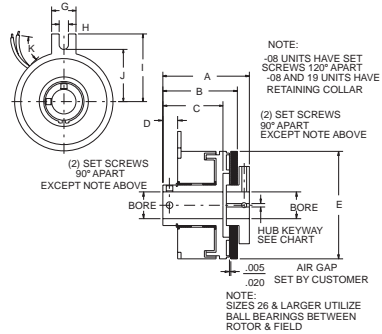
FEATURES/BENEFITS PAGE PT2-25	SPECIFICATION/HOW TO ORDER PAGE PT2-26	MODIFICATION PAGE PT2-37	ENGINEERING/TECHNICAL PAGE PT2-39
----------------------------------	-------------------------------------------	-----------------------------	--------------------------------------



SO Series

The Shaft Mounted SO SERIES Clutches are engineered for easy installation. Nine sizes are available for shaft diameters from 3/16" to 1". SO Clutches are plated for protection from the environment and have a zero backlash armature hub assembly.

SO Series Dimensions



SIZE	PART NO.	VOLTS DC	BORE IN. ★	ROTOR KEYWAY	STATIC TORQUE (LB.-IN.)	A MAX	B MAX	C MAX	D MAX	E MAX	G MAX	H MIN	I NOM	J NOM	K ±.500
SO-08	029000	90	3/16	set screws	2.5	1.059	.875	.763	.200	.903	.305	.094	.625	.445	12.0
	029001		1/4												
	029002	24	3/16												
SO-11	029003	90	1/4	set screws	6	1.168	.933	.777	.164	1.160	.380	.122	.875	.585	12.0
	029004		5/16												
	029005	24	1/4												
SO-15	029006	90	5/16	set screws	10	1.575	1.255	1.075	.295	1.500	.520	.180	1.120	.750	12.0
	029007		3/8												
	029008	24	5/16												
SO-17	029009	90	3/8	set screws	15	1.605	1.311	1.060	.301	1.780	.505	.184	1.325	.975	12.0
	029010		5/16												
	029011	24	3/8												
SO-19	029012	90	5/16	1/16x1/32	25	1.609	1.314	1.060	.301	2.000	.505	.184	1.325	.975	12.0
	029013		3/8	3/32x3/64											
	029014	24	5/16	1/16x1/32											
SO-22	029015	90	3/8	3/32x3/64	50	1.989	1.578	1.273	.316	2.260	.442	.170	1.515	1.160	18.0
	029016		1/2	1/8x1/16											
	029017	24	3/8	3/32x3/64											
SO-26	029018	90	1/2	1/8x1/16	80	2.115	1.754	1.444	.302	2.645	.510	.190	1.750	1.465	18.0
	029019		3/8	3/32x3/64											
	029020	24	1/2	1/8x1/16											
SO-30	029021	90	5/8	3/16x3/32	125	2.130	1.795	1.390	.270	3.268	.442	.170	2.050	1.695	screw terminals
	029022		1/2	1/8x1/16											
	029023	24	3/8	3/32x3/64											
SO-42	029024	90	1/2	1/8x1/16	250	2.570	2.050	1.625	.340	4.270	.645	.190	2.500	2.312	screw terminals
	029025		5/8	3/16x3/32											
	029026	24	1/2	1/8x1/16											
SO-42	029027	90	5/8	3/16x3/32	250	2.570	2.050	1.625	.340	4.270	.645	.190	2.500	2.312	screw terminals
	029028		1/2	1/8x1/16											
	029029	24	5/8	3/16x3/32											
SO-42	029030	90	7/8	3/16x3/32	250	2.570	2.050	1.625	.340	4.270	.645	.190	2.500	2.312	screw terminals
	029031		1	1/4x1/8											
	029032	24	5/8	3/16x3/32											
SO-42	029033	90	1/2	1/8x1/16	250	2.570	2.050	1.625	.340	4.270	.645	.190	2.500	2.312	screw terminals
	029034		5/8	3/16x3/32											
	029035	24	3/4	3/16x3/32											
SO-42	029036	90	7/8	3/16x3/32	250	2.570	2.050	1.625	.340	4.270	.645	.190	2.500	2.312	screw terminals
	029037		1	1/4x1/8											
	029038	24	5/8	3/16x3/32											
SO-42	029039	90	1/2	1/8x1/16	250	2.570	2.050	1.625	.340	4.270	.645	.190	2.500	2.312	screw terminals
	029040		5/8	3/16x3/32											
	029041	24	3/4	3/16x3/32											
SO-42	029042	90	7/8	3/16x3/32	250	2.570	2.050	1.625	.340	4.270	.645	.190	2.500	2.312	screw terminals
	029043		1	1/4x1/8											

● Other voltages available on request

★ Consult DODGE for other bore sizes

FEATURES/BENEFITS PAGE PT2-25	SPECIFICATION/HOW TO ORDER PAGE PT2-26	MODIFICATION PAGE PT2-37	ENGINEERING/TECHNICAL PAGE PT2-39
----------------------------------	-------------------------------------------	-----------------------------	--------------------------------------

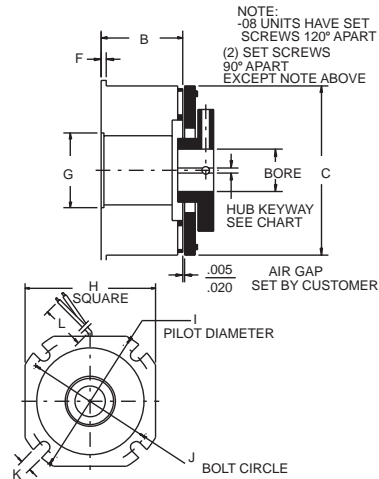


SELECTION/DIMENSIONS



FB Series

The FB Flange Mounted Electric Brakes are designed for easy installation. These power on brakes engage when voltage is applied and release when the voltage is turned off. FB Brakes are available in nine sizes in shaft diameters from 3/16" to 1". These brakes can be used to accurately and repetitively decelerate inertial loads or to control web tension. (Contact application engineering for application assistance.) They incorporate zero backlash style armature assembly.



FB Series Dimensions

SIZE	PART No.	VOLTS DC	BORE IN. ★	NOMINAL KEYWAY	STATIC TORQUE (LB.-IN.)	A MAX	B NOM	C MAX	F MAX	G ±.001	H MAX	I ±.001	J NOM	K MIN	L ±.500
FB-08	025200	90	3/16	set screws	2.5	.885	.634	.905	.034	N.A.	.980	1.1995	1.030	.094	12.00
	025201		1/4												
	025202	24	3/16												
	025203		1/4												
FB-11	025300	90	1/4	set screws	6	.974	.650	1.160	.052	N.A.	1.230	1.498	1.312	.123	12.00
	025301		5/16												
	025302	24	1/4												
	025303		5/16												
FB-15	025400	90	5/16	set screws	10	1.304	.867	1.500	.063	N.A.	1.567	1.999	1.750	.156	12.00
	025401		3/8												
	025402	24	5/16												
	025403		3/8												
FB-17	025500	90	5/16	1/16x1/32 3/32x3/64	15	1.269	.848	1.780	.064	0.751	1.943	2.436	2.125	.186	12.00
	025501		3/8												
	025502	24	5/16												
	025503		3/8												
FB-19	025600	90	3/8	3/32x3/64 1/8x1/16	25	1.33	.901	2.00	.062	0.751	1.943	2.436	2.125	0.186	12.00
	025601		1/2												
	025602	24	3/8												
	025603		1/2												
FB-22	025700	90	3/8	3/32x3/64 1/8x1/16	50	1.757	1.173	2.260	.096	1.001	2.322	2.873	2.500	0.160	18.00
	025701		1/2												
	025702	24	3/8												
	025703		1/2												
FB-26	025800	90	1/2	1/8x1/16 3/16x3/32	80	1.815	1.300	2.645	.064	1.062	2.630	3.499	3.125	0.182	18.00
	025801		5/8												
	025802	24	1/2x5/8												
	025803		3/16x3/32												
FB-30	025900	90	5/8	3/16x3/32	125	1.9	1.310	3.268	.097	1.751	3.200	4.186	3.750	0.182	terminals
	025901		3/4												
	025902	24	5/8												
	025903		3/4												
FB-42	026000	90	5/8	3/16x3/32 3/16x3/32 3/16x3/32	250	2.28	1.490	4.270	.097	1.875	4.255	5.624	5.000	0.276	terminals
	026001		3/4												
	026004		7/8												
	026005		1												
	026002	24	5/8	3/16x3/32 3/16x3/32 3/16x3/32											
	026003		3/4												
	026006		7/8												
	026007		1												

★ Consult DODGE for other bore sizes

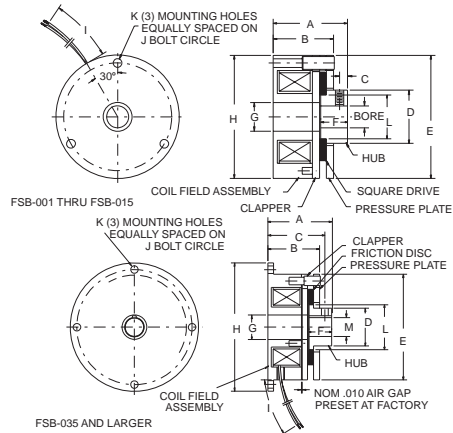
FEATURES/BENEFITS PAGE PT2-25	SPECIFICATION/HOW TO ORDER PAGE PT2-26	MODIFICATION PAGE PT2-37	ENGINEERING/TECHNICAL PAGE PT2-39
----------------------------------	-------------------------------------------	-----------------------------	--------------------------------------



FSB Series

FSB SERIES Power Off Brakes are designed to decelerate or park inertial loads when the voltage is turned off, either intentionally or accidentally (as in the case of a power failure). These units can be bulkhead or motor mounted and are available in seven torque ranges and shaft sizes 3/16" to 3/4". These units employ unique friction material for long life and quiet operation.

FSB Series Dimensions



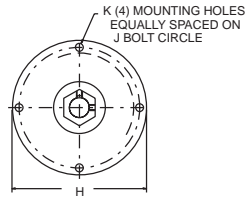
SIZE	PART NO.	VOLTS	BORE IN. ★	NOMINAL KEYWAY	STATIC TORQUE (LB.-IN.)	A MAX	B NOM	C NOM	D MAX	E MAX	F MIN	G NOM	H MAX	I ±.500	J NOM	K MIN
FSB-001	026100	90 DC	3/16		1	0.890	.710	.072	.510	1.485	.320	.280	1.375	12.0	1.180	.124
	026101	90 DC	1/4													
	026102	24 DC	3/16	set screws												
	026103	24 DC	1/4													
	026104	120 AC	3/16													
026105	120 AC	1/4														
FSB-003	026200	90 DC	1/4		3	1.060	.870	.115	0.755	1.910	.380	.410	1.752	12.0	1.545	.124
	026201	90 DC	5/16													
	026202	24 DC	1/4	set screws												
	026203	24 DC	5/16													
	026204	120 AC	1/4													
026205	120 AC	5/16														
FSB-007	026300	90 DC	5/16	1/16x1/32	7	1.400	1.200	1.255	0.722	2.465	.605	.781	2.436	12.0	2.125	.172
	026301	90 DC	3/8	3/32x3/64												
	026302	24 DC	5/16	1/16x1/32												
	026303	24 DC	3/8	3/32x3/64												
	026304	120 AC	5/16	1/16x1/32												
026305	120 AC	3/8	3/32x3/64													
FSB-015	026400	90 DC	5/16	1/16x1/32	15	1.400	1.200	1.255	0.722	2.465	.605	.781	2.436	12.0	2.125	0.172
	026401	90 DC	3/8	3/32x3/64												
	026402	24 DC	5/16	1/16x1/32												
	026403	24 DC	3/8	3/32x3/64												
	026404	120 AC	5/16	1/16x1/32												
026405	120 AC	3/8	3/32x3/64													
FSB-035	026500	90 DC	1/2	1/8x1/16	35	2.090	1.920	1.960	1.000	3.010	.580	.891	3.500	18.0	3.125	0.200
	026501	24 DC	5/8	3/16x3/32												
	026502	24 DC	1/2	1/8x1/16												
	026503	24 DC	5/8	3/16x3/32												
	026504	120 AC	1/2	1/8x1/16												
026505	120 AC	5/8	3/16x3/32													
FSB-050	026600	90 DC	1/2	1/8x1/16	50	2.090	1.920	1.960	1.000	3.010	.580	.891	3.500	18.0	3.125	0.200
	026601	90 DC	5/8	3/16x3/32												
	026602	24 DC	1/2	1/8x1/16												
	026603	24 DC	5/8	3/16x3/32												
	026604	120 AC	1/2	1/8x1/16												
026605	120 AC	5/8	3/16x3/32													
FSB-100	026800	90 DC	5/8		100	2.320	2.080	2.100	.975	4.000	.555	1.188	5.250	18.0	4.750	0.216
	026801	90 DC	3/4													
	026802	24 DC	5/8	3/16x3/32												
	026803	24 DC	3/4													
	026804	120 AC	5/8													
026805	120 AC	3/4														

★ Consult DODGE for other bore sizes

FEATURES/BENEFITS PAGE PT2-25	SPECIFICATION/HOW TO ORDER PAGE PT2-26	MODIFICATION PAGE PT2-37	ENGINEERING/TECHNICAL PAGE PT2-39
----------------------------------	-------------------------------------------	-----------------------------	--------------------------------------

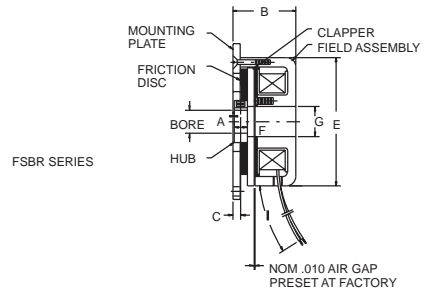


SELECTION/DIMENSIONS



FSBR Series

FSBR SERIES Power Off Brakes are designed for applications requiring minimum space or on motors with short shaft extensions. When mounted, the armature hub on these units is not exposed like the FSB series. These units are available in five torque ranges and shaft sizes from 5/16" thru 3/4". Unique friction material is employed for long wear life and quiet operation.



SIZE	PART NO.	VOLTS	BORE IN. ★	NOMINAL KEYWAY	STATIC TORQUE (LB.-IN.)	A ● MAX	B NOM	C NOM	E MAX	F MIN	G NOM	H MAX	I .500	J NOM	K MIN
FSBR-007	26900	90 DC	5/16	1/16x1/32	7	.062	.960	.115	2.260	.605	.781	3.235	12.0	2.844	.172
	26901	90 DC	3/8	3/32x3/64											
	26902	24 DC	5/16	1/16x1/32											
	26903	24 DC	3/8	3/32x3/64											
	26904	120 AC	5/16	1/16x1/32											
26905	120 AC	3/8	3/32x3/64												
FSBR-015	27000	90 DC	5/16	1/16x1/32	15	.062	1.200	.115	2.400	.605	.945	3.235	12.0	2.844	.172
	27001	90 DC	3/8	3/32x3/64											
	27002	24 DC	5/16	1/16x1/32											
	27003	24 DC	3/8	3/32x3/64											
	27004	120 AC	5/16	1/16x1/32											
	27005	120 AC	3/8	3/16x3/32											
FSBR-035	27100	90 DC	1/2	1/8x1/16	35	.094	1.905	.239	2.810	.280	.891	3.500	18.0	3.125	.200
	27101	90 DC	5/8	3/16x3/32											
	27102	24 DC	1/2	1/8x1/16											
	27103	24 DC	5/8	3/16x3/32											
	27104	120 AC	1/2	1/8x1/16											
	27105	120 AC	5/8	3/16x3/32											
FSBR-050	27200	90 DC	1/2	1/8x1/16	50	.094	1.905	.239	2.810	.280	.891	3.500	18.0	3.125	.200
	27201	90 DC	5/8	3/16x3/32											
	27202	24 DC	1/2	1/8x1/16											
	27203	24 DC	5/8	3/16x3/32											
	27204	120 AC	1/2	1/8x1/16											
	27205	120 AC	5/8	3/16x3/32											
FSBR-100	27400	90 DC	5/8	3/16x3/32	100	.140	1.870	.610	4.000	.575	1.188	5.250	18.0	4.750	.216
	27401	90 DC	3/4												
	27402	24 DC	5/8												
	27403	24 DC	3/4												
	27404	120 AC	5/8												
	27405	120 AC	3/4												

● Required distance between Hub & Mounting surface

★ Consult DODGE for other bore sizes

FEATURES/BENEFITS
PAGE PT2-25

SPECIFICATION/HOW TO ORDER
PAGE PT2-26

MODIFICATION
PAGE PT2-37

ENGINEERING/TECHNICAL
PAGE PT2-39