



## Shaft Mounted Clutches & Brakes

### SELECTION PROCEDURE

1. Determine the horsepower and the speed at the clutch or brake.
2. Choose proper size based on motor HP and operating speed.
3. Check to ensure the maximum allowable cycles per minute rating is not exceeded by consulting the charts in the Engineering/Technical section.

### IEC Series/RPM

HP	100	200	300	400	500	600	700	800	900	1000	1100	1200	1500	1800	2000	2400	3000	3600	4000	4500	5000	
1/50																						
1/20																						
1/12									IEC-375													
1/8																						
1/6																						
1/4																						
1/2																						
3/4									IEC-475													
1																						
1-1/2																						
2									IEC-650													
3																						
5									IEC-825													
7-1/2																						

### IEB and IPB\* Series/RPM

HP	100	200	300	400	500	600	700	800	900	1000	1100	1200	1500	1800	2000	2400	3000	3600	4000	4500	5000	
1/12																						
1/8																						
1/6																						
1/4									IEB-375/IPB-375													
1/3																						
1/2																						
3/4																						
1																						
1-1/2									IEB-475/IPB-475													
2																						
3									IEB-650/IPB-650													
5																						
7-1/2									IEB-825*													
10																						
15																						
20																						
25																						
30																						
40																						

\* IPB selection through size 650



# SELECTION/DIMENSIONS

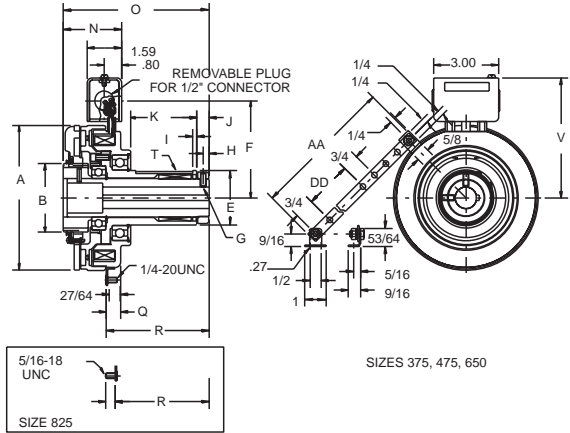


## Shaft Mounted Clutches & Brakes



### IEC SERIES

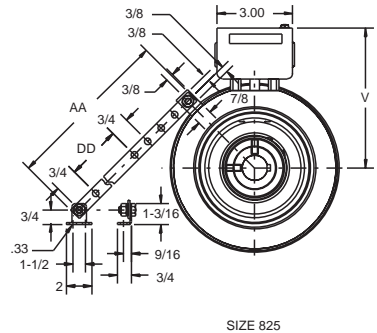
IEC Series Shaft Mounted Clutches are factory assembled, tested, preburnished and ready to mount on standard motor shafts. Sheaves, sprockets, gears or other power transmission components can be mounted directly on the clutch hub extension with standard DODGE TAPER-LOCK® bushings.



SIZES 375, 475, 650

### Part Numbers

Unit Size	Voltage	Bore Size							
		1/2"	5/8"	3/4"	7/8"	1	1-1/8"	1-1/4"	1-3/8"
IEC-375	90 VDC	027500	027501						
	24 VDC	027506	027507						
	6 VDC	027502	027503						
IEC-475	90 VDC		027601	027601	027602				
	24 VDC		027609	027610	027611				
	6 VDC		027603	027604	027605				
IEC-650	90 VDC					027700	027701	027702	027703
	24 VDC					027712	027713	027714	027715
	6 VDC					027704	027705	027706	027707
IEC-825	90 VDC					027806	027800	027801	027802
	24 VDC					027812	027813	027814	027815
	6 VDC					027807	027803	027804	027805



SIZE 825

### IEC Series Dimensions

Size	Bore ±.001	Keyway	Static Torque Lb-Ft	A Max	B Max	E Dia	F	G Set-Screw	H	I	J	K	N Max	O Max	Q	R	T Keyway	V Max	W	AA	DD
IEC-375	1/2	1/8 x 1/16	22	4.08	1.70	1.375	3.20	#10-24	.18	.22	.35	2.10	2	4.65	.60	3	5/16x3/16*	4.23	2.44	5	1.50
	5/8	3/16 x 1/16*				1.3735															
IEC-475	5/8	3/16 x 3/32	34	5.17	2.20	1.625	3.78	1/4-20	.28	.20	.58	2.39	2.10	5.30	.60	3.53	3/8x1/16*	4.98	2.98	5	1.50
	3/4	3/16 x 3/32				1.6235															
	7/8	3/16 x 3/32*																			
IEC-650	1	1/4 x 1/8	100	6.68	3.17	2.500	4.47	1/4-20	.27	.19	.56	3.08	2.69	6.72	.52	4.61	5/8x3/32*	5.66	3.73	10◆	6.50
	1-1/8	1/4 x 1/8				2.4985															
	1-1/4	1/4 x 1/8																			
	1-3/8	5/6 x 3/32*																			
IEC-825	1	1/4 x 1/8	175	8.43	3.17	2.500	5.35	1/4-20	.27	.19	.56	3.08	2.81	7.01	-	4.19	5/8x3/32*	6.54	5.06	17◆	2.88
	1-1/8	1/4 x 1/8				2.4985															
	1-1/4	1/4 x 1/8																			
1-3/8	5/16x3/32*																				

◆ Tab location on IEC-650 45° counterclockwise from top; tab location on IC-825 45° clockwise from top

\* Non-standard keyway - keys furnished with clutch

FEATURES/BENEFITS  
PAGE PT2-19

SPECIFICATION/HOW TO ORDER  
PAGE PT2-20

MODIFICATION  
PAGE PT2-37

ENGINEERING/TECHNICAL  
PAGE PT2-39

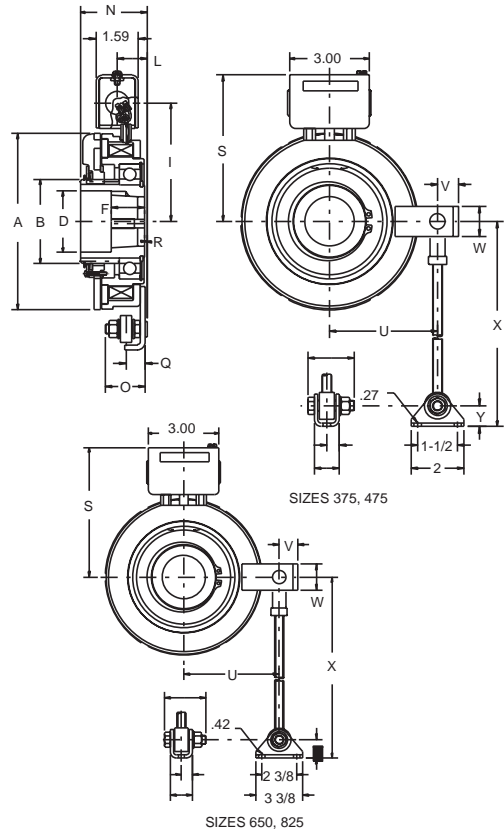


## Shaft Mounted Clutches & Brakes



### IEB SERIES

IEB Series Shaft Mounted Power-On Brakes offer a wide selection of bore sizes with the use of the DODGE TAPER-LOCK bushings. The anti-rotation torque arm can be mounted in any location around the shaft for further application flexibility. Ten motor adaptors are also available for mounting single shaft extension motors.



### Part Numbers

Unit Size	Voltage	Bore Size		
		1/2"	5/8"	TAPER-LOCK
IEB-375	90 VDC	027550	027551	
IEB-375	24 VDC	027556	027557	
IEB-375	6 VDC	027552	027553	
IEB-475	90 VDC			027650 TAPER-LOCK
IEB-475	24 VDC			027653 #1008
IEB-475	6 VDC			027651 1" Max.
IEB-650	90 VDC			027750 TAPER-LOCK
IEB-650	24 VDC			027753 #1310
IEB-650	6 VDC			027751 1-7/16" Max.
IEB-825	90 VDC			027850 TAPER-LOCK
IEB-825	24 VDC			#1615
IEB-825	6 VDC			027851 1-11/16" Max.

\* TL Bushing sold separately

Size	Bore	Keyway	Static Torque Lb.-Ft.	A Max.	B	D	F	I	L	N Max.	O	Q	R Max.	S	U	V	W	X Max.	Y
IEB-375	1/2 5/8	1/8 x 1/16 3/16 x 3/32	22	4.08	1.70	.98	1.66	3.34	.90	2.25	1.00	.33	.15	4.45	2.52	.66	1.00	8	.69
IEB-475		TAPER-LOCK Bushing #1008 1" Max.	34	5.17	2.20	1.45	1.00	3.88	.75	1.88	1.00	.33	.15	4.98	3.05	.78	1.00	10	.69
IEB-650		TAPER-LOCK Bushing #1310 1-7/16" Max.	100	6.65	3.17	2.30	1.27	4.55	1.13	2.51	1.31	.80	.09	5.74	4.06	.78	1.13	11.78	.78
IEB-825		TAPER-LOCK Bushing #1615 1-11/16" Max.	175	8.39	3.17	2.25	1.63	5.42	1.18	2.72	1.31	.80	-	6.61	4.81	.84	1.13	11.78	.78

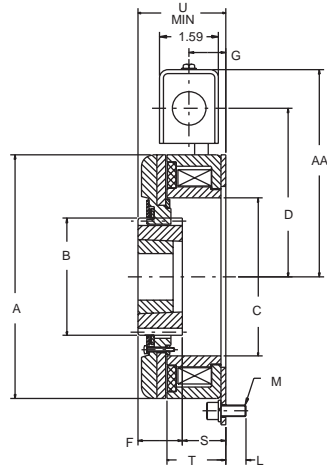
FEATURES/BENEFITS PAGE PT2-19	SPECIFICATION/HOW TO ORDER PAGE PT2-20	MODIFICATION PAGE PT2-37	ENGINEERING/TECHNICAL PAGE PT2-39
----------------------------------	---	-----------------------------	--------------------------------------



# SELECTION/DIMENSIONS



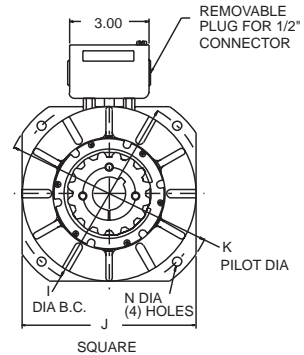
## Shaft Mounted Clutches & Brakes



### IPB SERIES

IPB Series Flange Mounted Power-On Brakes operate similar to the FB Series brake. The brake magnet/flange can be mounted to any suitable mounting surface. Armature mounts to load shaft using DODGE TAPER-LOCK bushings.

Unit Size	Voltage	Bore Size				TAPER-LOCK
		1/2"	5/8"	3/4"	7/8"	
IPB-375	90 VDC	029900	029901	029902	029903	
	24 VDC	029918	029919	029920	029921	
	6 VDC	029909	029910	029911	029912	
IPB-475	90 VDC					029904 TAPER-LOCK
	24 VDC					029922 #1008
	6 VDC					029913 1" Max.
IPB-650	90 VDC					029905 TAPER-LOCK
	24 VDC					029923 #1610
	6 VDC					029914 1-11/16" Max.



\* TL Bushing sold separately

Size	Bore	Keyway	Static Torque (Lb.-Ft.)	A Max	B	C	D	F	G	I	J Sq.	K	S	T	U Min.	M	L Max.	AA*	N	P
IPB-375	1/2	1/8x1/16	22	4.08	1.70	2.62	3.34	1.66	.78	5.00	4.25	5.625	1.04	1.15	2.36	4.45	.61	1/4-20 UNC	.280 .300	4.00
	5/8	3/16x3/32										5.623								
	3/4	3/16 x 3/32																		
IPB-475	Bushing 1008-1 1" Max.		34	5.17	2.20	3.15	3.88	1.00	.88	5.88	5.00	6.500	.97	1.31	2.23	4.98	.52	3/8-16 UNC	0.389 0.409	4.00
												6.498								
IPB-650	Bushing 1610 1-3/8" Max.		100	6.65	3.17	4.27	4.55	1.20	.99	7.25	6.50	8.000 7.998	1.17	1.59	2.37	5.74	.55	5/16-18 UNC	0.338 0.358	4.00

\* Screw not included