

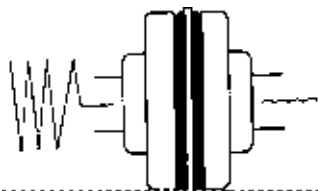


SELECTION/DIMENSIONS



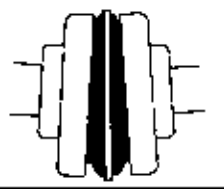
D-FLEX Couplings

FOUR-WAY FLEXING ACTION HANDLES SHOCK, VIBRATION & MISALIGNMENT



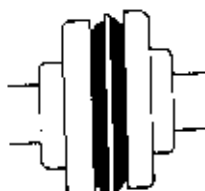
TORSIONAL

Absorbs torsional shock, dampens torsional vibrations



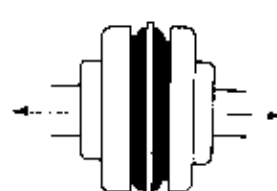
ANGULAR

Absorbs angular misalignment without wear



PARALLEL

Minimizes radial bearing loads, absorbs parallel misalignment with less wear & energy loss



AXIAL

Allows for shaft end-float

D-FLEX COUPLING SLEEVES

	EPDM RUBBER	NEOPRENE	HYTREL ⁽¹⁾
One-Piece Solid Construction	JE	JN	H
One-Piece Split Construction	JES	JNS	-
Two-Piece Construction	E	N	HS
Sizes Offered	3 - 10 JE, JES 4 - 16 E	3 - 10 JN, JNS 4 - 14 N	6 - 12 H, HS
Temperature Range	-30°F to +275°F	0°F to +200°F	-65°F to +250°F
Max Angular	1°	1°	1/4°
Max Parallel ⁽²⁾	.010" -.062"	.010" -.062"	.010" -.035"
Axial End-Float ⁽²⁾⁽³⁾	.03" -.125"	.03" -.125"	.06" -.125"
Torsional Flexibility	15° Wind Up	15° Wind Up	7° Wind Up
Application Use	General	Good Oil Resistance	Downsizing For Use Of Smaller Couplings

(1) Do not use with J or B flanges or as a replacement for other sleeves

(2) Depends on coupling size.

(3) Increase the E dimension by this amount to accommodate end float.



D-FLEX Couplings

D-FLEX COUPLING SLEEVES - PART NUMBERS

Coupling Size	EPDM			Neoprene			Hytrel	
	JE	JES	E	JN	JNS	N	H	HS
3	• 004208	• 004242		• 004209	• 004243			
4	• 004210	• 004244	• 022190	• 004211	• 004245	• 022211		
5	• 004212	• 004246	• 022191	• 004213	• 004247	• 022212		
6	• 004214	• 004248	• 022192	• 004215	• 004249	• 022213	• 022183	• 022232
7	• 004216	• 004250	• 022193	• 004217	• 004251	• 022214	• 022184	• 022233
8	• 004218	• 004252	• 022194	• 004219	• 004253	• 022215	• 022185	• 022234
9	• 004220	• 004254	• 022195			• 022216	• 022186	• 022235
10	• 004222	• 004256	• 022196			• 022217	• 022187	• 022236
11			• 022197			• 022218	022188	022237
12			• 022198			• 022219	022189	022238
13			• 021990			021993		
14			• 021991			021994		
16			• 021992					

• Stocked sleeves

D-FLEX FLANGE/SLEEVE COMPATIBILITY

Flange Style	EPDM		Neoprene		Hytrel	
	JE/JES 1 Piece	E 2 Piece	JN/JNS 1 Piece	N 2 Piece	H 1 Piece	HS 2 Piece
Type J	√	√	√	√		
Type S	√	√	√	√	√	√
Type B Bushed	√	√	√	√		
SC Spacer	√	√	√	√	√	√

D-FLEX SECTION/RATINGS DATA

Element Size	Max. Bore				Max RPM	EPDM & Neoprene		Hytrel	
	Straight Bore			Bushed		HP/1000	Rated Torque (In-Lbs)	HP/100	Rated Torque (In-Lbs)
	Type J	Type S	Type SC	Type B					
3	7/8	-	-	-	9200	0.10	60	-	-
4	1	-	-	-	7600	0.19	120	-	-
5	1-1/8	1-1/4	1-1/8	-	7600	0.38	240	-	-
6	1-3/8	1-7/8	1-3/8	1-3/16	6000	0.71	450	2.90	1,800
7	-	1-7/8	1-5/8	1-3/16	5250	1.20	725	4.60	2,875
8	-	2-3/8	1-7/8	1-5/8	4500	1.80	1,135	7.20	4,530
9	-	2-7/8	2-1/8	1-15/16	3750	2.80	1,800	11.40	7,200
10	-	3-3/8	2-3/8	2-1/2	3600	4.60	2,875	18.00	11,350
11	-	3-7/8	2-7/8	2-13/16	3600	7.20	4,530	28.60	18,000
12	-	3-15/16	2-7/8	3-1/2	2800	11.40	7,200	50.00	31,500
13	-	4-1/2	3-3/8	3-15/16	2400	18.00	11,350	75.00	47,268
14	-	5	3-7/8	3-15/16	2200	28.60	18,000	115.00	72,480
16	-	6	-	4-1/2	1500	75.00	47,250	-	-

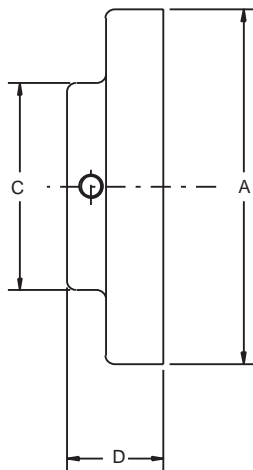


SELECTION/DIMENSIONS

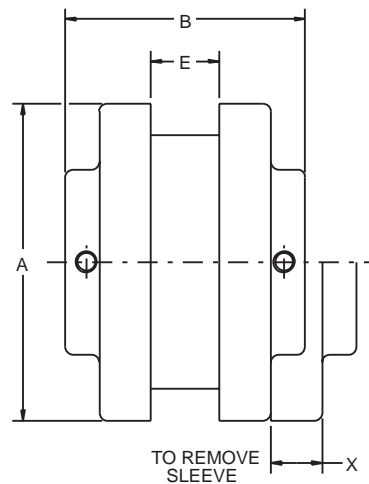


D-FLEX Couplings

TYPE "J" COUPLING DIMENSIONS



TYPE "J" FLANGE



TYPE "J" COUPLING

DIMENSIONS

Coupling Size	Min. Bore	Max. Bore	HP/100	Torque (in.-lbs.)	Max. RPM	A	B	C	D	E	X	Weight (lbs.)
3J	3/8	7/8	0.10	60	9200	2.06	2.00	1.50	0.81	0.38	0.56	0.3
4J	1/2	1	0.19	120	7600	2.46	2.38	1.63	0.88	0.63	0.75	.04
5J	1/2	1-1/8	0.38	240	7600	3.25	2.88	1.88	1.06	0.75	0.97	.09
6J	5/8	1	0.71	4150	6000	4.00	3.31	1.94	1.22	.88	1.09	1.4
6J	1-1/8	1-3/8	0.71	450	6000	4.00	3.31	2.50	1.22	0.88	1.09	1.2

PART NUMBERS

Bore (in.)	Coupling Flange			
	3J	4J	5J	6J
3/8	• 022700			
1/2	• 022701	• 022708	• 022714	
5/8	• 022702	• 022709	• 022715	• 022721
3/4	• 022703	• 022710	• 022716	• 022722
7/8	• 022704	• 022711	• 022717	• 022723
15/16		• 022712	• 022718	• 022724
1		• 022713	• 022719	• 022725
1-1/8			• 022720	• 022726
1-3/16				• 022727
1-1/4				• 022728
1-3/8				• 022729

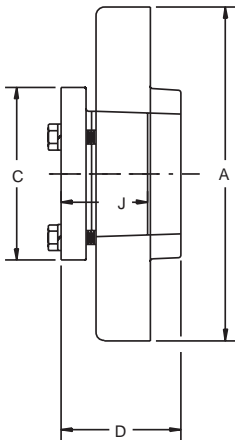
- Stock flange assemblies

Complete coupling consists of (2) J flanges, and (1) sleeve.

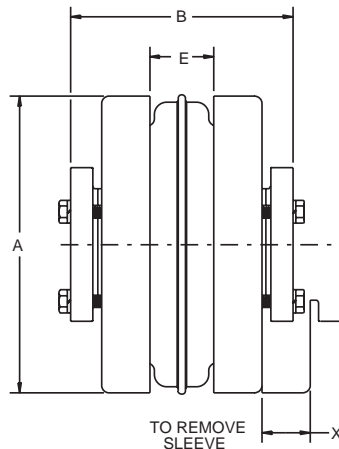


D-FLEX Couplings

TYPE "B" QD BUSHED COUPLING DIMENSIONS



TYPE "B" FLANGE



TYPE "B" COUPLING

DIMENSIONS

Coupling Size	Bushing Type	Min. Bore	Max. Bore#	HP/100*	Torque* (in.-lbs.)	Max. RPM	A	B	C	D	E	J	X	Weight (lbs.)+	
														Flange	Bushing
6B	JA	1/2	1-3/16	0.71	450	6000	4.00	3.31	2.00	1.53	0.88	1.00	1.09	1.30	0.40
7B	JA	1/2	1-3/16	1.20	725	5250	4.63	3.44	2.00	1.59	1.00	1.00	1.31	1.90	0.40
8B	SH	1/2	1-5/8	1.80	1135	4500	5.45	4.06	2.63	1.84	1.13	1.31	1.50	2.90	0.90
9B	SD	1/2	1-15/16	2.80	1800	3750	6.35	4.63	3.19	2.19	1.44	1.81	1.75	4.80	1.60
10B	SK	1/2	2-1/2	4.60	2875	3600	7.50	5.63	3.88	1.84	1.63	1.94	2.00	7.80	2.70
11B	SF	1/2	2-15/16	7.20	4530	3600	8.63	6.56	4.63	2.13	1.88	2.00	2.38	12.00	3.80
12B	E	7/8	3-1/2	11.40	7200	2800	10.00	7.94	6.00	2.69	2.31	2.75	2.69	18.00	9.00
13B	F	1	3-15/16	18.00	11350	2400	11.75	9.31	6.63	3.69	2.69	3.75	3.00	31.20	14.00
14B	F	1	3-15/16	28.60	18000	2200	13.88	10.44	6.63	3.69	3.25	3.75	3.50	51.40	14.00
16B	J	1-1/2	4-1/2	75.00	47250	1500	18.88	13.25	7.25	4.75	4.75	4.63	4.50	120.00	21.00

Max bore with shallow key

* Ratings based on EPDM & Neoprene. For Hytrel ratings, see page PT1-7

+ Approximate weight for each flange; average weight for each bushing

PART NUMBERS

	6B	7B	8B	9B	10B	11B	12B
Part No.	• 022501	• 022502	• 022503	• 022504	• 022505	• 022506	• 022507

• Stock flange assemblies

	13B	14B	16B
Part No.	022508	022509	022510

Complete coupling consists of (2) B flanges, (2) sleeve and (2) QD Bushings. QD Bushings must be ordered separately.

FEATURES/BENEFITS PAGE PT1-2	EASY SELECTION PAGE PT1-5	MODIFICATION/ACCESSORIES PAGE PT1-67	ENGINEERING/TECHNICAL PAGE PT1-69
---------------------------------	------------------------------	---	--------------------------------------

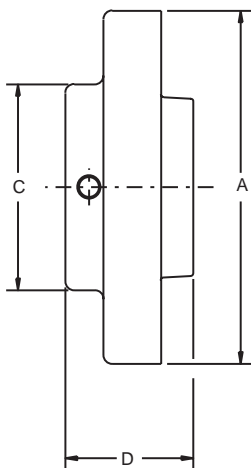


SELECTION/DIMENSIONS

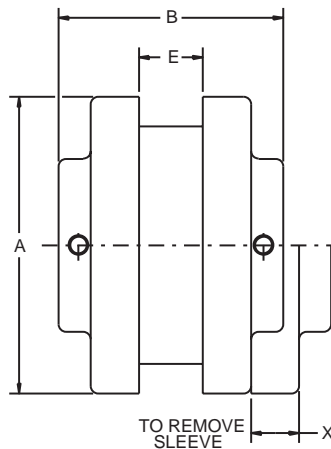


D-FLEX Couplings

TYPE "S" COUPLING DIMENSIONS



TYPE "S" FLANGE



TYPE "S" COUPLING

DIMENSIONS

Coupling Size	Min. Bore	Max. Bore#	HP/100*	Torque* (in.-lbs.)	Max. RPM	A	B	C	D	E	X	Weight (lbs.)
5S	1/2	1-1/4	0.38	240	7600	3.25	2.81	1.88	1.34	0.75	0.97	1.10
6S	1/2	1-1/2						2.50	1.63			1.90
6S	1-9/16	1-3/4	0.71	450	6000	4.00	3.50	2.50	1.31	0.88	1.09	1.80
6S	1-13/16	1-7/8						2.81	1.56			1.80
7S	1/2	1-7/8	1.20	725	5250	4.63	3.94	2.81	1.84	1.00	1.31	2.60
8S	1/2	2-1/8						4.44	2.09			4.40
8S	2-3/16	2-3/8	1.80	1135	4500	5.45	5.00	3.25	1.94	1.13	1.50	3.70
9S	7/8	2-1/2						5.06	2.41			6.50
9S	2-9/16	2-7/8	2.80	1800	3750	6.35	6.00	4.13	2.28	1.44	1.75	6.20
10S	1-1/8	2-7/8						4.38	2.72			10.50
10S	2-15/16	3-3/8	4.60	2875	3600	7.50	7.00	4.75	2.69	1.63	2.00	9.80
11S	1-1/4	2-1/8						7.13	3.44			18.10
11S	2-3/16	2-3/4						7.13	3.44			17.90
11S	2-13/16	3-3/8	7.20	4530	3600	8.63	7.13	5.63	3.44	1.88	2.38	16.60
11S	3-7/16	3-7/8						8.00	3.88			16.40
12S	1-1/2	2-1/8						5.75	4.00			27.80
12S	2-3/16	2-7/8	11.40	7200	2800	10.00	8.25	5.75	4.00	2.31	2.69	27.50
12S	2-15/16	3-15/16										26.60
13S	2" Reb.	4-1/2	18.00	11350	2400	11.75	9.25	6.75	4.38	2.69	3.06	45.20
14S	2" Reb.	5	28.60	18000	2200	13.88	9.88	7.50	4.50	3.25	3.50	69.10
16S	2" Reb.	6	75.00	47250	1500	18.88	14.25	8.00	6.00	4.75	4.25	125.30

Max bore with shallow keyway. For max bore with standard keyway, see page PT1-11

* Ratings based on EPDM & Neoprene. For Hytrel ratings, see page PT1-7



D-FLEX Couplings

TYPE "S" COUPLING FLANGE - PART NUMBERS

Bore (in.)	Coupling Flange Size										
	5S	6S	7S	8S	9S	10S	11S	12S	13S	14S	16S
Reborable	• 004976	004977	004978	004979	004980	004981	004982	004983	004993	004994	004995
Finished Bore Flanges											
1/2	004498										
5/8	• 004500	004511	004534								
3/4	• 004502	• 004513	• 004536	004559							
7/8	• 004504	• 004515	• 004538	• 004561	004586						
15/16	• 004505	004516	004539	004562	004587						
1	• 004506	• 004517	• 004540	• 004563	004588						
1-1/8	• 004508	• 004519	• 004542	• 004565	004590	004619					
1-3/16	* 004509	• 004520	• 004543	• 004566	004591	004620					
1-1/4	† 004510	• 004521	• 004544	• 004567	• 004592	• 004621	004656				
1-5/16		004522	004545	004568	004593	004622	004657				
1-3/8		• 004523	• 004546	• 004569	• 004594	• 004623	• 004658				
1-7/16		* 004524	• 004547	• 004570	• 004595	• 004624	004659				
1-1/2		† 004525	• 004548	• 004571	• 004596	• 004625	004660	004696			
1-5/8		• 004527	* 004550	• 004573	• 004598	• 004627	• 004662	004698			
1-11/16		004528	004551	• 004574	• 004599	• 004628	004663	004699			
1-3/4		• 004529	004552	• 004575	• 004600	• 004629	004664	004700			
1-7/8		• 004531	† 004554	• 004577	• 004602	• 004631	• 004666	• 004702			
1-15/16				• 004578	• 004603	• 004632	004667	004703			
2				* 004579	• 004604	• 004633	004668	004704			
2-1/8				† 004581	• 004606	• 004635	• 004670	• 004706			
2-3/16				004582	004607	• 004636	004671	004707			
2-1/4				004583	004608	004637	004672	004708			
2-3/8				• 004585	* 004610	• 004639	• 004674	• 004710	004996		
2-7/16					004611	• 004640	004675	004711			
2-1/2					† 004612	• 004641	004676	004712			
2-5/8					004614	004643	004678	004714			
2-11/16					004615	004644	004679	004715			
2-3/4					004616	* 004645	004680	004716			
2-7/8					• 004618	† 004647	• 004682	• 004718	004997	004998	
2-15/16						004648	004683	004719			
3						004649	004684	004720			
3-1/8						004651	004686	004722			
3-1/4						004653	004688	004724			
3-5/16						004654	004689	004725			
3-3/8						• 004655	** 004690	• 004726			
3-7/16							004691	004727			
3-1/2							004692	004728			
3-5/8							004693	004730			
3-11/16								004731			
3-3/4							004694	004732			
3-7/8							• 004695	** 004734			
3-15/16								004735			
METRIC											
20mm	• 004860	• 004869									
24mm	• 004862	• 004871									
25mm	• 004863	• 004872	• 004885								
28mm		• 004873	• 004886	• 004901							
30mm		• 004874	• 004887	• 004902	• 004920						
32mm		• 004875	• 004888	• 004903	• 004921						
35mm		• 004876	• 004889	• 004904	• 004922						
38mm			• 004890	• 004905	• 004923						
42mm			• 004892	• 004907	• 004925						
48mm				• 004909	• 004927						

• Stock flange assemblies

† Max bore for reborable flanges.

Complete coupling consists of (2) S flanges and (1) sleeve.

*Max bore with std. square keyway. Larger bores have rectangular keyways & keys supplied.

FEATURES/BENEFITS PAGE PT1-2	EASY SELECTION PAGE PT1-5	MODIFICATION/ACCESSORIES PAGE PT1-67	ENGINEERING/TECHNICAL PAGE PT1-69
---------------------------------	------------------------------	---	--------------------------------------

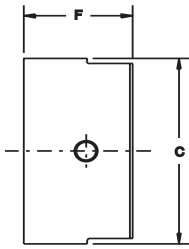


SELECTION/DIMENSIONS

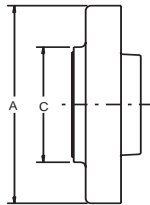


D-FLEX Couplings

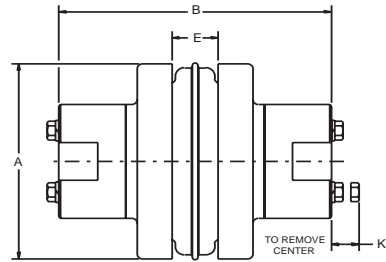
TYPE "SC" COUPLING DIMENSIONS



SHAFT HUB



SPACER FLANGE



COMPLETE SPACER COUPLING

DIMENSIONS (1)

Cplg. Size	BSE	Flange Number	Shaft Hub		Max. Bore (2)		A	(3) B	C	E	F		K	Wt. (4) (lbs.)
			H	HS	H	HS					H	HS		
5SC	3.50	5SC35	5H	-	1-1/8	-	3.25	5.63	2.00	0.75	1.09	-	0.56	4.50
	4.38	6SC44	6H	---	1-3/8	-	4.00	6.75	2.50	0.88	1.22	-	0.75	8.10
	5.00	6SC50	6H	---	1-3/8	-	4.00	7.88	2.50	0.88	1.22	-	0.75	8.70
7SC	3.50	7SC35	7H	---	1-5/8	-	4.63	6.38	2.81	1.00	1.47	-	0.63	9.90
	4.38	7SC44	7H	---	1-5/8	-	4.63	7.25	2.81	1.00	1.47	-	0.63	10.80
	5.00	7SC50	7H	---	1-5/8	-	4.63	7.88	2.81	1.00	1.47	-	0.63	11.40
8SC	3.50	8SC35	8H	-	1-7/8	-	5.45	6.88	3.25	1.13	1.72	-	0.81	15.20
	3.50	8SC35-10	10H	10HS	2-3/8	1-5/8	5.45	9.13	4.38	1.13	2.34	1.66	0.81	23.20
	4.38	8SC44	8H	-	1-7/8	-	5.45	7.75	3.25	1.13	1.72	1.33	0.81	16.40
	5.00	8SC50	8H	-	1-7/8	-	5.45	8.38	3.25	1.13	1.72	1.33	1.19	17.40
	5.00	8SC50-10	10H	10HS	2-3/8	1-5/8	5.45	9.63	4.38	1.13	2.34	1.33	1.19	27.20
9SC	3.50	9SC35	9H	9HS	2-1/8	1-1/2	6.35	7.50	3.63	1.44	1.97	1.53	1.06	18.60
	4.38	9SC44	9H	9HS	2-1/8	1-1/2	6.35	8.25	3.63	1.44	1.97	1.53	1.06	22.20
	5.00	9SC50	9H	9HS	2-1/8	1-1/2	6.35	8.88	3.63	1.44	1.97	1.53	1.06	23.20
	5.00	9SC50-11	11H	11HS	2-7/8	1-7/8	6.35	10.38	5.25	1.44	2.72	1.91	1.19	40.40
	7.00	9SC70-11	11H	11HS	2-7/8	1-7/8	6.35	12.38	5.25	1.44	2.72	1.91	1.19	48.20
	7.75	9SC78-11	11H	11HS	2-7/8	1-7/8	6.35	13.13	5.25	1.44	2.72	1.91	1.19	51.00
10SC	4.75	10SC48	10H	10HS	2-3/8	1-5/8	7.50	9.38	4.38	1.63	2.34	1.66	1.19	37.60
	5.00	10SC50	10H	10HS	2-3/8	1-5/8	7.50	9.63	4.38	1.63	2.34	1.66	1.19	38.40
	7.00	10SC70-13	13H	13HS	3-3/8	2-1/2	7.50	13.63	6.13	1.63	3.34	2.47	1.88	72.00
	7.75	10SC78-13	13H	13HS	3-3/8	2-1/2	7.50	14.63	6.13	1.63	3.34	2.47	1.88	76.00
10.00	10SC100-13	13H	13HS	3-3/8	2-1/2	7.50	16.63	6.13	1.63	3.34	2.47	1.88	88.00	
11SC	4.75	11SC48	11H	11HS	2-7/8	1-7/8	8.63	10.31	5.25	1.88	2.72	1.91	1.19	54.50
	5.00	11SC50	11H	11HS	2-7/8	1-7/8	8.63	10.38	5.25	1.88	2.72	1.91	1.19	54.70
	7.00	11SC70-14	14H	-	3-7/8	-	8.63	14.38	6.50	1.88	3.84	2.00	2.00	86.10
	7.75	11SC78-14	14H	-	3-7/8	-	8.63	15.38	6.50	1.88	3.84	2.00	2.00	90.30
	10.00	11SC100-14	14H	-	3-7/8	-	8.63	17.63	6.50	1.88	3.84	2.00	2.00	102.70
12SC	7.00	12SC70	12H	12HS	2-7/8	2-1/2	10.00	12.88	5.75	2.31	2.97	2.53	1.50	88.10
	7.00	12SC70-14	14H	-	3-7/8	-	10.00	14.63	6.50	2.31	3.84	2.00	2.00	99.10
	7.75	12SC78	12H	12HS	2-7/8	2-1/2	10.00	13.63	5.75	2.31	2.97	2.53	1.50	91.90
	7.75	12SC78-14	14H	-	3-7/8	-	10.00	14.38	6.50	2.31	3.84	2.00	2.00	103.30
	10.00	12SC100-14	14H	-	3-7/8	-	10.00	17.63	6.50	2.31	3.84	2.00	2.00	115.70
13SC	7.75	13SC78	13H	13HS	3-3/8	2-1/2	11.75	14.38	6.13	2.69	3.34	2.47	1.88	129.60
14SC	7.75	14SC78	14H	-	3-7/8	-	13.88	15.38	6.50	3.25	3.84	-	2.00	179.90

(1) Ratings (HP/100, Torque, RPM) same as Type S. See page PT1-10.

(2) Check shaft hub table on next page for minimum Bore.

(3) B dimension included H hubs. Dimension will change if one or two HS (short hubs) are used.

(4) Complete coupling weight at MAX bore.



SELECTION/DIMENSIONS



D-FLEX Couplings

TYPE "SC" SPACER COUPLINGS - SPACER FLANGE PART NUMBERS

BSE (in.)	Coupling Size						
	5SC	6SC	7SC	8SC	8SC-10	9SC	9SC-11
3.50	• 022000	• 022001	• 022004	• 022007	• 022775	• 022010	
4.38		• 022002	• 022005	• 022008		• 022011	
5.00		• 022003	• 022006	• 022009	• 022776	• 022012	• 022777
7.00							• 022778
7.75							• 022779

BSE (in.)	Coupling Size							
	10SC	10SC-13	11SC	11SC-14	12SC	12SC-14	13SC	14SC
4.75	• 022013		• 022015					
5.00	• 022014		• 022016					
7.00		022780		022783	• 022017	022786		
7.75		022781		022784	• 022018	022787	021997	021998
10.00		022782		022785		022788		

* Stock flanges

SPACER SHAFT HUB PART NUMBERS

Bore (in.)	Coupling Size									
	5H	6H	7H	8H	9H	10H	11H	12H	13H	14H
Reborable Finished Bore Hubs	• 022220	• 022221	• 022222	• 022223	• 022224	• 022225	• 022226	• 022227		
1/2	022329									
5/8	• 022331	022340	022353							
1 1/16	022332	022341	022354							
3/4	• 022333	• 022342	022355	022368						
7/8	• 022335	• 022344	• 022357	022370	022387					
15/16	022336	022345	022358	022371	022388					
1	• 022337	• 022346	• 022359	• 022372	022389					
1-1/8	• 022339	• 022348	• 022361	• 022374	022391	022409	0022452			
1-1/8 (1)					• 022392(1)	• 022410(1)	022453(1)			
1-3/16		022349	022362	022375	022393	022411	022454			
1-1/4		• 022350	022363	022376	022394	022412	022455			
1-5/16		022351	022364	022377	022395	022413	022456			
1-3/8		022352	• 022365	• 022378	• 022396	022414	022457			
1-7/16				022379	022397	022415	022458			
1-1/2			• 022366	• 022380	• 022398	022416	022459			
1-9/16				022381	022399	022417	022460			
1-5/8			• 022367	• 022382	• 022400	• 022418	022461			
1-5/8 (1)							022462(1)			
1-3/4				• 022384	• 022402	022420	022464			
1-7/8				• 022386	• 022404	• 022428	• 022466	022483		
1-15/16					022405	022429	022467	022484		
2					022406	022430	022468	022485		
2-1/8					• 022408	• 022432	• 022470	022487	022813(1)	
2-3/16						022433	022471	022488		
2-1/4						022434	022472	022489		
2-5/16						022435	022473	022490		
2-3/8						• 022436	• 022474	022491	022810	• 022815
2-3/8(1)								022492(1)	022814(1)	
2-7/16								022493		
2-1/2							022476	022494		
2-5/8							022478	022496		
2-11/16							022479	022497		
2-3/4							022480	022498		
2-7/8							022482	022500	022811	022816
3-3/8									022812	022817
3-7/8										022818

• Stock hub assemblies

(1) HS (Short Hub)

Complete coupling consists of (2) shaft hubs, (2) spacer flanges, and (1) sleeve

FEATURES/BENEFITS PAGE PT1-2	EASY SELECTION PAGE PT1-5	MODIFICATION/ACCESSORIES PAGE PT1-67	ENGINEERING/TECHNICAL PAGE PT1-69
---------------------------------	------------------------------	---	--------------------------------------