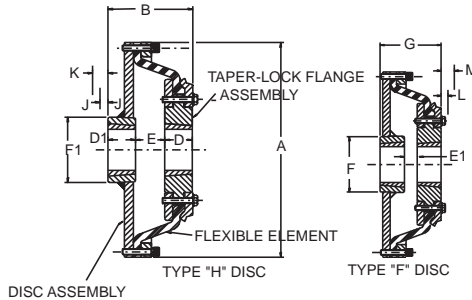




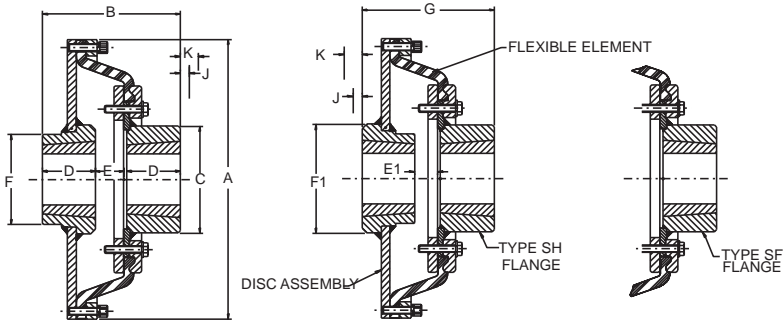
# SELECTION/DIMENSIONS



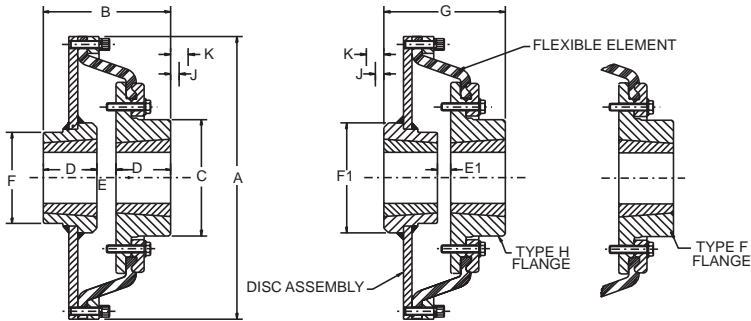
## High Speed, TAPER-LOCK



PH87 THRU PH131



PH172 thru PH252 STEEL FLANGE ASSEMBLY



PH172 & PH192 IRON FLANGE ASSEMBLY

<p>FEATURES/BENEFITS PAGE PT1-2</p>	<p>EASY SELECTION PAGE PT1-17</p>	<p>MODIFICATION/ACCESSORIES PAGE PT1-67</p>	<p>ENGINEERING/TECHNICAL PAGE PT1-69</p>
---	---------------------------------------	---	--



## High Speed, TAPER-LOCK

Coupling Size	Bushing Size	Min. Bore	Max. Bore	HP/100	Torque (In-Lbs)	Max. RPM		Weight (Lbs)		Inertia (Lb-Ft <sup>2</sup> )	
						Gray Iron Flange	Steel Flange	Iron Flg	Steel Flg	Iron Flg	Steel Flg
PH87	+	1/2	+	3.0	1890	6000	.....	19.5	.....	1.32	.....
PH96	*	1/2	*	4.5	2835	5230	.....	27.2	.....	2.44	.....
PH116	2517	1/2	2-11/16	7.1	4470	4050	.....	40.8	.....	4.92	.....
PH131	2517	1/2	2-11/16	9.5	5985	3750	.....	59.7	.....	8.87	.....
PH172	3535	1-3/16	3-15/16	23.0	14490	1860	2800	138.2	128.5	31.74	29.98
PH192	4040	1-7/16	4-7/16	47.0	29610	1620	2430	219.6	219.6	51.09	50.37
PH213	4545	1-15/16	4-15/16	90.0	56700	.....	2130	.....	291.2	102.3	90.22
PH252	5050	2-7/16	5-5/16	135.0	85050	.....	1945	.....	389.9	144.1	133.7

Coupling Size	A	B		C		D	D <sub>1</sub>	E	
		Iron Flg	Steel Flg	Iron Flg	Steel Flg			Iron Flg	Steel Flg
PH87	9.44	3.53	.....	.....	.....	1.00	1.75	0.81	.....
PH96	10.31	4.30	.....	.....	.....	1.25	1.75	1.33	.....
PH116	12.31	4.44	.....	.....	.....	1.75	1.75	1.14	.....
PH131	13.81	5.45	.....	.....	.....	1.75	1.75	1.95	.....
PH172	18.31	8.06	8.97	7.50	7.00	3.50	.....	1.06	1.88
PH192	20.31	9.31	10.25	8.63	8.50	4.00	.....	1.31	2.25
PH213	22.50	.....	11.31	.....	8.75	4.50	.....	.....	2.31
PH252	26.50	.....	14.31	.....	9.50	5.00	.....	.....	4.31

Coupling Size	E <sub>1</sub>		F	F <sub>1</sub>	G		J*	K†	L*	M†
	Iron Flg	Steel Flg			Iron Flg	Steel Flg				
PH87	0.50	.....	4.12	4.19	3.28	.....	1.00	1.63	0.81	1.06
PH96	0.45	.....	4.12	4.19	3.42	.....	1.00	1.63	0.94	1.38
PH116	0.33	.....	4.12	4.19	3.63	.....	1.00	1.63	1.00	1.63
PH131	0.77	.....	4.12	4.19	4.27	.....	1.00	1.63	1.00	1.63
PH172	0.63	1.44	6.25	7.12	7.62	8.53	1.31	2.69	.....	.....
PH192	0.38	1.31	7.75	8.62	8.38	9.31	1.63	3.38	.....	.....
PH213	.....	1.44	8.75	9.75	.....	10.44	1.94	4.06	.....	.....
PH252	.....	2.94	9.50	10.88	.....	12.94	2.31	4.81	.....	.....

★ Space required to tighten bushing with shortened hex key or to loosen screws to permit removal of the hub by a puller  
 † Space required to loosen bushing with the shortened hex key using screws as hack screws - no puller required.

### PH87 - PH252 PART NUMBERS

Coupling Size	TAPER-LOCK Flange (1) Req'd						Disc Assy (1) Req'd	HS Element (1) Req'd	Bushing Size
	Std Flange	Flange Size	Iron Flange		Steel Flange				
			Type H	Type F	Type SH	Type SF			
PH87	010603	PX70	.....	.....	.....	.....	011307	011227	+
PH96	010604	PX80	.....	.....	.....	.....	011308	011228	*
PH116	010606	PX100	.....	.....	.....	.....	011310	011230	2517
PH131	010607	PX110	.....	.....	.....	.....	011311	011231	2517
PH172	.....	PX140	011134	011154	010290	010294	011314	011234	3535
PH192	.....	PX160	011137	011157	010291	010295	011316	011236	4040
PH213	.....	PX190	.....	.....	010292	010296	011319	011239	4545
PH252	.....	PX220	.....	.....	010293	010297	011322	011242	5050

+ Flange assembly uses a 1610 bushing with 1-11/16 max. bore  
 Disc assembly uses a 2517 bushing with 2-11/16 max. bore  
 \* Flange assembly uses a 2012 bushing with 2-1/8 max. bore  
 Disc assembly uses a 2517 bushing with 2-11/16 max. bore

Complete coupling consists of: (1) TAPER-LOCK Flange Assembly, (1) TAPER-LOCK Disc Assembly, & (1) High speed Element. TAPER-LOCK bushings must be ordered separately.

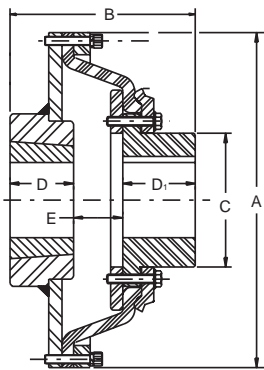
FEATURES/BENEFITS PAGE PT1-2	EASY SELECTION PAGE PT1-17	MODIFICATION/ACCESSORIES PAGE PT1-67	ENGINEERING/TECHNICAL PAGE PT1-69
---------------------------------	-------------------------------	---	--------------------------------------



# SELECTION/DIMENSIONS

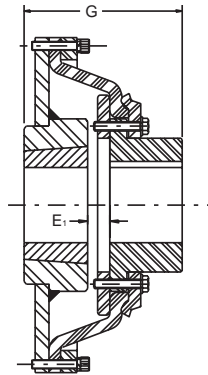


## High Speed, Bored to Size

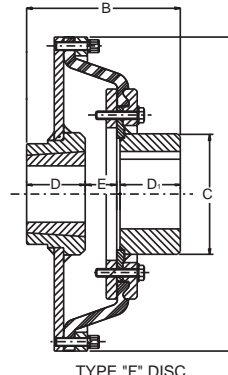


TYPE "H" DISC

SIZE PH87 - 131

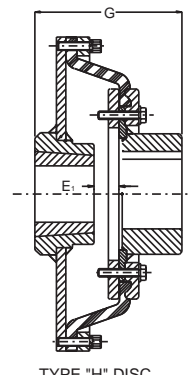


TYPE "F" DISC



TYPE "F" DISC

SIZE PH172 - 252



TYPE "H" DISC

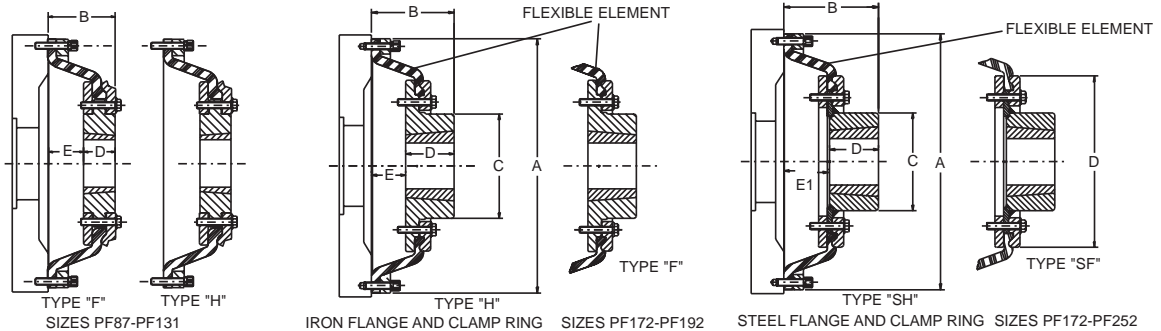
Coupling Size	BS Flange Assembly		TAPER-LOCK Disc Assembly		A	B	C	D	D <sub>1</sub>	E	E <sub>1</sub>	G	Weight (Lbs)	Inertia (Lb-Ft <sup>2</sup> )
	Min Bore	Max Bore	Min Bore	Max Bore										
PH87B	none	2-1/8	1/2	2-11/16	9.44	4.59	2.94	1.75	1.75	1.09	0.81	4.31	20.1	1.33
PH96B	none	2-9/16	1/2	2-11/16	10.31	5.44	3.69	1.75	2.00	1.69	0.81	4.56	28.0	2.47
PH116B	none	3-1/4	1/2	2-11/16	12.31	6.13	4.94	1.75	2.63	1.75	0.97	5.31	42.8	5.31
PH131B	none	3-15/16	1/2	2-11/16	13.81	7.25	5.44	1.75	3.00	2.50	1.31	6.06	60.1	9.08
PH172B	2-1/4	4-1/2	1-3/16	3-15/16	18.31	9.06	7.00	3.50	3.88	1.88	1.44	8.63	135.2	30.98
PH192B	2-1/2	6	1-7/16	4-7/16	20.31	11.19	8.50	4.00	5.13	2.25	1.31	10.25	220.6	54.27
PH213B	2-1/2	6-1/4	1-15/16	4-15/16	22.50	11.31	8.75	4.50	4.69	2.31	1.44	10.44	289.2	91.62
PH252B	2-7/8	6-7/8	2-7/16	5-5/16	26.50	14.31	9.50	5.00	5.19	4.31	2.94	12.94	379.9	135.9

Coupling Size	BS Flange Assy (1) Req'd	TAPER-LOCK Disc Assy (1) Req'd	TAPER-LOCK Bushing Size	HS Element (1) Req'd
PH87B	010301	011307	2517	011227
PH96B	010302	011308	2517	011228
PH116B	010304	011310	2517	011230
PH131B	010305	011311	2517	011231
PH172B	010530	011314	3535	011234
PH192B	010531	011316	4040	011236
PH213B	010508	011319	4545	011239
PH252B	010509	011322	5050	011242

Complete coupling consists of: (1) BS Flange Assembly, (1) TAPER-LOCK Disc Assembly, (1) High Speed Element, and (1). TAPER-LOCK Bushing. TAPER-LOCK bushings must be ordered separately.



## Flywheel, TAPER-LOCK



Coupling Size	Bushing Size	Min. Bore	Max. Bore	HP/100	Torque (In-Lbs)	Max. RPM		A	B	
						Gray Iron Flange	Steel Flange		Iron Flg.	Steel Flg.
PF87	1610	1/2	1-11/16	3.00	1890	6000	6000	9.44	2.69	.....
PF96	2012	1/2	2-1/8	4.50	2835	5230	5230	10.31	2.83	.....
PF116	2517	1/2	2-11/16	7.10	4470	4050	4050	12.31	3.14	.....
PF131	2517	1/2	2-11/16	9.50	5985	3750	3750	13.81	3.70	.....
PF172	3535	1-3/16	3-15/16	23.00	14490	1860	2800	18.31	5.81	6.72
PF192	4040	1-7/16	4-7/16	47.00	29610	1620	2430	20.31	6.56	7.50
PF213	4545	1-15/16	4-15/16	90.00	56700	.....	2130	22.50	.....	9.00
PF252	5050	2-7/16	5-5/16	135.00	85050	.....	1945	26.50	.....	10.81

Coupling Size	Bushing Size	C		D	E	E <sub>1</sub>	Weight (Lbs) Less Bushing		Inertia (Lb-Ft <sup>2</sup> )	
		Iron Flg.	Steel Flg.				Iron Flgs	Steel Flgs	Iron Flgs	Steel Flgs
PF87	1610	.....	.....	1.00	1.34	.....	9.9	.....	0.6	.....
PF96	2012	.....	.....	1.25	1.58	.....	13.5	.....	1.05	.....
PF116	2517	.....	.....	1.75	1.39	.....	22.3	.....	2.35	.....
PF131	2517	.....	.....	1.75	1.95	.....	33.3	.....	4.35	.....
PF172	3535	7.50	7.00	3.50	2.31	3.12	87.2	77.5	17.49	15.73
PF192	4040	8.63	8.50	4.00	2.56	3.50	128.6	128.6	28.84	28.12
PF213	4545	.....	8.75	4.50	-	4.50	221.2	190.2	74.47	64.36
PF252	5050	.....	9.50	5.00	-	5.81	297.9	260.9	121.79	111.38

### PF87 THRU PF252 PART NUMBERS

Coupling Size	TAPER-LOCK Flange (1) Req'd					Bolt Ring Assy (1) Req'd	High Speed Element (1) Req'd	T-L Bushing Size
	Std Flange	Iron Flange		Steel Flange				
		Type H	Type F	Type SH	Type SF			
PF87	010603	.....	.....	.....	.....	011247	011227	1610
PF96	010604	.....	.....	.....	.....	011248	011228	2012
PF116	010606	.....	.....	.....	.....	011250	011230	2517
PF131	010607	.....	.....	.....	.....	011251	011231	2517
PF172	.....	011134	011154	010290	010294	011254	011234	3535
PF192	.....	011137	011157	010291	010295	011256	011236	4040
PF213	.....	.....	.....	010292	010296	011259	011239	4545
PF252	.....	.....	.....	010293	010297	011262	011242	5050

Complete coupling consists of: (1) TAPER-LOCK Flange Assembly (as selected), (1) Bolt Ring Assembly, (1) High Speed Element, and (1) TAPER-LOCK Bushing. TAPER-LOCK Bushings must be ordered separately. See page PT1-40 for Flywheel & Power Take Off housing information.

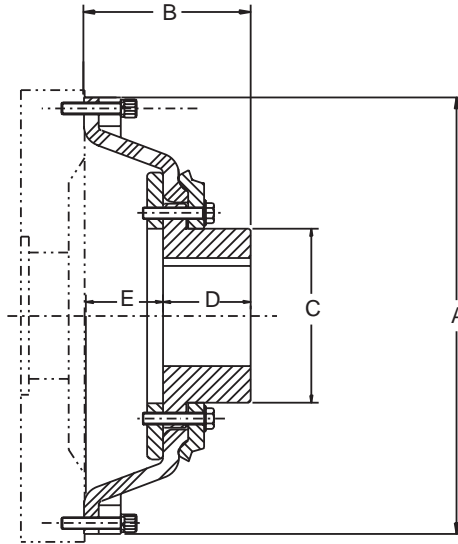
FEATURES/BENEFITS PAGE PT1-2	EASY SELECTION PAGE PT1-17	MODIFICATION/ACCESSORIES PAGE PT1-67	ENGINEERING/TECHNICAL PAGE PT1-69
---------------------------------	-------------------------------	---	--------------------------------------



# SELECTION/DIMENSIONS



## Flywheel, Bored To Size



### PF87B THRU PF252B BORED-TO-SIZE FLYWHEEL COUPLINGS

Coupling Size	Min. Bore	Max. Bore	HP/100	Torque (In-Lbs)	Max. RPM Steel Flg	A	B	C	D	E	Weight (Lbs)	Inertia (Lb-Ft <sup>2</sup> )
PF87B	none	2-1/8	3.0	1890	6000	9.44	3.38	2.94	1.75	1.63	10.5	0.61
PF96B	none	2-9/16	4.5	2835	5230	10.31	3.94	3.69	2.00	1.94	14.3	1.08
PF116B	none	3-1/4	7.1	4470	4050	12.31	4.68	4.94	2.63	2.00	24.3	2.47
PF131B	none	3-15/16	9.5	5980	3750	13.81	5.50	5.44	3.00	2.50	33.7	4.56
PF172B	2-1/4	4-1/2	23.0	14490	2800	18.31	6.81	7.00	3.88	3.13	84.2	16.73
PF192B	2-1/2	6	47.0	29610	2430	20.31	8.44	8.50	5.13	3.50	129.6	32.02
PF213B	2-1/2	6-1/4	90.0	56700	2130	22.50	9.00	8.75	4.69	4.50	188.2	65.76
PF252B	2-7/8	6-7/8	135.0	85050	1945	26.50	10.81	9.50	5.19	5.81	250.9	113.58

### PF87 - PF252B PART NUMBERS

Coupling Size	BS Flange Assy (1) Req'd	Bolt Ring Assy (1) Req'd	High Speed Element (1) Req'd
PF87B	010301	011247	011227
PF96B	010302	011248	011228
PF116B	010304	011250	011230
PF131B	010305	011251	011231
PF172B	010530	011254	011234
PF192B	010531	011256	011236
PF213B	010508	011259	011239
PF252B	010509	011262	011242

Complete coupling consists of: (1) BS Flange Assembly, (1) Bolt Ring Assembly, and (1) High Speed Element.

### SAE POWER TAKE OFF & FLYWHEEL INFO.

Coupling Size	Fits Within These SAE Power Take-Off Housings	SAE Flywheel		
		Bolt Circle Diam.	Tapped Holes	
			No.	Size
PF87	6,5	8-3/4	8	5/16-18
PF96	4,3	9-5/8	6	3/8-16
PF116	4,3,2,1	11-5/8	8	3/8-16
PF131	3,2,1,0	13-1/8	8	3/8-16
PF172	0	17-1/4	8	1/2-13
PF192	0	19-1/4	8	1/2-13
PF213	0	21-3/8	6	5/8-11
PF252	0	25-1/4	12	5/8-11